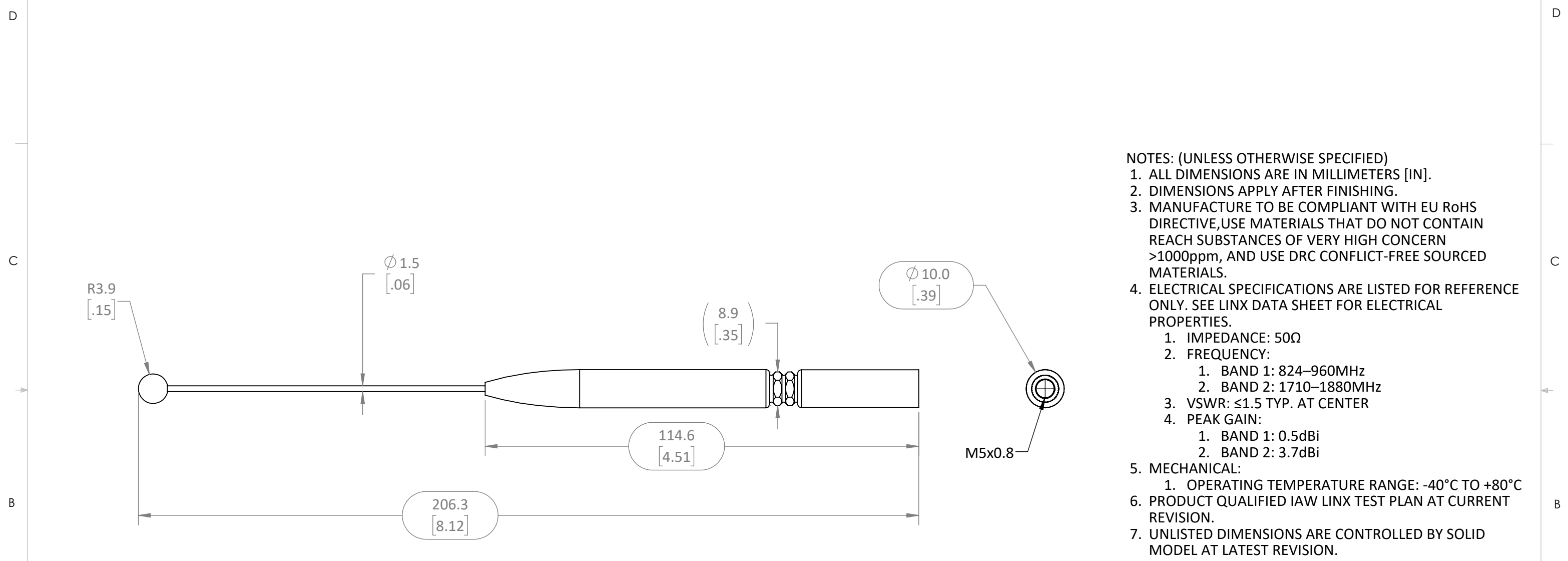


REVISIONS			
REV	DESCRIPTION	DATE	APPV
A	PRODUCTION RELEASE	AJVM 10/5/2022	



- NOTES: (UNLESS OTHERWISE SPECIFIED)
1. ALL DIMENSIONS ARE IN MILLIMETERS [IN].
 2. DIMENSIONS APPLY AFTER FINISHING.
 3. MANUFACTURE TO BE COMPLIANT WITH EU RoHS DIRECTIVE, USE MATERIALS THAT DO NOT CONTAIN REACH SUBSTANCES OF VERY HIGH CONCERN >1000ppm, AND USE DRC CONFLICT-FREE SOURCED MATERIALS.
 4. ELECTRICAL SPECIFICATIONS ARE LISTED FOR REFERENCE ONLY. SEE LINX DATA SHEET FOR ELECTRICAL PROPERTIES.
 1. IMPEDANCE: 50Ω
 2. FREQUENCY:
 1. BAND 1: 824–960MHz
 2. BAND 2: 1710–1880MHz
 3. VSWR: ≤1.5 TYP. AT CENTER
 4. PEAK GAIN:
 1. BAND 1: 0.5dBi
 2. BAND 2: 3.7dBi
 5. MECHANICAL:
 1. OPERATING TEMPERATURE RANGE: -40°C TO +80°C
 6. PRODUCT QUALIFIED IAW LINX TEST PLAN AT CURRENT REVISION.
 7. UNLISTED DIMENSIONS ARE CONTROLLED BY SOLID MODEL AT LATEST REVISION.

WARNING: THIS DRAWING CONTAINS PROPRIETARY INFORMATION THAT IS THE SOLE PROPERTY OF LINX TECHNOLOGIES, AND SHALL BE TREATED AS SUCH. NO DISCLOSURE OR REPRODUCTION OF THIS DOCUMENT IS PERMITTED, IN WHOLE OR IN PART, WITHOUT THE EXPRESS WRITTEN PERMISSION OF LINX TECHNOLOGIES OR ITS DESIGNATED AGENTS.

STE connectivity 159 ORT LANE
MERLIN, OR 97532

TITLE: **HIGH GAIN WHIP ELEMENT FOR MAG. 1 BASES**

MATERIAL: BRASS	INTERPRET DIMENSIONS AND TOLERANCES PER ASME Y14.5.	PROJECTION: 	SIZE	DWG. NO.	REV
ABS	.X ±2.0 .XX ±1.00 .XXX ±.500		ANGLES: ±1° SURFACE:	B	C-ANT-ELE-S01-006
WEIGHT:	DRAWN: JHAGER	DT:	SCALE: 1:1	DO NOT SCALE DRAWING	SHEET 1 OF 1
FINISH: BLACK WP	ENGR:	DT: 10-JUL-08	LDCDFB_B		