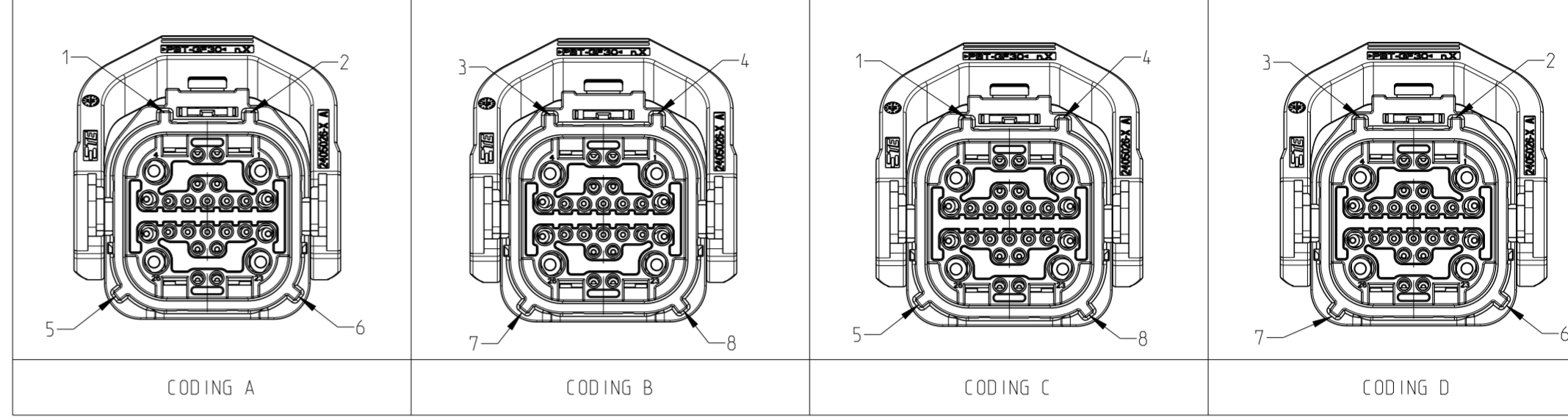
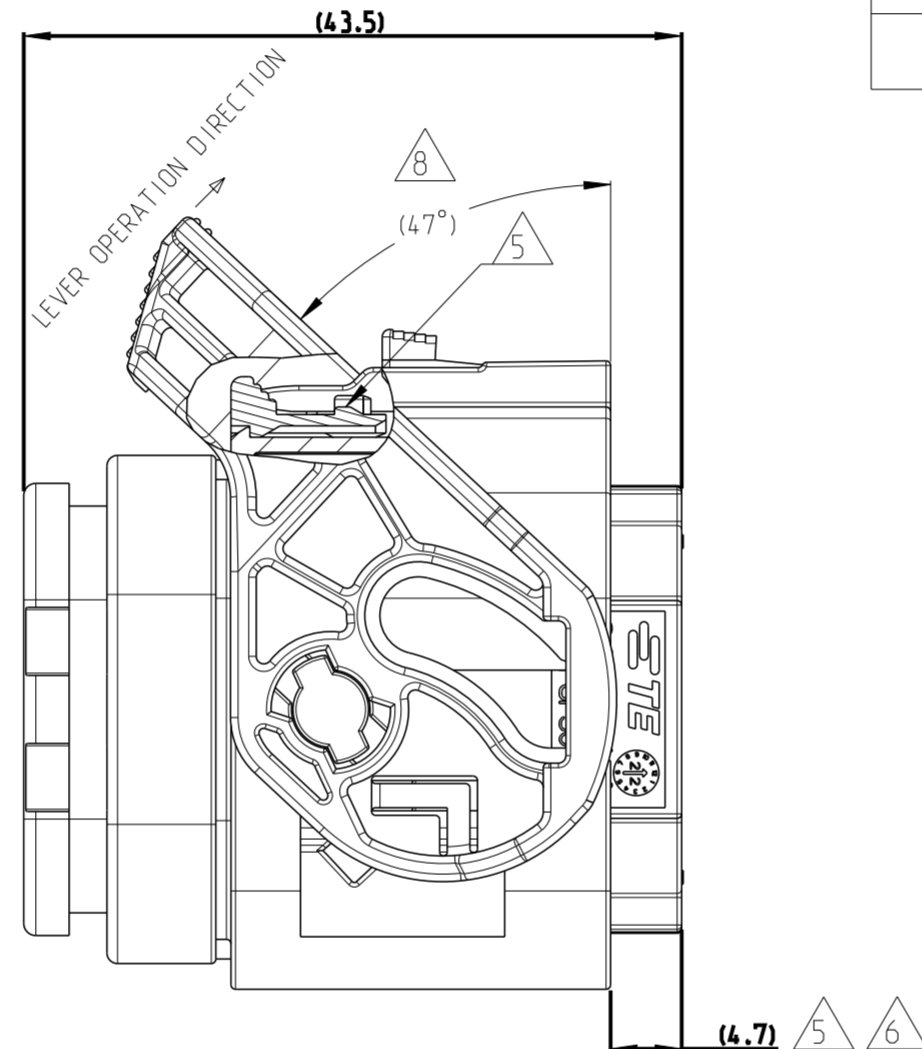
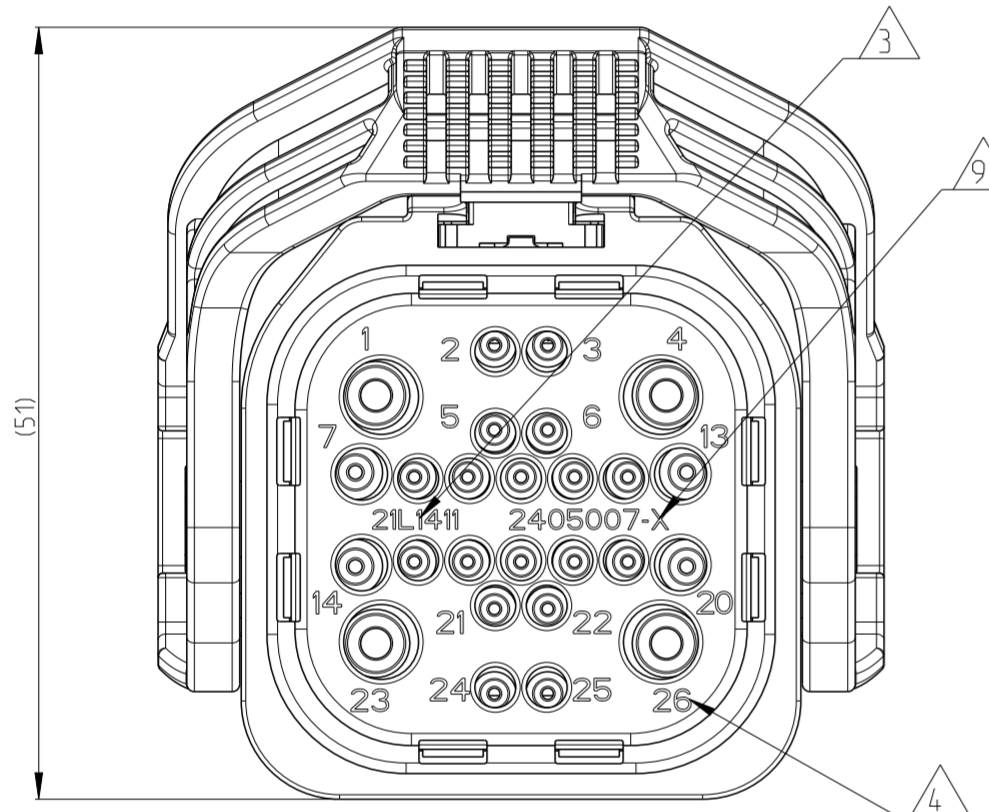
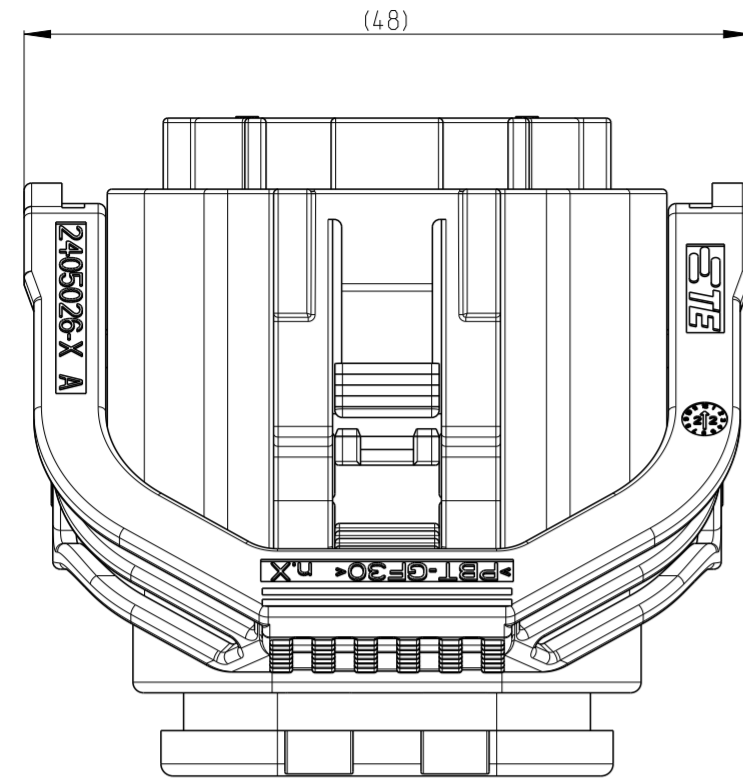


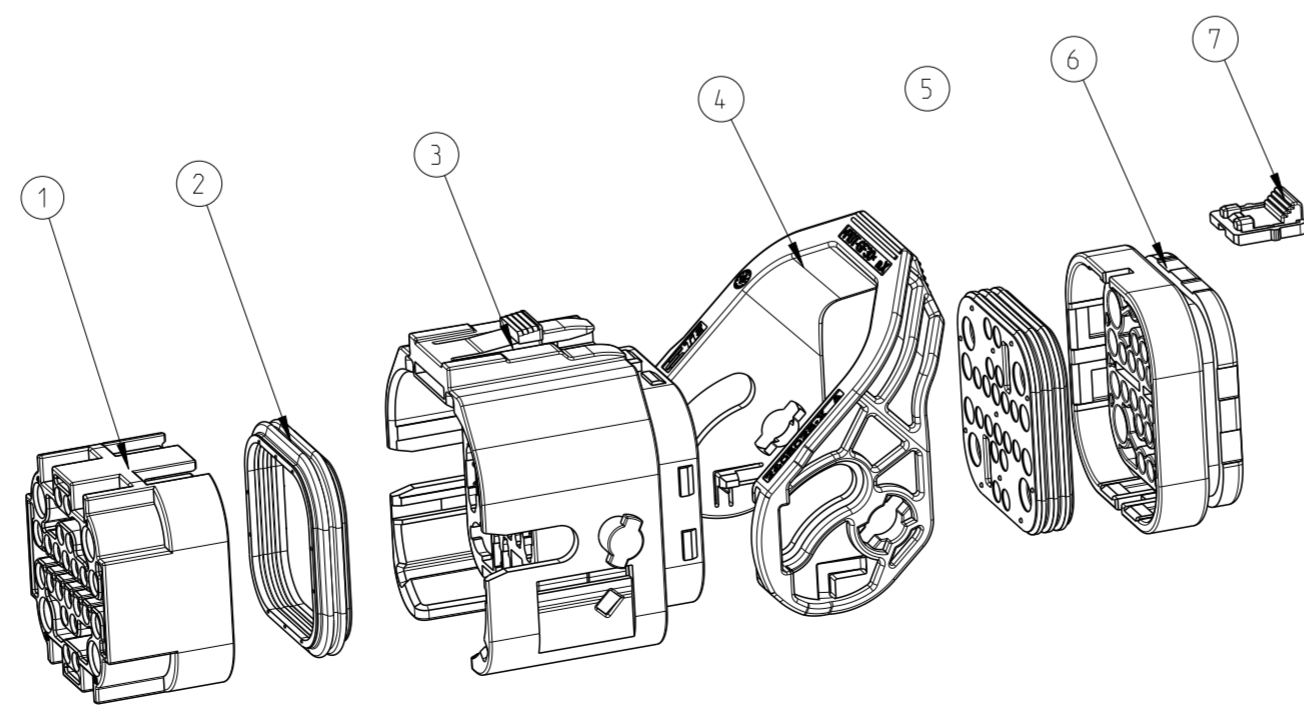
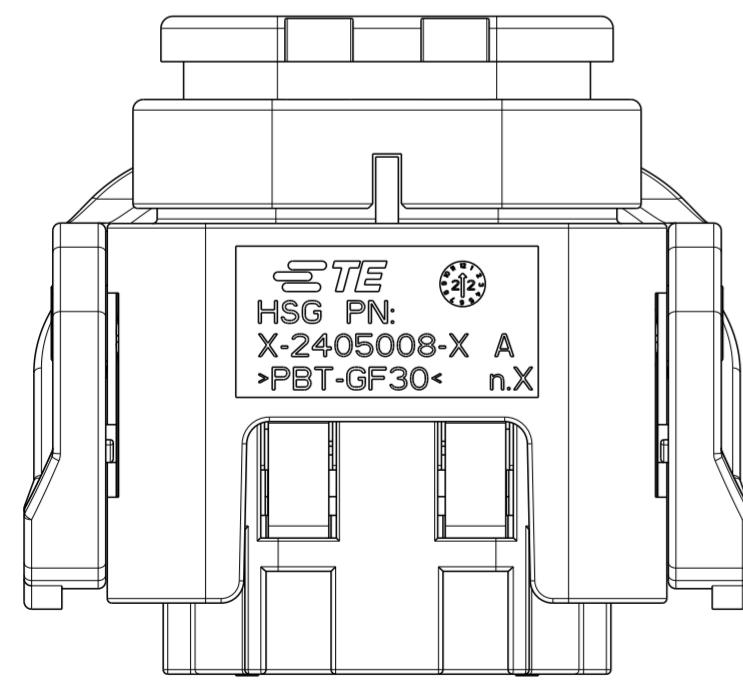
P	LTR	DESCRIPTION	DATE	DWN	APVD
A		INITIAL RELEASE	24MAR2022	L.G	Z.Z
A1		ECN-22-165271	19JUL2022	L.G	Z.Z



- NOTE:
- THIS PLUG MATES WITH TAB HOUSING ASSEMBLY PN 2405028-X, OR 1-2405028-X (X=1, 2, 3, 4 FOR VARIOUS CODE).
  - MATERIAL SEE TABLE
  - DATE CODE: IDENTIFIES THE YEAR, MONTH, DAY AND HOUR OF ASSEMBLY.  
YEAR: FIRST AND SECOND DIGITS(21=2021)  
MONTH: THIRD DIGIT ; EXCLUDING 1 ; A=JAN, B=FEB, C=MARCH...(M=DECEMBER)  
DAY: FOURTH AND FIFTH DIGITS(14=14th DAY)  
HOUR: SIXTH AND SEVENTH DIGITS(11=11AM)
  - IDENTIFICATION FOR CABLE PINOUT.
  - TPA AND CPA SEATED ON PRE-LOCK POSITION FOR DELIVERY.
  - PULL TPA TO PRE-LOCK BEFORE TERMINAL INSERTION IN CASE OF TPA BEING HIT TO END-LOCK POSITION.
  - REFER TO 114-151006 FOR DT SIZE 12 TERMINAL APPLICATION SPECIFICATION.  
REFER TO 114-151001 FOR DT SIZE 16 TERMINAL APPLICATION SPECIFICATION.  
REFER TO 114-151003 FOR DT SIZE 20 TERMINAL APPLICATION SPECIFICATION.  
APPLICABLE TERMINAL PART NUMBERS AND WIRE SIZE:

TERMINAL PN	WIRE SIZE (MM2)	INSULATION WIRE (MM2)	PINOUT NUMBER
12#	4.0-6.0	Ø3.4-Ø4.3	1,4,23,26
16#	0.75-2.5	Ø1.7-Ø3.0	7,13,14,20
20#	0.5-1.5	Ø1.4-Ø2.4	OTHER PINS

- LEVER SEATED ON PRE-LOCK POSITION FOR DELIVERY.
- LASER PRODUCT PN. SUCH AS "--1" MEANS 2405007-1.



QTY.	REQUEST	PER ASSY	COLOR	MATERIAL	DESCRIPTION	ITEM NO
1	1	1	RED	PBT-GF15	CPA	7
1	-	-	BLUE	PBT-GF30	REAR CAP	6
-	1	-	GREEN			
-	-	1	GREY			
-	-	-	BLACK			
1	1	1	RUST RED	VMQ	GROMMET	5
1	1	1	YELLOW	PBT-GF30	LEVER	4
1	-	-	BLUE	PBT-GF30	HOUSING CODING D	3
-	1	-	GREEN		HOUSING CODING C	
-	-	1	GREY		HOUSING CODING B	
-	-	-	BLACK		HOUSING CODING A	
1	1	1	RUST RED	VMQ	RADIAL SEAL	2
1	1	1	YELLOW	PBT-GF30	TPA	1
REVISION OF EACH ASSY PN						
A	A	A	A	TE ASSEMBLY PN		
--4	--3	--2	--1			

THIS DRAWING IS A CONTROLLED DOCUMENT.

DWN L.GAO 24MAR2022  
CHK C.WAN 23MAR2022  
APVD Z.ZHOU 24MAR2022

TE Connectivity

NTS 26P PLUG ASSEMBLY

SIZE A2 CAGE CODE 00779 DRAWING NO. C-2405007

SCALE 1:1 SHEET 1 OF 1 REV A1

RESTRICTED TO