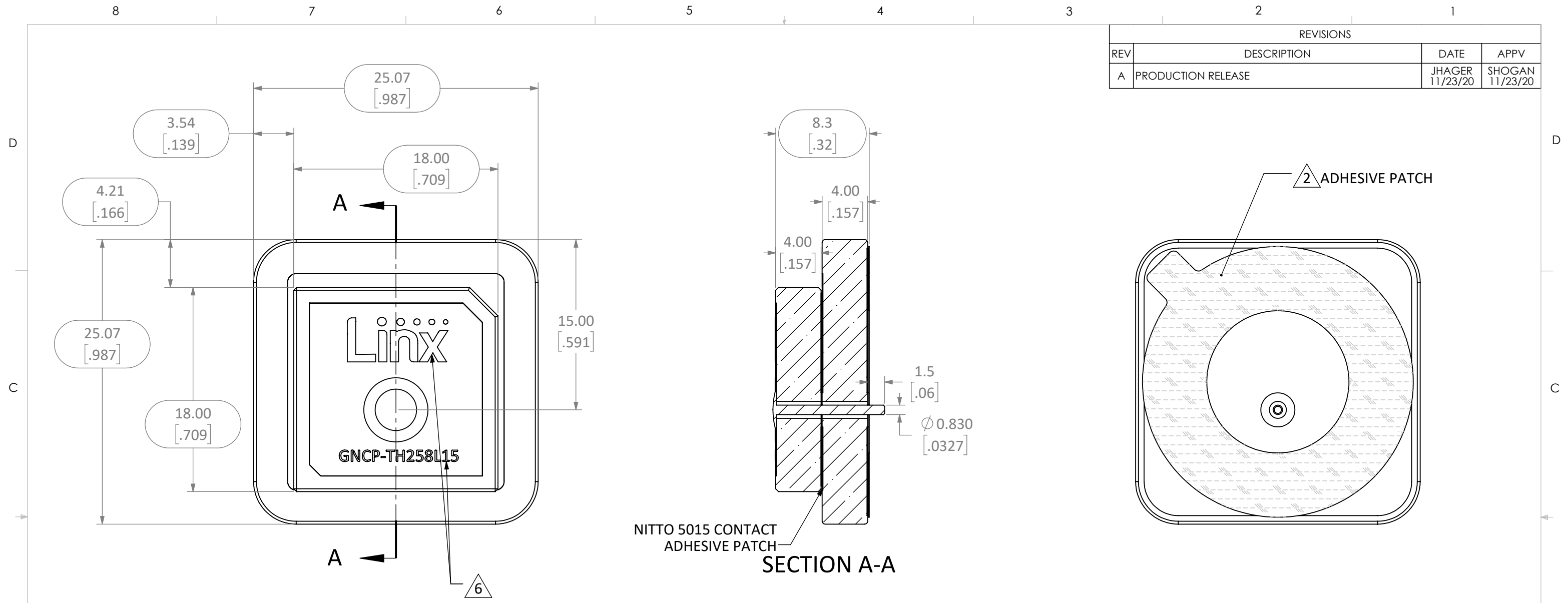


REVISIONS			
REV	DESCRIPTION	DATE	APPV
A	PRODUCTION RELEASE	JHAGER 11/23/20	SHOGAN 11/23/20



NOTES: (UNLESS OTHERWISE SPECIFIED)

1. ALL DIMENSIONS ARE IN MILLIMETERS [IN].
2. DIMENSIONS APPLY AFTER FINISHING.
3. MANUFACTURE TO BE COMPLIANT WITH EU RoHS DIRECTIVE, USE MATERIALS THAT DO NOT CONTAIN REACH SUBSTANCES OF VERY HIGH CONCERN >1000ppm, AND USE DRC CONFLICT-FREE SOURCED MATERIALS.
4. ENVIRONMENTAL:
 1. OPERATING TEMP AFTER ADHERENCE: -40°C - 105°C (STORAGE UP TO 105°C) RH:0%-95%
5. SELF STICK ADHESIVE: NITTO 5015. APPLY BETWEEN 15°C - 40°C.
6. ELECTRICAL THROUGHPUT FOR REFERENCE ONLY. SEE LINX DATA SHEET FOR CURRENT PROPERTIES.
 1. FRQ L1: 1.58GHz
 2. FRQ L5: 1.18 GHz
 3. IMPEDANCE: 50Ω
 4. VSWR: 1.8 MAX
7. SILKSCREEN MODUAL AS SHOWN USING BLACK PERMANANT INK. GEOMETRY CONTROLLED BY .ai FILE AT LATEST REVISION.

WARNING: THIS DRAWING CONTAINS PROPRIETARY INFORMATION THAT IS THE SOLE PROPERTY OF LINX TECHNOLOGIES, AND SHALL BE TREATED AS SUCH. NO DISCLOSURE OR REPRODUCTION OF THIS DOCUMENT IS PERMITTED, IN WHOLE OR IN PART, WITHOUT THE EXPRESS WRITTEN PERMISSION OF LINX TECHNOLOGIES OR ITS DESIGNATED AGENTS.

STE 159 ORT LANE
MERLIN, OR 97532
connectivity

MATERIAL: CERAMIC		INTERPRET DIMENSIONS AND TOLERANCES PER ASME Y14.5.		PROJECTION: 	
WEIGHT:		.X ±2.0 .XX ±1.00 .XXX ±.500		ANGLES: ±1° SURFACE:	
FINISH:		DRAWN: JHAGER DT: 11/24/20		ENGR: DASARATHAN DT: 10-JUL-08	
TITLE: ANT GNSS L1/L5 25x25 STKD PTCH		SIZE DWG. NO. B C-ANT-GNCP-TH258L15		REV A	
SCALE: 3:1		DO NOT SCALE DRAWING		SHEET 1 OF 1	