


REVISIONS			
REV	DESCRIPTION	DATE	APPV
A	PRODUCTION RELEASE	SHOGAN 2/6/12	
B	UPDATED AND REPOSITIONED LOGO	SHOGAN 6/26/12	
C	UPDATED TO ADD TAPE AND REEL SHEET2	CLEWIS 7/23/18	
D	RE-MODELED BATTERY HOLDER. UPDATED TAPE AND REEL TO REMOVE SHEET 2.	JHAGER 8/12/2021	
E	UPDATED 7.6 DIMENSION WAS 8.6, AND UPDATED 2.2 DIMENSION WAS 1.9 TO INCREASE BATTERY RETENTION.	AJVM 12/7/2022	

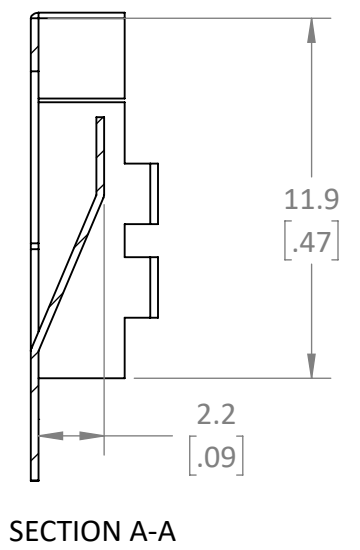
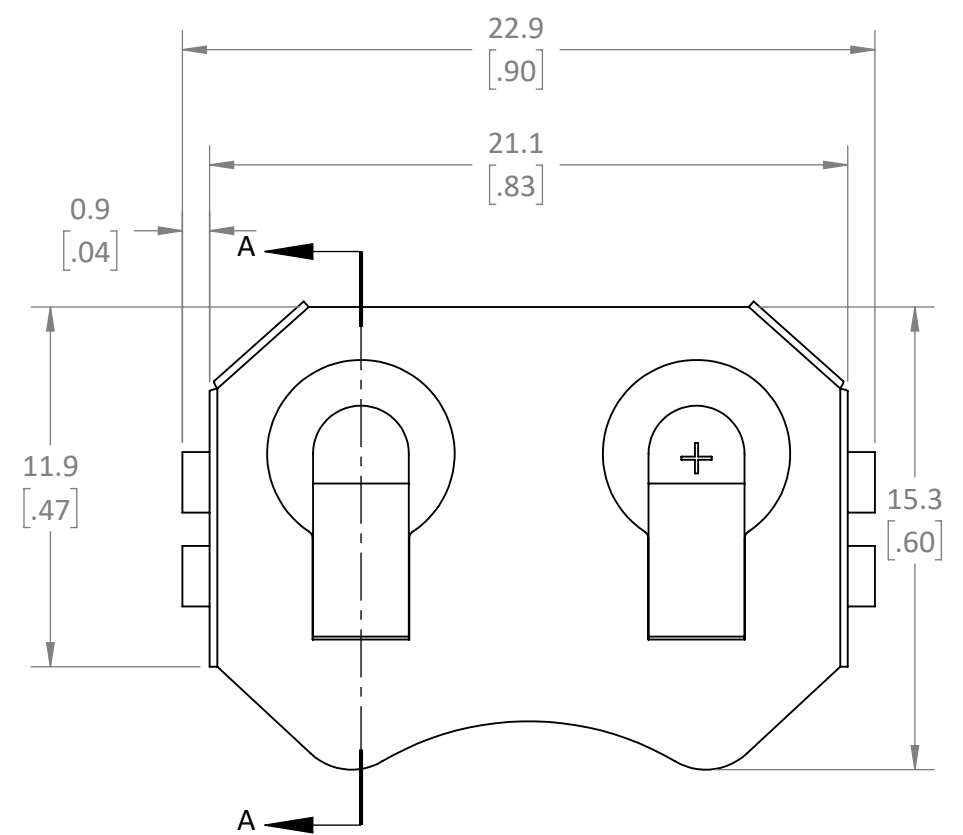
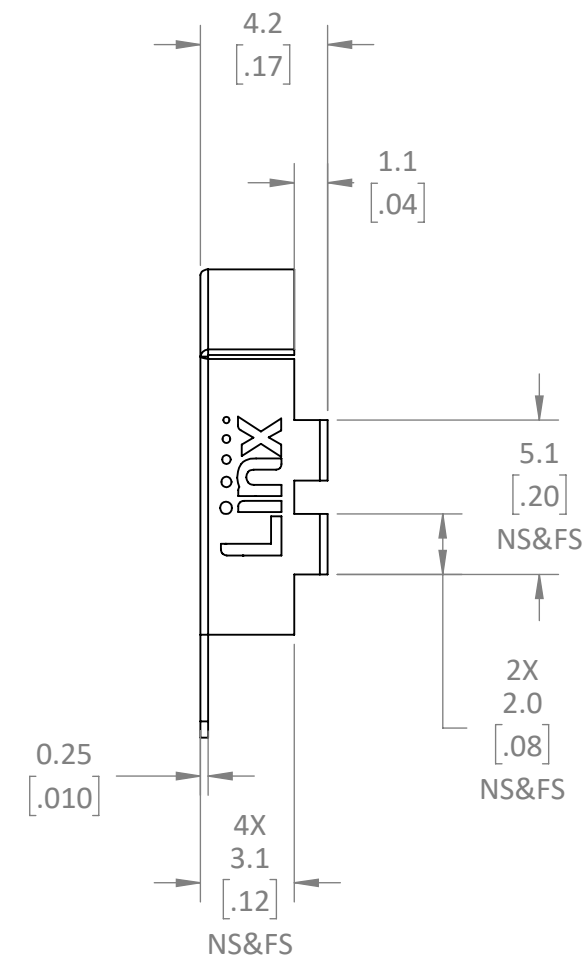
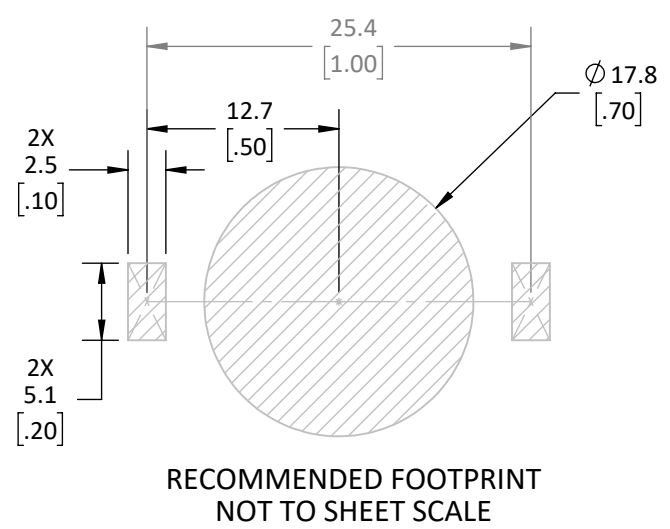
- ALL DIMENSIONS ARE IN MILLIMETERS [IN].
- DIMENSIONS APPLY AFTER FINISHING.
- MANUFACTURE TO BE COMPLIANT WITH EU RoHS DIRECTIVE, USE MATERIALS THAT DO NOT CONTAIN REACH SUBSTANCES OF VERY HIGH CONCERN >1000ppm, AND USE DRC CONFLICT-FREE SOURCED MATERIALS.
- USE MINIMUM BEND RADIUS FOR MATERIAL TYPE AND TEMPER. NO CRAZING ACCEPTABLE ON BENT PARTS.
- PACKAGE PER ORDER AND LABEL BAG, BOX, AND REEL IAW LABEL DRAWING PROVIDED.
- △ TAPE AND REEL IAW ASTM EIA-481-B.
  - PITCH: 20mm
  - TAPE SIZE: 32mm
  - EMBOSSED CARRIER
- FINISH TO BE BRIGHT NICKEL, FREE OF CONTAMINATES AND UNDAMAGED BY REFLOW TEMPERATURES.
- UNLISTED GEOMETRY CONTROLLED BY MODEL AT LATEST REVISION.

PART NUMBER	ARTWORK	PACKAGING
BAT-HLD-001		BULK
BAT-HLD-001-NO	NO ARTWORK	BULK
BAT-HLD-001-TR		△ 6


**159 ORT LANE  
MERLIN, OR 97532**

TITLE:  
**BATTERY HOLDER CR2032  
SURFACE MOUNT**

<b>WARNING:</b> THIS DRAWING CONTAINS PROPRIETARY INFORMATION THAT IS THE SOLE PROPERTY OF LINX TECHNOLOGIES, AND SHALL BE TREATED AS SUCH. NO DISCLOSURE OR REPRODUCTION OF THIS DOCUMENT IS PERMITTED, IN WHOLE OR IN PART, WITHOUT THE EXPRESS WRITTEN PERMISSION OF LINX TECHNOLOGIES OR ITS DESIGNATED AGENTS.			
MATERIAL: PHOSPHOR BRONZE #C-5191 T=.25mm	INTERPRET DIMENSIONS AND TOLERANCES PER ASME Y14.5. .X ±2.0      ANGLES: ±1° .XX ±1.0     SURFACE: √ .XXX ±.500		PROJECTION: 
WEIGHT:	DRAWN: B.MURPHY	DT: 25-MAY-12	SIZE DWG. NO. REV <b>B</b> C-BAT-HLD-001-xx <b>E</b>
FINISH: NICKEL PLATE	ENGR: S.HOGAN	DT: 25-MAY-12	
SCALE: 4:1		DO NOT SCALE DRAWING	SHEET 1 OF 1



8 7 6 5 4 3 2 1

8 7 6 5 4 3 2 1 LDCDFB\_B