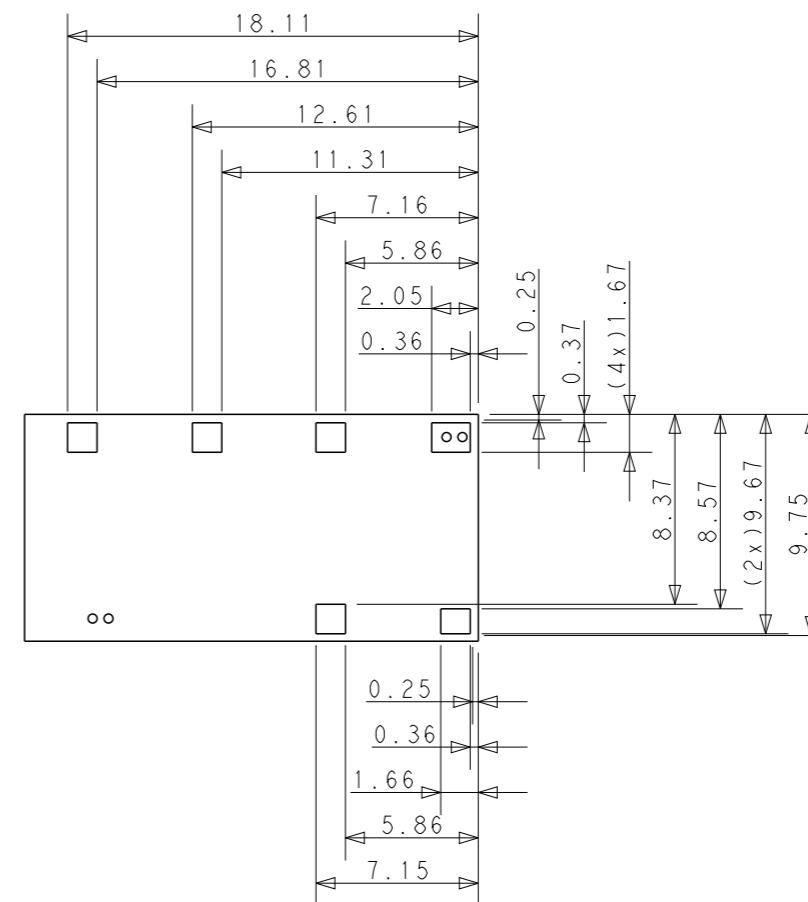
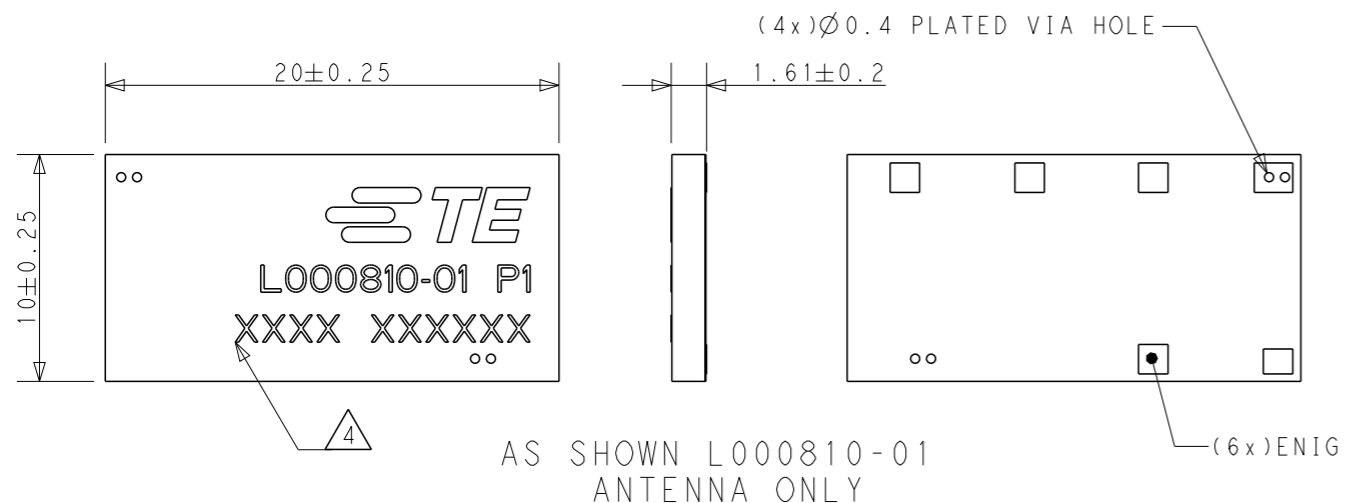


P	LTR	DESCRIPTION	DATE	DWN	APVD
	1	DRAWN	10AUG2023	DW	JH
	2	REVISED PER ECN-23-232613	25SEP2023	DW	JH



[FOR REFERENCE]
RECOMMENDED BACK SIDE LAYOUT

NOTES: UNLESS OTHERWISE SPECIFIED.

1. FABRICATE TO MEET IPC - 6012, CLASS 2.
INSPECT TO MEET IPC - A - 600, CLASS 2.

2. MATERIAL: FR-4 PCB , THK 1.61

3. FINISH:
A: PLATING : 1 OZ COPPER (FOR THROUGH HOLE)
B: SOLDERMASK OVER BASE COPPER (SMOBSG)
C: SOLDERMASK COLOR : ORANGE
D: (ENIG) ELECTROLESS NICKEL IMMERSION GOLD
FINISH 0.03um MIN. GOLD OVER 3um MIN NICKEL.

4 SILKSCREEN; WHITE EPOXY INK
A. TE LOGO, TE P/N
B. WORD REV., FOLLOWED BY THE LATEST REVISION LETTER, AS SHOWN.
C. 4 DIGIT DATE CODE: FIRST 2 DIGITS FOR THE
WEEK CODE AND THE 2ND TWO DIGITS FOR THE YEAR CODE.
OTHERS: SPECIFIC TE SOURCE CODE NUMBER DIGITS AS REQUIRED

5. CONSULT TE CONNECTIVITY DATA SHEET : L000810.

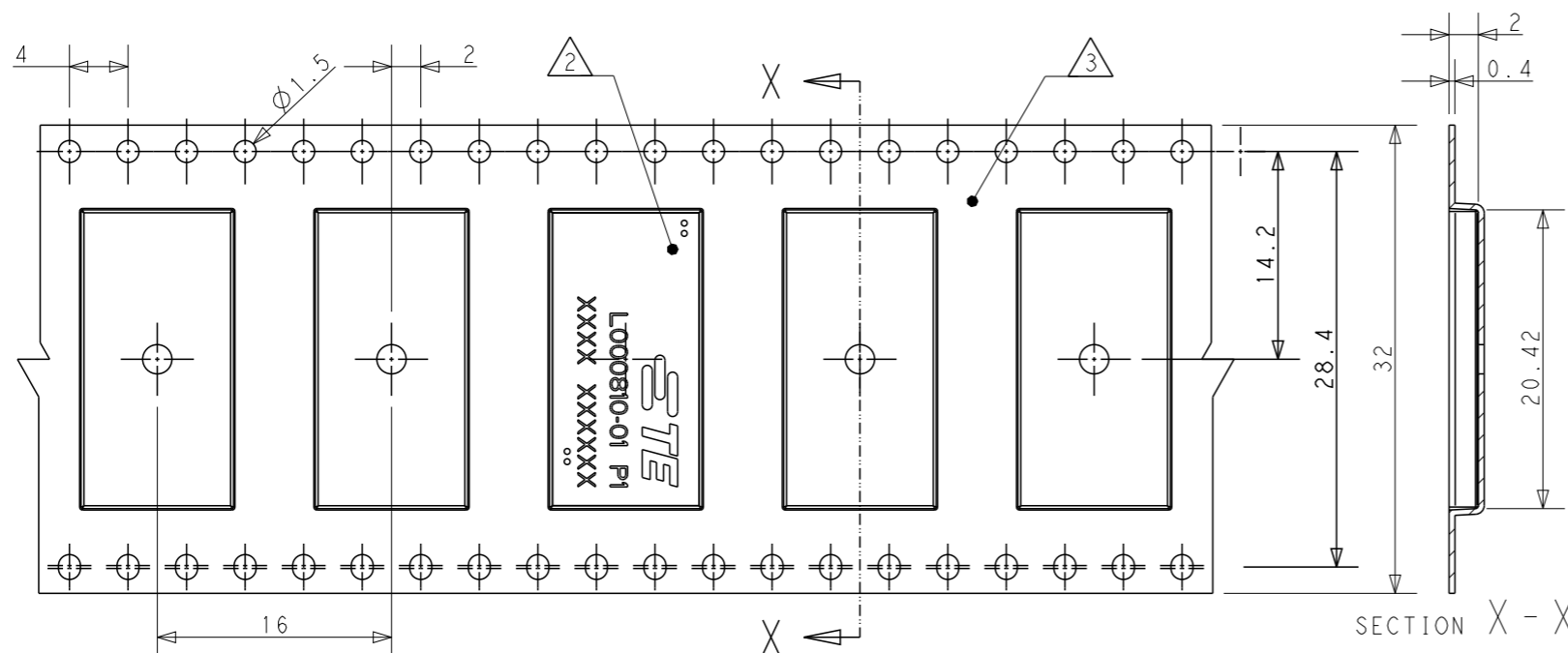
6. CONTACT TE CONNECTIVITY ENGINEERING
PRIOR TO DESIGNING INTO AN APPLICATION.

7. PACKAGING: TAPE AND REEL PACKAGED, SEE SHEET 2.

TAPE AND REELED	L000810-01
PACKAGING	PART NUMBER

THIS DRAWING IS A CONTROLLED DOCUMENT.		DWN DW.PARK	10AUG2023	TE Connectivity													
DIMENSIONS: mm		CHK SJ.NOH	10AUG2023														
TOLERANCES UNLESS OTHERWISE SPECIFIED:		APVD JH.KIM	10AUG2023	NAME PCB ANT, SMD, SCSP B-2b, 2496-5000MHZ													
<table border="0"> <tr> <td>0 PLC</td> <td>±-</td> </tr> <tr> <td>1 PLC</td> <td>±-</td> </tr> <tr> <td>2 PLC</td> <td>±-</td> </tr> <tr> <td>3 PLC</td> <td>±-</td> </tr> <tr> <td>4 PLC</td> <td>±-</td> </tr> <tr> <td>ANGLES</td> <td>±-</td> </tr> </table>		0 PLC	±-	1 PLC	±-	2 PLC	±-	3 PLC	±-	4 PLC	±-	ANGLES	±-	PRODUCT SPEC 108-61420	APPLICATION SPEC -		RESTRICTED TO -
0 PLC	±-																
1 PLC	±-																
2 PLC	±-																
3 PLC	±-																
4 PLC	±-																
ANGLES	±-																
MATERIAL SEE NOTE 2		WEIGHT -	SIZE A3	CAGE CODE 00779	DRAWING NO L000810												
-		CUSTOMER DRAWING		SCALE 3:1	SHEET 1 OF 3												
-		-		REV 2													

P	LTR	DESCRIPTION	DATE	DWN	APVD
		SEE SHEET 1			



NOTES.

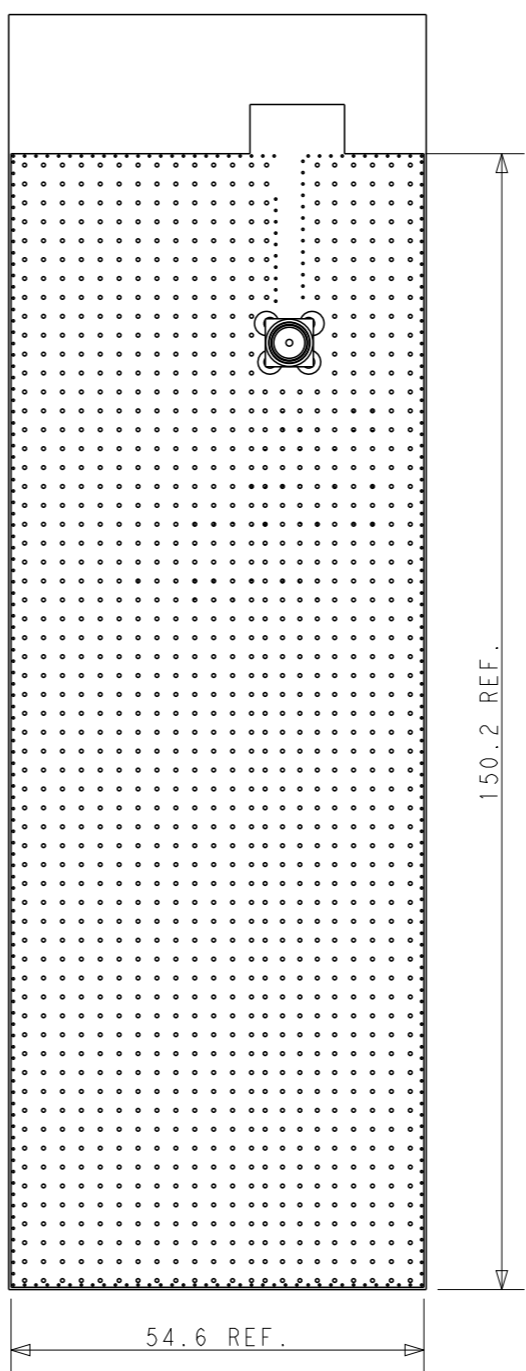
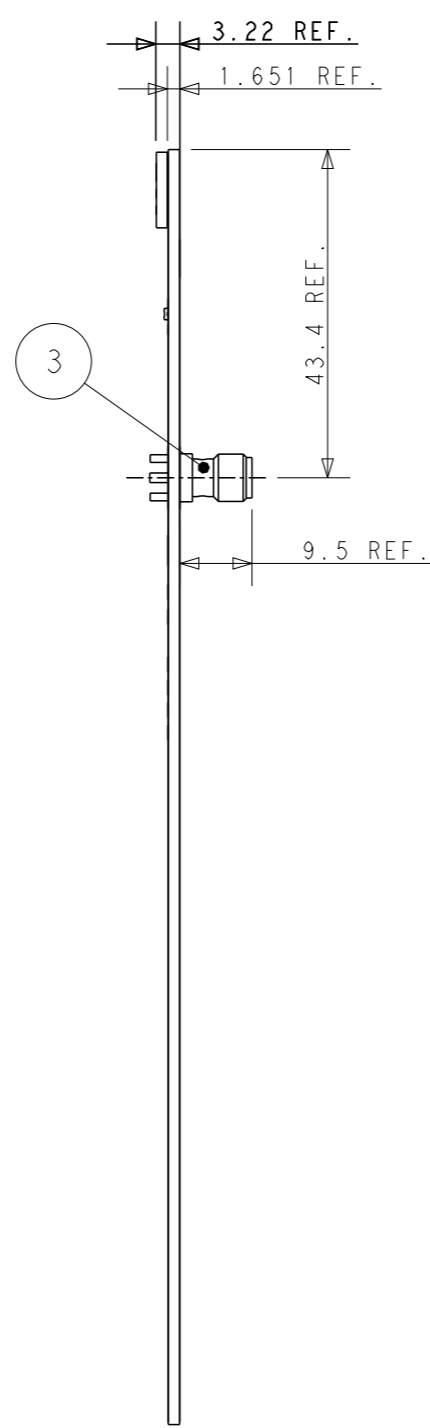
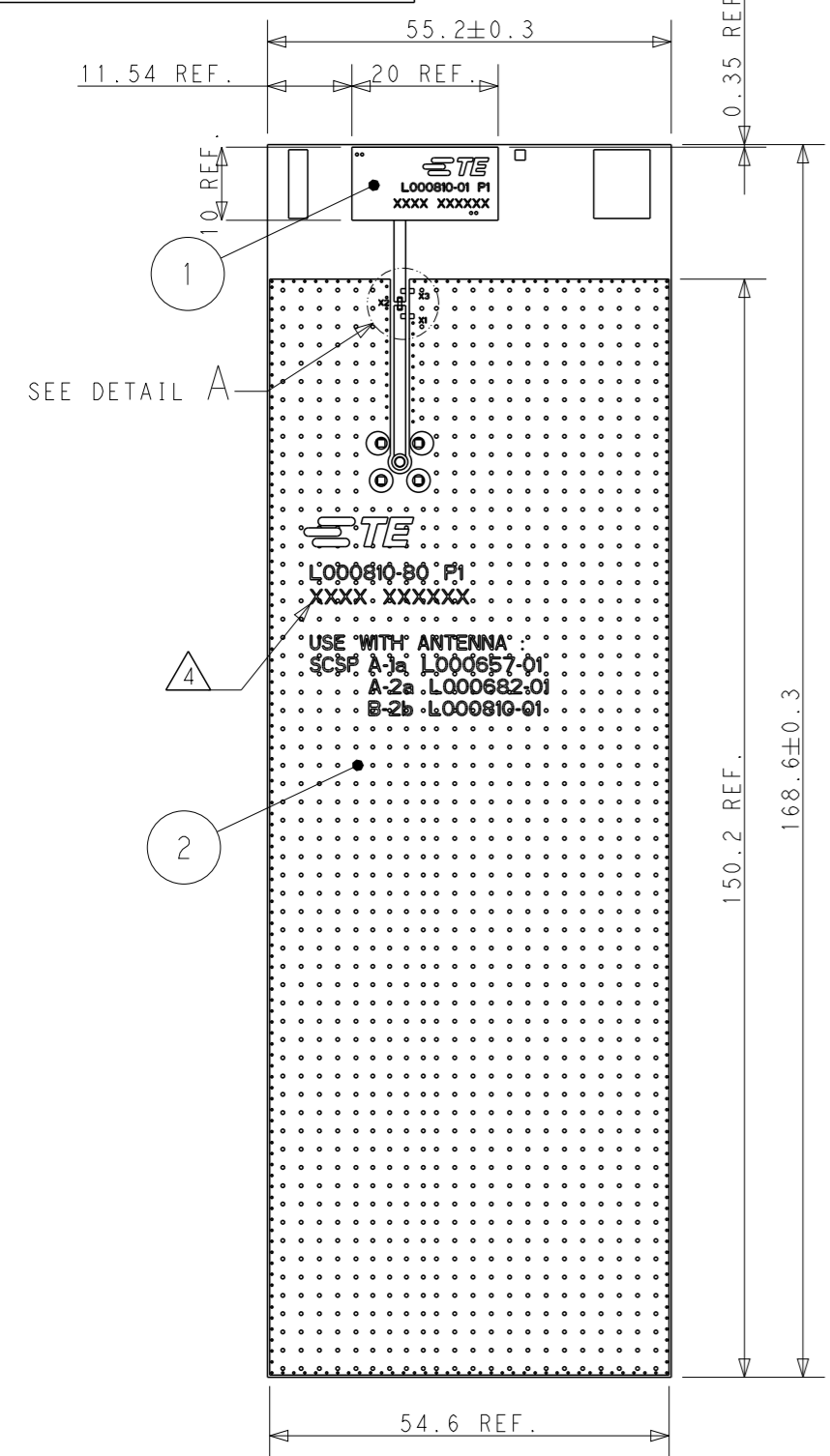
- UNLESS OTHERWISE SPECIFIED TOLERANCE PER EIA-481-D
- ORIENT PARTS AS SHOWN.
- MATERIAL : P.S 0.4mm THICKNESS, COLOR : BLACK, CONDUCTIVE
WHEN ALTERNATIVE MATERIAL (PET, P.P) USE, CONSULT ECO PRIOR TO MANUFACTURER.

USER DIRECTION
OF UNREELING

AS SHOWN L000810-01
ANTENNA WITH REEL PACKAGING
REFERENCE ONLY

THIS DRAWING IS A CONTROLLED DOCUMENT.		DWN DW.PARK	10AUG2023	TE Connectivity NAME PCB ANT, SMD, SCSP B-2b, 2496-5000MHZ -							
DIMENSIONS: mm		CHK SJ.NOH	10AUG2023								
		APVD JH.KIM	10AUG2023								
TOLERANCES UNLESS OTHERWISE SPECIFIED:		PRODUCT SPEC	-								
0 PLC ±- 1 PLC ±- 2 PLC ±- 3 PLC ±- 4 PLC ±- ANGLES ±-		APPLICATION SPEC	-	SIZE	CAGE CODE	DRAWING NO	RESTRICTED TO				
MATERIAL SEE NOTE 3		FINISH	-	WEIGHT	-	A300779	©-L000810	-			
-		-		CUSTOMER DRAWING		SCALE	3:1	SHEET	2 OF 3	REV	2

P	LTR	DESCRIPTION	DATE	DWN	APVD
		SEE SHEET 1			



AS SHOWN L000810-80
ANTENNA WITH EVB ASS'Y

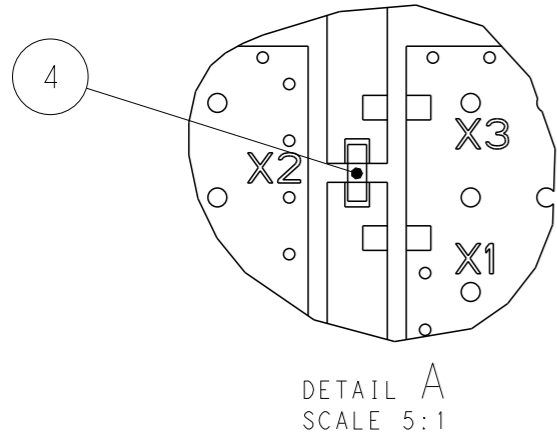
NOTES: UNLESS OTHERWISE SPECIFIED.

- FABRICATE TO MEET IPC - 6012, CLASS 2. INSPECT TO MEET IPC - A - 600, CLASS 2.
- MATERIAL: SEE TABLE
- FINISH: EVB ASSEMBLY WITH SOLDER PROCESS

4 SILKSCREEN; WHITE EPOXY INK
 A. TE LOGO, TE P/N
 B. WORD REV., FOLLOWED BY THE LATEST REVISION LETTER, AS SHOWN.
 C. 4 DIGIT DATE CODE: FIRST 2 DIGITS FOR THE WEEK CODE AND THE 2ND TWO DIGITS FOR THE YEAR CODE.
 OTHERS: SPECIFIC TE SOURCE CODE NUMBER DIGITS AS REQUIRED

- CONSULT TE CONNECTIVITY DATA SHEET L000810
- CONTACT TE CONNECTIVITY ENGINEERING PRIOR TO DESIGNING INTO AN APPLICATION.
- PACKAGING : SECURELY VACUUM PACKAGED IN BULK

I	RESISTOR (0ohm)	4
I	SMA PCB VERT JACK	3
I	EVALUATION BOARD	2
I	PCB ANTENNA	1
QTY	DESCRIPTION	ITEM



THIS DRAWING IS A CONTROLLED DOCUMENT.		DWN DW.PARK 10AUG2023	TE Connectivity NAME PCB ANT, SMD, SCSP B-2b, 2496-5000MHZ -				
DIMENSIONS: mm		CHK SJ.NOH 10AUG2023					
TOLERANCES UNLESS OTHERWISE SPECIFIED:		APVD JH.KIM 10AUG2023					
0 PLC ±- 1 PLC ±- 2 PLC ±- 3 PLC ±- 4 PLC ±- ANGLES ±-		PRODUCT SPEC 108-61420					
MATERIAL SEE NOTE2		APPLICATION SPEC -	SIZE A3	CAGE CODE 00779	DRAWING NO C=L000810	RESTRICTED TO -	
-		WEIGHT -	CUSTOMER DRAWING		SCALE 1:1	SHEET 3 OF 3	REV 2