

1) Sensing surface, 2) Housing, 3) Cover



Basic features

Approval/Conformity	CE UKCA WEEE
Basic standard	IEC 60947-5-2
Scope of delivery	Screwdriver Short guide
Sensitivity	media-dependent, adjustable
Series	S03

Display/Operation

Function indicator	yes
Power indicator	no

Electrical connection

Polarity reversal protected	yes
Protection against device mix-ups	yes
Short-circuit protection	yes

Electrical data

Load capacitance max. at U_e	10 μ F
No-load current I_o max. at U_e	15 mA
Operating voltage U_b	10...35 VDC
Rated insulation voltage U_i	75 V DC
Rated operating current I_e	100 mA
Rated operating voltage U_e DC	24 V
Ready delay t_v max.	300 ms
Residual current I_r max.	200 μ A
Ripple max. (% of U_e)	10 %
Switching frequency	5 Hz
Utilization category	DC -13
Voltage drop static max.	2.7 V

Environmental conditions

Ambient temperature	-30...125 °C
Contamination scale	2
IP rating	IP67, sensing surface: IP68 10 bar

Functional safety

MTTF (40 °C)	873 a
--------------	-------

Interface

Switching output	PNP normally open (NO)
------------------	------------------------

Capacitive Sensors
BCS S03T401-PSCFNH-KM16-T02
Order Code: BCS00A6

BALLUFF

Material

Cover material	Aluminium, Die casting
Housing material	1.4305 stainless steel, Connection thread
Material sensing surface	PTFE

Mechanical data

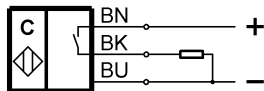
Dimension	54.8 x 48.5 x 106 mm
Installation	non-flush
Pressure rating max.	10 bar
Thread (A)	3/8" NPTF
Tightening torque	1.5 Nm

Remarks

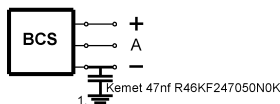
The potentiometer does not have a fixed stop, but can be turned endlessly without destroying anything.
If no change in the switching signal is detected, the potentiometer should be turned forwards or backwards until a signal change occurs at the output.
For more information about MTTF and B10d see MTTF / B10d Certificate

Indication of the MTTF- / B10d value does not represent a binding composition and/or life expectancy assurance; these are simply experiential values with no warranty implications. These declared values also do not extend the expiration period for defect claims or affect it in any way.

Wiring Diagrams



Installation remarks



1) Machine GND