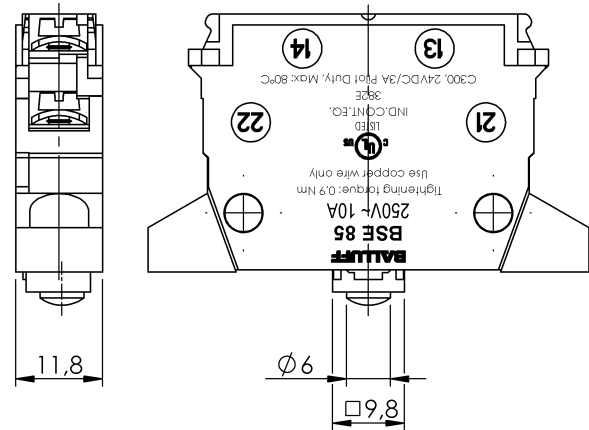
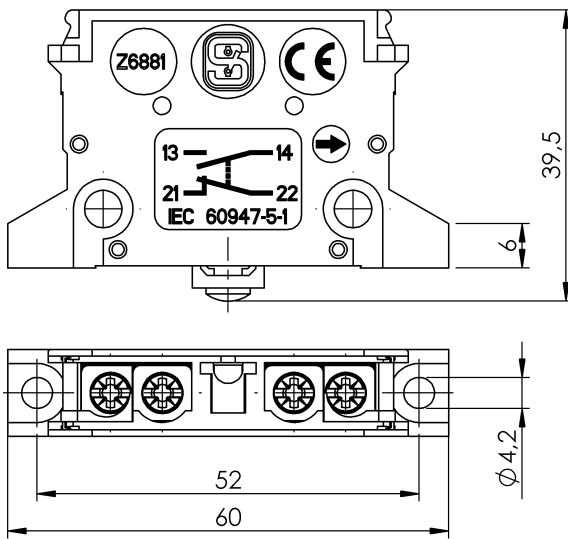


Mechanical Cam Switches  
**BSE 85-RK**  
 Order Code: BSE000N

# BALLUFF



### Basic features

|                     |  |
|---------------------|--|
| Approval/Conformity | CE<br>UKCA<br>cULus<br>CCC<br>WEEE               |
| Bounce time max.    | 3.00 ms  |
| Switching time      | 5 ms   |
| Use with series     | EGT F60<br>RGT 100<br>RGT 61<br>RGT 62<br>RGT 72 |

### Electrical connection

|                 |   |
|-----------------|---|
| Connection      | M3.5  |
| Connection type | 1. Switch position: Screw terminal  |
| Contact system  | Dual changeover<br>One NO and one NC<br>galvanically isolated<br>Double-interrupting<br>NC forced-opening per VDE<br>Normally open with snap funct. |

### Electrical data

|  |                             |
|--|-----------------------------|
| Contact arrangement                      | NC: 21+22<br>NO: 13+14      |
| Contact resistance max.                  | 40 mOhm                     |
| Contact resistance max., note            | New condition               |
| Continuous current                       | 1. Switch position: 6.0 A   |
| Mechanical life expectancy min.          | 1 mil. switching operations |
| Minimum load at 24 V DC                  | 20 mA                       |
| Nominal voltage                          | 250 VAC                     |
| Switching actuation force max.           | 18.00 N                     |
| Switching capacity at 250 V AC 40...60Hz | 2 A cos φ = 0.8             |
| Switching operations per minute          | 160                         |
| Switching principle                      | Snap switch                 |
| Switchover time max.                     | 10 ms                       |

### Environmental conditions

|                     |            |
|---------------------|------------|
| Ambient temperature | -5...85 °C |
|---------------------|------------|

### Material

|                   |                            |
|-------------------|----------------------------|
| Cover material    | Thermoplast                |
| Housing material  | Thermoplast, GF            |
| Material contacts | Silver                     |
| Material contacts | 1. Switch position: Silver |

### Mechanical data

|                          |                     |
|--------------------------|---------------------|
| Connection cross-section | 1.5 mm <sup>2</sup> |
| Tightening torque max.   | 120 Ncm             |