

4

3

2

1

© 2022 TE Connectivity, a TE Connectivity Ltd. company. All Rights Reserved.

PARAMETER	SPECIFICATION										
Antenna Model	L000434-01 / L000434-02 / L000434-03										
Alias Part No	VNK6172B-530A / VNK6172B-530H / VNK6172W-530A										
Number of Ports	9 (4x- 3G/LTE/4G/5G Cellular, 4x- Wi-Fi 6E, 1x- L1+L5 GNSS)										
Port Configuration (Label)	4x- 3G/LTE/4G/ISM/CBRS (Cellular)					4x - Wi-Fi 6E					
Frequency Bands, MHz	617-698	698-960	1427-1511	1690-2700	3300-4200	4400-6000	6000-7125	2400-2500	4900-6000	6000-7125	
Peak Gain, dBi*	2	6	7	9	9	9	7.5	8	8	7.5	
Total Efficiency (Average), %*	46										
VSWR (Max)**	< 1.9:1	< 1.9:1	< 1.5:1	< 1.4:1	< 1.4:1	< 1.7:1	< 2:1	< 1.5:1	< 1.4:1	< 1.4:1	
Isolation- Cellular-to-Cellular/BT Elements,	11	11	21	20	29	34	39	N/A			
Isolation- Wi-Fi-to-Wi-Fi Elements, dB**	N/A										
Max Gain ±30° above Horizon	5150-5250 MHz					7					8
@ 5 GHz U-NII Bands, dBi*	5250-5350 MHz					7					7
	5470-5725 MHz					7.5					7
	5725-5850 MHz					7					7
Max Power @ Ambient 20°C, Watts	10										1
Connector Type	L000434-01 @ SMA-Male L000434-02 @ FAKRA-D L000434-03 @ SMA-Male					L000434-01 @ RP SMA-Male L000434-02 @ FAKRA-I L000434-03 @ RP SMA-Male					
Polarization	Linear										
Nominal Impedance, Ω	50										
Weight, g (lbs)	2380 (5.25)										
Cables	1ft. RG174LL- pigtails/Staggered; 16ft. RG58LL- extension cables										
Mounting Type	Fixed Stud M20										
Antenna Dimension Ht x Dia, mm (inches)	68 x 187 (2.7 x 7.4)										
Radome Color	Black/White										
Radome Material	PC, UL94-V0										
Baseplate Material	Aluminium										
Ingression Protection	IP67, IP69K										
UV Rated	ASTM D4674										
Operating Temperature, °C (°F)	-40 to +85 (-40 to 185)										
Storage Temperature, °C (°F)	-40 to +85 (-40 to 185)										
Humidity Rating	MIL-STD-810G, 507.5, Procedure II, Aggravated Humidity @ 95%										
Flammability Rating	UL94 V0										
Mechanical Shock Rating	IEC 60068-2-27, Secured Cross Country Vehicles										
Vibration Test Rating	MIL-STD-810G, Method 514.6, Category 4, Highway Truck Vibration										
Material Substance Compliance	RoHS										
Wind Velocity (MPH)- Operational	100										
Wind Velocity (MPH)- Survival	136										

GNSS ANTENNA SPECIFICATIONS		
Frequency, MHz		1164-1189; 1559-1610
Passive Antenna	1176.45 MHz	-0.4 Typ.
Peak Gain, dBi	1561 MHz	-0.6 Typ.
	1575.42 MHz	0.9 Typ.
	1602 MHz	-0.5 Typ.
LNA Gain, dBi		28 ± 3 Typ.
Noise Figure, dB		3.0 Typ.
Max VSWR		2.0:1
Polarization		RHCP
Nominal Impedance, Ω		50
DC Voltage, Vdc		2~5
Current @ DC 3V, mA		12.5 Typ.
Input Max Power @ DC 3V, dBm		+10
Out-of-band	350-520 MHz	> 65
Rejection, dBc	698-960 MHz	> 70
	1428-1511 MHz	> 40
	1710-2700 MHz	> 65
	4900-5800 MHz	> 75
Cable Type		RG174, Light Gray
Connector		L000434-01 @ SMA-Male L000434-02 @ FAKRA-C L000434-03 @ SMA-Male

REVISIONS				
REV	DESCRIPTION	DATE	DWN	APVD
A	ECO-23-00100; PRODUCTION RELEASE	02MAY2023	LCT	LLT
A1	ADD "IP69K" FOR IP RATING	08JAN2024	IZZ	WTN

187 ± 1

69.9 ± 1

68 ± 1

18 ± 1

SHAKEPROOF WASHER

LOCKING NUT

M20X2.5 THREAD STUD

STUD HEIGHT FROM FOAM

CABLE LENGTH

Antenna is measured on a 2ft x 2ft ground plane.

*Measured with 1ft RG174LL coax cable.

**Measured with 1ft RG174LL pigtail + 16ft RG58LL extension cable.

CABLE LOSS

RG58LL, OD 4.95±0.20mm (ECE R118 Compliant) (P/N: L000326-01)

Frequency, MHz	698	960	1511	2500	2700	3300	4200	4400	4900	6000	7125
Cable Attenuation, dB/m	0.3	0.4	0.5	0.7	0.7	0.8	0.9	1	1.1	1.2	1.3

TCPN	No of PORT	RADOME COLOUR	ANTENNA WEIGHT, g (lbs)	PORTS CONFIGURATION			
				4G/5G	WLAN	BT	GNSS
L000434-01	9	BLACK	2380 (5.25)	4	4	NA	1
L000434-02	9	BLACK	2380 (5.25)	4	4	NA	1
L000434-03	9	WHITE	2380 (5.25)	4	4	NA	1
L000434-04	8	BLACK	2100(4.63)	4	2	1	1
L000434-05	8	BLACK	2100(4.63)	4	2	1	1
L000434-06	8	WHITE	2100(4.63)	4	2	1	1
L000434-07	4	BLACK	1250(2.76)	4	NA	NA	NA
L000434-08	14	BLACK	3410(7.52)	4	8	1	1

THIS DRAWING IS A CONTROLLED DOCUMENT.		DWN	20DEC2022			
		LCTAN				
		CHK			NAME	
		APVD			MULTI PORT VEHICLE ANT, 5G,	
		PRODUCT SPEC			Wi-Fi, BT, GNSS	
		APPLICATION SPEC			RESTRICTED TO	
		WEIGHT	649.38	g	SIZE	A3
		MATERIAL	SEE BOM		CAGE CODE	00779
		FINISH			DRAWING NO	L000434
		CUSTOMER DRAWING		SCALE	1:2	SHEET 1 OF 5
				REV	A1	

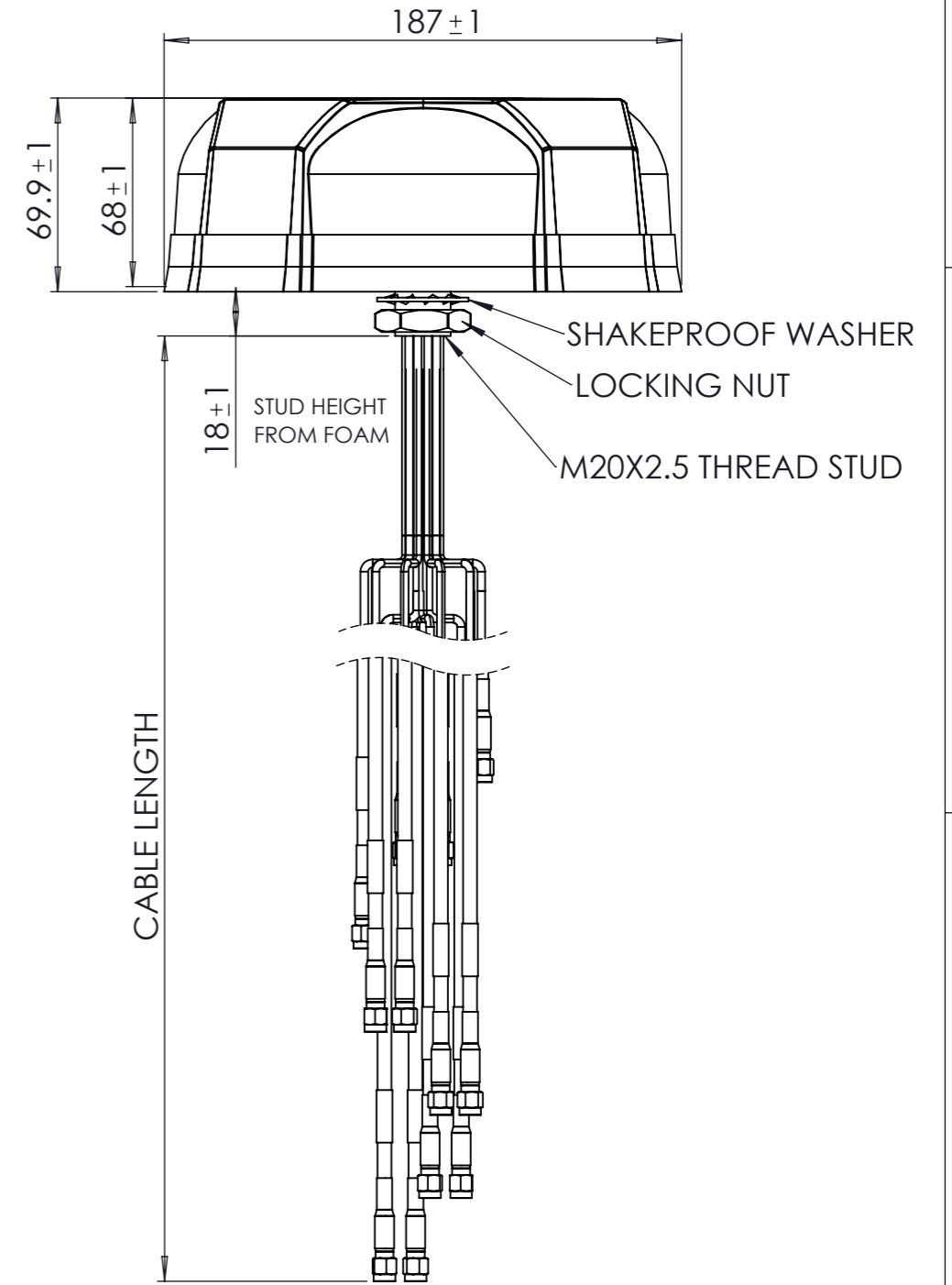
1470-19 (3/13)

REVISIONS

REV	DESCRIPTION	DATE	DWN	APVD
-----	-------------	------	-----	------

PARAMETER	SPECIFICATION																										
Antenna Model	L000434-04 / L000434-05 / L000434-06																										
Alias Part No	VEK61726B-530AG/VEK61726B-530AN/VEK61726W-530AG																										
Number of Ports	8 (4x- 3G/LTE/4G/5G Cellular, 2x- Wi-Fi 6E, 1x- Bluetooth, 1x- L1+L5 GNSS)																										
Port Configuration (Label)	4x- 3G/LTE/4G/5G Cellular				8x - Wi-Fi 6E				1x- Bluetooth (BT)																		
Frequency Bands, MHz	617-698	698-960	1427-1511	1690-2700	3300-4200	4400-6000	6000-7125	2400-2500	4900-6000	6000-7125	2400-2500																
Peak Gain, dBi*	2	6	7	9	9	9	7.5	8	8	7.5	8																
Total Efficiency (Average), %*	46																										
VSWR (Max)**	< 1.9:1	< 1.9:1	< 1.5:1	< 1.4:1	< 1.4:1	< 1.7:1	< 2:1	< 1.5:1	< 1.4:1	< 1.4:1	< 1.5:1																
Isolation- Cellular-to-Cellular/BT Elements,	11	11	21	20	29	34	39	N/A			22																
Isolation- Wi-Fi-to-Wi-Fi Elements, dB**	N/A																										
Max Gain ±30° above Horizon	5150-5250 MHz				7				8			N/A															
@ 5 GHz U-NII Bands, dBi*	5250-5350 MHz				7				7			N/A															
	5470-5725 MHz				7.5				7			N/A															
	5725-5850 MHz				7				7			N/A															
Max Power @ Ambient 20°C, Watts	10																										
Connector Type	L000434-04 @ SMA-Male			L000434-05 @ FAKRA-D			L000434-06 @ SMA-Male			L000434-04 @ RP SMA-Male			L000434-05 @ FAKRA-I			L000434-06 @ RP SMA-Male			L000434-04 @ SMA-Male			L000434-05 @ FAKRA-Z			L000434-06 @ SMA-Male		
Polarization	Linear																										
Nominal Impedance, Ω	50																										
Weight, g (lbs)	2100 (4.63)																										
Cables	1ft. RG174LL- pigtails/Staggered; 16ft. RG58LL- extension cables																										
Mounting Type	Fixed Stud M20																										
Antenna Dimension Ht x Dia, mm (inches)	68 x 187 (2.7 x 7.4)																										
Radome Color	Black/White																										
Radome Material	PC, UL94-V0																										
Baseplate Material	Aluminium																										
Ingression Protection	IP67, IP69K																										
UV Rated	ASTM D4674																										
Operating Temperature, °C (°F)	-40 to +85 (-40 to 185)																										
Storage Temperature, °C (°F)	-40 to +85 (-40 to 185)																										
Humidity Rating	MIL-STD-810G, 507.5, Procedure II, Aggravated Humidity @ 95%																										
Flammability Rating	UL94 V0																										
Mechanical Shock Rating	IEC 60068-2-27, Secured Cross Country Vehicles																										
Vibration Test Rating	MIL-STD-810G, Method 514.6, Category 4, Highway Truck Vibration																										
Material Substance Compliance	RoHS																										
Wind Velocity (MPH)- Operational	100																										
Wind Velocity (MPH)- Survival	136																										

GNSS ANTENNA SPECIFICATIONS		
Frequency, MHz	1164-1189; 1559-1610	
Passive Antenna	1176.45 MHz	-0.4 Typ.
Peak Gain, dBi	1561 MHz	-0.6 Typ.
	1575.42 MHz	0.9 Typ.
	1602 MHz	-0.5 Typ.
LNA Gain, dBi	28 ± 3 Typ.	
Noise Figure, dB	3.0 Typ.	
Max VSWR	2.0:1	
Polarization	RHCP	
Nominal Impedance, Ω	50	
DC Voltage, Vdc	2~5	
Current @ DC 3V, mA	12.5 Typ.	
Input Max Power @ DC 3V, dBm	+10	
Out-of-band	350-520 MHz	> 65
Rejection, dBc	698-960 MHz	> 70
	1428-1511 MHz	> 40
	1710-2700 MHz	> 65
	4900-5800 MHz	> 75
Cable Type	RG174, Light Gray	
Connector	L000434-04 @ SMA-Male	
	L000434-05 @ FAKRA-C	
	L000434-06 @ SMA-Male	



Antenna is measured on a 2ft x 2ft ground plane.
 *Measured with 1ft RG174LL coax cable.
 **Measured with 1ft RG174LL pigtail +16ft RG58LL extension cable.

CABLE LOSS											
RG58LL, OD 4.95±0.20mm (ECE R118 Compliant) (P/N: L000326-01)											
Frequency, MHz	698	960	1511	2500	2700	3300	4200	4400	4900	6000	7125
Cable Attenuation, dB/m	0.3	0.4	0.5	0.7	0.7	0.8	0.9	1	1.1	1.2	1.3

TCPN	No of PORT	RADOME COLOUR	ANTENNA WEIGHT, g (lbs)	PORTS CONFIGURATION			
				4G/5G	WLAN	BT	GNSS
L000434-01	9	BLACK	2380 (5.25)	4	4	NA	1
L000434-02	9	BLACK	2380 (5.25)	4	4	NA	1
L000434-03	9	WHITE	2380 (5.25)	4	4	NA	1
L000434-04	8	BLACK	2100(4.63)	4	2	1	1
L000434-05	8	BLACK	2100(4.63)	4	2	1	1
L000434-06	8	WHITE	2100(4.63)	4	2	1	1
L000434-07	4	BLACK	1250(2.76)	4	NA	NA	NA
L000434-08	14	BLACK	3410(7.52)	4	8	1	1

THIS DRAWING IS A CONTROLLED DOCUMENT.		DWN 20DEC2022			
DIMENSIONS: mm		TOLERANCES UNLESS OTHERWISE SPECIFIED:			
		0 PLC ± 0.5		NAME MULTI PORT VEHICLE ANT,5G, Wi-Fi,BT,GNSS	
		1 PLC ± 0.25		PRODUCT SPEC -	
MATERIAL SEE BOM		2 PLC ± 0.13		APPLICATION SPEC -	
		3 PLC ±		SIZE A3	
FINISH		4 PLC ±		CAGE CODE 00779	
		ANGLES ± 30'		DRAWING NO L000434	
WEIGHT 649.38 g		RESTRICTED TO -		CUSTOMER DRAWING	
SCALE 1:2		SHEET 2 OF 5		REV A1	

4

3

2

1

© 2022 TE Connectivity, a TE Connectivity Ltd. company. All Rights Reserved.

REVISIONS

PARAMETER		SPECIFICATION						
Antenna Model	L000434-07							
Alias Part No	VMQ6172B-530K							
Number of Ports	4 (4x- 3G/LTE/4G/5G Cellular)							
Port Configuration (Label)	4x- 3G/LTE/4G/ISM/CBRS (Cellular)							
Frequency Bands, MHz	617-698	698-960	1427-1511	1690-2700	3300-4200	4400-6000	6000-7125	
Peak Gain, dBi*	2	6	7	9	9	9	7.5	
Total Efficiency (Average), %*	46		67	68	67	61	49	
VSWR (Max)**	< 1.9:1	< 1.9:1	< 1.5:1	< 1.4:1	< 1.4:1	< 1.7:1	< 2:1	
Isolation- Cellular-to-Cellular/BT Elements,	11	11	21	20	29	34	39	
Isolation- Wi-Fi-to-Wi-Fi Elements, dB**	N/A							
Max Gain ±30° above Horizon @ 5 GHz U-NII Bands, dBi*	5150-5250 MHz		7					
	5250-5350 MHz		7					
	5470-5725 MHz		7.5					
	5725-5850 MHz		7					
Max Power @ Ambient 20°C, Watts	10							
Connector Type	SMA-Male							
Polarization	Linear							
Nominal Impedance, Ω	50							
Weight, g (lbs)	1250 (2.76)							
Cables	1ft. RG174LL- pigtails/Staggered; 16ft. RG58LL- extension cables							
Mounting Type	Fixed Stud M20							
Antenna Dimension Ht x Dia, mm (inches)	68 x 187 (2.7 x 7.4)							
Radome Color	Black							
Radome Material	PC, UL94-V0							
Baseplate Material	Aluminium							
Ingression Protection	IP67, IP69K							
UV Rated	ASTM D4674							
Operating Temperature, °C (°F)	-40 to +85 (-40 to 185)							
Storage Temperature, °C (°F)	-40 to +85 (-40 to 185)							
Humidity Rating	MIL-STD-810G, 507.5, Procedure II, Aggravated Humidity @ 95%							
Flammability Rating	UL94 V0							
Mechanical Shock Rating	IEC 60068-2-27, Secured Cross Country Vehicles							
Vibration Test Rating	MIL-STD-810G, Method 514.6, Category 4, Highway Truck Vibration							
Material Substance Compliance	RoHS							
Wind Velocity (MPH)- Operational	100							
Wind Velocity (MPH)- Survival	136							

Antenna is measured on a 2ft x 2ft ground plane.

*Measured with 1ft RG174LL coax cable.

**Measured with 1ft RG174LL pigtail + 16ft RG58LL extension cable.

CABLE LOSS

RG58LL, OD 4.95±0.20mm (ECE R118 Compliant) (P/N: L000326-01)

Frequency, MHz	698	960	1511	2500	2700	3300	4200	4400	4900	6000	7125
Cable Attenuation, dB/m	0.3	0.4	0.5	0.7	0.7	0.8	0.9	1	1.1	1.2	1.3

TCPN	No of PORT	RADOME COLOUR	ANTENNA WEIGHT, g (lbs)	PORTS CONFIGURATION			
				4G/5G	WLAN	BT	GNSS
L000434-01	9	BLACK	2380 (5.25)	4	4	NA	1
L000434-02	9	BLACK	2380 (5.25)	4	4	NA	1
L000434-03	9	WHITE	2380 (5.25)	4	4	NA	1
L000434-04	8	BLACK	2100(4.63)	4	2	1	1
L000434-05	8	BLACK	2100(4.63)	4	2	1	1
L000434-06	8	WHITE	2100(4.63)	4	2	1	1
L000434-07	4	BLACK	1250(2.76)	4	NA	NA	NA
L000434-08	14	BLACK	3410(7.52)	4	8	1	1

THIS DRAWING IS A CONTROLLED DOCUMENT.		DWN 20DEC2022			
DIMENSIONS: mm		TOLERANCES UNLESS OTHERWISE SPECIFIED:			
		0 PLC ± 0.5		NAME MULTI PORT VEHICLE ANT,5G, Wi-Fi,BT,GNSS	
		1 PLC ± 0.25			
MATERIAL SEE BOM		2 PLC ± 0.13		PRODUCT SPEC	
		3 PLC ±		APPLICATION SPEC	
FINISH		4 PLC ±		SIZE A3	
		ANGLES ± 30'		CAGE CODE 00779	
WEIGHT 649.38 g		DRAWING NO L000434		RESTRICTED TO	
CUSTOMER DRAWING		SCALE 1:2		SHEET 3 OF 5	
				REV A1	

1470-19 (3/13)

4

3

2

1

© 2022 TE Connectivity, a TE Connectivity Ltd. company. All Rights Reserved.

REVISIONS

PARAMETER		SPECIFICATION										GNSS ANTENNA SPECIFICATIONS			
Antenna Model		L000434-08										Frequency, MHz	1164-1189; 1559-1610		
Alias Part No		VXX6172B-530AG										Passive Antenna	1176.45 MHz -0.4 Typ.		
Number of Ports		14 (4x- 3G/LTE/4G/5G Cellular, 8x- Wi-Fi 6E, 1x- Bluetooth, 1x- L1+L5 GNSS)										Peak Gain, dBi	1561 MHz -0.6 Typ.		
Port Configuration (Label)		4x- 3G/LTE/4G/ISM/CBRS (Cellular)				8x - Wi-Fi 6E				1x- Bluetooth (BT)		1575.42 MHz 0.9 Typ.			
Frequency Bands, MHz		617-698	698-960	1427-1511	1690-2700	3300-4200	4400-6000	6000-7125	2400-2500	4900-6000	6000-7125	2400-2500	1602 MHz -0.5 Typ.		
Peak Gain, dBi*		3	5	4.5	8	8	9	7	7.5	8.5	9.5	6	LNA Gain, dBi	28 ± 3 Typ.	
Total Efficiency (Average), %*		42										Noise Figure, dB	3.0 Typ.		
VSWR (Max)**		< 1.8:1	< 1.7:1	< 1.8:1	< 1.6:1	< 1.4:1	< 1.6:1	< 1.7:1	< 1.4:1	< 1.5:1	< 1.5:1	< 1.5:1	Max VSWR	2.0:1	
Isolation- Cellular-to-Cellular/BT Elements,		13	13	21	20	26	34	38	N/A		22	22	27	Polarization	RHCP
Isolation- Wi-Fi-to-Wi-Fi Elements, dB**		N/A										Nominal Impedance, Ω	50		
Max Gain ±30° above Horizon	5150-5250 MHz	6										DC Voltage, Vdc	2~5		
@ 5 GHz U-NII Bands, dBi*	5250-5350 MHz	7										Current @ DC 3V, mA	12.5 Typ.		
	5470-5725 MHz	7										Input Max Power @ DC 3V, dBm	+10		
	5725-5850 MHz	7.5										Out-of-band	350-520 MHz > 65		
Max Power @ Ambient 20°C, Watts		10										Rejection, dBc	698-960 MHz > 70		
Connector Type		SMA-Male					RP SMA-MALE					1428-1511 MHz > 40			
Polarization		Linear										1710-2700 MHz > 65			
Nominal Impedance, Ω		50										4900-5800 MHz > 75			
Weight, g (lbs)		3410 (7.52)										Cable Type	RG174, Light Gray		
Cables		1ft. RG174LL- pigtailed/Staggered; 16ft. RG58LL- extension cables										Connector	SMA-Male		
Mounting Type		Fixed Stud M20													
Antenna Dimension Ht x Dia, mm (inches)		68 x 187 (2.7 x 7.4)													
Radome Color		Black													
Radome Material		PC, UL94-V0													
Baseplate Material		Aluminium													
Ingression Protection		IP67, IP69K													
UV Rated		ASTM D4674													
Operating Temperature, °C (°F)		-40 to +85 (-40 to 185)													
Storage Temperature, °C (°F)		-40 to +85 (-40 to 185)													
Humidity Rating		MIL-STD-810G, 507.5, Procedure II, Aggravated Humidity @ 95%													
Flammability Rating		UL94 V0													
Mechanical Shock Rating		IEC 60068-2-27, Secured Cross Country Vehicles													
Vibration Test Rating		MIL-STD-810G, Method 514.6, Category 4, Highway Truck Vibration													
Material Substance Compliance		RoHS													
Wind Velocity (MPH)- Operational		100													
Wind Velocity (MPH)- Survival		136													

SHAKEPROOF WASHER
LOCKING NUT
M20X2.5 THREAD STUD

STUD HEIGHT FROM FOAM

CABLE LENGTH

Antenna is measured on a 2ft x 2ft ground plane.

*Measured with 1ft RG174LL coax cable.

**Measured with 1ft RG174LL pigtail +16ft RG58LL extension cable.

CABLE LOSS

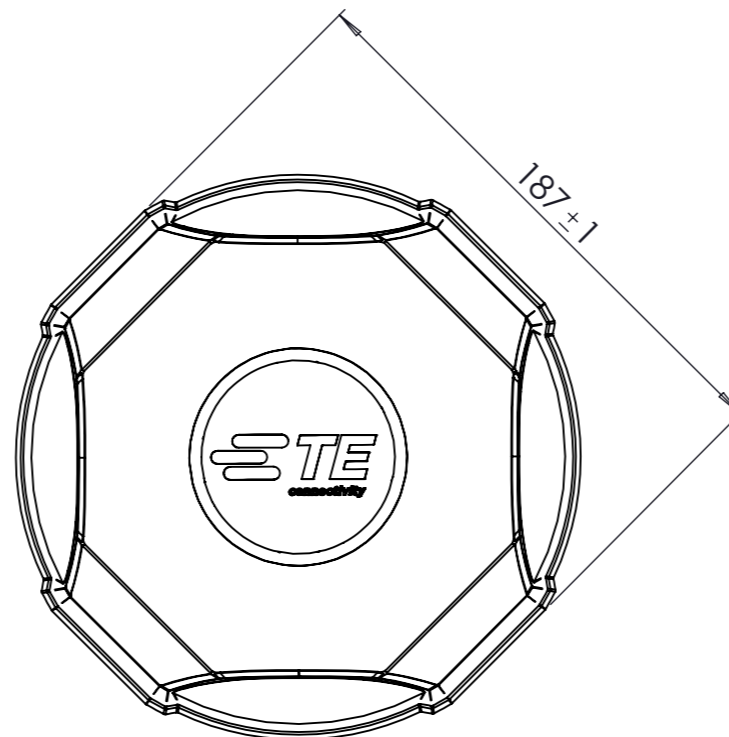
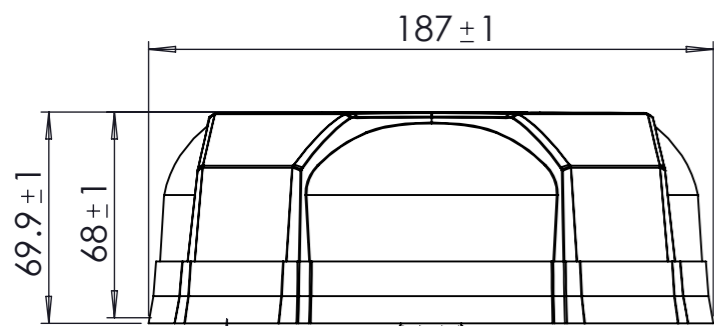
RG58LL, OD 4.95±0.20mm (ECE R118 Compliant) (P/N: L000326-01)

Frequency, MHz	698	960	1511	2500	2700	3300	4200	4400	4900	6000	7125
Cable Attenuation, dB/m	0.3	0.4	0.5	0.7	0.7	0.8	0.9	1	1.1	1.2	1.3

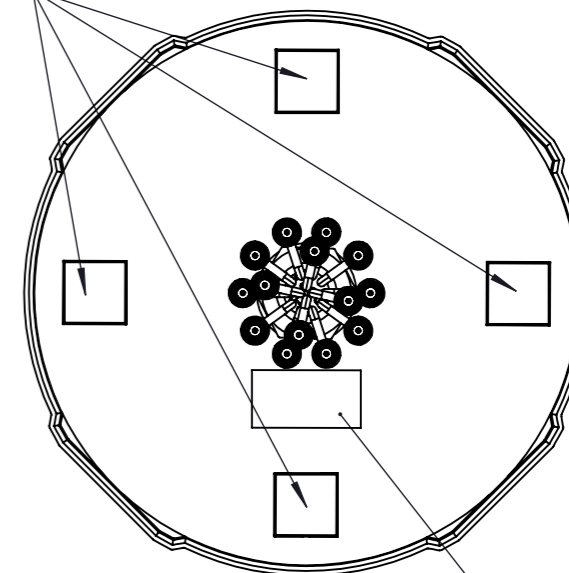
TCPN	No of PORT	RADOME COLOUR	ANTENNA WEIGHT, g (lbs)	PORTS CONFIGURATION			
				4G/5G	WLAN	BT	GNSS
L000434-01	9	BLACK	2380 (5.25)	4	4	NA	1
L000434-02	9	BLACK	2380 (5.25)	4	4	NA	1
L000434-03	9	WHITE	2380 (5.25)	4	4	NA	1
L000434-04	8	BLACK	2100(4.63)	4	2	1	1
L000434-05	8	BLACK	2100(4.63)	4	2	1	1
L000434-06	8	WHITE	2100(4.63)	4	2	1	1
L000434-07	4	BLACK	1250(2.76)	4	NA	NA	NA
L000434-08	14	BLACK	3410(7.52)	4	8	1	1

THIS DRAWING IS A CONTROLLED DOCUMENT.		DWN 20DEC2022			
DIMENSIONS: mm		TOLERANCES UNLESS OTHERWISE SPECIFIED:			
		0 PLC ± 0.5 1 PLC ± 0.25 2 PLC ± 0.13 3 PLC ± 4 PLC ± ANGLES ± 30°		NAME MULTI PORT VEHICLE ANT,5G, Wi-Fi,BT,GNSS	
MATERIAL SEE BOM		FINISH		APVD	
				PRODUCT SPEC	
				APPLICATION SPEC	
				RESTRICTED TO	
		WEIGHT 649.38 g		SIZE A3	
				CAGE CODE 00779	
				DRAWING NO L000434	
				SCALE 1:2	
				SHEET 4 OF 5	
				REV A1	
				CUSTOMER DRAWING	

1470-19 (3/13)



CONDUCTIVE FOAM



UNIT LABEL

18±1
STUD HEIGHT
FROM FOAM

CABLE LENGTH

Cable length (mm)	14 PORTS			9 PORTS			8 PORTS				4 PORTS	
	Label Description (Colour)	(L000434-08) Connector	Label Description (Colour)	(L000434-01) Connector	(L000434-02) Connector	(L000434-03) Connector	Label Description (Colour)	(L000434-04) Connector	(L000434-05) Connector	(L000434-06) Connector	Label Description (Colour)	(L000434-07) Connector
5200 +/-104	4G/5G A (YELLOW)	SMA MALE	4G/5G A (YELLOW)	SMA MALE	FAKRA-D	SMA MALE	4G/5G A (YELLOW)	SMA MALE	FAKRA-D	SMA MALE	4G/5G A (YELLOW)	SMA MALE
5200 +/-104	4G/5G B (YELLOW)	SMA MALE	4G/5G B (YELLOW)	SMA MALE	FAKRA-D	SMA MALE	4G/5G B (YELLOW)	SMA MALE	FAKRA-D	SMA MALE	4G/5G B (YELLOW)	SMA MALE
5230 +/-104	4G/5G C (YELLOW)	SMA MALE	4G/5G C (YELLOW)	SMA MALE	FAKRA-D	SMA MALE	4G/5G C (YELLOW)	SMA MALE	FAKRA-D	SMA MALE	4G/5G C (YELLOW)	SMA MALE
5230 +/-104	4G/5G D (YELLOW)	SMA MALE	4G/5G D (YELLOW)	SMA MALE	FAKRA-D	SMA MALE	4G/5G D (YELLOW)	SMA MALE	FAKRA-D	SMA MALE	4G/5G D (YELLOW)	SMA MALE
5260 +/-104	WLAN 1 (RED)	RP SMA MALE	WLAN 1 (RED)	RP SMA MALE	FAKRA-I	RP SMA MALE	WLAN 1 (RED)	RP SMA MALE	FAKRA-I	RP SMA MALE	NA	NA
5260 +/-104	WLAN 2 (RED)	RP SMA MALE	WLAN 2 (RED)	RP SMA MALE	FAKRA-I	RP SMA MALE	WLAN 2 (RED)	RP SMA MALE	FAKRA-I	RP SMA MALE	NA	NA
5290 +/-104	WLAN 3 (RED)	RP SMA MALE	WLAN 3 (RED)	RP SMA MALE	FAKRA-I	RP SMA MALE	BT (BLUE)	SMA MALE	FAKRA-Z	SMA MALE	NA	NA
5290 +/-104	WLAN 4 (RED)	RP SMA MALE	WLAN 4 (RED)	RP SMA MALE	FAKRA-I	RP SMA MALE	NA			NA	NA	NA
5320 +/-104	WLAN 5 (RED)	RP SMA MALE	NA	NA		NA	NA			NA	NA	NA
5320 +/-104	WLAN 6 (RED)	RP SMA MALE	NA	NA		NA	NA			NA	NA	NA
5350 +/-104	WLAN 7 (RED)	RP SMA MALE	NA	NA		NA	NA			NA	NA	NA
5350 +/-104	WLAN 8 (RED)	RP SMA MALE	NA	NA		NA	NA			NA	NA	NA
5380 +/-104	BT (BLUE)	SMA MALE	NA	NA		NA	NA			NA	NA	NA
5380 +/-104	GNSS (WHITE)	SMA MALE	GNSS (WHITE)	SMA MALE	FAKRA-C	SMA MALE	GNSS (WHITE)	SMA MALE	FAKRA-C	SMA MALE	NA	NA

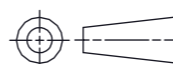
INDICATOR CABLE (REFER TABLE)

THIS DRAWING IS A CONTROLLED DOCUMENT.

DWN LCTAN 20DEC2022
CHK

DIMENSIONS: mm

TOLERANCES UNLESS OTHERWISE SPECIFIED:



- 0 PLC ± 0.5
- 1 PLC ± 0.25
- 2 PLC ± 0.13
- 3 PLC ±
- 4 PLC ±
- ANGLES ± 30'

MATERIAL SEE BOM

FINISH

APVD
PRODUCT SPEC
APPLICATION SPEC

WEIGHT 649.38 g



NAME MULTI PORT VEHICLE ANT,5G, Wi-Fi,BT,GNSS

SIZE A3	CAGE CODE 00779	DRAWING NO L000434	RESTRICTED TO -
---------	-----------------	--------------------	-----------------

CUSTOMER DRAWING SCALE 1:2 SHEET 5 OF 5 REV A1