

1) Sensing surface, 2) Housing, 3) Cover



Basic features

Approval/Conformity	CE UKCA cULus WEEE
Basic standard	IEC 60947-5-2
Sensitivity	adjustable on base unit
Series	G04

Electrical connection

Cable length L	2 m
Connection	Snap-In IP40, Binder 719-Female
Polarity reversal protected	not relevant
Short-circuit protection	not relevant

Electrical data

Operating voltage U_b	4...8 VDC
Rated insulation voltage U_i	75 V DC
Ripple max. (% of U_e)	10 %
Switching frequency	100 Hz
Utilization category	DC -13

Environmental conditions

Ambient temperature	-10...70 °C
Contamination scale	1
IP rating	IP67

Functional safety

MTTF (40 °C)	1813 a
--------------	--------

Interface

Interface	Special interface
-----------	-------------------

Material

Cover material	POM
Housing material	1.4301 stainless steel
Material jacket	PUR
Material sensing surface	PTFE

Mechanical data

Dimension	Ø 4 x 29 mm
Installation	for flush mounting
Size	D4.0

Range/Distance

Hysteresis H max. (% of S_r)	20.0 %
Measuring range	0.1...1 mm
Rated operating distance S_n	1 mm
Repeat accuracy max. (% of S_r)	2 %
Temperature drift max. (% of S_r)	20 %

Remarks

Required accessories, sensor amplifier BAE SA-...

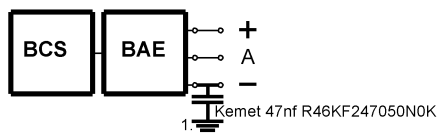
For more information about MTTF and B10d see MTTF / B10d Certificate

Indication of the MTTF- / B10d value does not represent a binding composition and/or life expectancy assurance; these are simply experiential values with no warranty implications. These declared values also do not extend the expiration period for defect claims or affect it in any way.

Connector Drawings



Installation remarks



1) Machine GND