

1) Sensing surface, 2) Housing, 3) Cover



**Basic features**

<b>Approval/Conformity</b>	CE UKCA WEEE
<b>Basic standard</b>	IEC 60947-5-2
<b>Scope of delivery</b>	Nut Screwdriver
<b>Sensitivity</b>	media-dependent, adjustable
<b>Series</b>	S01

**Display/Operation**

<b>Function indicator</b>	yes
<b>Power indicator</b>	no

**Electrical connection**

<b>Polarity reversal protected</b>	yes
<b>Protection against device mix-ups</b>	yes
<b>Short-circuit protection</b>	yes

**Electrical data**

<b>Load capacitance max. at Ue</b>	10 µF
<b>Operating voltage U<sub>b</sub></b>	10...35 VDC
<b>Protection class</b>	II
<b>Rated insulation voltage U<sub>i</sub></b>	75 V DC
<b>Rated operating current I<sub>e</sub></b>	100 mA
<b>Rated operating voltage U<sub>e</sub> DC</b>	24 V
<b>Ready delay t<sub>v</sub> max.</b>	300 ms
<b>Residual current I<sub>r</sub> max.</b>	200 µA
<b>Ripple max. (% of U<sub>e</sub>)</b>	10 %
<b>Switching frequency</b>	5 Hz
<b>Utilization category</b>	DC -13
<b>Voltage drop static max.</b>	2.7 V

**Environmental conditions**

<b>Ambient temperature</b>	-30...125 °C
<b>Contamination scale</b>	3
<b>IP rating</b>	IP67, sensing surface: IP68 10 bar

**Functional safety**

<b>MTTF (40 °C)</b>	873 a
---------------------	-------

**Interface**

<b>Switching output</b>	NPN normally open (NO)
-------------------------	------------------------

Capacitive Sensors  
**BCS S01T401-NSCFNG-KM16-T02**  
Order Code: BCS006K

**BALLUFF**

**Material**

Cover material	Aluminium, Die casting
Housing material	1.4305 stainless steel
Material sensing surface	PTFE

**Mechanical data**

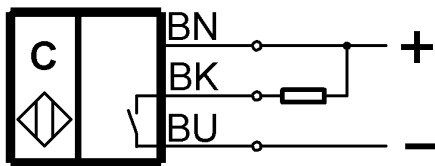
Dimension	54.8 x 48.5 x 106 mm
Installation	non-flush
Pressure rating max.	10 bar
Thread (A)	M18x1
Tightening torque	1.5 Nm

**Remarks**

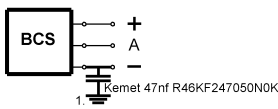
The potentiometer does not have a fixed stop, but can be turned endlessly without destroying anything.  
If no change in the switching signal is detected, the potentiometer should be turned forwards or backwards until a signal change occurs at the output.  
For more information about MTTF and B10d see MTTF / B10d Certificate

Indication of the MTTF- / B10d value does not represent a binding composition and/or life expectancy assurance; these are simply experiential values with no warranty implications. These declared values also do not extend the expiration period for defect claims or affect it in any way.

**Wiring Diagrams**



**Installation remarks**



1) Machine GND