

1) Exit direction 90° connector, 2) Output function, 3) Ultrasonic transducer axis, 4) Operating voltage



Basic features

Application	Distance measurement
Approval/Conformity	cULus CE WEEE UKCA
Operating mode	Analog measurement (output curve)
Series	W18M1

Display/Operation

Adjuster	no
Display	LED green: Power Object in range - LED yellow

Electrical connection

Connection	M12x1-Male, 5-pin
Polarity reversal protected	yes
Short-circuit protection	yes

Electrical data

Current draw max.	40 mA
Input function	Output curve rising/falling Teach in the working range Factory setting (Reset) Synchronization on/off Synchronization signal
Load resistance RL min. (Analog V)	100 kOhm at UB > 15 V
Operating voltage Ub	15...30 VDC
Rated operating voltage Ue DC	24 V
Synchronization	internal, max. 10 sensors
Ultrasonic Frequency	320 kHz

Environmental conditions

Ambient temperature	-25...70 °C
IP rating	IP67
Storage temperature	-40...85 °C

Functional safety

MTTF (40 °C)	1134 a
---------------------	--------

Ultrasonic Sensors
BUS W18M1-XA-03/025-S92G
Order Code: BUS0050

BALLUFF

Interface

Analog output	Analog, voltage 0...10 V
Output characteristic	linear rising/falling

Material

Housing material	Brass, nickel-plated PBT
Material sensing surface	PU foam/Epoxy resin/Glass
Surface protection	nickel-plated

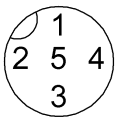
Mechanical data

Dimension	Ø 18 x 68.4 mm
Mounting part	Nut M18x1

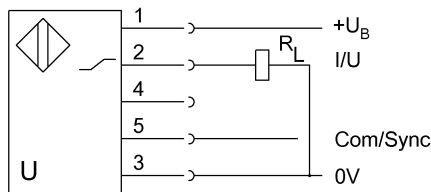
Range/Distance

Measuring range	30...350 mm
Rated operating distance S_n	250 mm
Repeat accuracy	± 0.15 %FS
Resolution	≤ 0.070 mm

Connector Drawings



Wiring Diagrams



Technical Drawings

