

Basic features

Approval/Conformity WEEE

Electrical connection

Cable drag chain compatible
 Connector 01, version straight
 Number of pins 5
 System Molded

Electrical data

Operating voltage U_b 24 VAC
 Rated current (40 °C) 4.0 A

Environmental conditions

Ambient temperature -20...80 °C
 IP rating IP68

Material

Material contact carrier PUR
 Material contacts Brass
 Material cover nut Die-cast zinc
 Material grip PUR

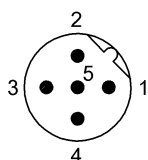
Mechanical data

Cable properties drag chain compatible
 Tightening torque pigtail 0.6 Nm

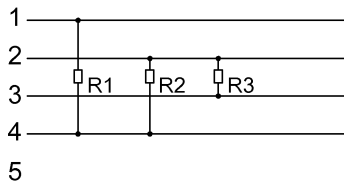
Remarks

Enclosure rating per IEC 60529, only in screwed state with the associated mating piece.

Connector Drawings



Wiring Diagrams



R1=390Ω
R2=220Ω
R3=390Ω