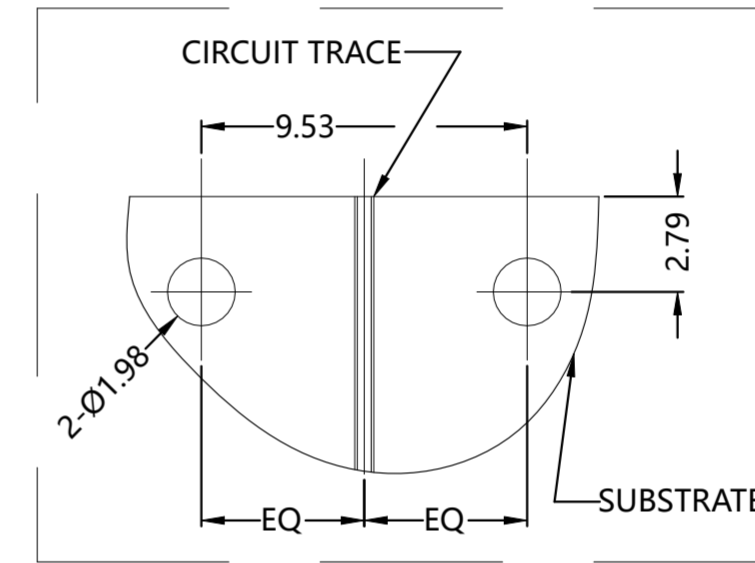
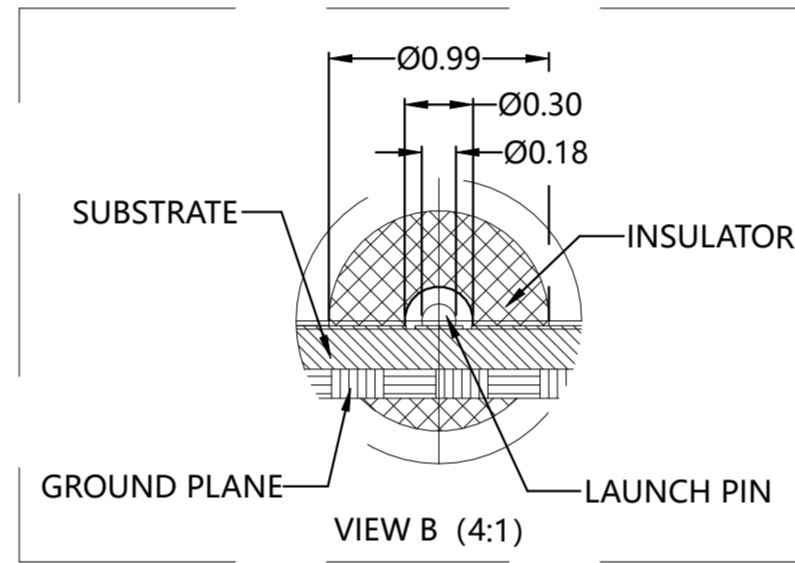
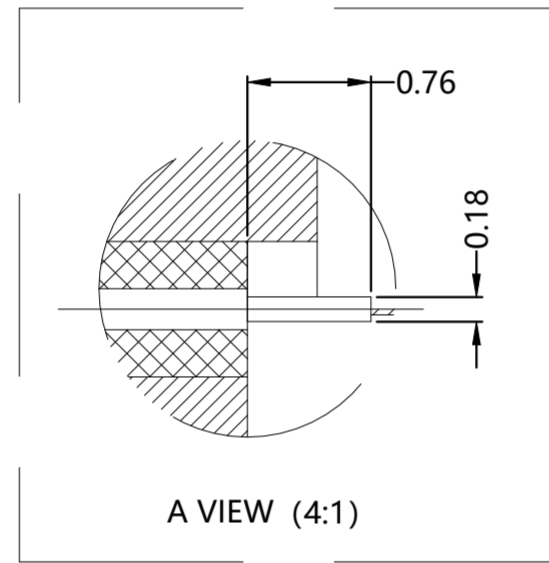
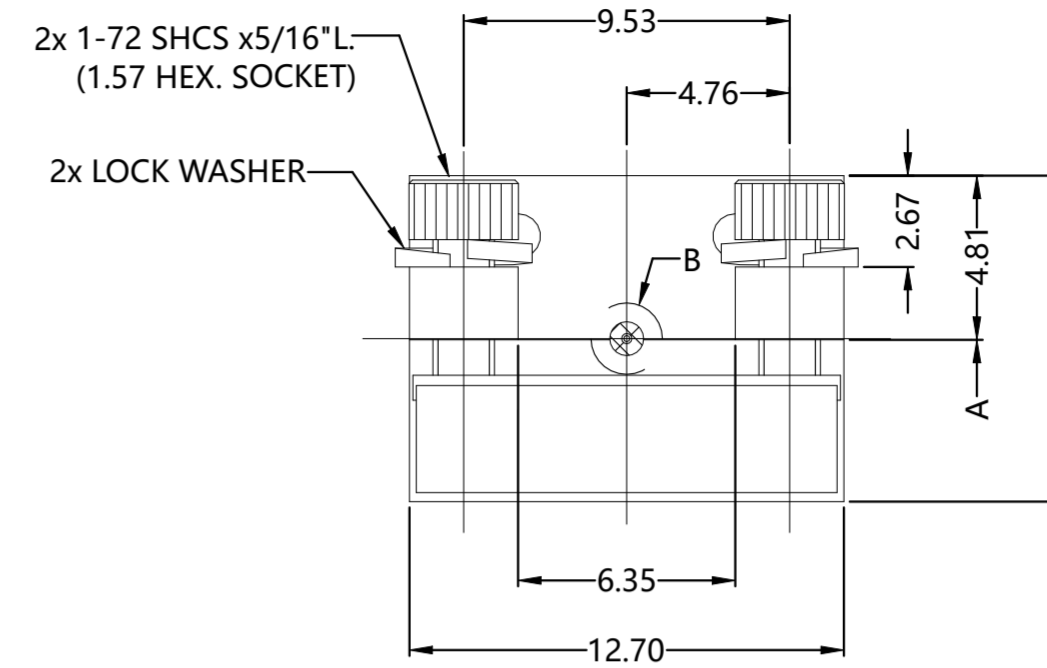
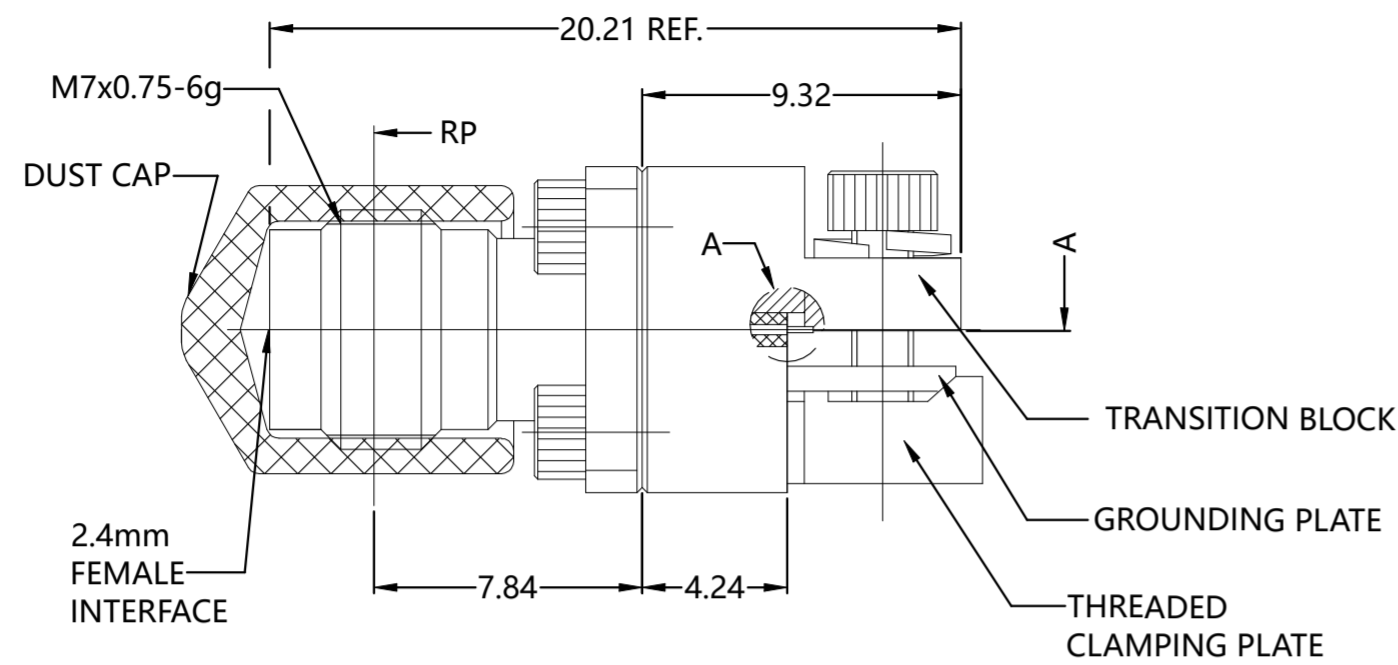


REVISIONS					
P	LTR	DESCRIPTION	DATE	DWN	APVD
B		ECR-23-195161; VSWR 1.4 WAS <1.4	18DEC2023	TP	WH



ELECTRICAL	MECHANICAL	ENVIRONMENTAL
Impedance (Ohm): <u>50</u>	Interface Dimension <u>2.4mm</u>	TEMPERATURE RANGE <u>-40 C°~+85 C°</u>
Frequency Range: <u>DC to 50GHz</u>	Force to Engage and Disengage Engage: <u>N/A</u> Disengage: <u>N/A</u>	ROHS <u>COMPLIANT</u>
Voltage Rating (Peak) @ Sea Level <u>335 V RMS</u>	Center Contact Captivation Axial (lbs) <u>6 MIN</u> Radial (In/Oz) <u>N/A</u>	
Insulation Resistance (MIN.) <u>500 M ohms</u>	Recommend Coupling Torque <u>N/A</u>	
Contact Resistance (mohms MAX) Center Contact <u>3.0</u> Outer Contact <u>2.0</u>	Coupling Nut Retention Force <u>N/A</u>	
Dielectric Withstand Voltage: <u>500 V RMS Max</u>	Cable Retention Axial (Lbs) <u>N/A</u>	
Insertion Loss : According to the PCB	Mating cycles <u>500 cycles</u>	
VSWR: <u>1.4 SQRT(TEST VALUE)</u>		

PART NUMBER	DESCRIPTION	DUST CAP	PVC	BLACK
		TRANSITION BLOCK	BRASS C3604	NICKEL/COPPER
		CONTACT PIN	BERYLLIUM COPPER	GOLD/COPPER
		INSULATOR	PEI & PTFE	NATURAL
		BODY	STAINLESS STEEL	PASSIVATION
		MATERIAL		PLATING

THIS DRAWING IS A CONTROLLED DOCUMENT.

DWN	ED	27JUN2023
CHK	ED	27JUN2023
APVD	WH	27JUN2023

TE TE Connectivity

NAME: 2.4mm FEMALE S/T CONNECTOR WITH END LAUNCH,500HM

SIZE	CAGE CODE	DRAWING NO	RESTRICTED TO
A2	00779	C=2441872	-

CUSTOMER DRAWING SCALE 1:1 SHEET 1 of 1 REV B