

1) Sensing surface



Basic features

Approval/Conformity	CE UKCA cULus WEEE
Base type deviation	Cable variant
Basic standard	IEC 60947-5-2 IEC 60947-5-7

Display/Operation

Power indicator	no
-----------------	----

Electrical connection

Cable diameter D	3.00 mm
Cable length L	3 m
Conductor cross-section	0.14 mm ²
Connection type	Cable, 3.00 m, PUR
Number of conductors	3
Polarity reversal protected	no
Protection against device mix-ups	no
Short-circuit protection	no

Electrical data

Limit frequency -3 dB	1000 Hz
Load resistance RL min.	5000 Ohm
No-load current I _o max. at U _e	15 mA
Operating voltage U _b	21.6...26.4 VDC
Rated insulation voltage U _i	75 V DC
Rated operating voltage U _e DC	24 V
Ripple max. (% of U _e)	10 %
Slope U	6.67 V/mm

Environmental conditions

Ambient temperature	10...60 °C
Contamination scale	3
EN 60068-2-27, Shock	Half-sinus, 30 g _n , 11 ms
EN 60068-2-6, Vibration	55 Hz, amplitude 1 mm, 3x30 min
IP rating	IP67

Functional safety

MTTF (40 °C)	640 a
--------------	-------

Interface

Analog output	Analog, voltage 0...10 V
Output characteristic	falling on approach
Output voltage at SI max.	10 V
Output voltage at SI min.	0 V
Output voltage at Se	5 V

Material

Housing material	Aluminium, Anodized
Material jacket	PUR
Material sensing surface	PBT

Range/Distance

Linearity range SI	0.5...2 mm
Measuring range	0.5...2 mm
Non-linearity max.	±45 µm
Repeat accuracy per BWN	±12 µm
Temperature drift max. from end value	±5.0 %

Mechanical data

Dimension	30 x 20 x 8 mm
Installation	for flush mounting

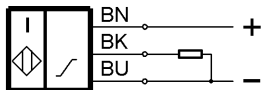
Remarks

The specified parameters apply to the temperature range of +10...+60 °C. Function is also guaranteed in the ranges -10...+10 °C and +60...+70 °C. Values referenced to axial approach of St 37 target. For other materials correction factors are applied.

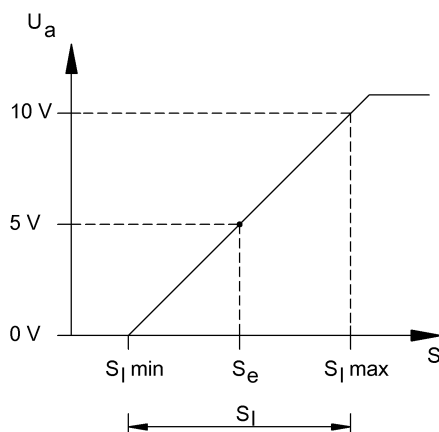
For more information about MTTF and B10d see MTTF / B10d Certificate

Indication of the MTTF- / B10d value does not represent a binding composition and/or life expectancy assurance; these are simply experiential values with no warranty implications. These declared values also do not extend the expiration period for defect claims or affect it in any way.

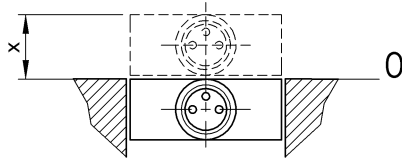
Wiring Diagrams



Technical Drawings



Help Views



^L
Installation X = 0...8.0