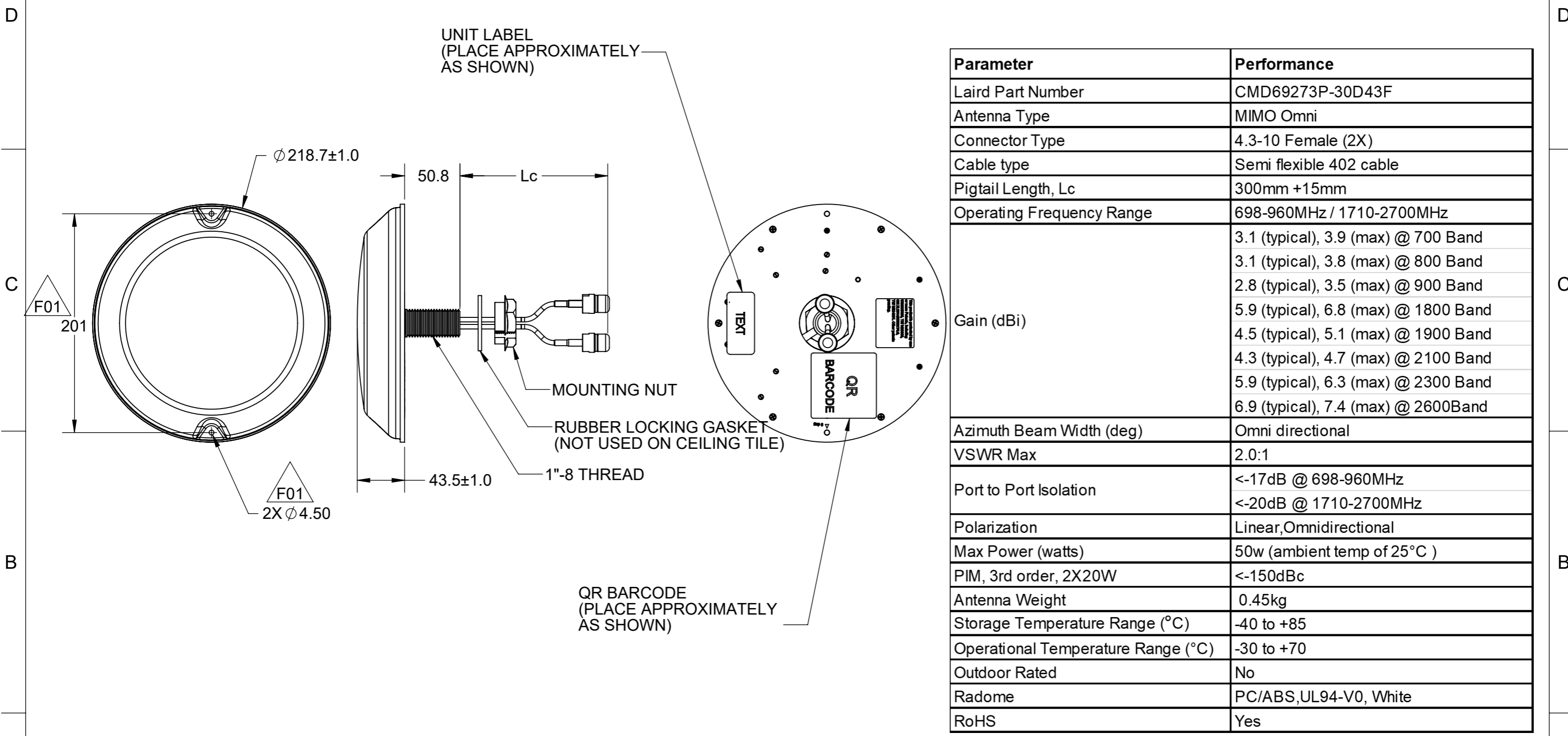


REVISIONS					
REV.	ECR#	ZONE	DESCRIPTION	CHANGED BY/DATE	APPROVED BY/DATE
F01	ECO-18-00437		ADDED MOUNTING HOLES DIMENSION & DISTANCE	WT NG 12OCT18	WT NG 12OCT18



Parameter	Performance
Laird Part Number	CMD69273P-30D43F
Antenna Type	MIMO Omni
Connector Type	4.3-10 Female (2X)
Cable type	Semi flexible 402 cable
Pigtail Length, Lc	300mm +15mm
Operating Frequency Range	698-960MHz / 1710-2700MHz
Gain (dBi)	3.1 (typical), 3.9 (max) @ 700 Band 3.1 (typical), 3.8 (max) @ 800 Band 2.8 (typical), 3.5 (max) @ 900 Band 5.9 (typical), 6.8 (max) @ 1800 Band 4.5 (typical), 5.1 (max) @ 1900 Band 4.3 (typical), 4.7 (max) @ 2100 Band 5.9 (typical), 6.3 (max) @ 2300 Band 6.9 (typical), 7.4 (max) @ 2600Band
Azimuth Beam Width (deg)	Omni directional
VSWR Max	2.0:1
Port to Port Isolation	<-17dB @ 698-960MHz <-20dB @ 1710-2700MHz
Polarization	Linear, Omnidirectional
Max Power (watts)	50w (ambient temp of 25°C)
PIM, 3rd order, 2X20W	<-150dBc
Antenna Weight	0.45kg
Storage Temperature Range (°C)	-40 to +85
Operational Temperature Range (°C)	-30 to +70
Outdoor Rated	No
Radome	PC/ABS, UL94-V0, White
RoHS	Yes

The component(s), including any plating, finishes, coatings, chemicals and surfaces treatments, supplied in this document/drawing must conform and comply with the latest issue of Laird Specification LT-GES-001, which fully includes but is not limited to all contents of Directive (EU) 2015/863 (RoHS Directive), as well as includes requirements of the Joint Industry Guide standard JIG-101, April 2005. The component(s) in this document/drawing may be subject to a full compound analysis for proof of compliance. The latest issue of Laird Specification LT-GES-001, (General Specification for the Environment) is readily available upon request from the supplier.

UNLESS OTHERWISE NOTED, THIS DOCUMENT CONTAINS LAIRD CONFIDENTIAL INFORMATION. REPRODUCTION, USE, DISCLOSURE OR TRANSMITTAL OF ALL OR ANY PART OF THIS DOCUMENT IS PROHIBITED EXCEPT TO THE EXTENT APPROVED IN WRITING BY AN AUTHORIZED REPRESENTATIVE OF LAIRD. LAIRD RESERVES ALL RIGHTS UNDER PATENTS, TRADEMARKS, COPYRIGHTS AND TRADE SECRETS. COPYRIGHT, LAIRD 2017, ALL RIGHTS RESERVED.

MATERIAL: N/A		THIRD ANGLE PROJECTION		 IAS, PENANG MALAYSIA	
FINISH: N/A		 DO NOT SCALE DRAWING			
APPROVALS		DATE		TITLE:	
DRAWN BY	WT NG	12OCT18		MOUNTING & OUTLINE CMD69273P-30D43F	
ELEC. ENG.	KJ NG	12OCT18			
MECH. ENG.	LL TEOH	12OCT18		INTERPRET DIMENSIONING AND TOLERANCING IN ACCORDANCE WITH ASME Y14.5M-2009 TOLERANCES UNLESS OTHERWISE SPECIFIED DIMENSIONS ARE IN MILLIMETERS	
MFG./OPS.	YEAP	12OCT18		ANGLE: ±30' 0 PLACE DECIMAL: ±0.5 1 PLACE DECIMAL: ±0.25 2 PLACE DECIMAL: ±0.13 SURFACE ROUGHNESS 1.6/√	
SIZE		DWG. NO.		REV	
A3		CMD69273P-30D43FMO		F01	
SCALE: 1:3.5		PREVIOUS#		SHEET 1 OF 1	