

DO NOT SCALE FROM THIS PRINT

DESIGNED & DIMENSIONED IN MILLIMETERS (INCHES FOR REFERENCE)

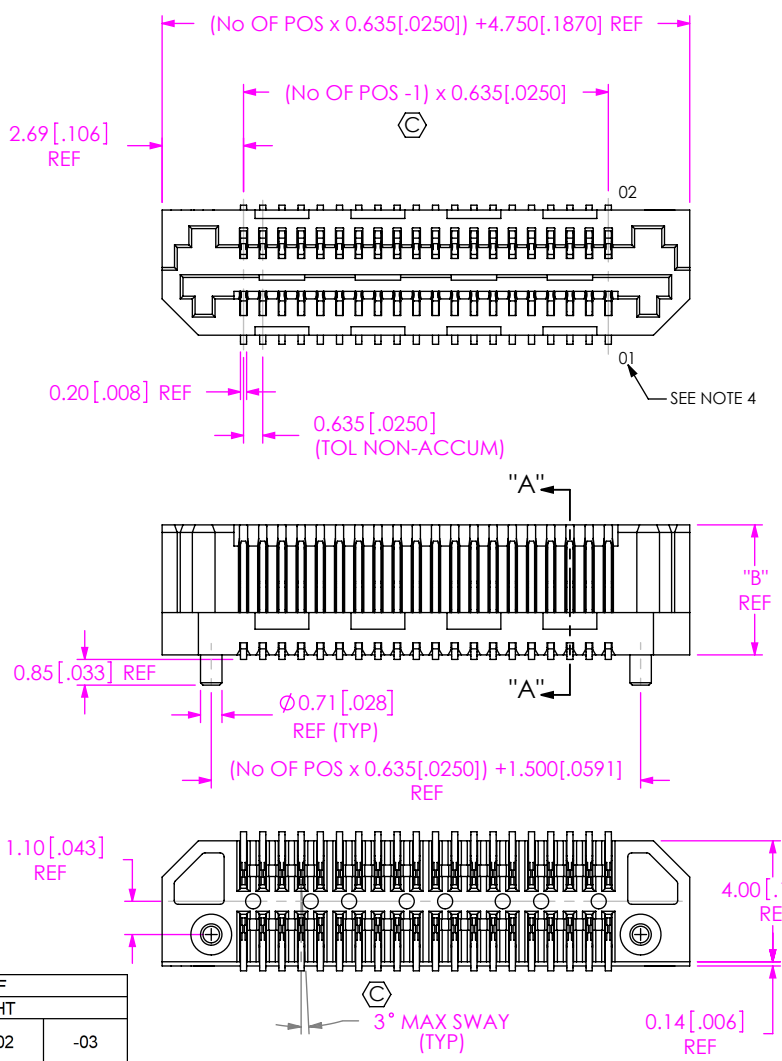


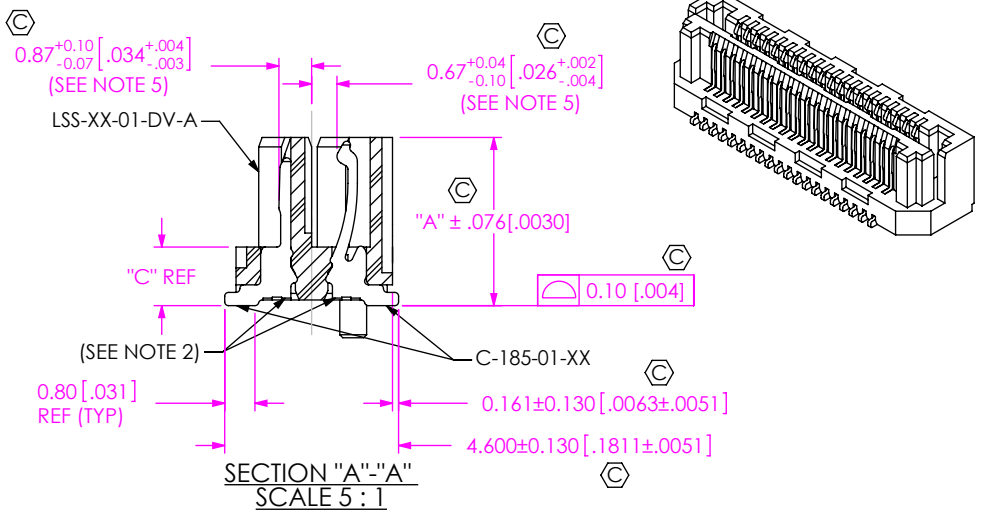
FIG 1
LSS-120-01-XX-DV-A SHOWN

LSS LEAD STYLE	-01	-02	-03
-01	6.0MM		
-02	9.0MM	12.0MM	
-03	7.0MM	10.0MM	8.0MM

NOTES:

- ⊗ REPRESENTS A CRITICAL DIMENSION.
- BREAKOFF BURR ALLOWANCE .054 [.0021].
- MINIMUM PUSHOUT FORCE; TERMINALS: .5 LBS. CONTACTS: .5 LB.
- PIN 01 WILL MATE WITH CONTACT 02 ON MATING CONNECTOR.
- MEASURE FROM TOP OF VERTICAL WALL.
- MINIMUM PULL OUT FORCE FOR -LC IS .75 LB.
- FOR APPLICATIONS REQUIRING TWO OR MORE CONNECTORS PER BOARD, CONTACT IPG@SAMTEC.COM.
- NOTE DELETED.
- NOTE DELETED.
- TRAYS ARE STANDARD PACKAGING.
- ORDERS WILL BE PACKAGED ACCORDING TO THE SAMTEC PACKAGING EFFICIENCY STANDARDS (SPES) FOUND ON WWW.SAMTEC.COM.
- ATTACH LABEL -4X2 TO EACH REEL.

- LSS-1XX-XX-XX-DV-XX-XX-XX**
- NO OF POSITIONS**
-05, -10, 20, -30, -40, -50 (PER ROW)
 - LEAD STYLE**
-01: 3 mm (SEE TABLE 3)
-02: 6 mm (SEE TABLE 3)
-03: 4 mm (SEE TABLE 3)
 - PLATING SPECIFICATION**
-L: 10μ" AU IN CONTACT AREA, MATTE TIN ON TAIL (USE C-185-XX-LM)
-F: 3μ" AU IN CONTACT AREA, MATTE TIN ON TAIL (USE C-185-XX-FM)
-H: 30μ" AU IN THE CONTACT AREA, 3μ" AU ON TAIL (USE C-185-XX-H)
*LM: 10μ" AU IN CONTACT AREA, MATTE TIN ON TAIL (USE C-185-XX-LM)
*FM: 3μ" AU IN CONTACT AREA, MATTE TIN ON TAIL (USE C-185-XX-FM)
*** = FOR EXISTING CUSTOMERS ONLY**
 - PACKAGING OPTION**
BLANK: TRAYS (SEE NOTE 10)
-TR: TAPE & REEL (SEE NOTES 11 & 12) (SEE FIG 4, SHT 2)
-FR: FULL REEL QTY. TAPE & REEL (SEE NOTES 11 & 12)
 - PICK & PLACE OPTION**
-K: POLYIMIDE FILM (USE K-DOT-.138-.250-.005) (SEE FIG 2, SHT 2)
 - OPTION**
-A: ALIGNMENT PIN (REQUIRED FOR -01 LEAD STYLE; OPTIONAL FOR -02 & -03)
-LC: LOCKING CLIP (-02 & -03 LEAD STYLES ONLY) (USE LC-08-TM-01) (SEE FIG 3, SHT 2) (SEE NOTE 6)
 - ROW SPECIFICATION**
-DV: DOUBLE VERTICAL



BODY HT	"A"	"B"	"C"
-01	4.450 [1.752]	4.300 [1.693]	1.596 [0.628]
-02	7.450 [2.933]	7.300 [2.874]	4.593 [1.808]
-03	5.450 [2.146]	5.300 [2.087]	2.593 [1.021]

LEADSTYLE	BODY	PIN
-01	LSS-XX-01-DV-A	C-185-01-X
-02	LSS-XX-02-DV-XX	C-185-02-X
-03	LSS-XX-03-DV-XX	C-185-03-X

UNLESS OTHERWISE SPECIFIED, DIMENSIONS ARE IN MILLIMETERS.

TOLERANCES ARE:
DECIMALS ANGLES
.X: ± .3 [0.1]
.XX: ± .13 [0.05]
.XXX: ± .051 [0.020]

PROPRIETARY NOTE
THIS DOCUMENT CONTAINS CONFIDENTIAL AND PROPRIETARY INFORMATION AND ALL DESIGN, MANUFACTURING, REPRODUCTION, USE, PATENT RIGHTS AND SALES RIGHTS ARE EXPRESSLY RESERVED BY SAMTEC, INC. THIS DOCUMENT SHALL NOT BE DISCLOSED, IN WHOLE OR PART, TO ANY UNAUTHORIZED PERSON OR ENTITY NOR REPRODUCED, TRANSFERRED OR INCORPORATED IN ANY OTHER PROJECT IN ANY MANNER WITHOUT THE EXPRESS WRITTEN CONSENT OF SAMTEC, INC.

MATERIAL: DO NOT SCALE DRAWING SHEET SCALE: 4:1
INSULATOR: LCP, COLOR: BLACK
CONTACT: PHOS BRONZE

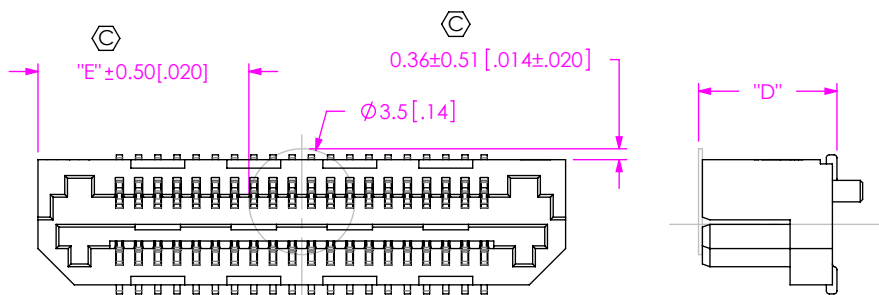
DESCRIPTION: .635mm TERMINAL/SOCKET COMBO

DWG. NO.
LSS-1XX-XX-XX-DV-XX-XX-XX

BY: CHAD F 07/01/2002 SHEET 1 OF 2

520 PARK EAST BLVD, NEW ALBANY, IN 47150
PHONE: 812-944-6733 FAX: 812-948-5047
e-Mail info@SAMTEC.com code 55322

FIG 2
-K: POLYIMIDE FILM OPTION
(USE K-DOT-.138-.250-.005)



"E" = ((NO OF POS X 0.635 [.0250]) + 4.750 [.1870]) / 2 - 1.75 [.0689]

TABLE 2	
BODY HT	"D"
-01	4.58 [.180]
-02	7.58 [.298]
-03	5.58 [.220]

FIG 3
-LC: LOCKING CLIP OPTION
(USE LC-08-TM-01)
-02 & -03 LEAD STYLES ONLY
(SEE NOTE 6, SHT. 1)

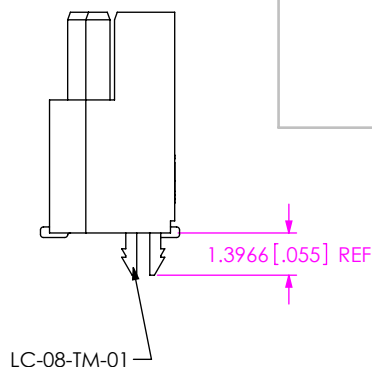
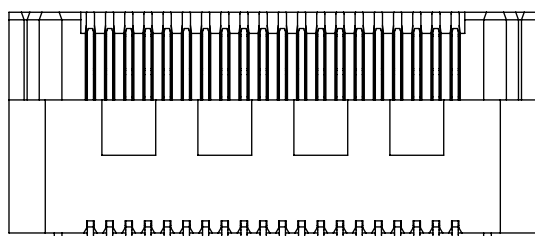
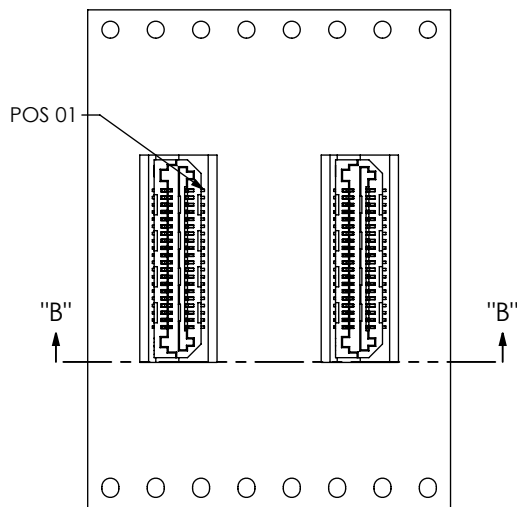
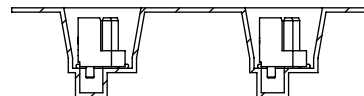


FIG 4



USER DIRECTION OF UN-REELING
POCKET NOT DETAILED



SECTION "B"- "B"
SCALE 1.5 : 1

TAPE & REEL

PROPRIETARY NOTE

THIS DOCUMENT CONTAINS CONFIDENTIAL AND PROPRIETARY INFORMATION AND ALL DESIGN, MANUFACTURING, REPRODUCTION, USE, PATENT RIGHTS AND SALES RIGHTS ARE EXPRESSLY RESERVED BY SAMTEC, INC. THIS DOCUMENT SHALL NOT BE DISCLOSED, IN WHOLE OR PART, TO ANY UNAUTHORIZED PERSON OR ENTITY NOR REPRODUCED, TRANSFERRED OR INCORPORATED IN ANY OTHER PROJECT IN ANY MANNER WITHOUT THE EXPRESS WRITTEN CONSENT OF SAMTEC, INC.

DO NOT SCALE DRAWING

SHEET SCALE: 4:1



520 PARK EAST BLVD, NEW ALBANY, IN 47150
PHONE: 812-944-6733 FAX: 812-948-5047
e-Mail info@SAMTEC.com code 55322

DESCRIPTION:
.635mm TERMINAL/SOCKET COMBO

DWG. NO.
LSS-1XX-XX-XX-DV-XX-XX-XX

BY: CHAD F 07/01/2002 SHEET 2 OF 2