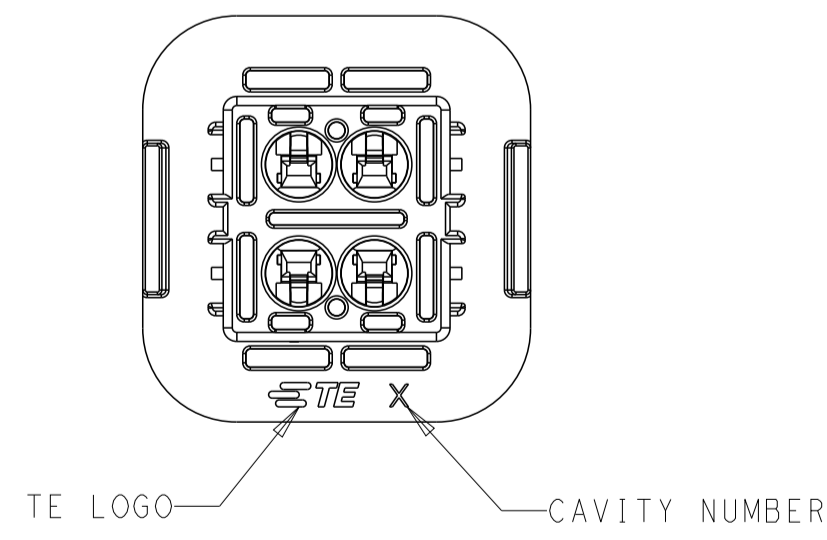
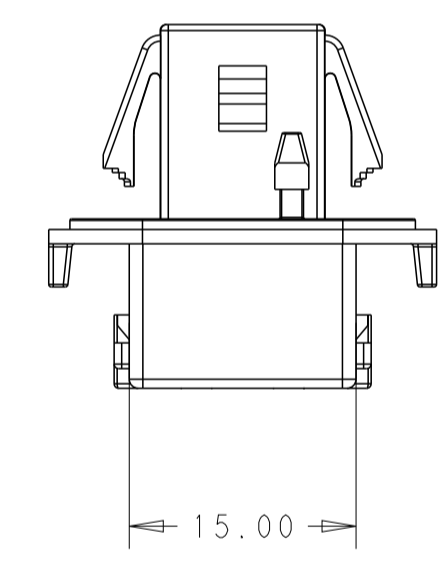
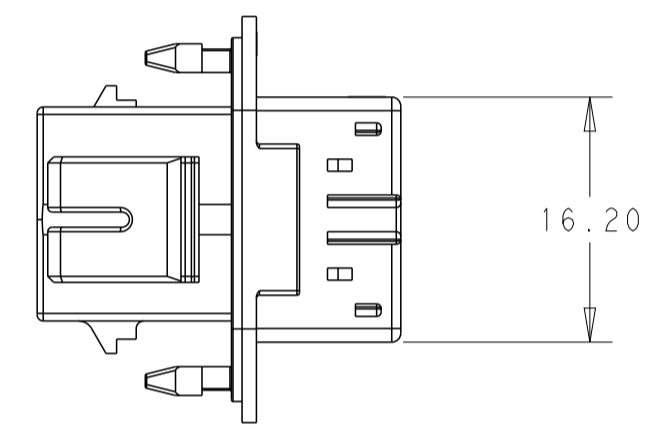
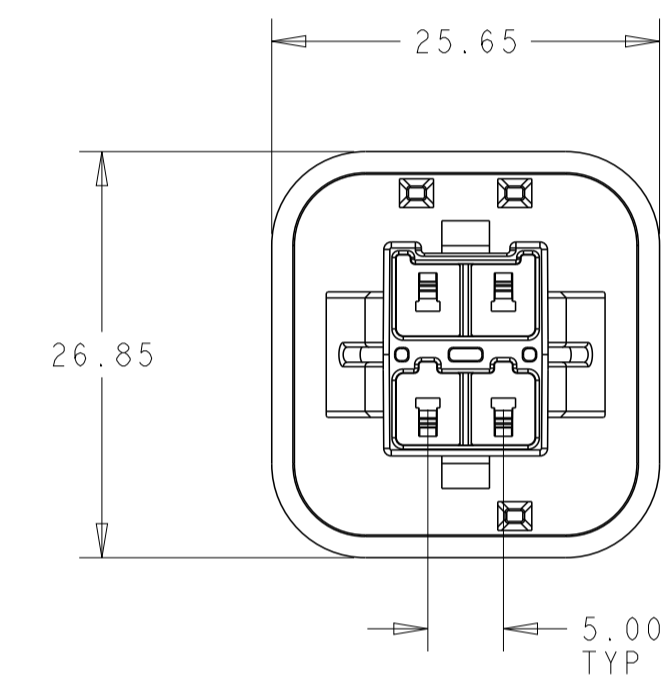
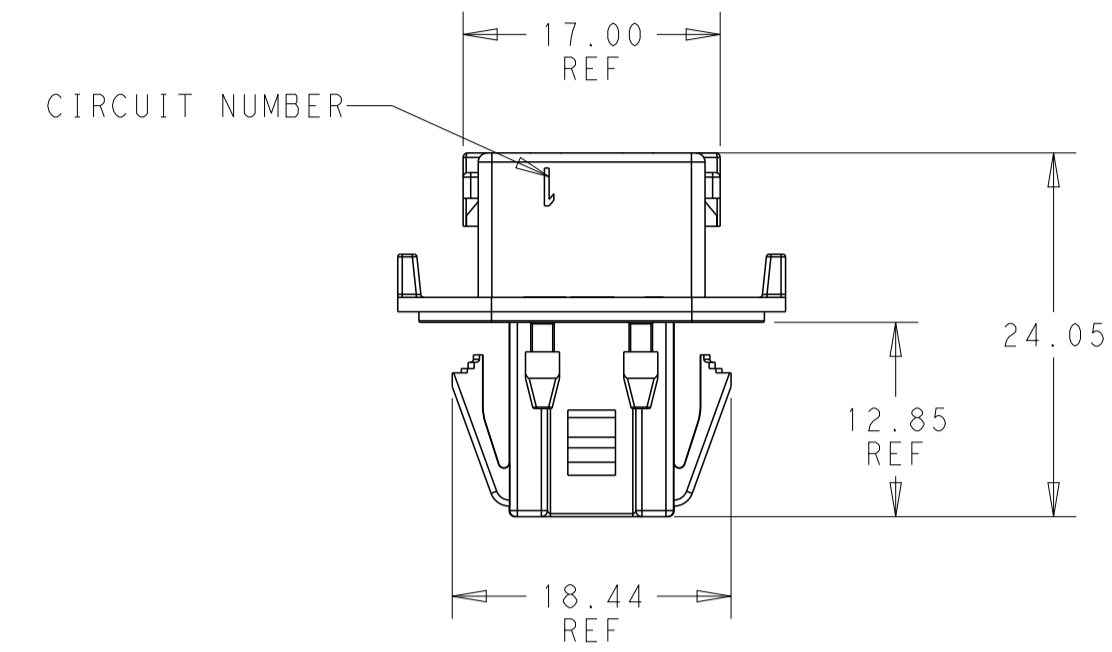
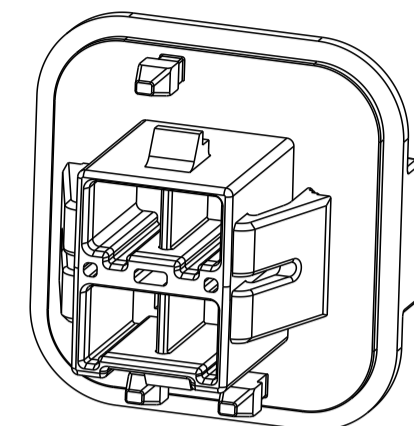
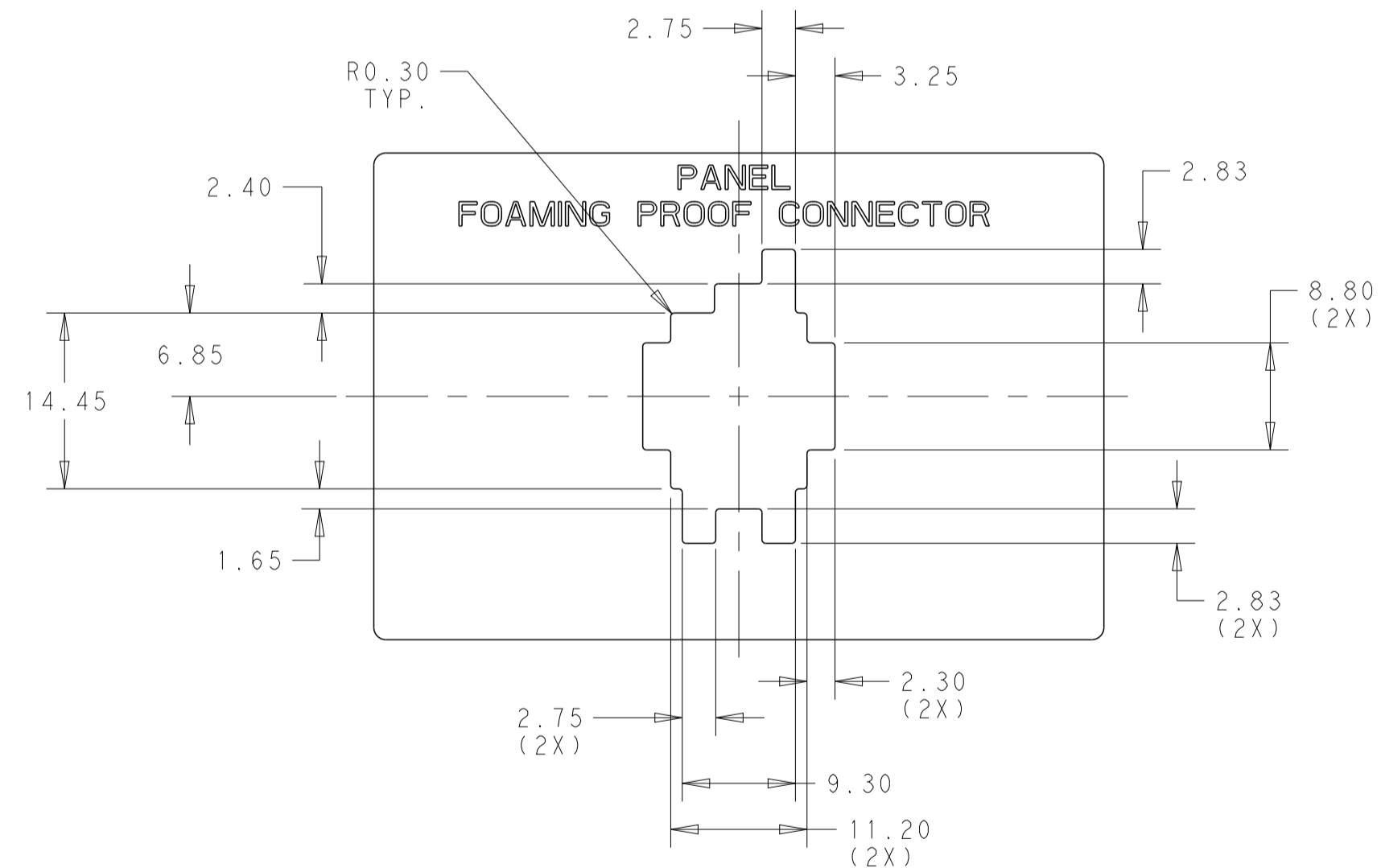


REVISIONS				
P	LTN	DESCRIPTION	DATE	APVD
A		REVISE PER ECN-25-300958	13JAN2025	D, K O, C



- △ MATERIAL: THERMOPLASTIC, UL94V-0, COLOR: NATURAL
- 2. THIS HOUSING ACCEPTS UNSEALED TERMINAL: 2391524-1, 2391525-1, SEALED TERMINAL: 2406088-1, 2406089-1
- 3. RECOMMENDED MATING PART:
 PLUG HSG: 2391516-2, 1-2391516-2
 TPA: 1-2391522-2
- 4. PER IEC 60335-1 SECT. 30. GWEPT 750C, NO FLAME or Te-Ti<=2S
- 5. RECOMMENDED PANEL THICKNESS: 1.0



RECOMMENDED PANEL CUT-OUT TOLERANCE ±0.10

4P(2+2)	2391517-1
POSITIONS	PART NUMBER

THIS DRAWING IS A CONTROLLED DOCUMENT.		DWN: OTTO_CHEN 18OCT2022	TE Connectivity
DIMENSIONS: mm		CHK: DANIEL_ZHANG 20OCT2022	
TOLERANCES UNLESS OTHERWISE SPECIFIED:		APVD: DANIEL_ZHANG 20OCT2022	NAME: CAP HOUSING, MULTI 4P, GLOW WIRE, POWER DOUBLE LOCK PRODUCT SPEC: 108-160365 APPLICATION SPEC: 114-160194
0 PLC ± 1 PLC ±0.30 2 PLC ± 3 PLC ± 4 PLC ± ANGLES ± FINISH -		SIZE: 114-160194 WEIGHT: - CUSTOMER DRAWING	
MATERIAL: △		SCALE: 2:1	RESTRICTED TO: A
		SHEET: 1 OF 1	REV: A