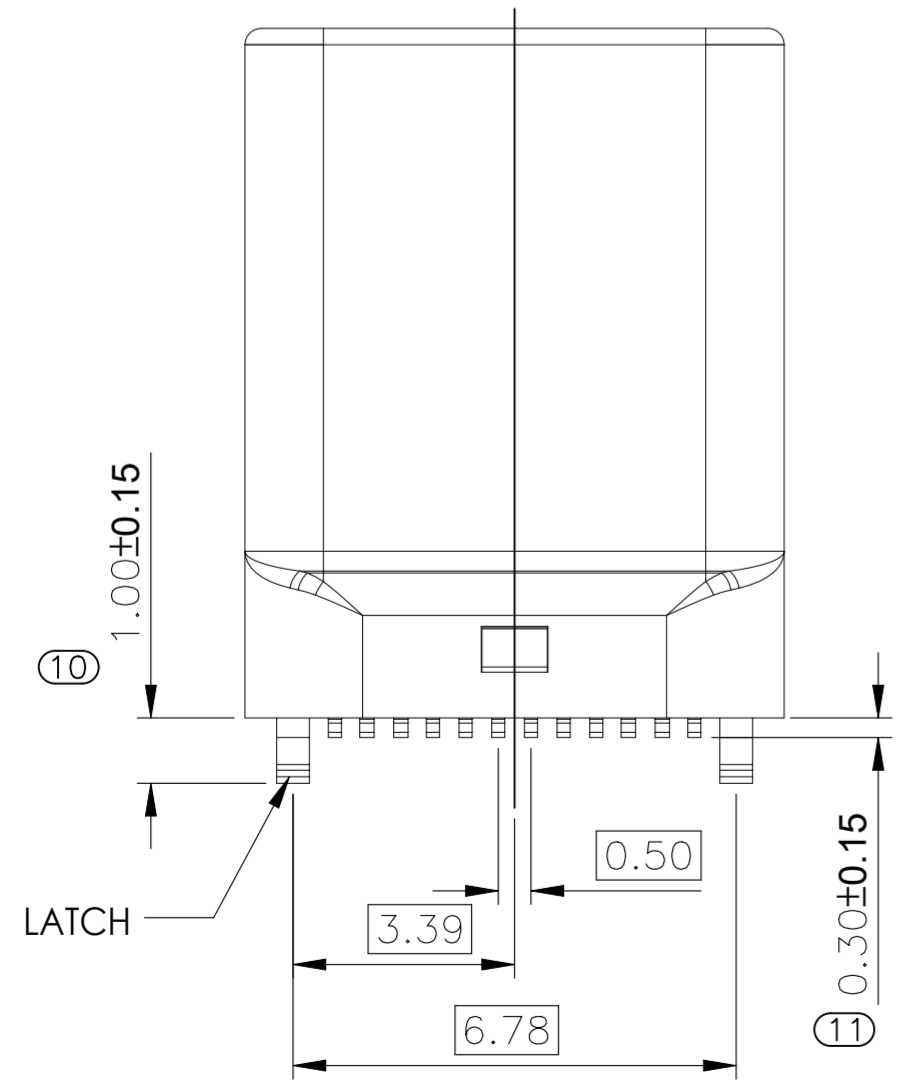
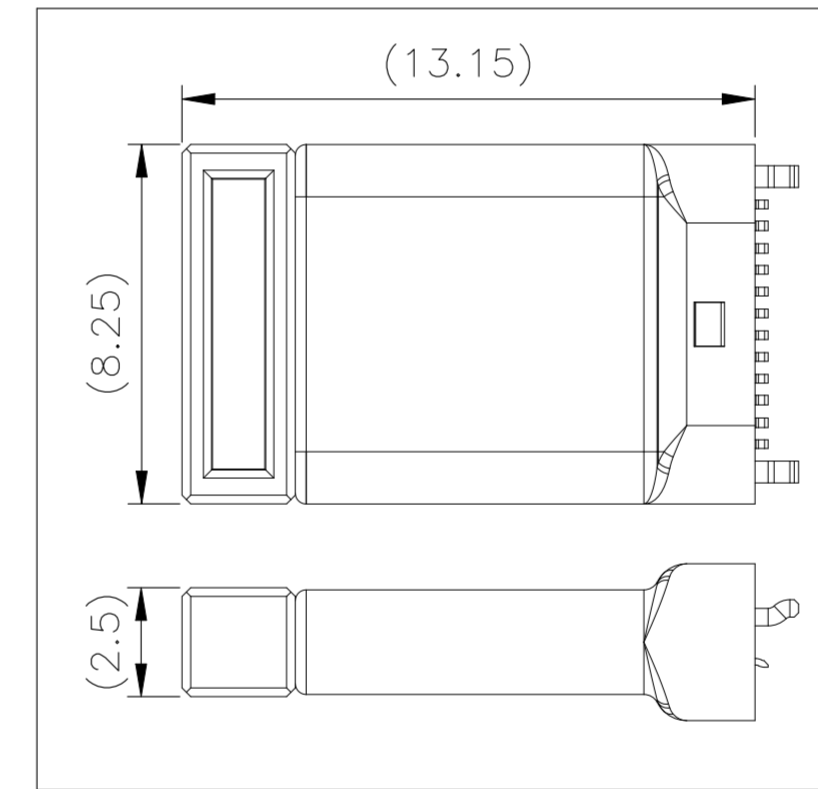
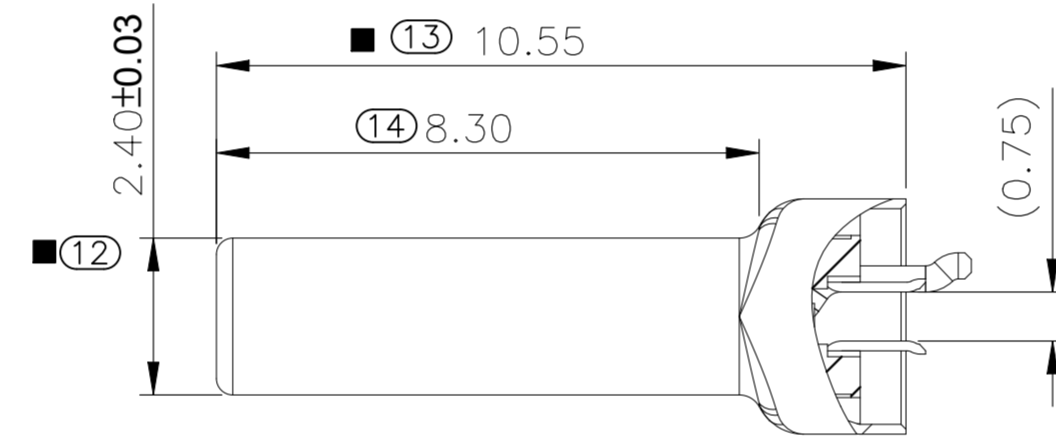
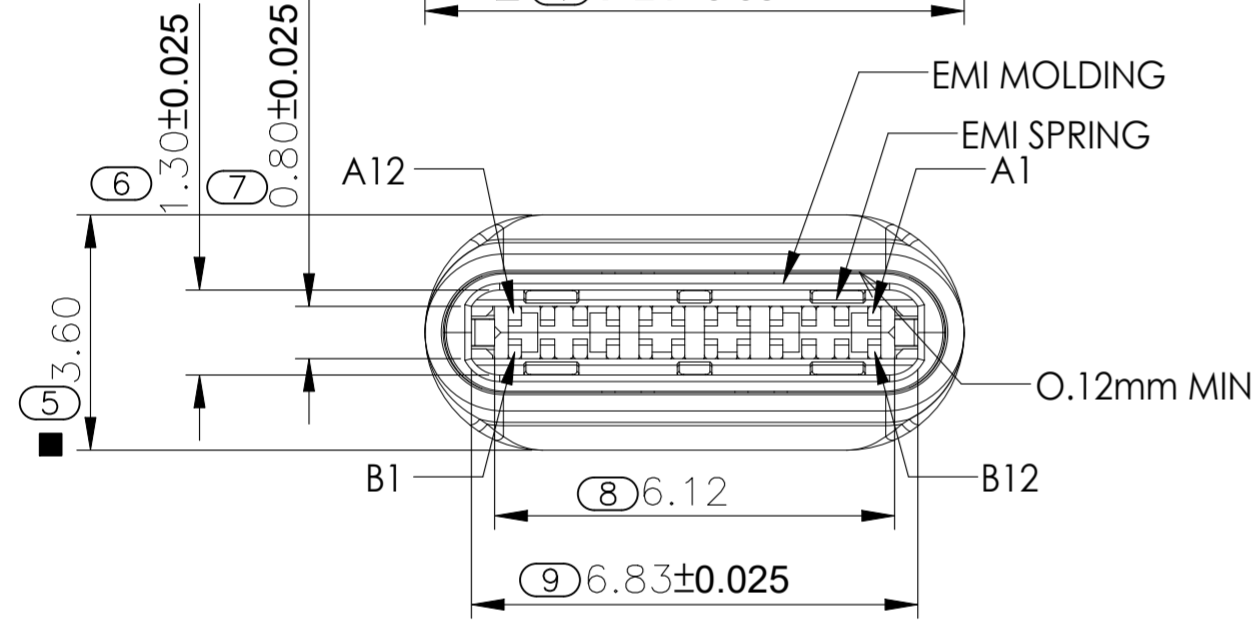
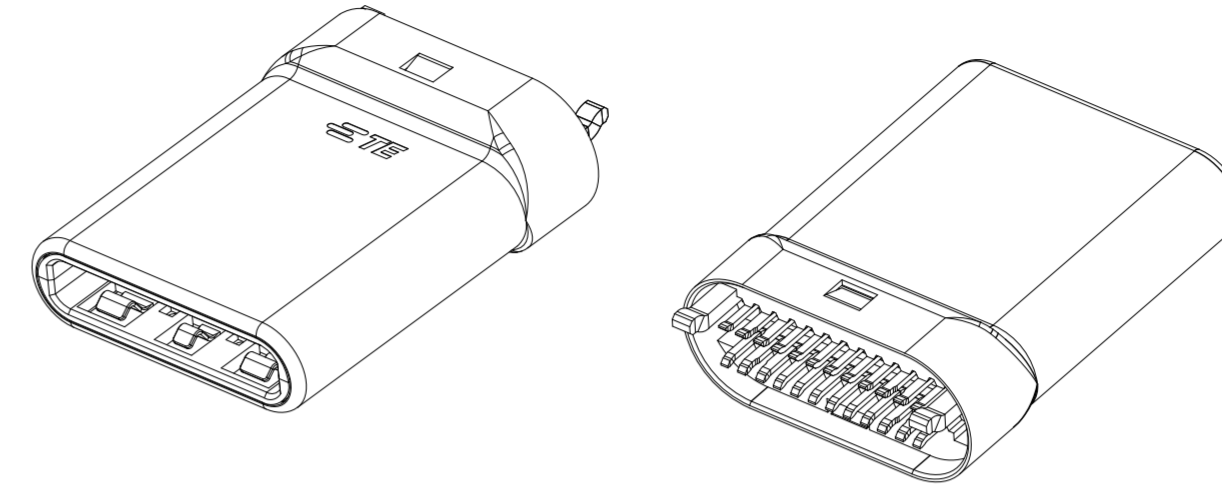
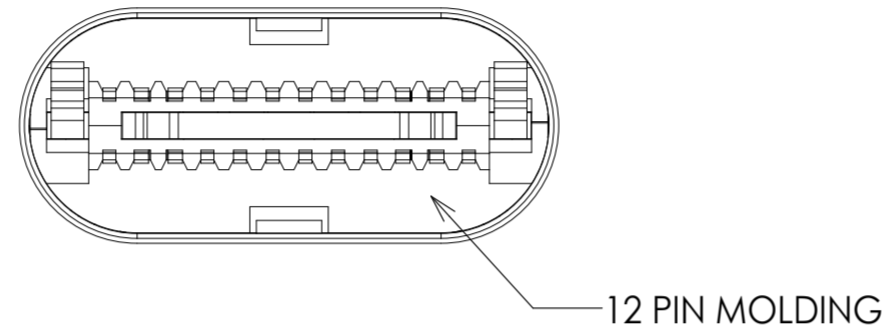
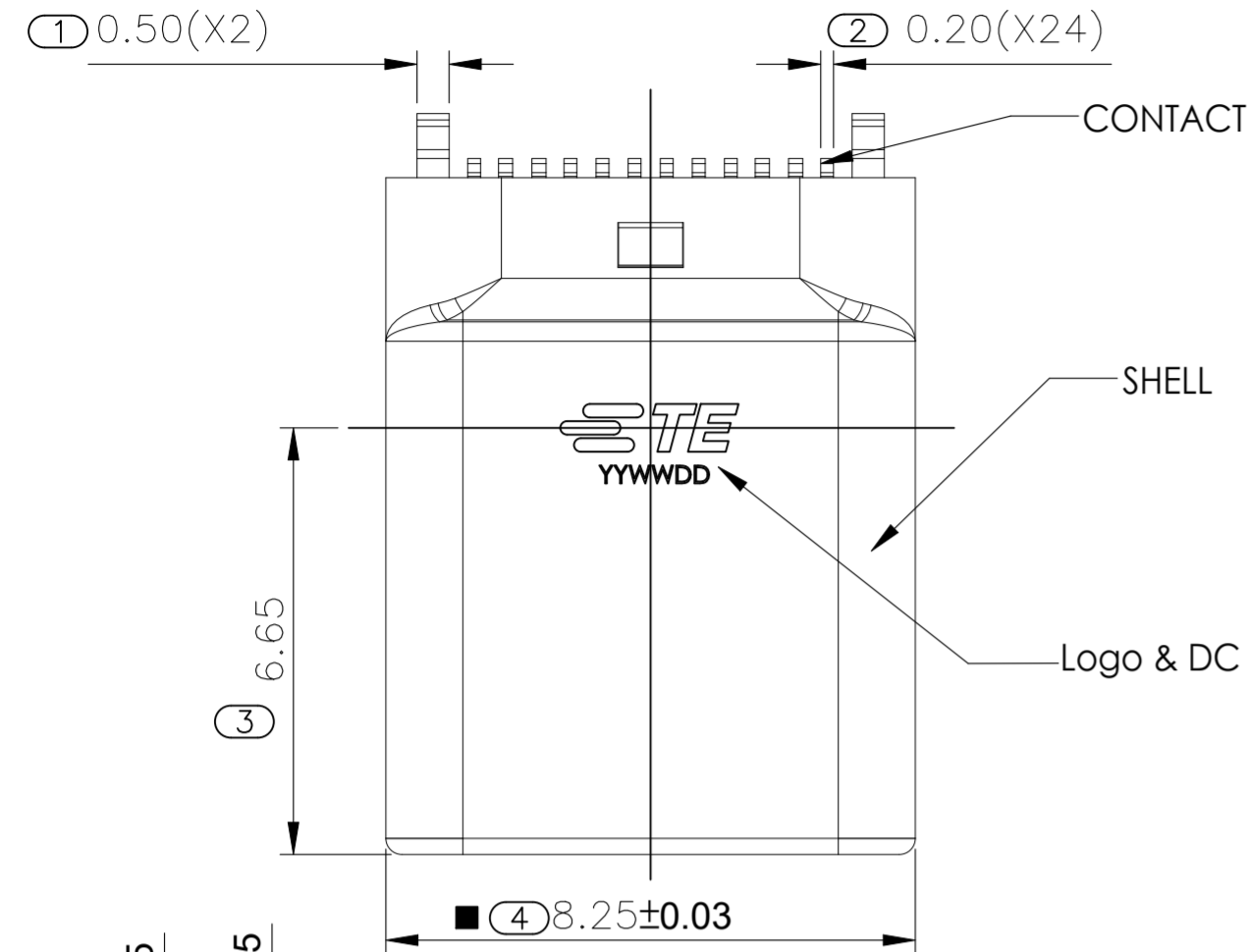


REVISIONS					
P	LTR	DESCRIPTION	DATE	DWN	APVD
A	RELEASED PER	ECN-25-303390	23JAN2025	NS	RCG



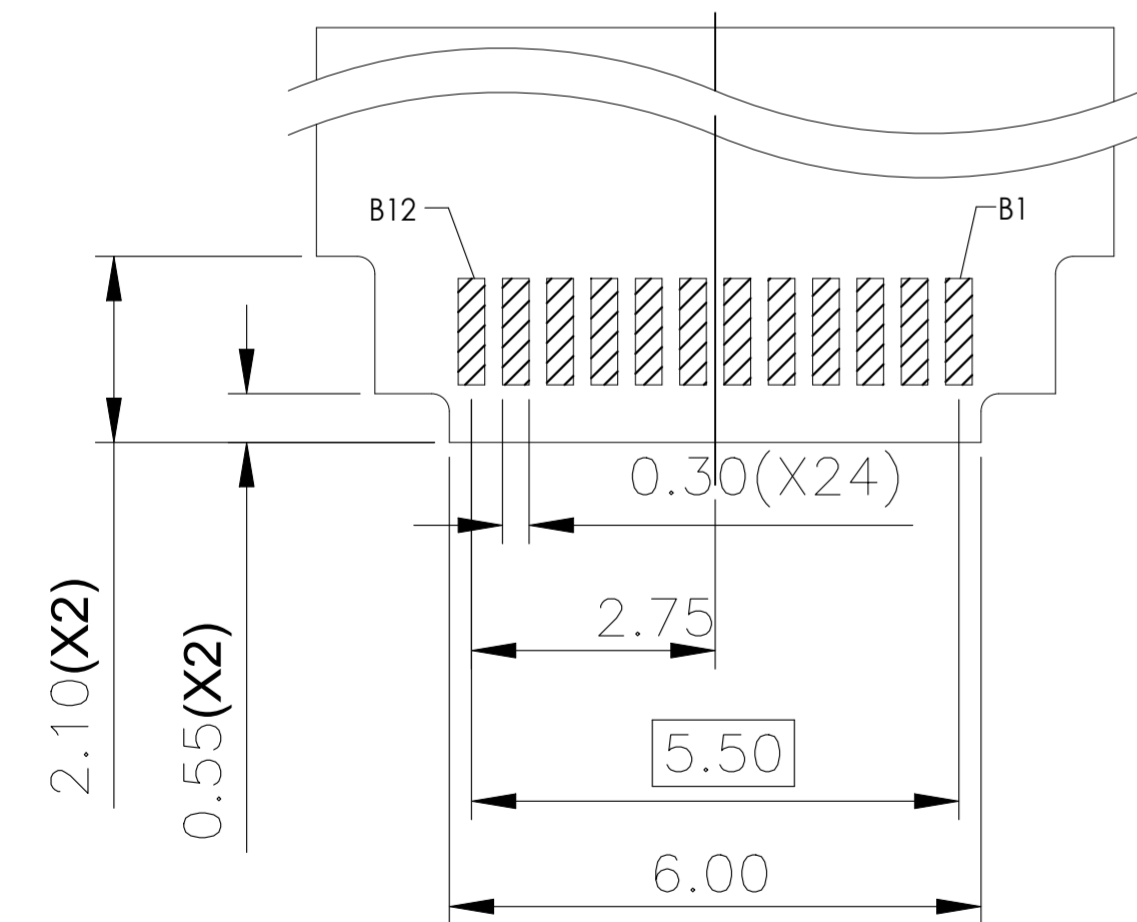
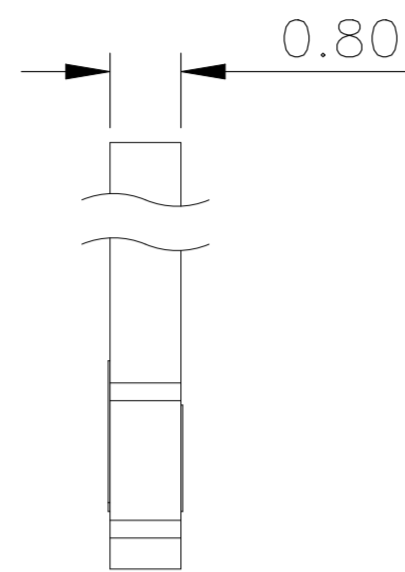
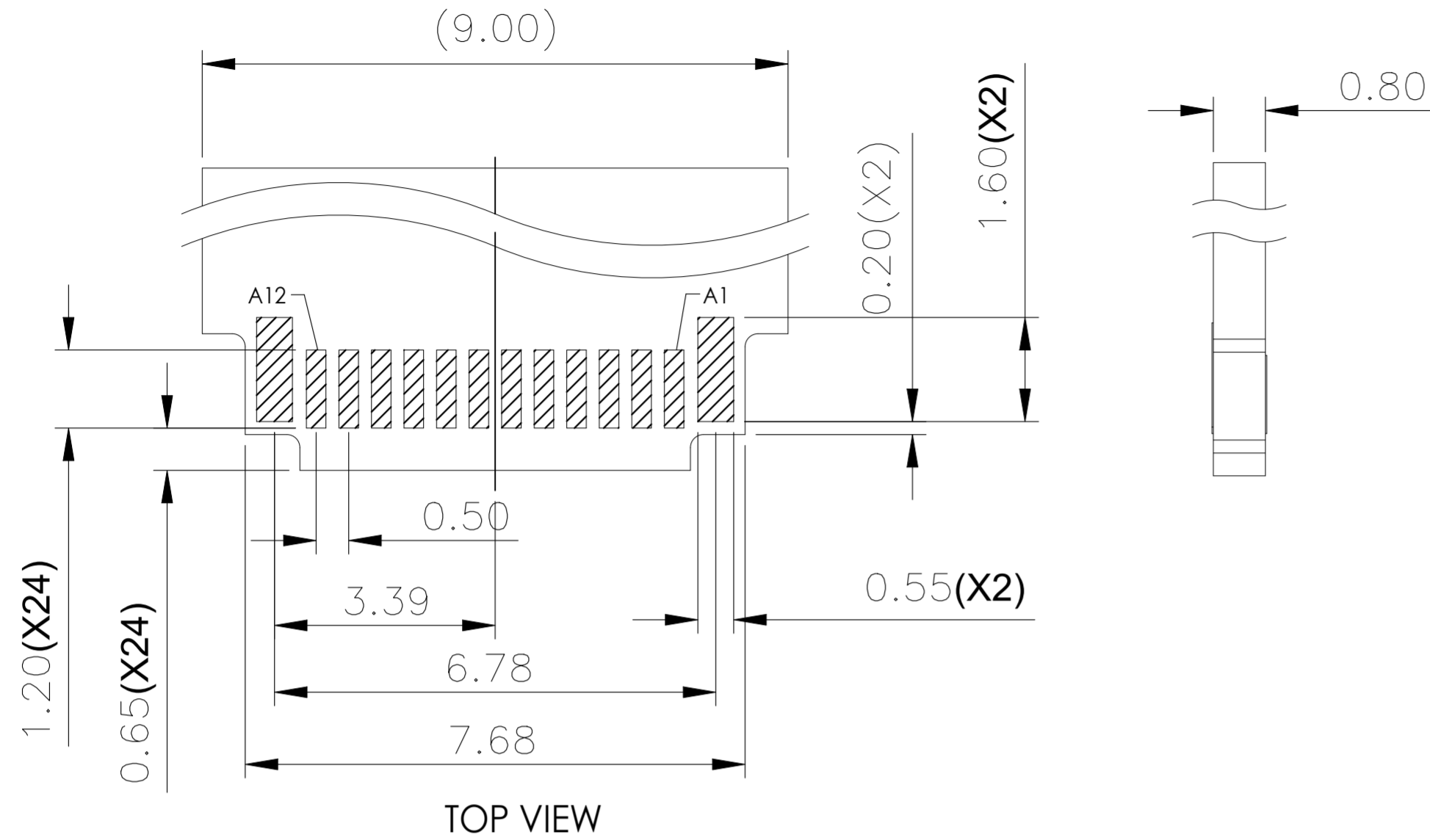
PIN ASSIGNMENT												
PIN NO	A12	A11	A10	A9	A8	A7	A6	A5	A4	A3	A2	A1
SIGNAL NAME	GND	RX2+	RX2-	VBUS	SBU1	D-	D+	CC	VBUS	TX1-	TX1+	GND
PIN NO	B1	B2	B3	B4	B5	B6	B7	B8	B9	B10	B11	B12
SIGNAL NAME	GND	TX2+	TX2-	VBUS	VCONN	D+	D-	SBU2	VBUS	RX1-	RX1+	GND

THIS DRAWING IS A CONTROLLED DOCUMENT.

DWN	08JAN2025	NAIR, SREEKUMAR	TE Connectivity	USB 4.0 TYPE-C PLUG		
CHK	08JAN2025	GIRIDHAR, VA		NAME	-	
APVD	08JAN2025	RAGHAVAN, CG	NAME	-		
PRODUCT SPEC	114-161703		SIZE	CAGE CODE	DRAWING NO	RESTRICTED TO
APPLICATION SPEC	108-161270		A2	00779	C=2495137	-
MATERIAL	-		WEIGHT	-		SCALE
FINISH	-		CUSTOMER DRAWING		1:1	SHEET
					1 of 2	REV
						A

2495137

REVISIONS					
P	LTR	DESCRIPTION	DATE	DWN	APVD
-	-	SEE SHEET 1	-	-	-



BOTTOM VIEW
RECOMMEND PCB LAYOUT
TOLERANCE =±0.05

NOTES :

PRODUCT MUST MEET CONTROLLED SUBSTANCES PER TE SPEC 230-702, REVISION E.

1. MATERIAL :
 - 1.1 HOUSING 1: PA46 WITH 30% G.F, UL94 V-0; COLOR: BLACK
 - 1.2 HOUSING 2: LCP WITH 30% G.F, UL94 V-0; COLOR: BLACK
 - 1.3 CAP: LCP WITH 30% G.F, UL94 V-0; COLOR: BLACK
 - 1.4 CONTACTS: PHOSPHOR BRONZE, C7025 TM03, T=0.15±0.015
 - 1.5 SHELL: STAINLESS STEEL,SUS316L,T=0.15
 - 1.6 LATCH: STAINLESS STEEL,SUS301H,T=0.4±0.015
 - 1.7 EMI SPRING: STAINLESS STEEL,SUS301H,T=0.1±0.015
2. FINISH : (MATTE-TIN PER TE SPEC 112-65-1, BRIGHT-TIN PER TE SPEC 112-65-2)
 - 2.1 CONTACT
 - 0.75um [30u"] MIN GOLD PLATING ON CONTACT AREA.
 - 0.02um [0.8u"] MIN. GOLD PALTING ON SOLDER TAIL AREA.
 - 1.27um [50u"] MIN. NICKEL UNDERPLATING OVERALL.
3. "⊗" SHOWS Cpk MEASUREMENT ITEMS. (0 PLACES)
4. "⊙" SHOWS FAI MEASUREMENT ITEMS. (23 PLACES)
5. "■" SHOWS QIP INSPECTION ITEMS. (4 PLACES)
6. "POM#" INDICATE THE MEASUREMENT POINT OF PLATING. (? PLACES)
7. NET WEIGHT: 0.505 g WITH CAP, X.X gf WITHOUT CAP.
8. CONTACT RETENTION FORCE: X.X gf/PIN.
9. HOUSING CAVITY: 1 CAVITIES.
10. INSPECTION GAUGE: ??
11. DATE CODE : YYWWDD(YY: YEAR, WW: WEEK,)

THIS DRAWING IS A CONTROLLED DOCUMENT.		DWN NAIR, SREEKUMAR 08JAN2025		
DIMENSIONS: mm		CHK GIRIDHAR, VA 08JAN2025		
TOLERANCES UNLESS OTHERWISE SPECIFIED:		APVD RAGHAVAN, CG 08JAN2025	NAME USB 4.0 TYPE-C PLUG	
0 PLC ± 0.38 1 PLC ± 0.25 2 PLC ± 0.15 3 PLC ± 0.10 4 PLC ± - ANGLES ± 3°		PRODUCT SPEC 114-161703	RESTRICTED TO	
MATERIAL		APPLICATION SPEC 108-161270	SIZE A2	CAGE CODE 00779
FINISH		WEIGHT -	DRAWING NO C=2495137	SCALE 1:1
		CUSTOMER DRAWING	SHEET 2 OF 2	REV A

2495137