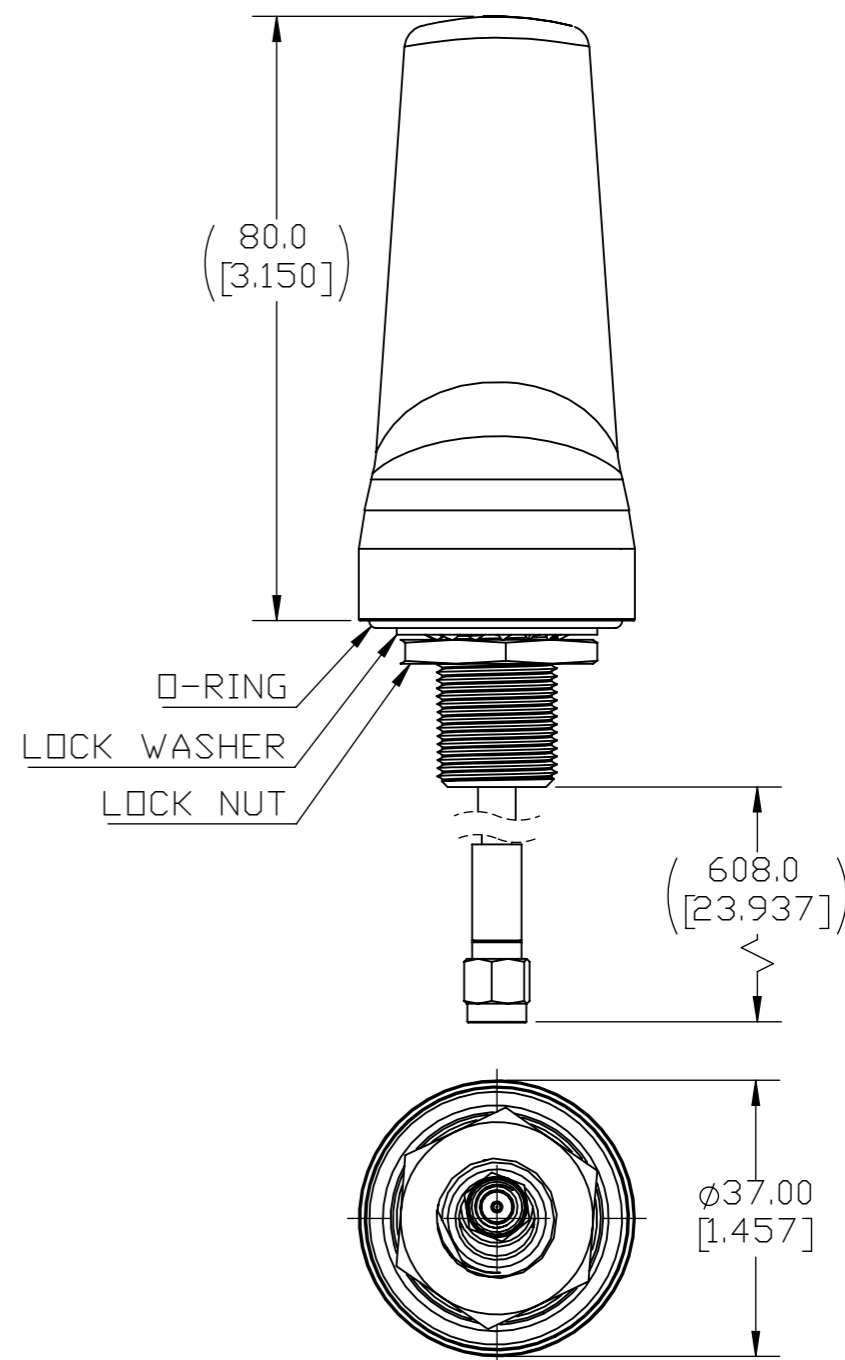


REVISIONS

- NOTE:
1. THIS PARAMETERS GROUND DEPENDENT AND SHOULD SERVE AS REFERENCE.
  2. ANTENNA SPECIFICATION IS SUBJECTED TO CHANGES ACCORDING TO THE GROUND PLANE.

REV	DESCRIPTION	DATE	DWN	APVD
F02	(ECD-18-00443) TABLE UPDATED	04APR19	TP CHEE	WT NG
F03	(ECD-18-00443) TABLE REARRANGE	09APR19	TP CHEE	WT NG
A1	CHANGE TO TE DRAWING FORMAT	03MAR25	KS	C.HANG

PARAMETER	SPECIFICATION							
MODEL NUMBER	HCF69273BN-60A							
FREQUENCY BANDS,MHZ	698-824	824-894	880-960	1690-1880	1850-1990	1910-2180	2300-2500	2500-2700
PEAK GAIN (*),DBI (AVERAGE)	1.0	1.2	1.0	2.8	3.1	3.3	3.3	3.4
PEAK GAIN (*),DBI (MAX)	1.5	1.2	1.2	3.3	3.4	3.6	3.5	3.8
VSWR (*),AVERAGE	< 1.8	< 1.8	< 2.1	< 1.4	< 1.6	< 1.5	< 1.3	< 1.6
VSWR (*),MAX	<2.6			<2.0				
GROUND PLANE	2FT X 2FT GP FOR VSWR							
	1FT DIAMETER GP FOR RADIATION PATTEM							
NOMINAL IMPEDANCE,OHM	50							
POLARIZATION	VERTICAL							
MAX INPUT POWER (AMBIENT 25°C/77°F),WATTS	10							
CABLE& LENGTH OF CABLE,mm	ULTRALINK 092463,608 (2FT)							
CONNECTOR	SMA MALE							
ANTENNA DIMENSION (HT X DIA),mm	80 X 37							
DC SHORT	NO							
WEIGHT,G	100.5							
ANTENNA COLOR	BLACK							
RADOME	PC,LEXAN EXL9330,UV RESISTANT,UL94 V-0							
OPERATING TEMPERATURE,°C	-30 ~ +70							
STORAGE TEMPERATURE,°C	-40 ~ +85							
INGRESSION PROTECTION	IP67							
INSTALLATION TORQUE,NM	4~6							
ROHS COMPLIANCE	YES							



THIS DRAWING IS A CONTROLLED DOCUMENT.

DWN TP CHEE 14 JAN 2019

CHK YJ TEOH 14 JAN 2019

APVD C.HANG 14 JAN 2019

PRODUCT SPEC REFER TABLE

APPLICATION SPEC

N/A

WEIGHT REFER TABLE

CUSTOMER DRAWING



M2M,HCF,LTE ULINK,SMA TOP LOADED MONOPLD

SIZE	CAGE CODE	DRAWING NO	RESTRICTED TO
------	-----------	------------	---------------

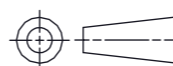
A3	00779	©=HCF69273BN-60A	
----	-------	------------------	--

SCALE 1:5	SHEET 1 OF 1	REV A1
-----------	--------------	--------

DIMENSIONS: mm[INCH]

TOLERANCES UNLESS OTHERWISE SPECIFIED:

- 0 PLC ± 0.5
- 1 PLC ± 0.25
- 2 PLC ± 0.130
- 3 PLC ±
- 4 PLC ±
- ANGLES ± 30'



MATERIAL N/A

FINISH N/A