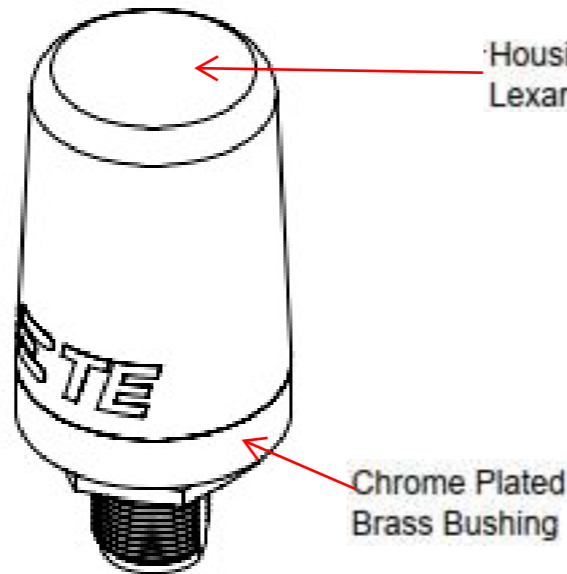
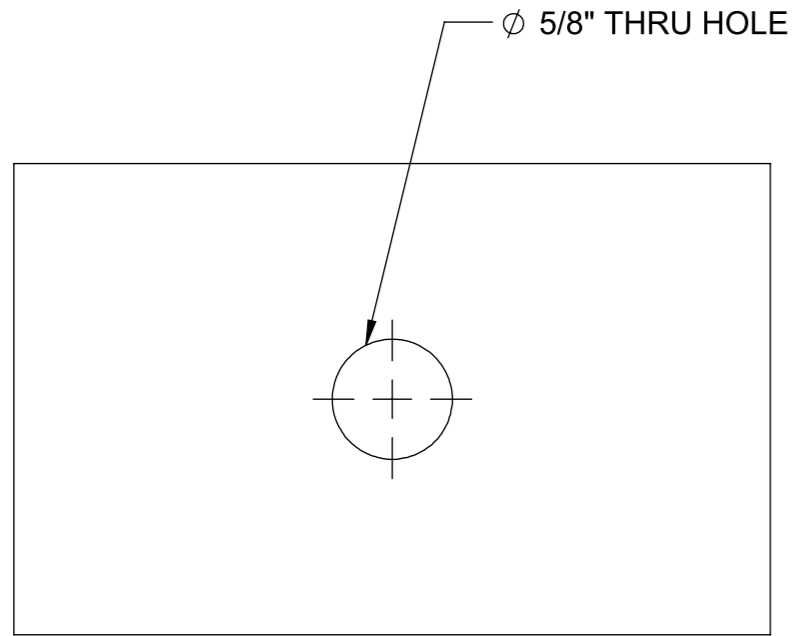
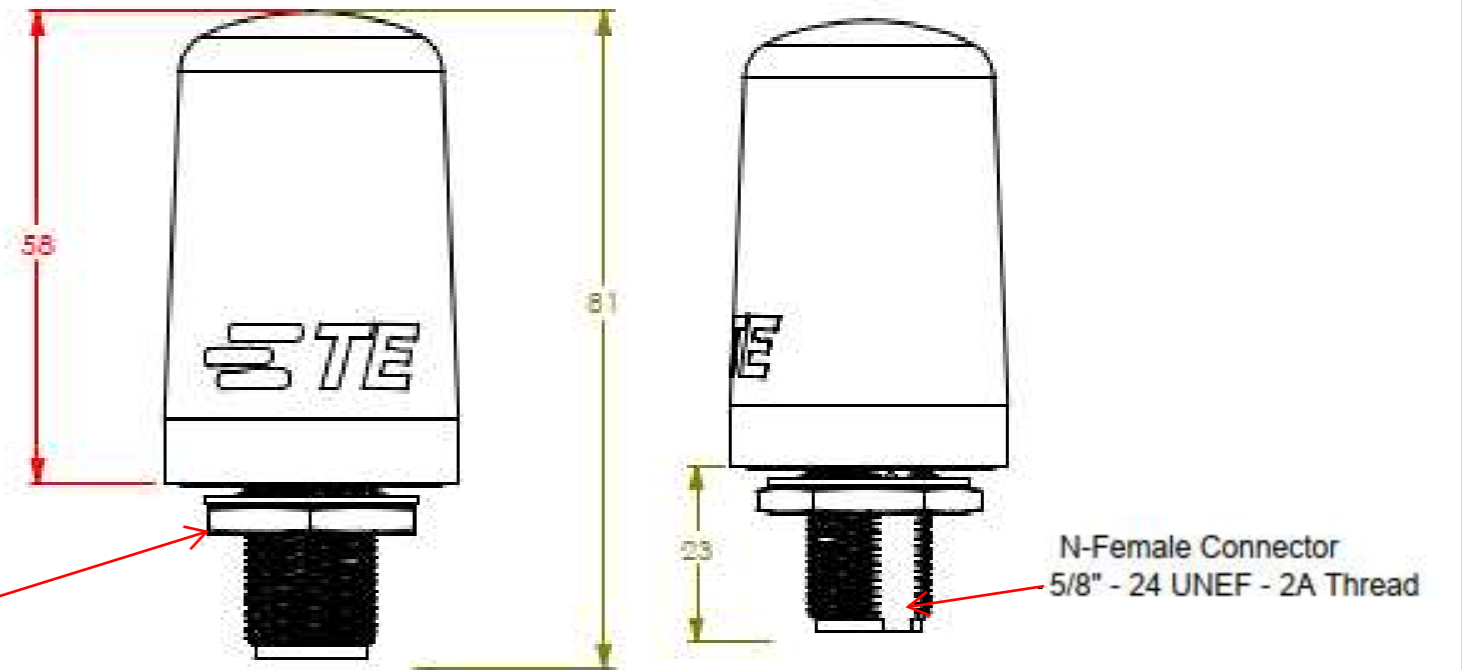
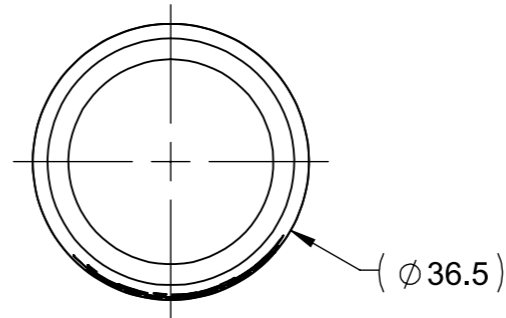


PARAMETER	PERFORMANCE	
MODEL NUMBER	TRAB9023P	TRA9023P
FREQUENCY	902-928 MHz	
GAIN (*)	3 dBI	
VSWR	<2 : 1	
INPUT IMPEDANCE	50 OHM	
POLARIZATION	VERTICAL	
RADOME COLOR	BLACK	WHITE
MAX INPUT POWER	100 WATTS	
RADIATION PATTERN	OMNIDIRECTIONAL	
MOUNTING	P-MOUNT	
WIND SURVIVOL	282 KM/H	
OPERATING TEMPERATURE	-45°C TO +85°C	
STORAGE TEMPERATURE	-50°C TO +85°C	
INSTALLATION TORQUE ON NUT	5.4NM TO 8.1 NM	

(*) NOTE: THIS PARAMETER IS DEVICE DEPENDANT AND SHOULD SERVE AS REFERENCE

REVISIONS				
REV	DESCRIPTION	DATE	DWN	APVD
F01	(ECO-21-00716) INITIAL RELEASE	14DEC21	TP	WT
A1	CHANGE TO TE DRAWING FORMAT	28APR25	PK	C HANG



RECOMMENDED MOUNTING CONDITIONS:
 METALLIC SURFACE SHOULD BE FLAT AND CLEAN AS POSSIBLE
 HOLE SHOULD BE CENTERED AS MUCH AS POSSIBLE
 MAXIMUM THICKNESS : 22MM

MATERIAL:		THIRD ANGLE PROJECTION			
FINISH:		DO NOT SCALE DRAWING			
APPROVALS		DATE		TITLE: TRAB9023P/ TRA9023P MOUNTING & OUTLINE	
DRAWN BY	TP	14DEC21			
ELEC. ENG.	TY	14DEC21			
MECH. ENG.	WT	14DEC21			
MFG./OPS.	GL	14DEC21		SIZE A3	
INTERPRET DIMENSIONING AND TOLERANCING IN ACCORDANCE WITH ASME Y14.5M-2009 TOLERANCES UNLESS OTHERWISE SPECIFIED DIMENSIONS ARE IN MILLIMETERS		ANGLE: ±30' 0 PLACE DECIMAL: ±0.5 1 PLACE DECIMAL: ±0.25 2 PLACE DECIMAL: ±0.13 SURFACE ROUGHNESS 1.6/√		DWG. NO. C-TRAB9023P	
THIS DRAWING IS UNPUBLISHED. © Copyright 2025 TE Connectivity Ltd.		RELEASED FOR PUBLICATION ALL RIGHTS RESERVED		REV A1	
SCALE: 1:1		PREVIOUS#		SHEET 1 OF 1	