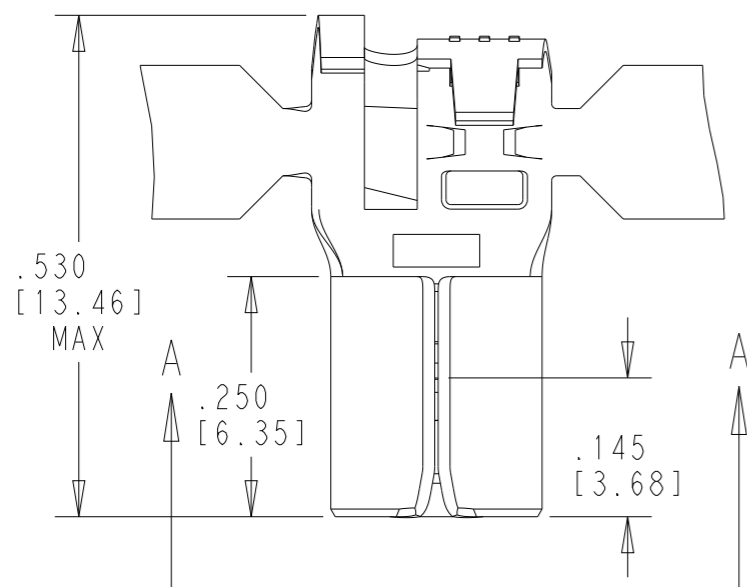


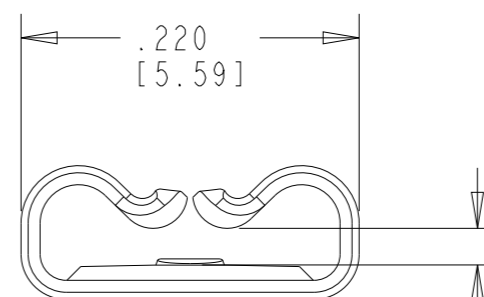
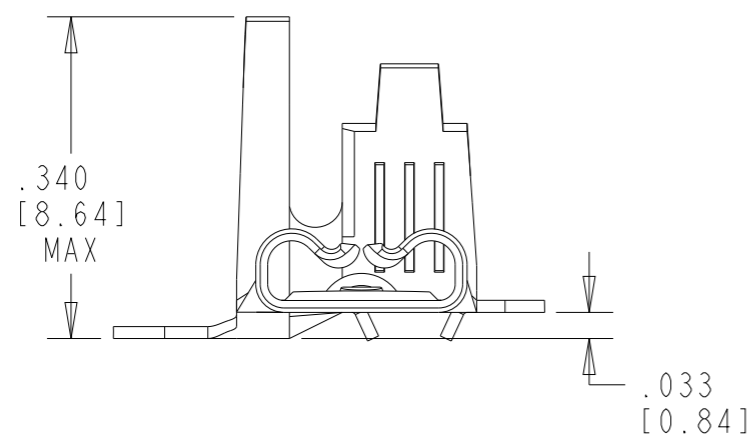
P	LTR	DESCRIPTION	DATE	DWN	APVD
	A5	REVISED PER ECR-18-004893	02MAY2018	BDA	DH
	A6	REVISED PER ECR-20-009164	10JUL2020	MK	DH
	A7	REVISED PER ECN-25-326760	12JUN2025	TDB	DH



- CONTINUOUS STRIP ON REELS
- WIRE SIZE RANGE: (SINGLE WIRE) 20-16AWG OR (TWO WIRE) (2)20 AWG ("TAB-LOK" CRIMP)
INSULATION DIAMETER RANGE: .110-.210 MAX ("O" CRIMP)
- MATING TAB THICKNESS IS .030-.033
- REELING ORIENTATION ACCORDING TO TE SPECIFICATION 107-3, FIG 243

△5 THIS PART IS UL APPROVED FOR 20-16AWG

△6 SUPERSEDED BY 2238200-3



GAP AS REQUIRED TO MEET FORCE SPECIFICATIONS AND .028 MAX

SECTION A-A
SCALE 8:1

△6	TIN	BRASS	2238041-3
△5	NICKEL	T2 STEEL	2238041-1
	FINISH	MATERIAL	PART NUMBER

THIS DRAWING IS A CONTROLLED DOCUMENT.		DWN T. BLAIR 18JUNE2024														
DIMENSIONS: IN		CHK B. WEAVER 18JUNE2024														
TOLERANCES UNLESS OTHERWISE SPECIFIED:		APVD W. MOYER 18JUNE2024	NAME 187 SERIES FLAG, FASTON STANDARD RECEPTACLE													
<table border="0"> <tr> <td>0 PLC</td> <td>±-</td> </tr> <tr> <td>1 PLC</td> <td>±-</td> </tr> <tr> <td>2 PLC</td> <td>±.015[0.38]</td> </tr> <tr> <td>3 PLC</td> <td>±-</td> </tr> <tr> <td>4 PLC</td> <td>±-</td> </tr> <tr> <td>ANGLES</td> <td>±5°</td> </tr> </table>		0 PLC	±-	1 PLC	±-	2 PLC	±.015[0.38]	3 PLC	±-	4 PLC	±-	ANGLES	±5°	PRODUCT SPEC -	RESTRICTED TO -	
0 PLC	±-															
1 PLC	±-															
2 PLC	±.015[0.38]															
3 PLC	±-															
4 PLC	±-															
ANGLES	±5°															
MATERIAL SEE TABLE		APPLICATION SPEC 114-2078	SIZE A3	CAGE CODE 00779	DRAWING NO C-2238041-C											
FINISH SEE TABLE		WEIGHT -	SCALE 5:1		SHEET 1 OF 1											
CUSTOMER DRAWING			REV A7													