

| P | LTR | DESCRIPTION | DATE | DWN | APVD |
|---|-----|--------------------------|-----------|-----|------|
| | A1 | REVISE PER ECN-25-329991 | 01JUL2025 | ED | WZ |

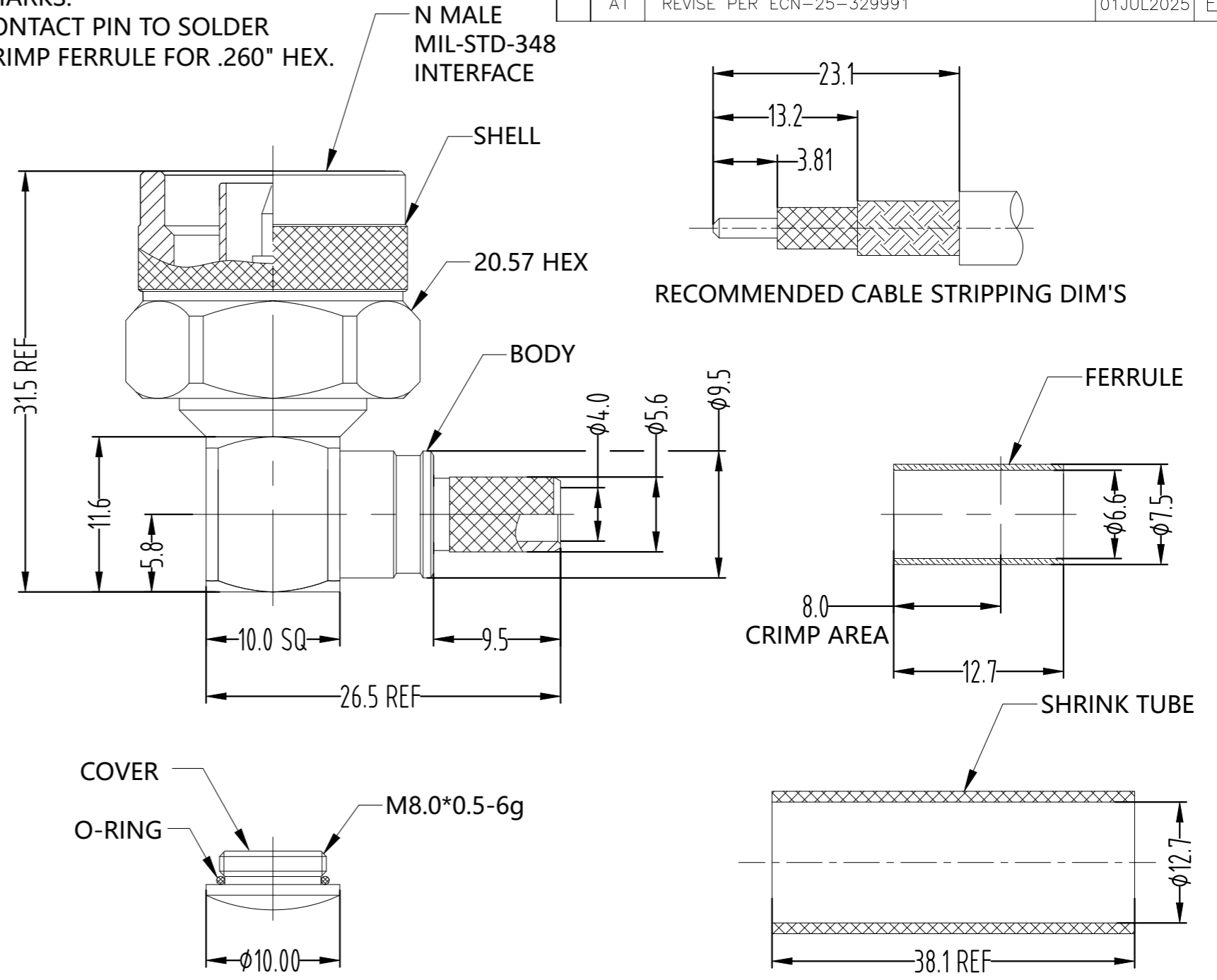
| MATERIALS AND PLATING | | UNIT: MICRO-INCHES |
|-----------------------|------------------|----------------------------------|
| PART NAME | MATERIAL | PLATING |
| BODY/SHELL | BRASS | ALBALOY 100u"/COPPER 50 u" |
| CONTACT PIN | PHOSPHOR BRONZE | GOLD 50u"/Ni-P 100u"/COPPER 50u" |
| INSULATOR | PTFE MIL-P-19468 | N/A |
| COVER | BRASS | ALBALOY 100u"/COPPER 50 u" |
| GASKET | SILICONE(RED) | N/A |
| FERRULE | BRASS | ALBALOY 100u"/COPPER 50 u" |

| ELECTRICAL CHARACTERISTICS | |
|---------------------------------|------------------------|
| IMPEDANCE | 50 Ω |
| VOLTAGE RATING | 330V(rms) |
| FREQUENCY RANGE | DC-6 GHz |
| DIELECTRIC WITHSTANDING VOLTAGE | >1500 V |
| CONTACT RESISTANCE | CENTER CONTACT <1.0 mΩ |
| | OUTER CONTACT <0.2mΩ |
| INSULATION RESISTANCE | >5000 MΩ |
| INSERTION LOSS | N/A |
| VSWR | <1.30(DC-6GHz) |
| RF - LEAKAGE | N/A |

| MECHANICAL CHARACTERISTICS | |
|----------------------------|--------------|
| DURABILITY | > 500 cycles |

| ENVIRONMENTAL PARAMETER | |
|-------------------------|---------------------------------|
| TEMPERATURE RANGE | -65 °C~+165 °C |
| WATERPROOF | N/A |
| THERMAL SHOCK | MIL- STD 202, Meth. 107,Cond. B |
| VIBRATION | MIL- STD 202, Meth. 204,Cond. D |
| SHOCK | MIL- STD 202, Meth. 213,Cond. I |
| CORROSION | MIL- STD 202, Meth. 101,Cond. B |

REMARKS:
 1.CONTACT PIN TO SOLDER
 2.CRIMP FERRULE FOR .260" HEX.



| | |
|------|-------------|
| | 2504643-1 |
| MARK | PART NUMBER |

NOTES:
 1 ALL DIMENSIONS ARE NOMINAL FOR REFERENCE ONLY UNLESS OTHERWISE STATED;
 2 CONTACT PIN SOLDER WITH CABLE. THE CRIMP DIMENSION FOR FERRULE IS .260" HEX.
 3 BAG PACKAGING;
 4 RoHS: COMPLIANT.

| | | | | | | | | | | | |
|--|--|----------|----|------------------|---------------------|------------------|-----------|--------------------------------------|---------------|-------|----|
| THIS DRAWING IS A CONTROLLED DOCUMENT. | | DWN | ED | 28MAR2025 | TE Connectivity | NAME | | N Plug RA Crimp LMR-240 White Bronze | | | |
| DIMENSIONS: | | CHK | TP | 28MAR2025 | | PRODUCT SPEC | | - | | | |
| TOLERANCES UNLESS OTHERWISE SPECIFIED: | | APVD | WH | 28MAR2025 | | APPLICATION SPEC | | - | | | |
| mm | | MATERIAL | | WEIGHT | | 0 | SIZE | A3 | CAGE CODE | 00779 | |
| 0 PLC ± - 1 PLC ± 0.3 2 PLC ± 0.2 3 PLC ± 0.1 4 PLC ± - ANGLES ± 5° | | FINISH | | CUSTOMER DRAWING | | DRAWING NO | G=2504643 | | RESTRICTED TO | - | |
| SCALE | | | | | | 1:1 | SHEET | | 1 OF 1 | REV | A1 |