

Basic features

Application	Profinet , CAT 5
Approval/Conformity	CE cULus WEEE UKCA

Electrical connection

Bending radius min., fixed cable	5 x D
Bending radius min., flexible cable	15 x D
Cable	PUR Shielded Green, 35 m, drag chain compatible
Cable diameter D	6.70 mm ±0.30 mm
Cable, bending cycles min.	2 mil.
Cable, note	Profinet Type C, CAT 5E by IEC 61156-6
Conductor cross-section	22 AWG
Connection 1	M12x1-Male, straight, 4-pin, D-coded
Connection 2	RJ45-Male, straight, 4-pin
Number of conductors	4
System	Molded/assembled

Electrical data

Cable rated voltage AC max.	300 V
Cable rated voltage DC max.	300 V
Conductor resistance	(AWG 22) 55 Ohm/km at 20 °C
Isolation resistance	≥ 500 MOhm x km
Operating voltage Ub	60 VDC
Operating voltage max. DC (UL)	42 V
Rated current (40 °C)	1.5 A
Surge impedance	100 Ohm ±5 Ohm at 100 MHz
Transfer rate	10/100 Mbit/s

Environmental conditions

Cable temperature, fixed routing	-40...80 °C
Cable temperature, flexible routing	-20...60 °C
IP rating	IP67/IP20

Material

Cable jacket material, note	Shielded
Cable jacket, material	TPU
Cable shield	Aluminum foil and copper braid
Material contact carrier	PUR/PC
Material contacts	Gold plated/Gold plated
Material cover nut	Die-cast zinc nickel-plated
Material grip	PUR/PUR

Double-Ended Cordsets
BCC M414-E834-8G-668-PS54N2-350
 Order Code: BCC0KP9



Mechanical data

Acceleration max., drag chain	2 m/s ²
Cable jacket, color	Green
Cable length L	35.00 m

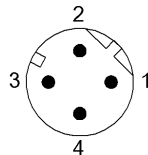
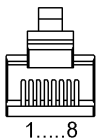
Cable properties

Horizontal travel permitted, drag chain	5 m	drag chain compatible
Tightening torque pigtail	0.6 Nm/-	
Traverse speed max., drag chain	200 m/min	
Vertical travel permitted, drag chain	5 m	

Remarks

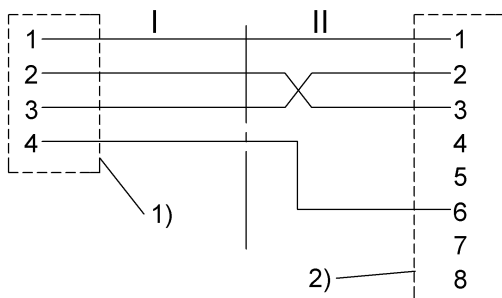
Cable construction acc. to UL-AWM Style 20549
 Halogen-free per DIN VDE 0472 Part 815
 Flame resistance VW-1/FT1
 Silicone-free
 Enclosure rating per IEC 60529 or ISO 20653, only in screwed state with the associated mating piece.

Connector Drawings



II	I
PIN 1: yellow	PIN 1: yellow
PIN 2: orange	PIN 2: white
PIN 3: white	PIN 3: orange
PIN 4: not used	PIN 4: blue
PIN 5: not used	
PIN 6: blue	
PIN 7: not used	
PIN 8: not used	

Wiring Diagrams (Schematic)



- 1) Shield on cover nut
- 2) Shield on housing