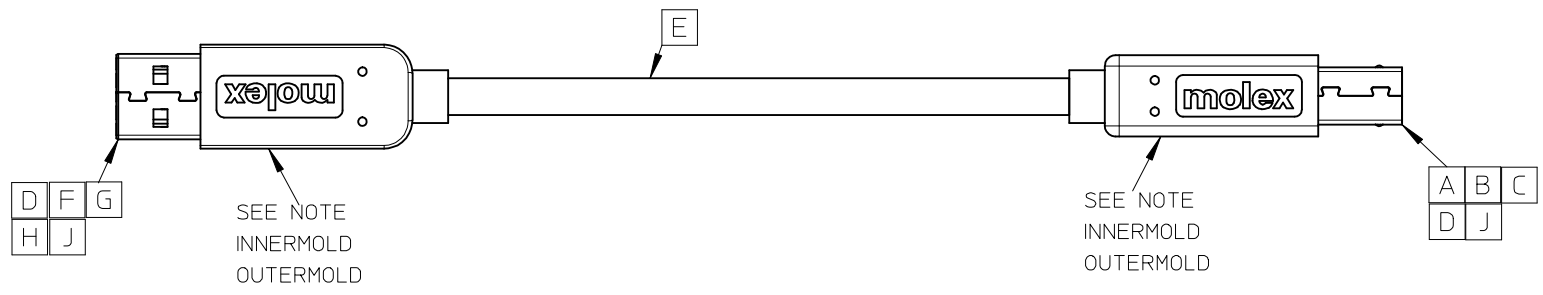
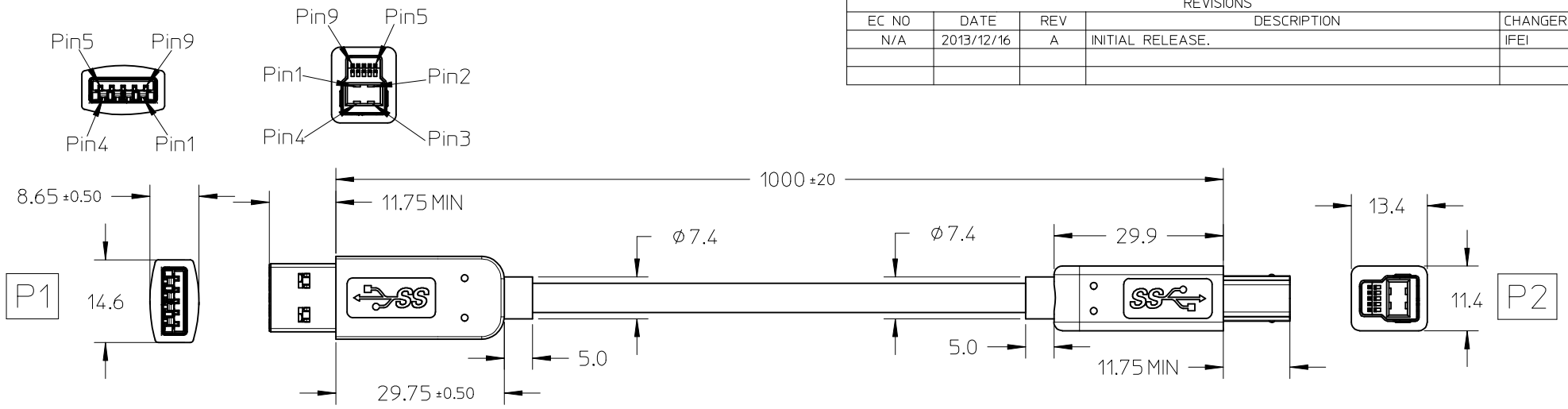


7 6 5 4 3 2 1

REVISIONS				
EC NO	DATE	REV	DESCRIPTION	CHANGER
N/A	2013/12/16	A	INITIAL RELEASE.	IFEI



WIRING CHART			
P1	SIGNAL NAME	WIRE COLOUR	P2
1	VBUS	RED	1
2	D-	WHITE	2
3	D+	GREEN	3
4	GND	BLACK	4
5	Std_SSRX-	BLUE	5
6	Std_SSRX+	YELLOW	6
7	GND_DRAIN	GND_DRAIN	7
8	Std_SSTX-	PURPLE	8
9	Std_SSTX+	ORANGE	9
SHELL	SHIELD	BRAID	SHELL

ITEM	DESCRIPTION	L(MM)	QTY
J	HST F 15MM 125C (UL) BLK HF		A/R
H	FRONT METAL FOR STD A PLUG		1
G	USB 3.0 STD A CONNECTOR ASSY		1
F	REAR METAL FOR STD A PLUG		1
E	USB 3.0 CABLE, HF		A/R
D	PRE-CUT COPPER FOIL 25*5		2
C	REAR METAL SHELL FOR B PLUG		1
B	STD B CONNECTOR ASSY		1
A	FRONT METAL SHELL FOR B PLUG		1

SEE REVISIONS EC NO: CPG2014-2080 DRWN: IFEI CHKD: APPR: RTSAI	DESCRIPTION 2014/01/16 2014/01/17	QUALITY SYMBOLS	GENERAL TOLERANCES (UNLESS SPECIFIED)	DIMENSION STYLE	SCALE	DESIGN UNITS	THIRD ANGLE PROJECTION
		$\nabla_F = 0$ $\nabla_F = 0$ $\nabla_F = 0$	4 PLACES ± --- ± --- 3 PLACES ± --- ± --- 2 PLACES ± 0.25 ± --- 1 PLACE ± 0.5 ± --- 0 PLACE ± --- ± ---	MM ONLY	1:1	METRIC	
		ANGULAR ± 3 ° DRAFT WHERE APPLICABLE MUST REMAIN WITHIN DIMENSIONS	DRAWN BY DATE IFEI 2014/01/16 CHECKED BY DATE DATE APPROVED BY DATE RTSAI 2014/01/17	TITLE	USB 3.0 A MALE TO B MALE 1M HF VERSION		
		MATERIAL NO. 687890024	DOCUMENT NO. SD-68789-016	SHEET NO.	1 OF 2		

**molex**

6 5 4 3 2 1

