

REVISION V

TABLE 1			
PART NUMBER	END 2 OPTION	CABLE	"B"
SCPU-10-X-XX-XX-MBS-XXX	-MBS OR -MB	-UCA-03-XX	22.8 [.90]
SCPU-10-X-XX-XX-MBS-XXX	-AMS OR -AM	-UCA-03-XX	29.2 [1.15]
SCPU-10-X-XX-XX-MBS-XXX	-BC	-UCA-03-XX	11.4 [.45]

SCPU-10-X-XX.XX-XXX-XXX

PLATING
-G: .000030" GOLD ON CONTACT AREAS, NICKEL ON SHELLS

LENGTH
-XX.XX (IN METERS)
(0.17M[6.69] MIN - 50.00M[1968.50] MAX (SEE NOTE 18))

END 1 OPTIONS
-MBS: MINI USB TYPE B PLUG (END 1 SEALED ONLY)

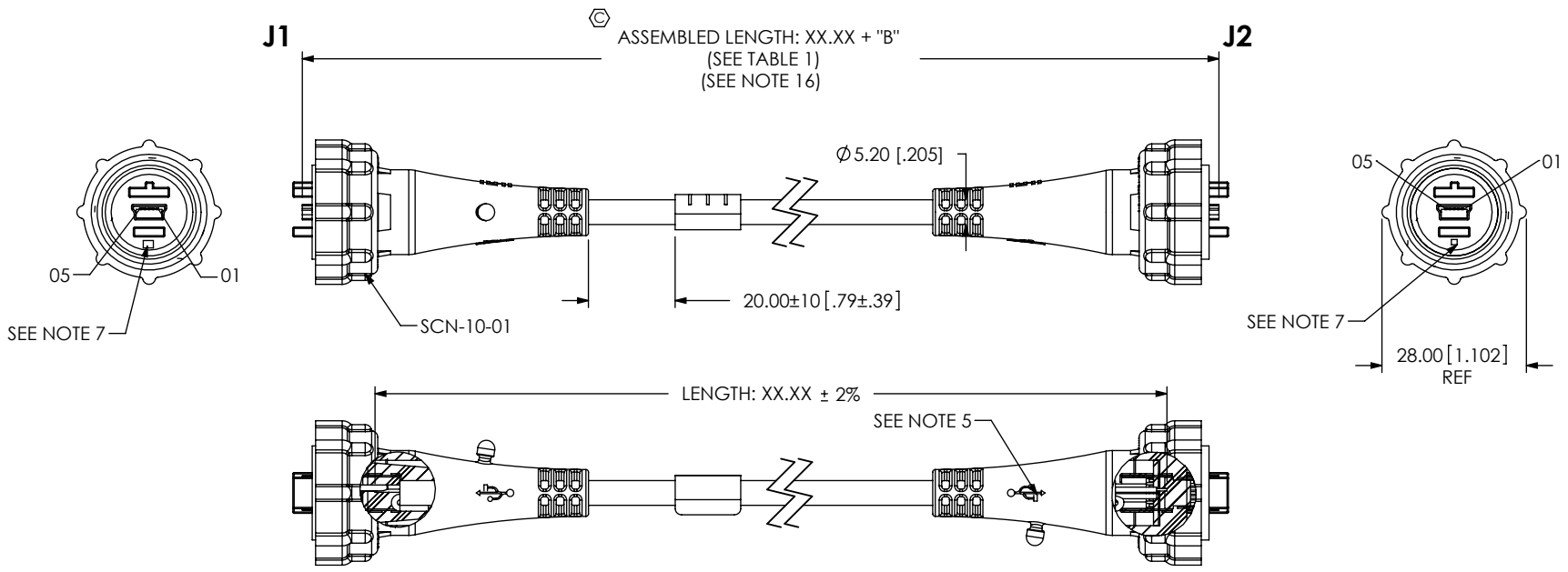
END 2 OPTIONS
-AMS: SEALED SIZE 17 USB TYPE A PLUG (END 2 SEALED ONLY)
-AM: UNSEALED USB TYPE A PLUG (END 2 UNSEALED ONLY)
-MBS: SEALED MINI USB TYPE B PLUG (END 2 SEALED ONLY)
-MB: UNSEALED MINI USB TYPE B PLUG (END 2 UNSEALED ONLY)
-BC: BLUNT CUT (SEE FIG 5)

 THIS PRODUCT MANUFACTURED WITH LEAD-FREE PROCESSING

DESIGNED & DIMENSIONED IN MILLIMETERS[INCHES]

NOTE:
-02.00, -03.00, AND -05.00 ARE CATALOG STANDARD LENGTHS. FOR OTHER LENGTHS (0.17M[6.69] MIN - 5.00M[196.85] MAX) CONTACT SAMTEC.

FIG 1
SCPU-10-X-XX.XX-MBS-MBS



DO NOT SCALE FROM THIS PRINT

NOTES:

- ⊗ REPRESENTS A CRITICAL DIMENSION.
- SURFACE TO BE RECESSED 0.22[.009].
- USB LOGO TO BE RAISED 0.25[.010].
- USB LOGO'S TO BE ALIGNED TO USB CONNECTORS AS SHOWN.
- SAMTEC LOGO TO APPEAR ON SURFACE AS SHOWN, APPROXIMATELY 4.50[.177] x 7.50[.295], RAISED 0.25[.010].
- NOTE DELETED.
- ALL MULTIPLE CAVITY MOLDS SHALL IDENTIFY EACH CAVITY WITH A NUMBER DESIGNATION LOCATED WHERE SHOWN.
- ALL IDENTIFICATION MARKS MUST NOT STAND GREATER THAN 0.051[.002] OFF THE SURFACE OF THE PART.
- MOLD TO BE INSERTED TO ACCEPT DIFFERENT CABLE DIAMETERS.
- ⊗ ASSEMBLY TO BE 100% TESTED FOR OPENS AND SHORTS, HI-POT TESTED AT 200V BEFORE PREMOLD AND AFTER FINAL ASSEMBLY IS COMPLETE. AFTER FINAL ELECTRICAL TEST, LABEL EACH ASSEMBLY WITH 1 LABEL-ET.
- ALL EJECTOR PIN AND GATE LOCATIONS MUST BE APPROVED BY SAMTEC PRODUCT ENGINEERING.
- ANY ADDITIONAL VOIDING AND/OR MODIFICATIONS TO VOIDING MUST BE APPROVED BY SAMTEC PRODUCT ENGINEERING.
- ALL DRAFT MUST BE WITHIN THE SPECIFIED TOLERANCES.
- ALL INSIDE/OUTSIDE RADII 0.13 MAX UNLESS OTHERWISE STATED.
- NOTE DELETED.
- ASSEMBLY TO BE SHIPPED IN BULK PACKAGING.
- NOTE DELETED.
- LENGTHS GREATER THAN 05.00MM ARE NOT SUPPORTED BY USB 2.0 TEST DATA.
- NOTE DELETED.
- FOR -BC CUT LENGTH = (XX.XX x 2) + 51[2.0] ± 2%


UNLESS OTHERWISE SPECIFIED, DIMENSIONS ARE IN MILLIMETERS. TOLERANCES ARE:

DECIMALS	ANGLES
X.X: ±0.35 [.014]	2°
X.XX: ±0.25 [.010]	
X.XXX: ±0.15 [.006]	

MATERIAL: INSULATOR: GLASS FILLED THERMOPLASTIC
CONTACTS: COPPER ALLOY
SHIELDS: CR5
CABLE NUT: PA66
SEALED PREMOLD: TPE (RITE FLEX 640A)
SEALED OVERMOLD: PA66 GF13 FR (70G13L); MAX REGRIND: 10%.
SHOT WEIGHT: 19.05g [.421lb]
NON-SEALED OVERMOLD: PVC; MAX REGRIND: 30%. SHOT WEIGHT: 6.80g [.151lb]

DO NOT SCALE DRAWING SHEET SCALE: 1:1.33333

PROPRIETARY NOTE
THIS DOCUMENT CONTAINS INFORMATION CONFIDENTIAL AND PROPRIETARY TO SAMTEC, INC. AND SHALL NOT BE REPRODUCED OR TRANSFERRED TO OTHER DOCUMENTS OR DISCLOSED TO OTHERS OR USED FOR ANY PURPOSE OTHER THAN THAT WHICH IT WAS OBTAINED WITHOUT THE EXPRESSED WRITTEN CONSENT OF SAMTEC, INC.



520 PARK EAST BLVD, NEW ALBANY, IN 47150
PHONE: 812-944-6733 FAX: 812-948-5047
e-Mail: info@SAMTEC.com code 55322

DESCRIPTION:
SEALED CIRCULAR CABLE PLUG, USB

DWG. NO.
SCPU-10-X-XX.XX-XXX-XXX

BY: B. PERRY 09-13-2010 SHEET 1 OF 7

FIG 2
 SCPU-10-X-XX.XX-MBS-AM SHOWN
 (SAME AS FIG 1, UNLESS OTHERWISE STATED)

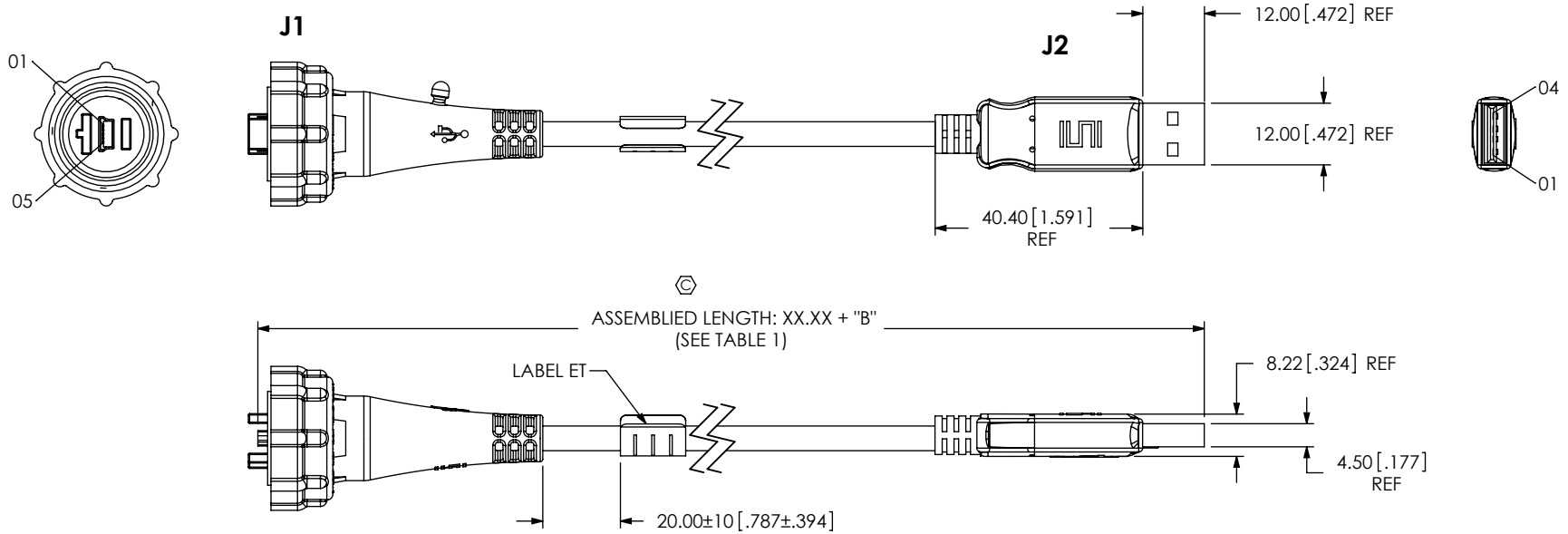
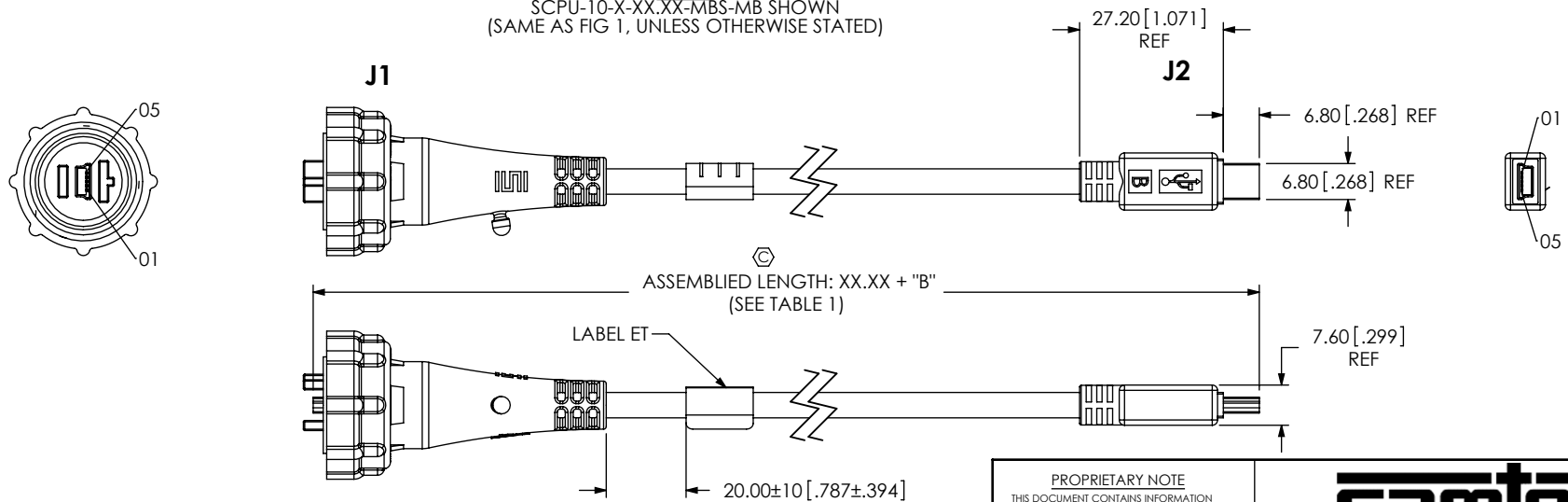


FIG 3
 SCPU-10-X-XX.XX-MBS-MB SHOWN
 (SAME AS FIG 1, UNLESS OTHERWISE STATED)



PROPRIETARY NOTE
 THIS DOCUMENT CONTAINS INFORMATION CONFIDENTIAL AND PROPRIETARY TO SAMTEC, INC. AND SHALL NOT BE REPRODUCED OR TRANSFERRED TO OTHER DOCUMENTS OR DISCLOSED TO OTHERS OR USED FOR ANY PURPOSE OTHER THAN THAT WHICH IT WAS OBTAINED WITHOUT THE EXPRESSED WRITTEN CONSENT OF SAMTEC, INC.

DO NOT SCALE DRAWING

SHEET SCALE: 1:1.33333

samtec	
520 PARK EAST BLVD, NEW ALBANY, IN 47150 PHONE: 812-944-6733 FAX: 812-948-5047 e-Mail: info@SAMTEC.com code 55322	
DESCRIPTION: SEALED CIRCULAR CABLE PLUG, USB	
DWG. NO. SCPU-10-X-XX.XX-XXX-XXX	
BY: B. PERRY	09-13-2010
SHEET 2 OF 7	

FIG 4
 SCPU-10-X-XX.XX-MBS-AMS SHOWN
 (SAME AS FIG 1, UNLESS OTHERWISE STATED)

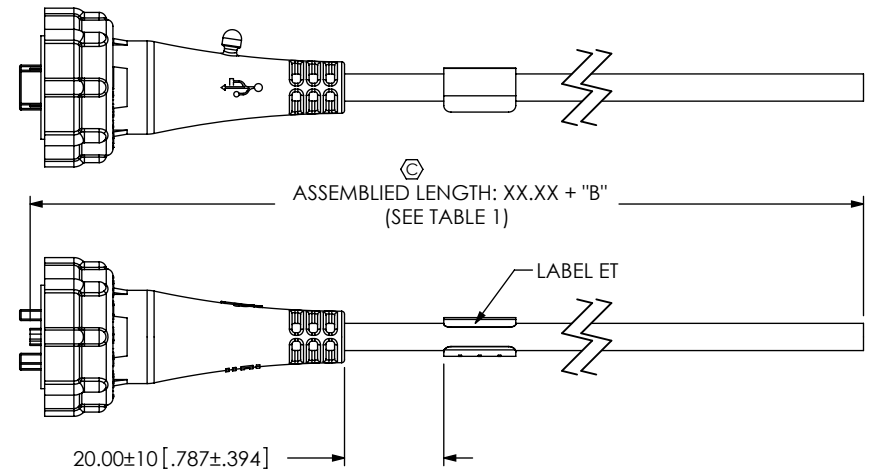
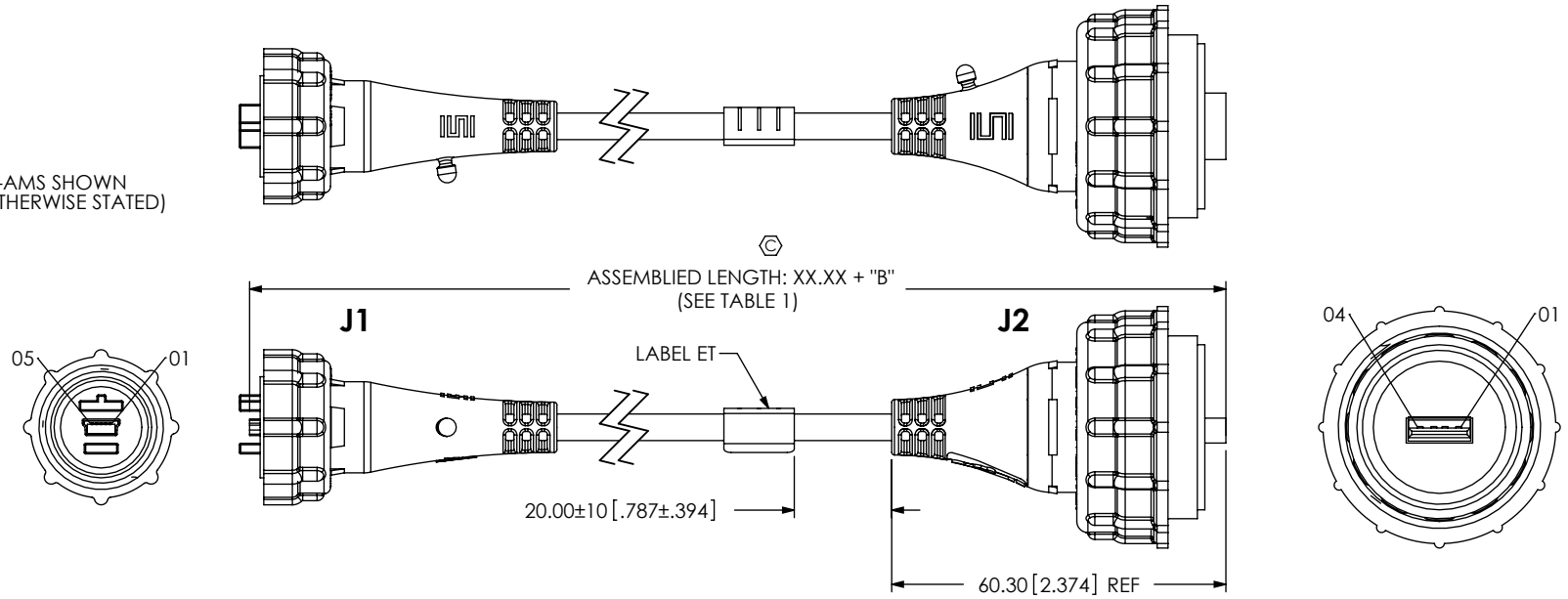


FIG 5
 SCPU-10-X-XX.XX-MBS-BC SHOWN
 (SAME AS FIG 1, UNLESS OTHERWISE STATED)

TABLE 2: PIN-OUT

J1 End	Wire Color	J2 End			
-MBS		-MBS	-AMS	-AM	-MB
01	RED	01	01	01	01
02	WHITE	02	02	02	02
03	GREEN	03	03	03	03
04	NOT CONNECTED	04	n/a	n/a	04
05	BLACK	05	04	04	05
USB Shield	DRAIN/CABLE SHIELD	USB Shield	USB Shield	USB Shield	USB Shield

PROPRIETARY NOTE
 THIS DOCUMENT CONTAINS INFORMATION
 CONFIDENTIAL AND PROPRIETARY TO
 SAMTEC, INC. AND SHALL NOT BE REPRODUCED
 OR TRANSFERRED TO OTHER DOCUMENTS OR
 DISCLOSED TO OTHERS OR USED FOR ANY
 PURPOSE OTHER THAN THAT WHICH IT WAS
 OBTAINED WITHOUT THE EXPRESSED WRITTEN
 CONSENT OF SAMTEC, INC.

DO NOT SCALE DRAWING

SHEET SCALE: 1:1.33333

samtec

520 PARK EAST BLVD, NEW ALBANY, IN 47150
 PHONE: 812-944-6733 FAX: 812-948-5047
 e-Mail: info@SAMTEC.com code 55322

DESCRIPTION:
 SEALED CIRCULAR CABLE PLUG, USB

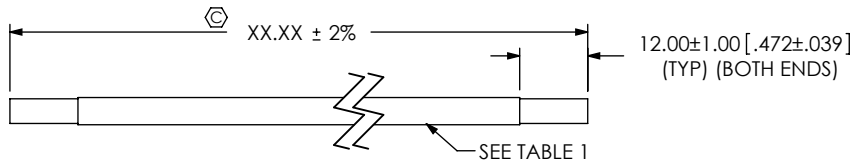
DWG. NO.
 SCPU-10-X-XX.XX-XXX-XXX

BY: B. PERRY 09-13-2010 SHEET 3 OF 7

REVISION V

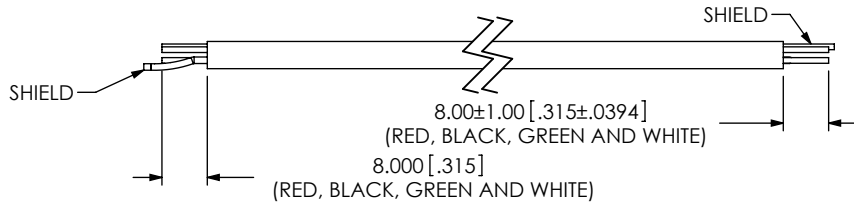
-MBS, MB AND -AMS, AM (-BC: SEE NOTE 20 FOR CUT LENGTH)
IN-PROCESS 1

CUT CABLE TO LENGTH & STRIP OUTER
JACKET TO DIMENSION SHOWN



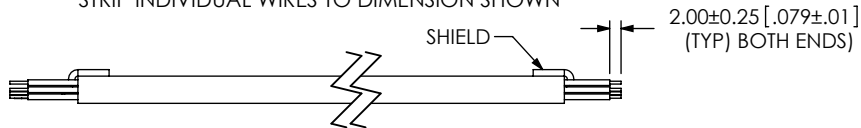
-MBS, MB AND -AMS, AM
IN-PROCESS 2

FOLD SHIELD BACK & TRIM WIRES TO DIMENSION SHOWN



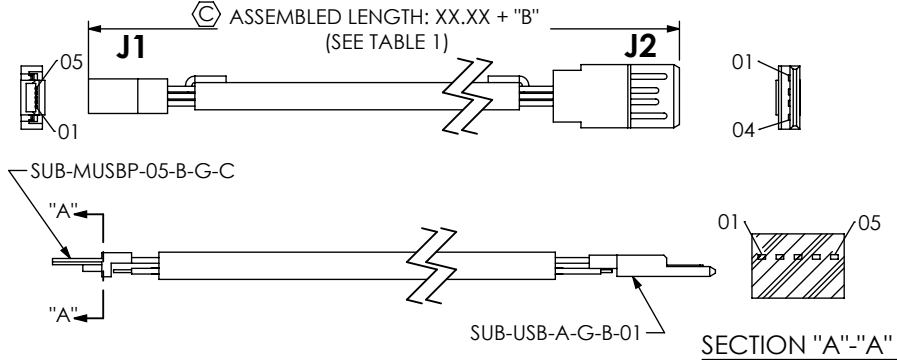
-MBS, MB AND -AMS, AM
IN-PROCESS 3

STRIP INDIVIDUAL WIRES TO DIMENSION SHOWN



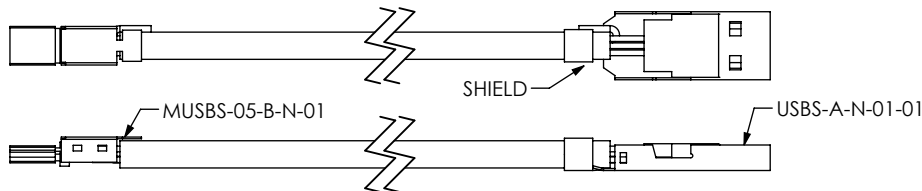
-MBS, MB AND -AMS, AM
IN-PROCESS 4

TERMINATE TO SUB-MUSBP-05-B-G-C AND SUB-USB-A-G-B-01



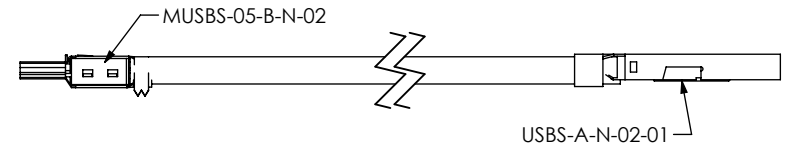
-MBS, MB AND -AMS, AM
IN-PROCESS 5

ADD MUSBS-05-B-N-01 AND USBS-A-N-01-01



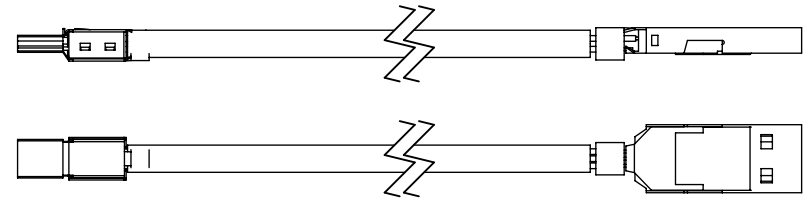
-MBS, MB AND -AMS, AM
IN-PROCESS 6

ADD MUSBS-05-B-N-02 AND USBS-A-N-02-01



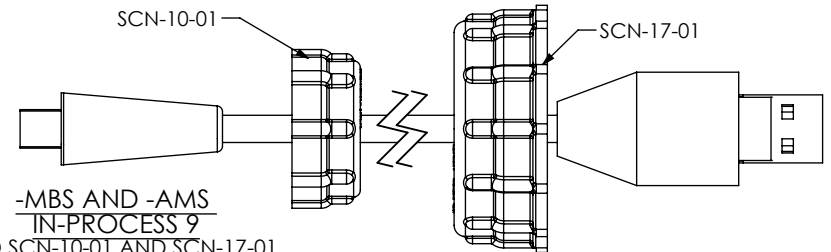
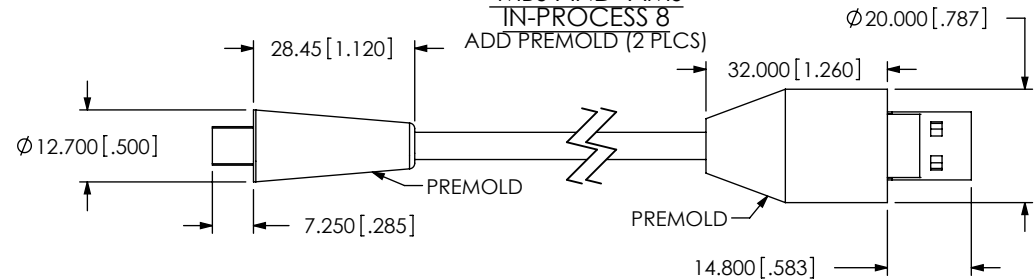
-MBS, MB AND -AMS, AM
IN-PROCESS 7

CRIMP SHELLS OVERBAND AND SHIELD, TRIM EXCESS SHIELD
(SEE NOTE 10)



-MBS AND -AMS
IN-PROCESS 8

ADD PREMOLD (2 PLCS)



-MBS AND -AMS
IN-PROCESS 9
ADD SCN-10-01 AND SCN-17-01

PROPRIETARY NOTE

THIS DOCUMENT CONTAINS INFORMATION CONFIDENTIAL AND PROPRIETARY TO SAMTEC, INC. AND SHALL NOT BE REPRODUCED OR TRANSFERRED TO OTHER DOCUMENTS OR DISCLOSED TO OTHERS OR USED FOR ANY PURPOSE OTHER THAN THAT WHICH IT WAS OBTAINED WITHOUT THE EXPRESSED WRITTEN CONSENT OF SAMTEC, INC.

DO NOT SCALE DRAWING

SHEET SCALE: 1:1.33333

samtec

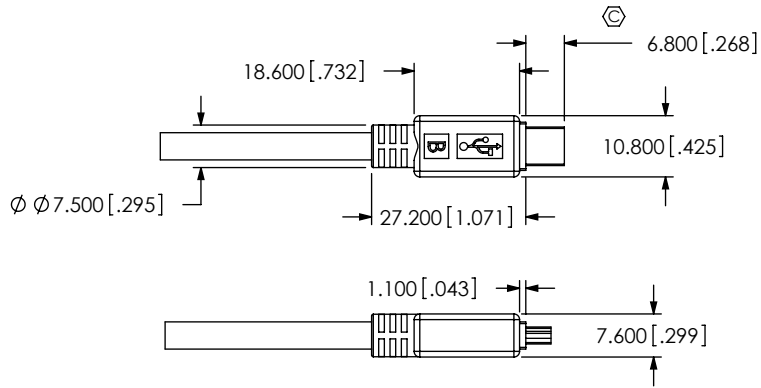
520 PARK EAST BLVD, NEW ALBANY, IN 47150
PHONE: 812-944-6733 FAX: 812-948-5047
e-Mail: info@SAMTEC.com code 55322

DESCRIPTION:
SEALED CIRCULAR CABLE PLUG, USB

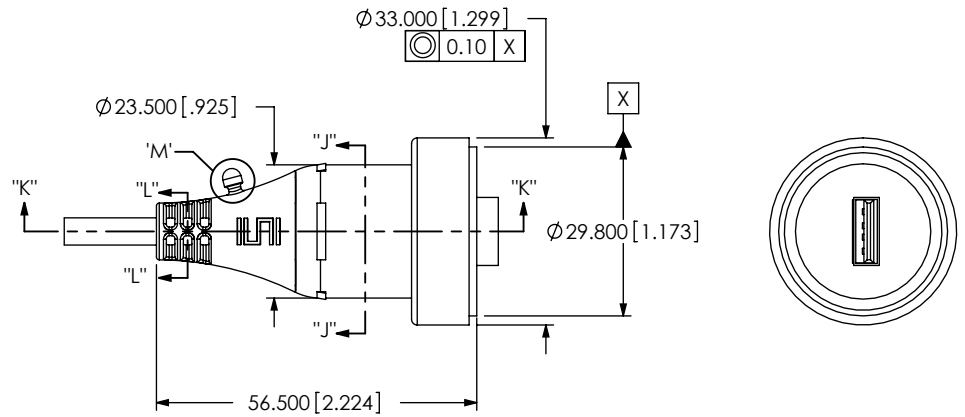
DWG. NO.
SCPU-10-X-XX.XX-XXX-XXX

BY: B. PERRY 09-13-2010 SHEET 4 OF 7

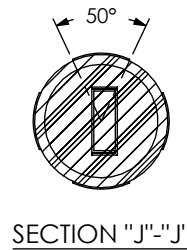
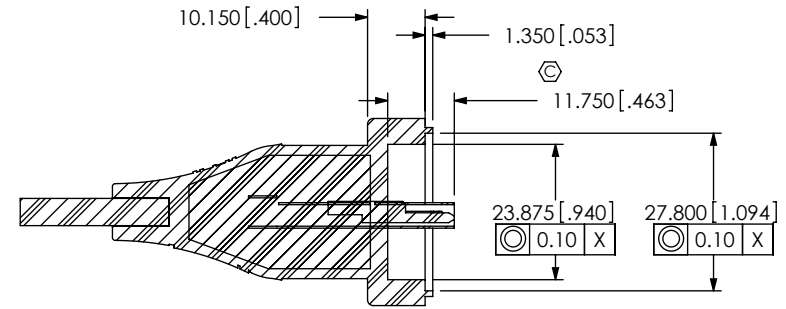
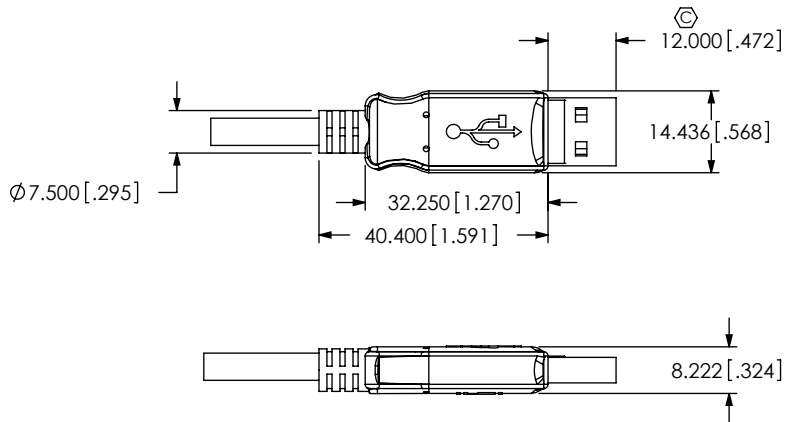
-MB
IN-PROCESS 8
NON-SEALED OVERMOLD



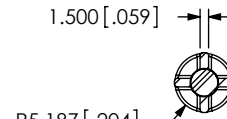
-AMS
IN-PROCESS 10
OVERMOLD SEALED CIRCULAR END



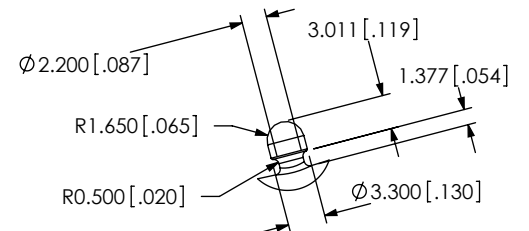
-AM
IN-PROCESS 8
NON-SEALED OVERMOLD



SECTION "K"-"K"



SECTION "L"-"L"



DETAIL 'M'
SCALE 1.5 : 1

PROPRIETARY NOTE
THIS DOCUMENT CONTAINS INFORMATION
CONFIDENTIAL AND PROPRIETARY TO
SAMTEC, INC. AND SHALL NOT BE REPRODUCED
OR TRANSFERRED TO OTHER DOCUMENTS OR
DISCLOSED TO OTHERS OR USED FOR ANY
PURPOSE OTHER THAN THAT WHICH IT WAS
OBTAINED WITHOUT THE EXPRESSED WRITTEN
CONSENT OF SAMTEC, INC.

DO NOT SCALE DRAWING

SHEET SCALE: 1:1.33333

samtec

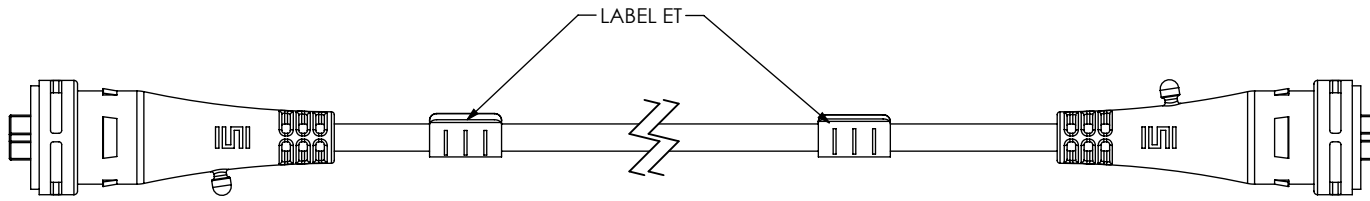
520 PARK EAST BLVD, NEW ALBANY, IN 47150
PHONE: 812-944-6733 FAX: 812-948-5047
e-Mail info@SAMTEC.com code 55322

DESCRIPTION:
SEALED CIRCULAR CABLE PLUG, USB

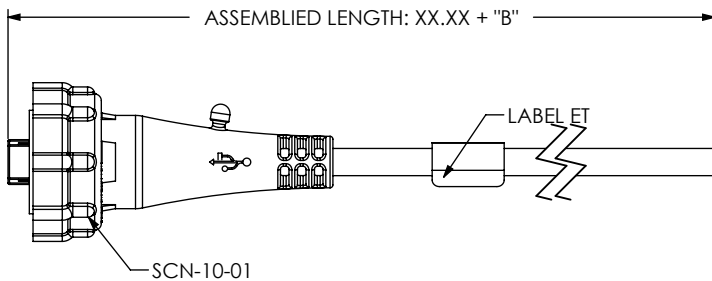
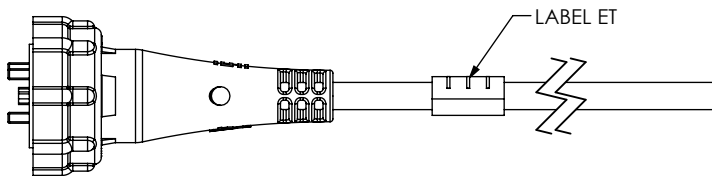
DWG. NO.
SCPU-10-X-XX.XX-XXX-XXX


BY: B. PERRY 09-13-2010 SHEET 6 OF 7

-BC: SHIELDED MINI USB B
IN-PROCESS 9
 OVERMOLD SEALED CIRCULAR END
 (SEE -MBS AND -MBS IN PROCESS 10, SHT 5)



-BC: SHIELDED MINI USB B
IN-PROCESS 11
 CUT ASSEMBLY IN HALF, ADD SCN-10-0 AND TRIM TO LENGTH



<p>PROPRIETARY NOTE THIS DOCUMENT CONTAINS INFORMATION CONFIDENTIAL AND PROPRIETARY TO SAMTEC, INC. AND SHALL NOT BE REPRODUCED OR TRANSFERRED TO OTHER DOCUMENTS OR DISCLOSED TO OTHERS OR USED FOR ANY PURPOSE OTHER THAN THAT WHICH IT WAS OBTAINED WITHOUT THE EXPRESSED WRITTEN CONSENT OF SAMTEC, INC.</p> <p>DO NOT SCALE DRAWING</p> <p>SHEET SCALE: 1:1.33333</p>		
	<p>520 PARK EAST BLVD, NEW ALBANY, IN 47150 PHONE: 812-944-6733 FAX: 812-948-5047 e-Mail info@SAMTEC.com code 55322</p>	
	<p>DESCRIPTION: SEALED CIRCULAR CABLE PLUG, USB</p>	
	<p>DWG. NO. SCPU-10-X-XX.XX-XXX-XXX</p>	
	<p>BY: B. PERRY 09-13-2010</p>	<p>SHEET 7 OF 7</p>