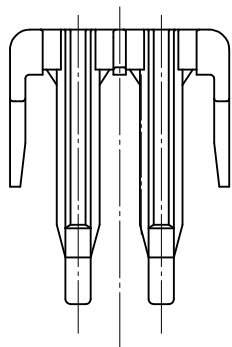
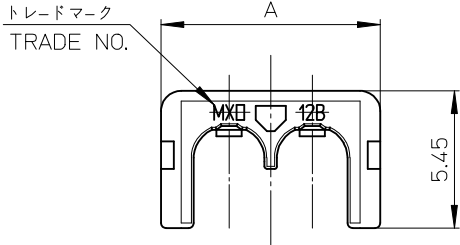
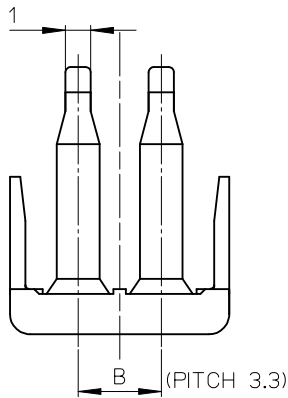
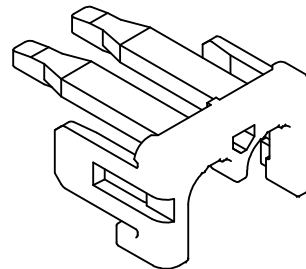
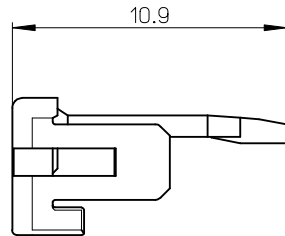
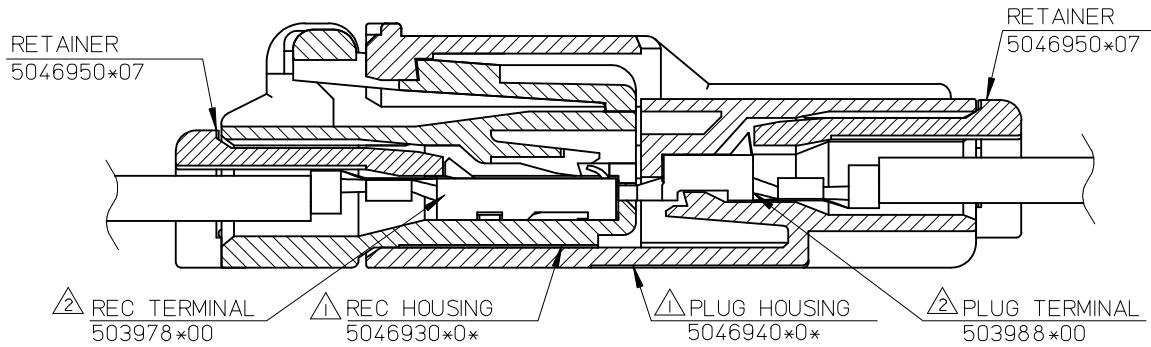


CONFIDENTIAL

SHAPE OF 2CKT



ターミナル装着状態図
TERMINAL ASSEMBLY DRAWING



ISOMETRIC VIEW (SCALE 5:1)

注記
NOTES

- △1 適合ハウジング: 504693,504694 シリーズ
APPLICABLE TERMINAL : 504693,504694 SERIES
 - △2 適合ターミナル: 50397/50598 シリーズ
APPLICABLE TERMINAL : 50397/50598 SERIES
- 材質 :PBT (UL94V-0)
MATERIAL :PBT(UL94V-0)
色 : 茶
COLOR: BROWN
3. コネクタの取扱いについては、AS-504693-001/002を参照。
PLEASE REFER TO AS-504693-001/002.

16.5	21.9	6	5046950607	504695-0*07
9.9	15.3	4	5046950407	
6.6	12.0	3	5046950307	
3.3	8.7	2	5046950207	
(B)	A	CKT.	MATERIAL NO.	MODEL NO.

RELEASED EC NO.: J2014-0916 2013/09/09 DRWN: NIKITA 2013/11/28 CHKD: KASAKAWA 2013/12/03 APPR: NUKITA	GENERAL TOLERANCES (UNLESS SPECIFIED)		DIMENSION STYLE MM ONLY		SCALE 5:1	DESIGN UNITS METRIC	THIRD ANGLE PROJECTION
	10 UNDER	±0.2	DRAWN BY MIKEDA01	DATE 2013/09/06	TITLE 3.3 W/W CONN. RETAINER		
	10 OVER 30 UNDER	±0.25	CHECKED BY KASAKAWA	DATE 2013/11/28			
	30 OVER	±0.3	APPROVED BY NUKITA	DATE 2013/12/03	molex DOCUMENT NO. SD-504695-001 SHEET NO. 1 OF 1		
	ANGULAR	±1 °	MATERIAL NO. SEE NOTE				
DRAFT WHERE APPLICABLE MUST REMAIN WITHIN DIMENSIONS		SIZE A3	THIS DRAWING CONTAINS INFORMATION THAT IS PROPRIETARY TO MOLEX INCORPORATED AND SHOULD NOT BE USED WITHOUT WRITTEN PERMISSION				