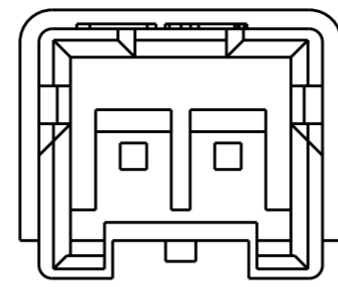
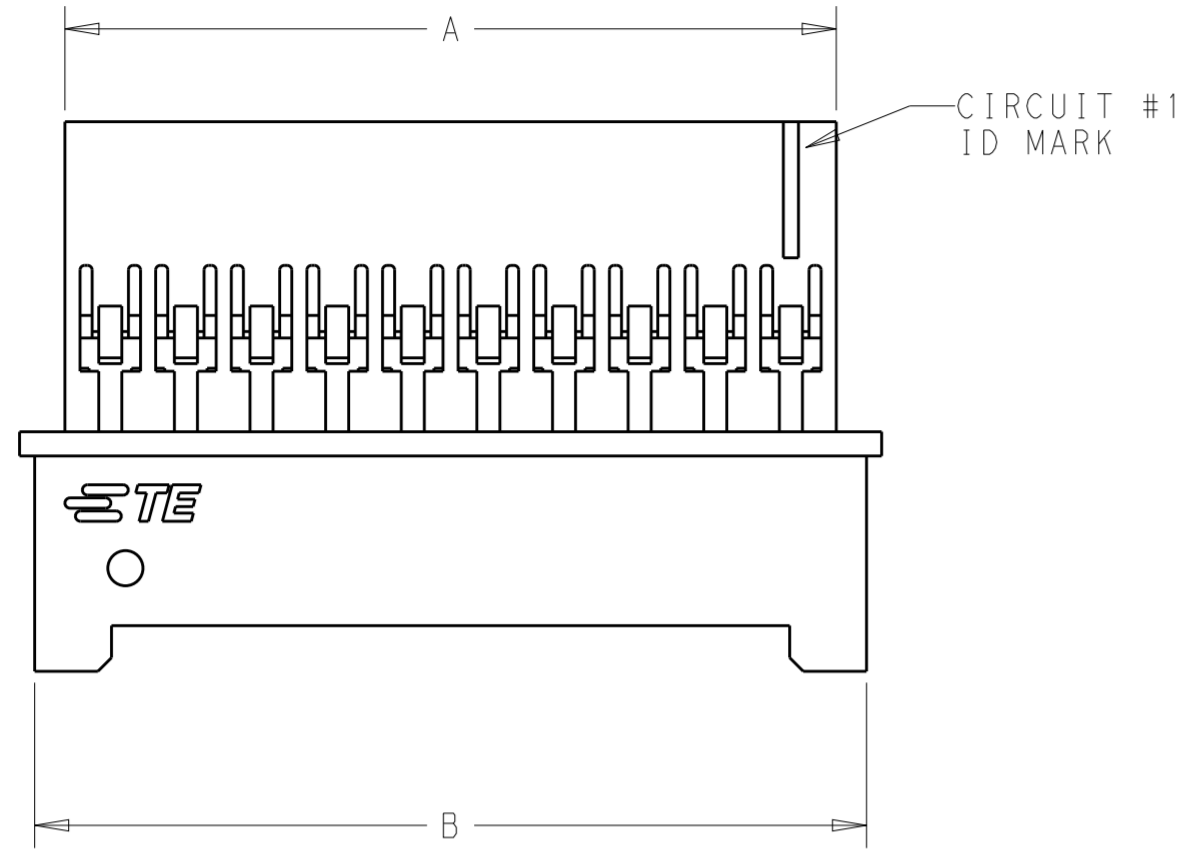
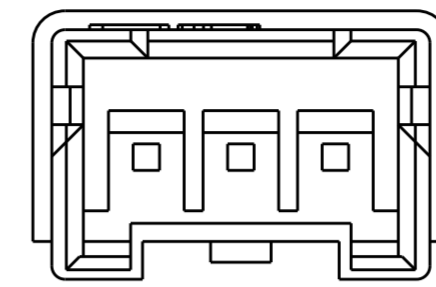


THIS DRAWING IS UNPUBLISHED. RELEASED FOR PUBLICATION  
 © COPYRIGHT 20 BY - ALL RIGHTS RESERVED.

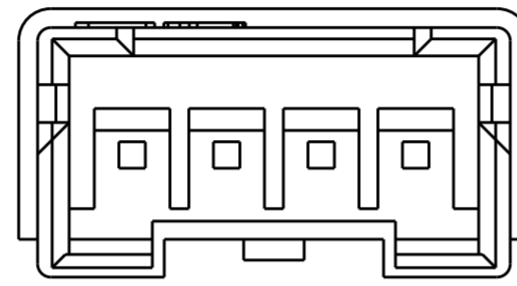
REVISIONS							
LOC	DIST	P	LTR	DESCRIPTION	DATE	DWN	APVD
-	-	A		RELEASED PER ECO-14-004608	27MAR14	JR	KR



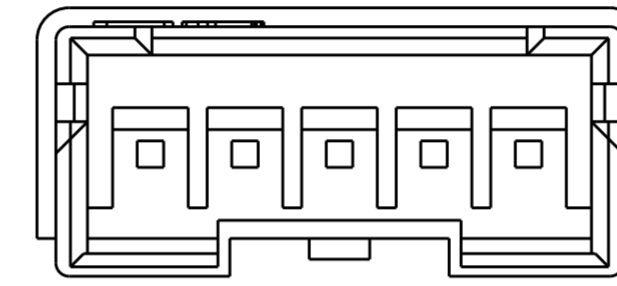
2 POSITION  
1969588-2



3 POSITION  
1969588-3

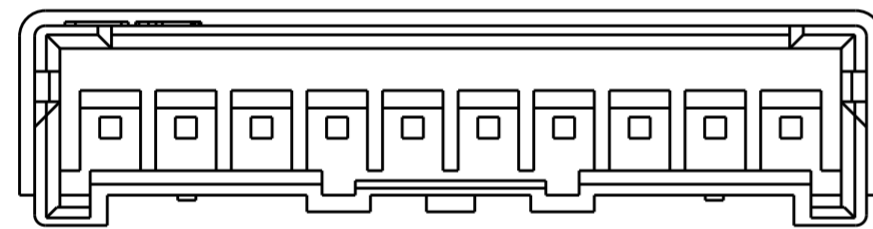


4 POSITION  
1969588-4

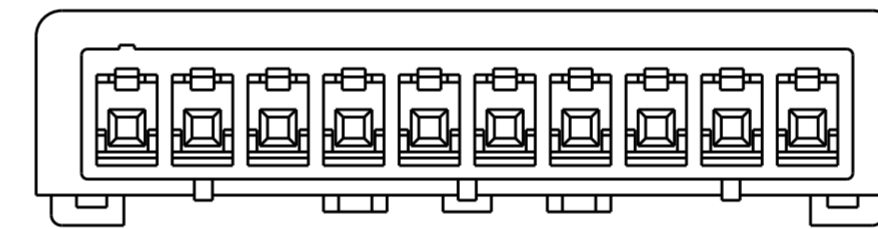
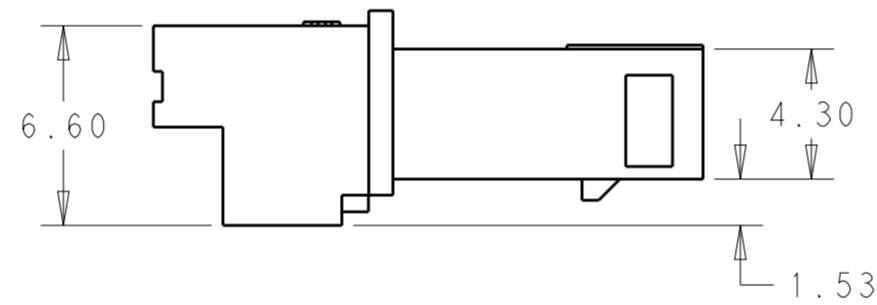


5 POSITION  
1969588-5

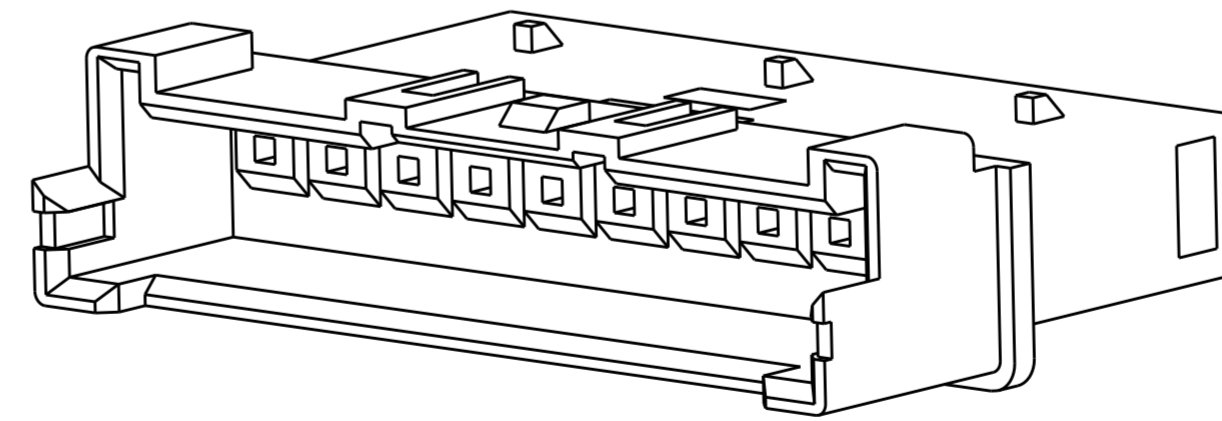
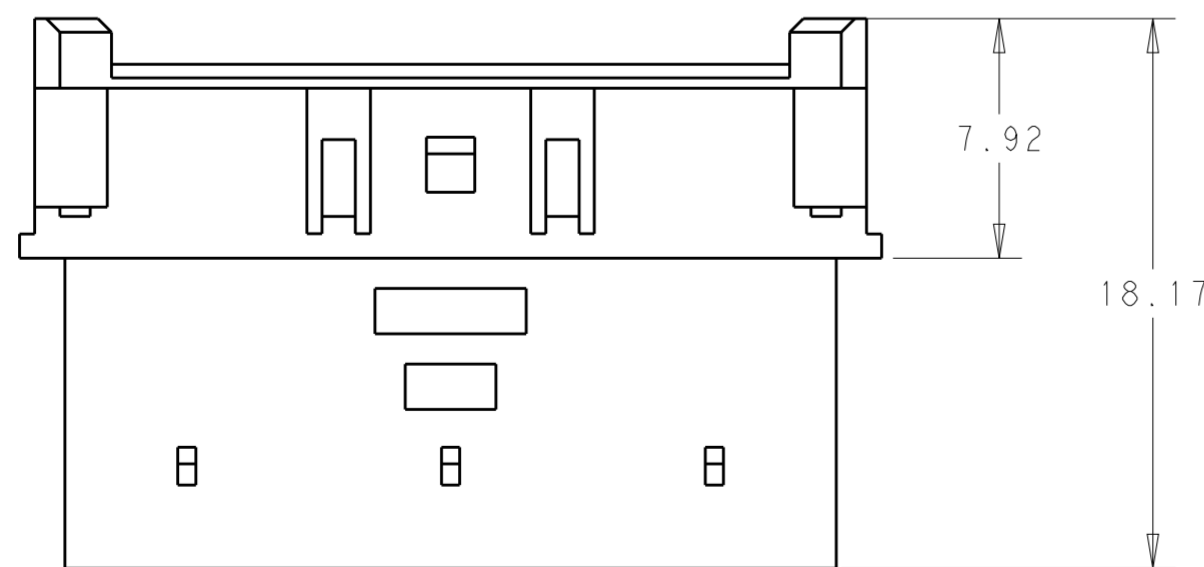
1. MATERIAL: NYLON UL94V-0, COLOR: NATURAL
2. ACCEPTS TE PIN CONTACTS P/N'S 2238007-()
3. HOUSING ACCEPTS OPTIONAL TPA P/N'S 1969443-()
4. MATES WITH TE PLUG HOUSINGS P/N'S 1969442-()



6 - 15 POSITION  
1969588-6 TO 1-1969588-5



POS	DIM. B	DIM. A	PART NO.
15	40.00	38.00	1-1969588-5
14	37.50	35.50	1-1969588-4
13	35.00	33.00	1-1969588-3
12	32.50	30.50	1-1969588-2
11	30.00	28.00	1-1969588-1
10	27.50	25.50	1-1969588-0
9	25.00	23.00	1969588-9
8	22.50	20.50	1969588-8
7	20.00	18.00	1969588-7
6	17.50	15.50	1969588-6
5	15.00	13.00	1969588-5
4	12.50	10.50	1969588-4
3	10.00	8.00	1969588-3
2	7.50	5.50	1969588-2



SCALE 5:1

THIS DRAWING IS A CONTROLLED DOCUMENT.		DWN A. NOEL	030C2012	TE Connectivity <b>ECONOMY POWER 2.5, HOUSING WIRE TO WIRE</b>	
DIMENSIONS: mm		CHK	-		
TOLERANCES UNLESS OTHERWISE SPECIFIED:		APVD	-	NAME	
0 PLC ±	1 PLC ±	PRODUCT SPEC		108-2418	
2 PLC ±0.20	3 PLC ±	APPLICATION SPEC		114-13315	
4 PLC ±	ANGLES ±	WEIGHT		-	
FINISH		Customer Drawing		SIZE	A2
SEE NOTES		SEE NOTES		CAGE CODE	C-1969588
				DRAWING NO	1969588
				RESTRICTED TO	-
				SCALE	3:1
				SHEET	1 OF 1
				REV	A