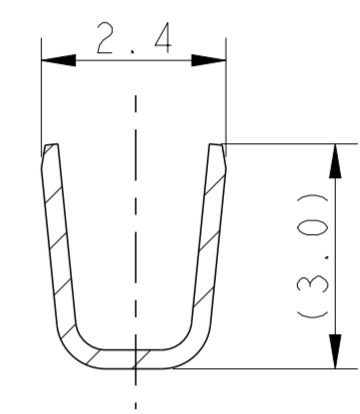
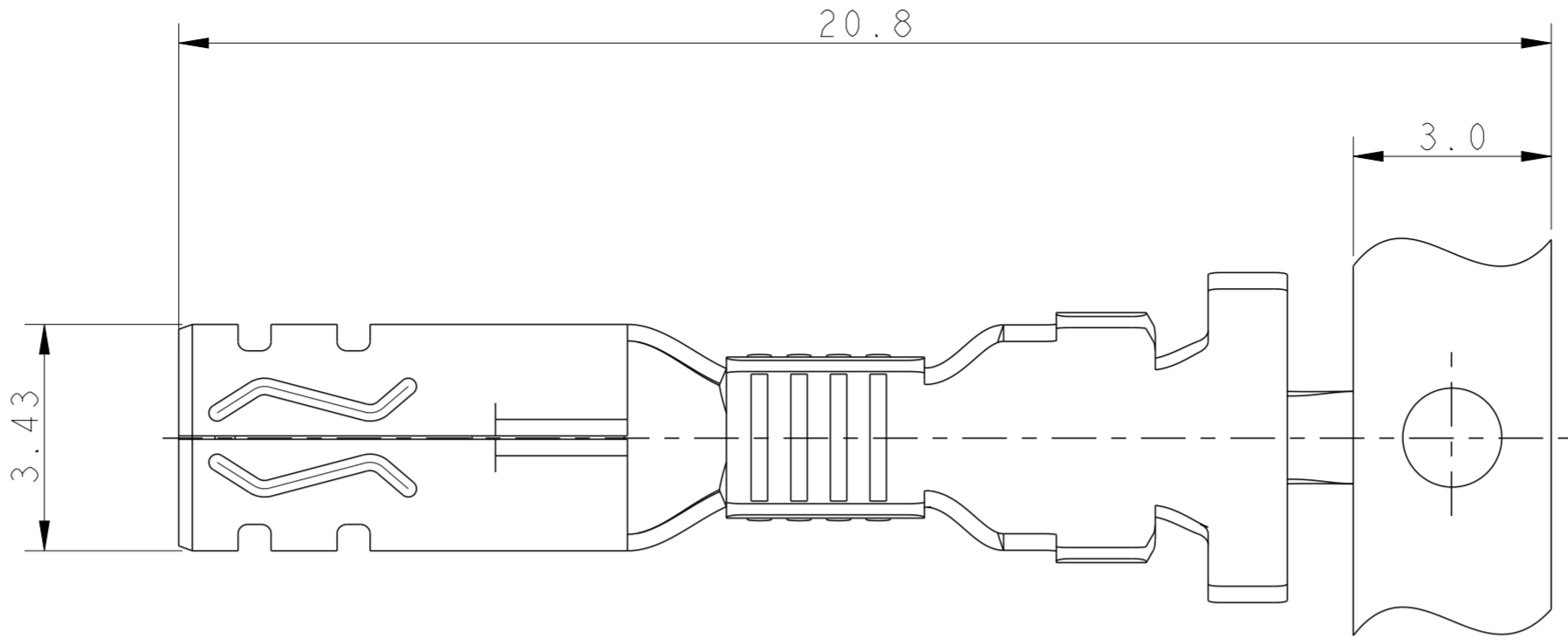
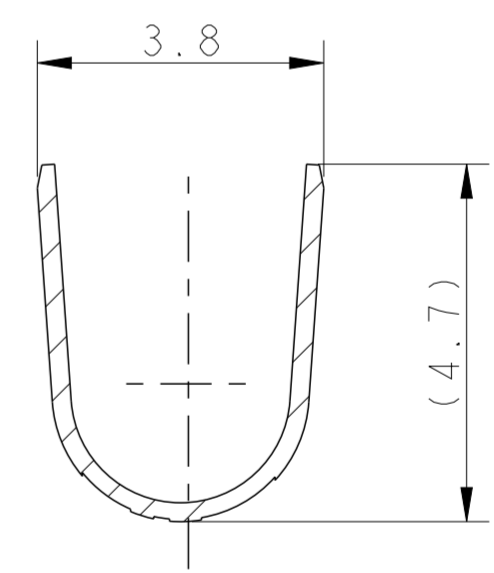
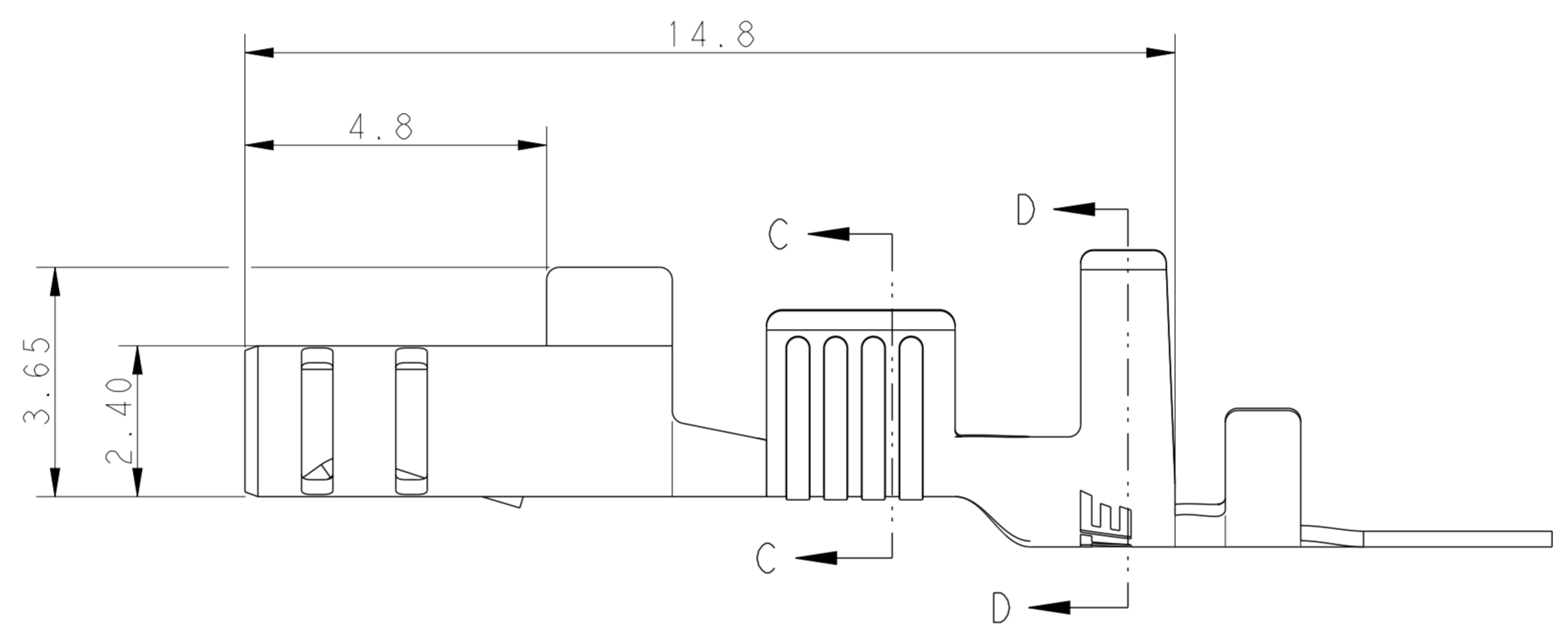


THIS DRAWING IS UNPUBLISHED. RELEASED FOR PUBLICATION 20  
 © COPYRIGHT 20 BY - ALL RIGHTS RESERVED.

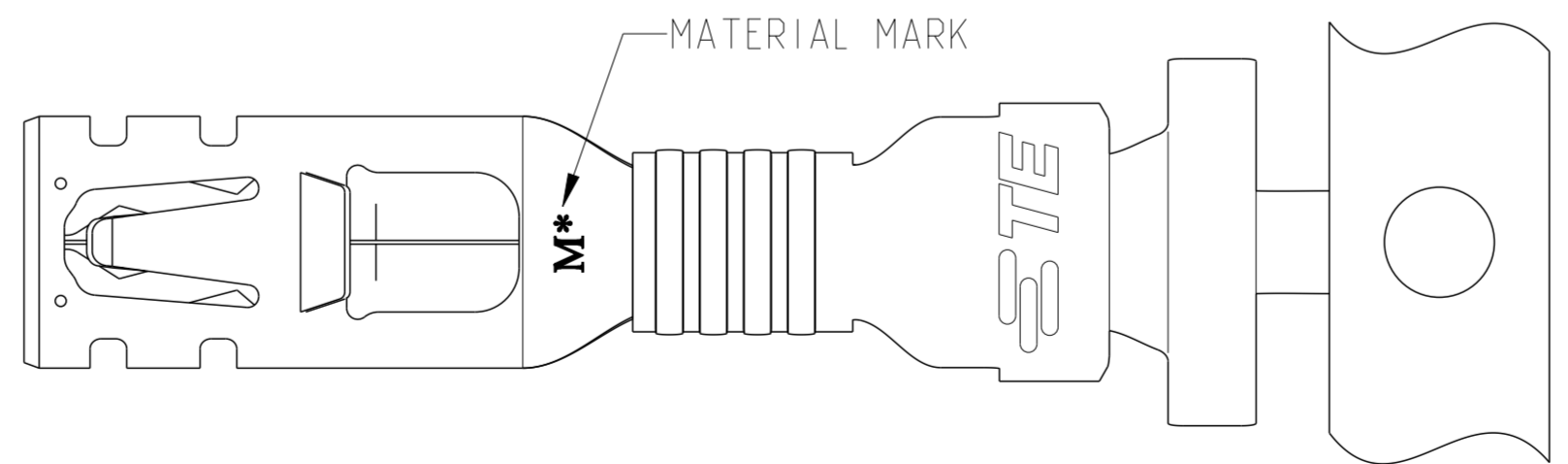
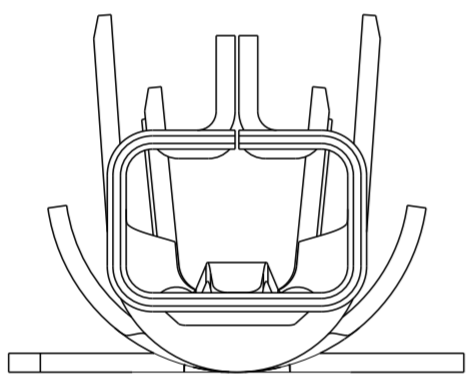
LOC	DIST	REVISIONS					
ES	00	P	LTR	DESCRIPTION	DATE	DWN	APVD
		B		REVISED PER ECR-15-003228	04MAR2015	NK	GJ



SECTION C-C



SECTION D-D



- NOTE:
1. APPLICABLE WIRE RANGE: 16~20AWG COPPER STRANDED OR 2x 22AWG COPPER STRANDED.
  2. APPLICABLE INSULATION DIAMETER: 2.40~3.30mm. 2.00~3.30mm(2.0 mm MAX FOR 2x 22AWG) WHEN AN OVERLAP INSULATION APPLICATOR IS USED.
  3. APPLICABLE MATED PLUG HOUSING P/N:  
 \*-1971773-\*/\*-1971776-\*/\*-1971876-\*/  
 \*-2232265-\*/\*-2232266-\*/\*-2232357-\*

4. THIS PRODUCT HAS NOT COMPLETED VALIDATION TESTING .

COPPER ALLOY	HIGH(150°C)	M0	1971783-2
PHOS BRONZE	STANDARD(105°C)	M1	1971783-1
MATERIAL	TEMP. RATING	MATERIAL MARK	PART NO

THIS DRAWING IS A CONTROLLED DOCUMENT.

DIMENSIONS: mm	TOLERANCES UNLESS OTHERWISE SPECIFIED: 0 PLC ±0.5 1 PLC ±0.30 2 PLC ± 3 PLC ± 4 PLC ± ANGLES ± FINISH	DWN TOMMY WU 11JUL2012 CHK HAPYE WU 11JUL2012 APVD YUHONG MAO 11JUL2012	TE Connectivity	
MATERIAL SEE TABLE	PRE-TIN	PRODUCT SPEC 108-106118 APPLICATION SPEC 114-106118	RECEPTACLE CONTACT POWER TRIPLE LOCK	
		WEIGHT -	SIZE A2	CAGE CODE 00779
		DRAWING NO 1971783		RESTRICTED TO -
		Customer Drawing		SCALE - SHEET 1 OF 1 REV B