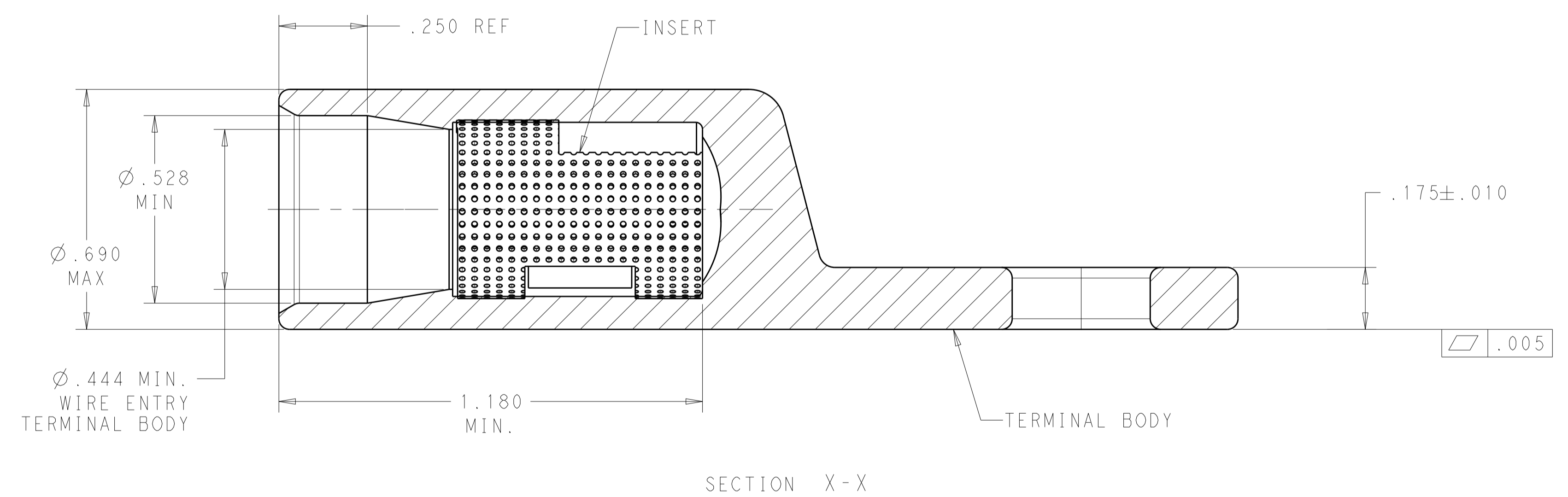
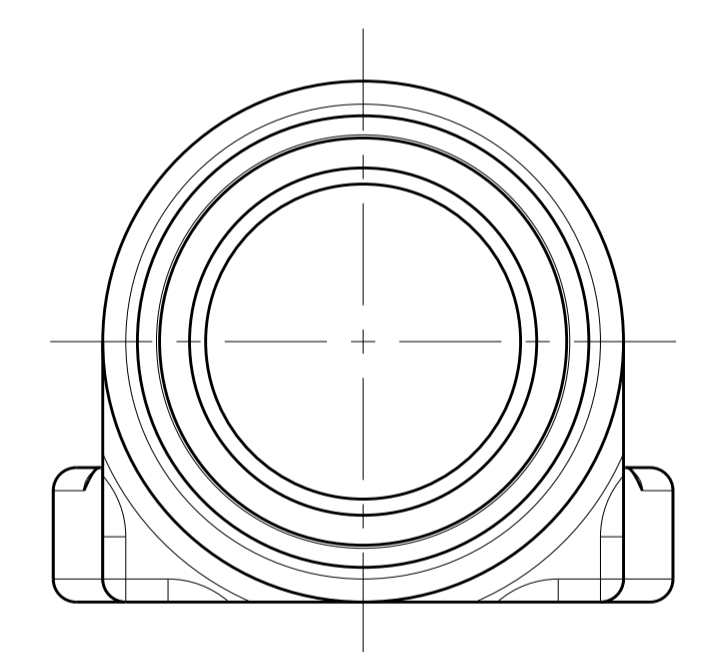
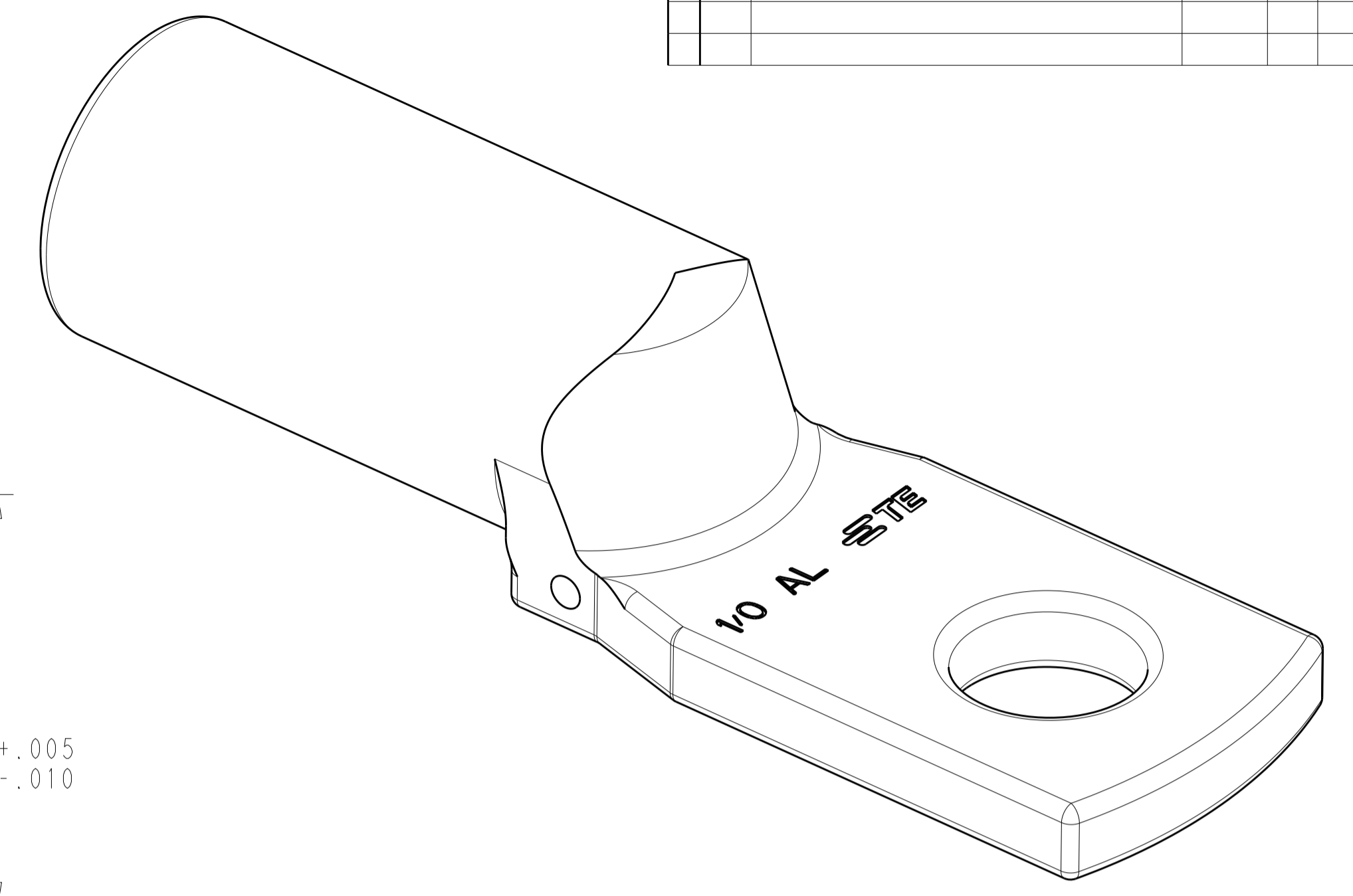
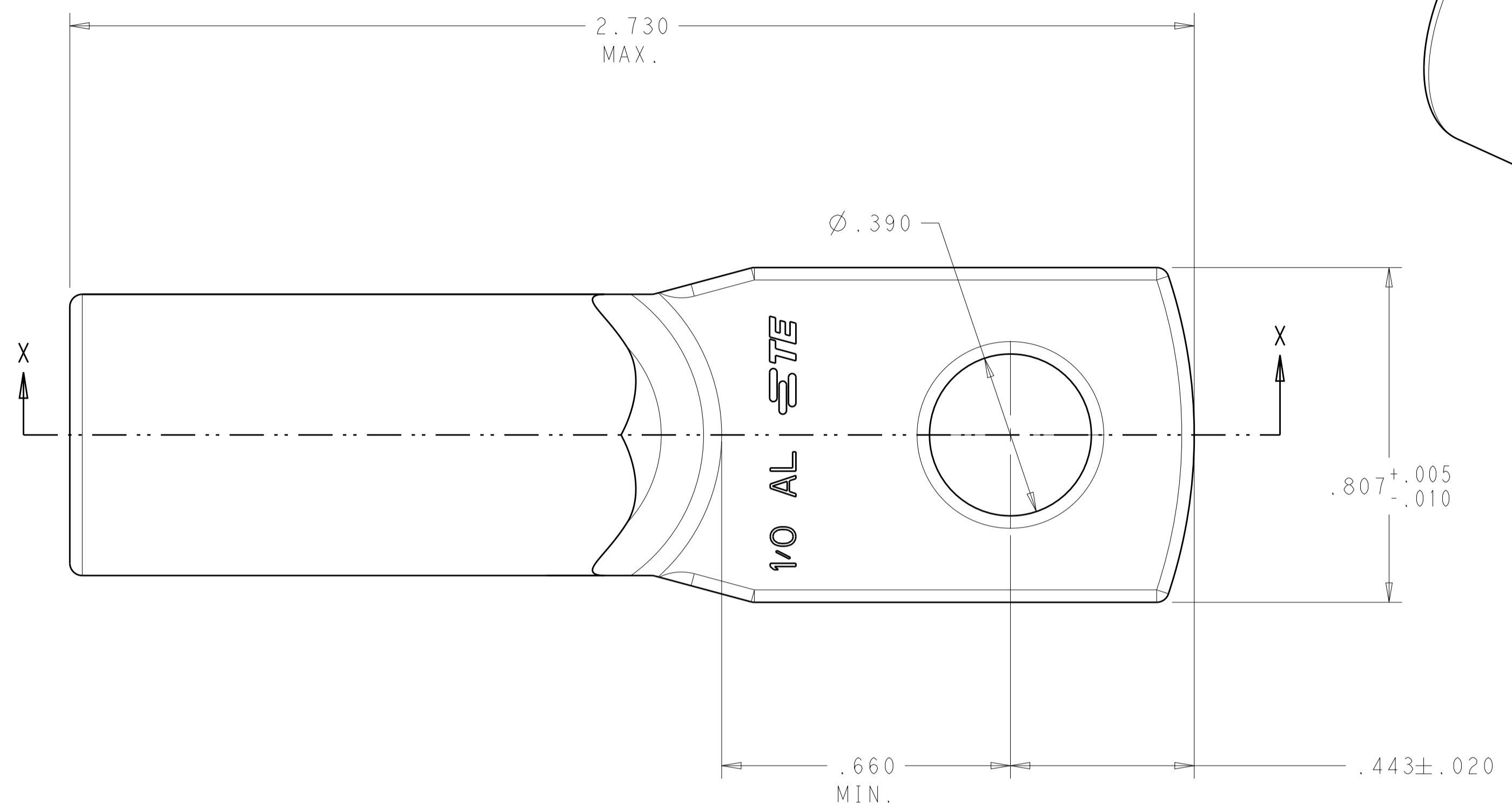


LOC		DIST		REVISIONS			
		P	LTH	DESCRIPTION	DATE	DWN	APVD
		4		REVISED PER ECO-14-011717	28AUG2014	BY	KAD



- MATERIAL:
 BODY: ALUMINUM PER ASTM B317
 INSERT: BRASS PER ASTM B36
- FINISH:
 BODY: .000600 MIN MATTE TIN PER ASTM B545
 OVER .000060 MIN NICKEL PER ASTM B733.
 INSERT: .000150 MIN MATTE NICKEL PER QQ-N-290

2102572-1
 PART
 NUMBER

THIS PRINT IS
PRELIMINARY
 UNQUALIFIED PRODUCT
 CONTACT PRODUCT ENGINEERING
 BEFORE USING THIS PRINT

THIS DRAWING IS A CONTROLLED DOCUMENT.		DWN	D. FABIAN	14NOV2011
DIMENSIONS:		CHK	K. DEROCK	28NOV2012
IN		APVD	K. DEROCK	28NOV2012
TOLERANCES UNLESS OTHERWISE SPECIFIED:		NAME		
0 PLC	±.1	ASSEMBLY, ALUMINUM TERMINAL		
1 PLC	±.01	STRAIGHT, SINGLE HOLE, 1/0		
2 PLC	±.005	PRODUCT SPEC		
3 PLC	±.0005	APPLICATION SPEC		
4 PLC	±.0005	SIZE		
ANGLES	"A1"	CAGE CODE		
MATERIAL	SEE CALL-OUT	DRAWING NO		
FINISH		WEIGHT		
SEE CALL-OUT		21.22GRAMS		
		Customer Drawing		
		SCALE		
		4:1		
		SHEET		
		1 OF 1		
		REV		
		4		