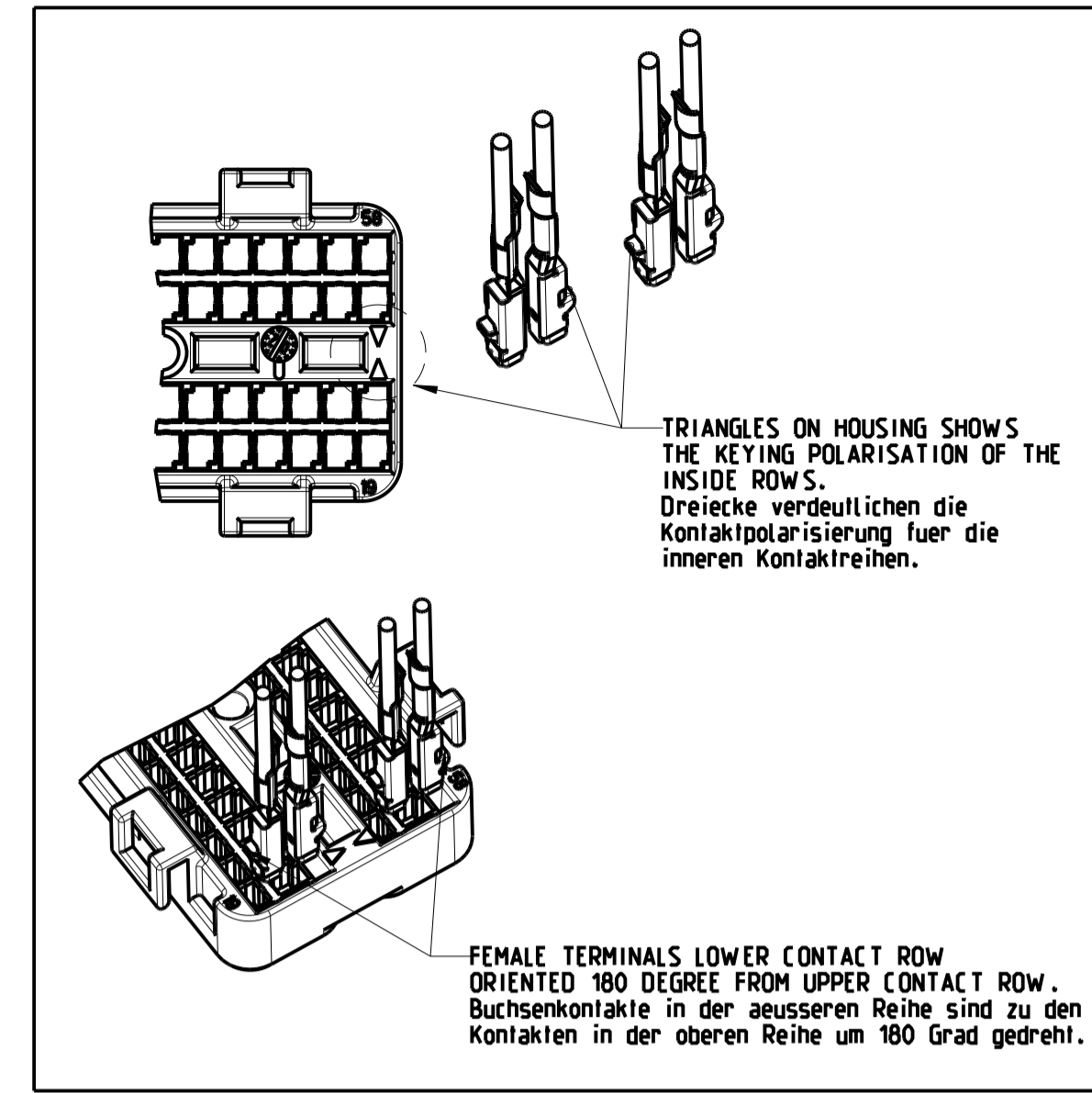
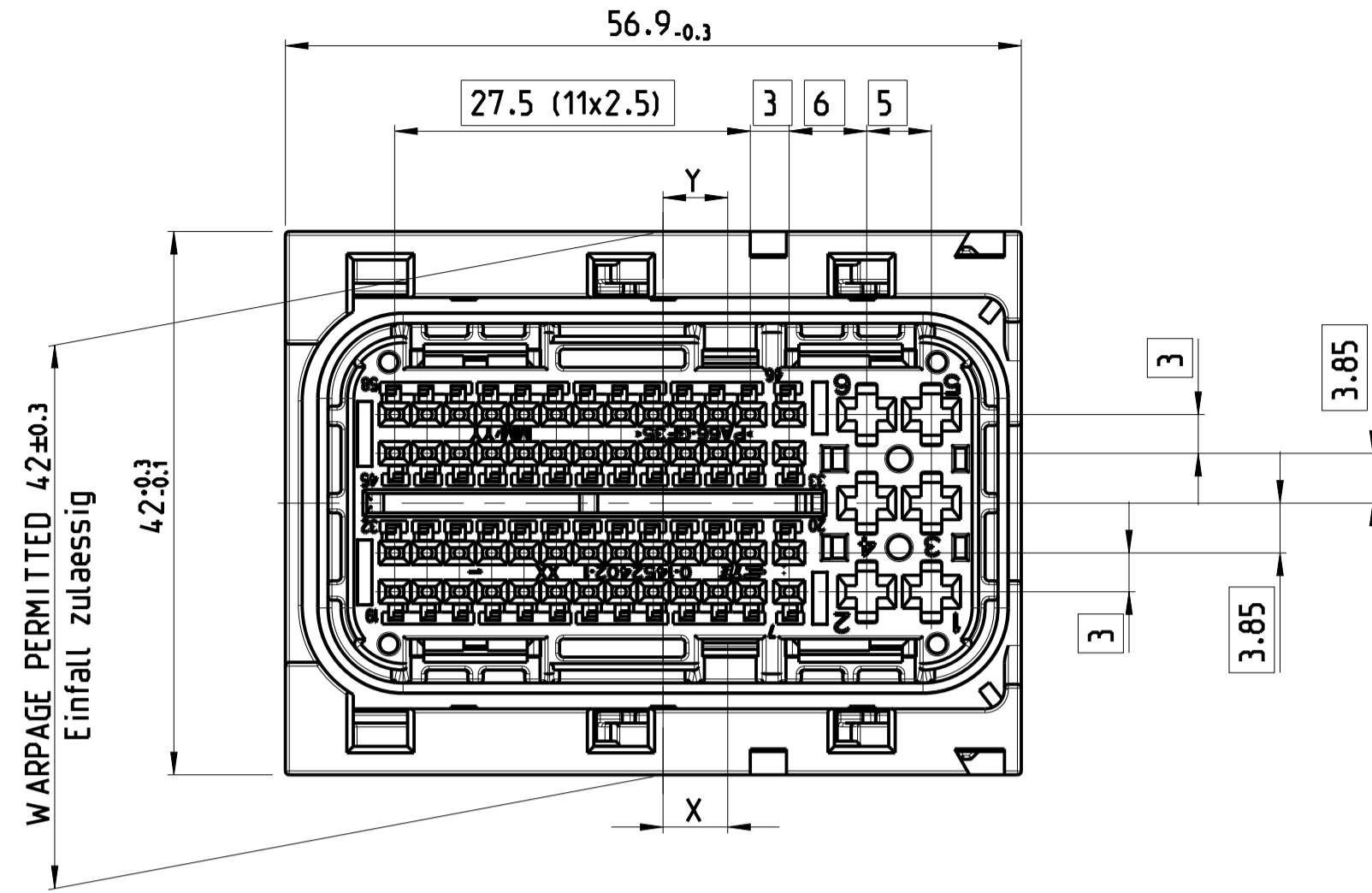


UP TO
0.75 mm²
WIRE SIZE

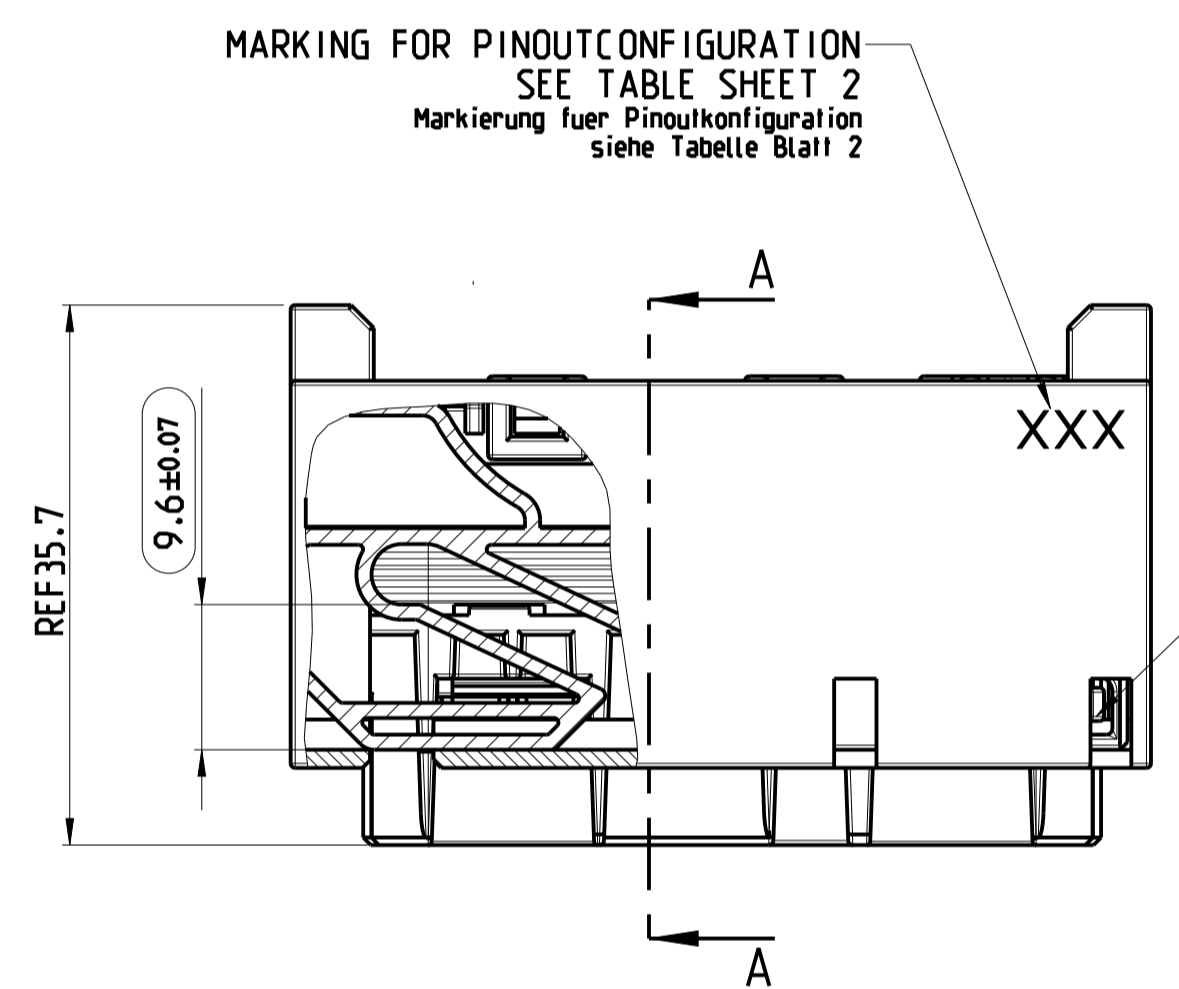
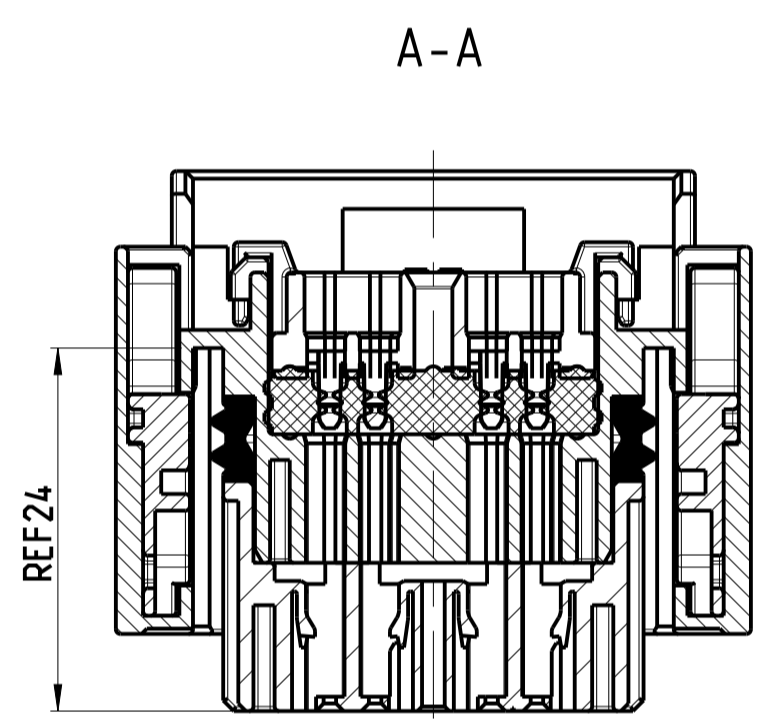
-	-	-
A	5.2	5.2
CODING	X	Y



REVISONS		DATE	BY	APPD
LOC	DIST			
A1	-			
P	LTR	DESCRIPTION		
G19	ECR-11-024746		07DEC2011	SH GM
H	ECR-11-006017		17JAN2012	PT GM
H1	ECR-12-005745		28MAR2012	SH GM
H2	ECR-14-015052		09OCT2014	SS GM

1x	PA66-GF25	50 POS. CON. SLIDE RIGHT	BLACK	7
1x	PA66-GF25	50 POS. CON. SLIDE LEFT	BLACK	6
1x	PBT-GF20	50 POS. CON. COVER FOR FAMILY SEAL	BLACK	5
1x	SILICONE	50 POS. CON. FAMILY SEAL	WHITE	4
1x	SILICONE	50 POS. CON. PERIPHERAL SEAL	WHITE	3
1x	PA66-GF35	50 POS. CON. CONTACT HOUSING	BLACK	2
1x	PA66-GF35	50 POS. CON. FEMALE HOUSING	BLACK	1

X-1452415-X	ASSY NO	MATERIAL	DESCRIPTION	COLOR	ITEM NO
-			WEIGHT OF EACH ASSY NO [g]		
QTY REQD PER ASSY	PARTS LIST				



NOTES:
Bemerkungen

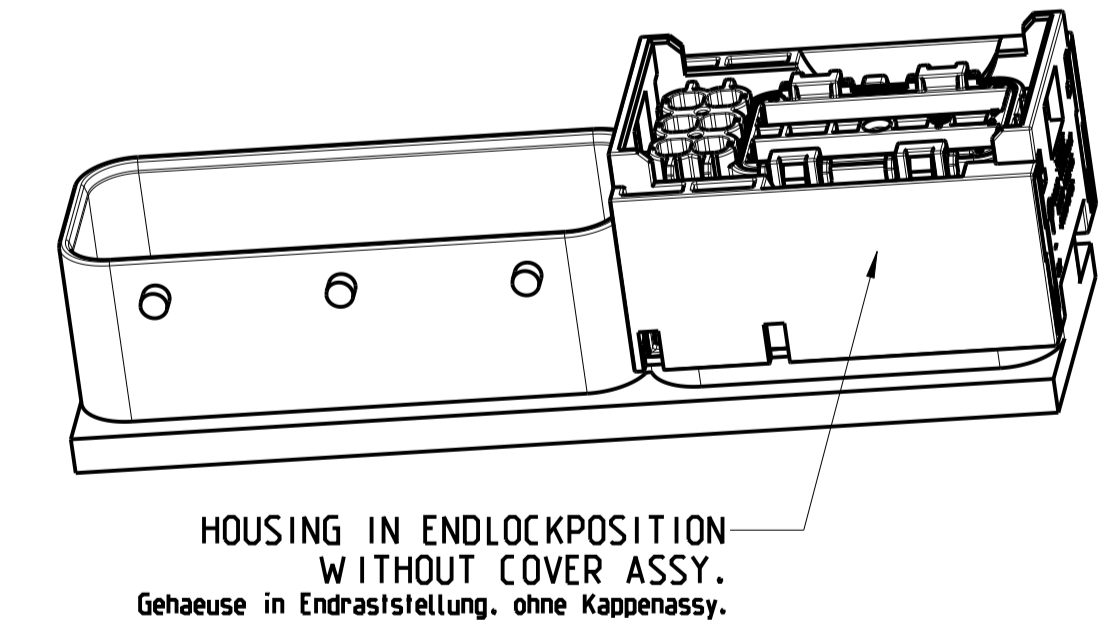
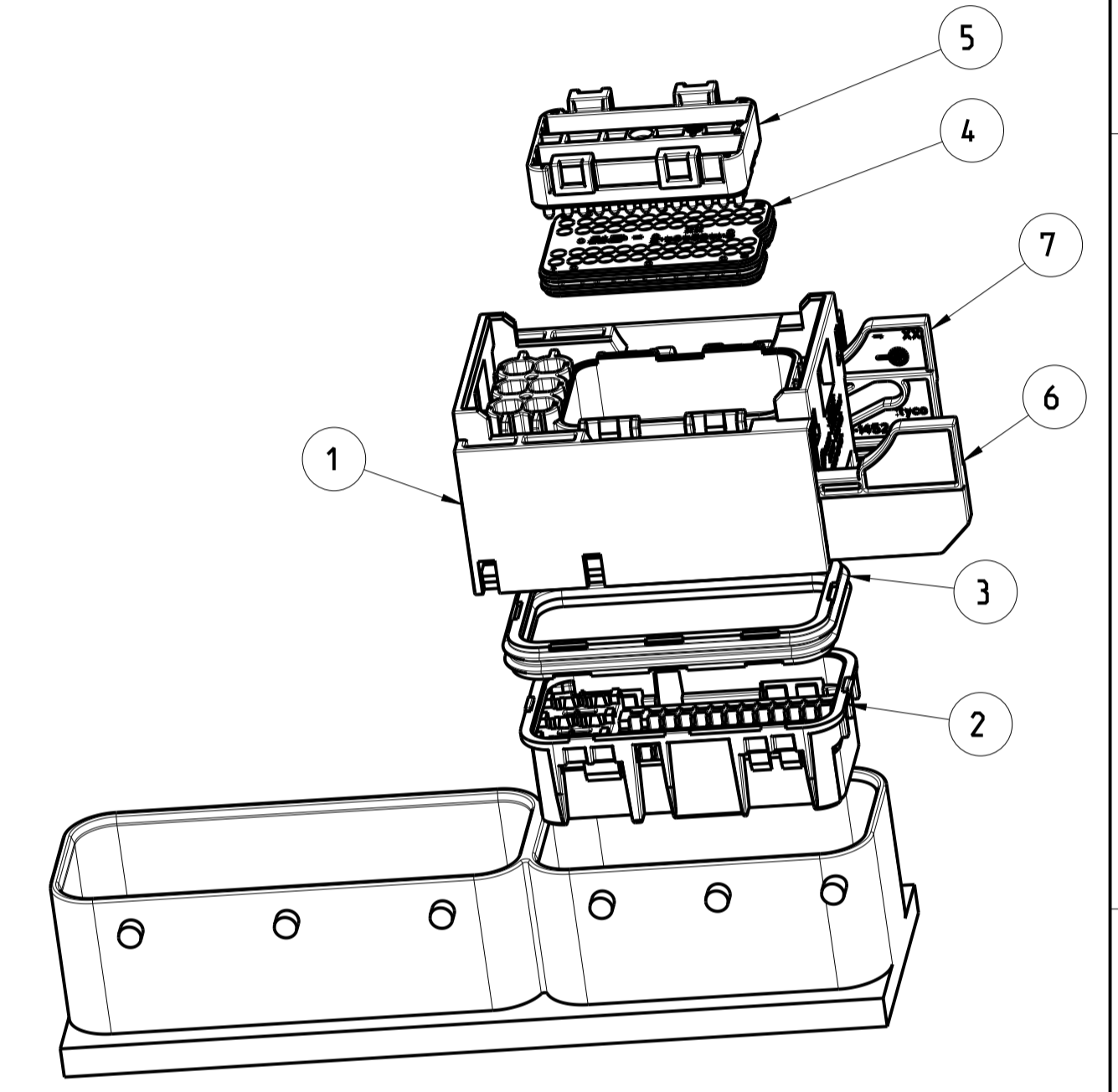
1 ASSY. USED WITH PARTS:
ASSY. verwendet mit folgenden Teilen:
HEADER BOSCH: PN: 000 20633 614
HEADER TE: PN 0-1565428-1

THE HEADER IS NOT A PART OF THE DELIVERED ASSY.
Der Header ist kein Bestandteil der gelieferten ASSY.

2 MATED WITH:
Passend zu:

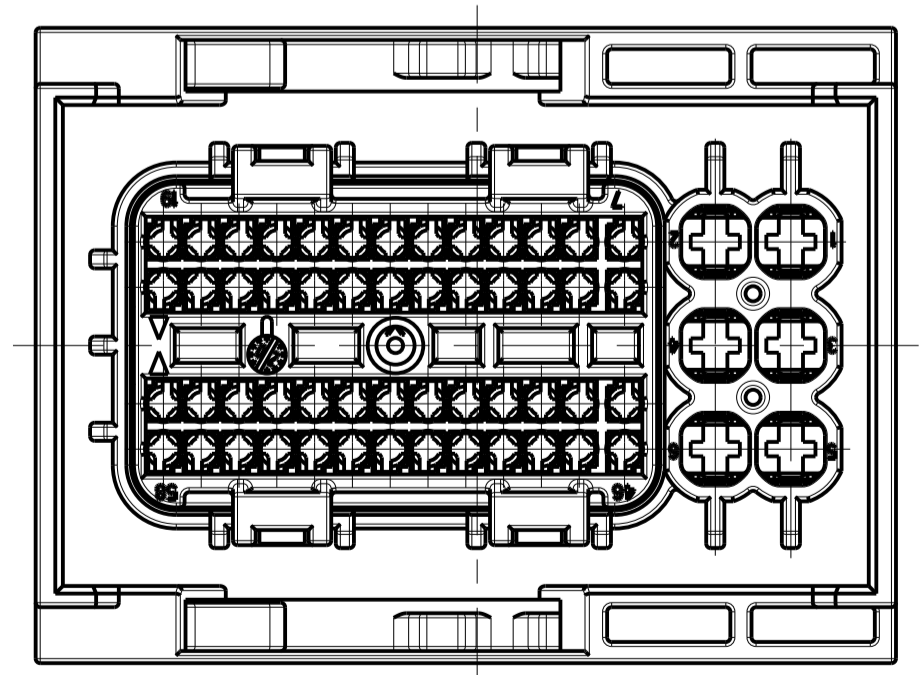
COVER PN: 0-1452416-1
COVER PN: 0-1452421-1
2-NDRY LOCK PN: 0-1452408-1
2-NDRY LOCK PN: 0-1452409-1
Kappe PN: 0-1452416-1
Kappe PN: 0-1452421-1
2te Kontaktsicherung PN: 0-1452408-1
2te Kontaktsicherung PN: 0-1452409-1

3 SEALING FUNCTION REQUIRES ONLY FOLLOWING WIRE SIZE DIAMETERS FOR THE SIGNAL TERMINALS:
Zur Sicherung der Dichtigkeit duerfen nur folgende Drahtquerschnitte bei den Signalkontakten verwendet werden
a) 0.5mm² - 0.75mm² = ISO Ø 1.4-1.9 mm
FOR ALL WITH X MARKED CAVITIES. SEE PINOUT CONFIGURATION TABLE
Fuer alle mit X markierten Felder in der Pinbelegungstabelle
b) 1.0mm² - 1.5mm² = ISO Ø 1.9-2.4mm
FOR ALL WITH NUMBERED CAVITIES. SEE PINOUT CONFIGURATION TABLE
Fuer alle nummerierten Felder in der Pinbelegungstabelle



• 1394897 WILL BE REPLACED DURING NEXT YEAR BY 1670144
• 1394897 wird innerhalb eines Jahres ersetzt durch 1670144

0-1452503-3		1.0 - 1.5		
0-1670144-3	SILVER PLATED	0.5 - 0.75		
0-1534594-3		0.25 - 0.35		
0-1452503-2		1.0 - 1.5		
0-1670144-2	GOLD PLATED	0.5 - 0.75		
0-1534594-2		0.25 - 0.35		
0-1452503-1		1.0 - 1.5		
0-1670144-1	PRE-TIN	0.5 - 0.75		
0-1534594-1		0.25 - 0.35		
1-968857-1		>1.0 - 2.5	0-828905-1 (FOR ISOØ 2.2-3.0)	
1-968855-1	PRE-TIN	0.5 - 1.0	0-828904-1 (FOR ISOØ 1.2-2.1)	
1-968882-1		0.35	0-828904-1 (FOR ISOØ 1.2-2.1)	6
1-968857-3		>1.0 - 2.5	0-828905-1 (FOR ISOØ 2.2-3.0)	
1-968855-3	SILVER PLATED	0.5 - 1.0	0-828904-1 (FOR ISOØ 1.2-2.1)	
1-968882-3		0.35	0-828904-1 (FOR ISOØ 1.2-2.1)	6
TERMINALS TE PN TE Kontakte PN	FINISH Oberflaeche	WIRE SIZE (mm ²) Drahtquerschnitt (mm ²)	SINGLE WIRE SEAL Einzelleiterdichtung	NOTES Bemerkungen



PINOUT CONFIGURATIONS FOR MARKINGS
HIGHER THAN 100 SEE DRAWING 2112778
Pinoutkonfigurationen fuer Markierungen
hoeher als 100 siehe Zeichnung 2112778

THIS DRAWING IS A CONTROLLED DOCUMENT.		DATE 22MAY2002	APPD K.ROTH	CHK S.DENTER	DATE 22MAY2002	TE Connectivity	
DIMENSIONS:	TOLERANCES UNLESS OTHERWISE SPECIFIED:	0 PLC	1 PLC	2 PLC	3 PLC	4 PLC	ANGLES FINISH
mm		±0.1	±0.1	±0.1	±0.1	±0.1	±0.1
MATERIAL							
CUSTOMER DRAWING		SCALE 2:1	SHEET 1 OF 2	REV H2	RESTRICTED TO		

