

2



1

TYCO ELECTRONICS RESERVES THE RIGHT TO AMEND THIS DRAWING AT ANY TIME. USERS SHOULD EVALUATE THE SUITABILITY OF THE PRODUCT FOR THEIR APPLICATION.

REVISIONS

LTR	DESCRIPTION	DATE	APPROVED
N	REVISED PER DCR NO. AD99003	11/05/99	WCG
P	REVISED PER DCR R060314	5/23/06	MPIOZET
P1	REVISED PER RTS# 645141	5/8/12	K. YEE

SOLID:

201M9 08 - 19 B

PRODUCT DESIGNATOR \_\_\_\_\_  
 ORDER NUMBER \_\_\_\_\_  
 FOR CODE 18 DASH MAY BE REPLACED BY \_\_\_\_\_  
 A LETTER (SEE TABLE III OF SCD 218M9XX)  
 MATERIAL (SEE TABLE I) \_\_\_\_\_  
 FINISH (SEE S-CH00-0157-002) \_\_\_\_\_

MODIFICATIONS (OMIT IF NOT REQUIRED)

201M908-19B 20 M R ET N

20 - GROUNDING SCREW (SEE FIGURE 1) \_\_\_\_\_  
 M - STRAIN RELIEF HOLES (SEE FIGURE 2) \_\_\_\_\_  
 R - WITHOUT INTERFACE COMPRESSION RING (SEE FIGURE 6) \_\_\_\_\_  
 ET - EARTH TAG (UK USE ONLY) SEE FIGURE 7 \_\_\_\_\_

OPTIONAL O-RING MATERIAL \_\_\_\_\_  
 (OMIT FOR STANDARD SILICONE, A-A-59588, GRADE 70: S59)  
 C: NEOPRENE PER SAE-AMS3209  
 U: FLOUROSILICONE PER SAE-AS7276, CLASS 1  
 N: NITRILE (BUNA N) PER SAE-AMS3215  
 V: FLUOROCARBON PER SAE-AS7276, CLASS 1

NOTES:

1. -DELETED-
2. FOR ALIGNMENT REQUIREMENTS OF ANGLED BACKSHELLS, REFER TO SHEET 8.

If this document is printed it becomes uncontrolled. Check for the latest revision

Raychem Adapters

CUSTOMER DRAWING

©2012 Tyco Electronics Corporation. All rights reserved.

UNLESS OTHERWISE SPECIFIED  
 DIMENSIONS ARE IN INCHES.  
 METRIC DIMENSIONS ARE  
 IN BRACKETS.

DECIMALS  
 .XXX ± 0.005 [ 0.13 mm ]  
 .XX ± 0.01 [ 0.25 mm ]  
 .X ± 0.1 [ 0.50 mm ]

ANGLES  
 .X ± 0.5 DEG

DRAWN	E. GOLDY	05-12-93
CHECKED	---	---
APPROVED	W.C.GAY	6-30-93
REVISED	MFORONDA	2/24/05

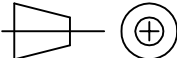


Tyco Electronics Corporation  
 300 Constitution Drive  
 Menlo Park, CA. 94025 U.S.A.

Raychem

TITLE  
 GENERAL INFORMATION PACKAGE  
 FOR SOLID, SPIN COUPLING AND  
 SHIELDED ADAPTERS

THIRD ANGLE  
 PROJECTION



SIZE	CODE IDENT. NO.	DWG. NO.
A	06090	CH00-0250-004

DO NOT SCALE THIS DRAWING

SHEET 1 OF 8

2



1

2



1

SPIN-COUPLING:

**201M1 08 - 19 B**

PRODUCT DESIGNATOR \_\_\_\_\_

ORDER NUMBER \_\_\_\_\_

FOR CODE 18 DASH MAY BE REPLACED BY  
A LETTER (SEE TABLE III OF SCD 218M9XX)

MATERIAL (SEE TABLE I) \_\_\_\_\_

FINISH (SEE S-CH00-0157-002) \_\_\_\_\_

B

B

MODIFICATIONS (OMIT IF NOT REQUIRED)

**201M108-19B D 20 L M ET N**

D - DRAIN HOLES (SEE FIGURE 3) \_\_\_\_\_

20 - GROUNDING SCREW (SEE FIGURE 1) \_\_\_\_\_

L - LOCK WIRE HOLES (SEE FIGURE 4) \_\_\_\_\_

M - STRAIN RELIEF HOLES (SEE FIGURE 2) \_\_\_\_\_

ET - EARTH TAG (UK USE ONLY) SEE FIGURE 7 \_\_\_\_\_

OPTIONAL O-RING MATERIAL \_\_\_\_\_

- (OMIT FOR STANDARD SILICONE, A-A-59588, GRADE 70: S59)
- C: NEOPRENE PER SAE-AMS3209
- U: FLOUROSILICONE PER SAE-AS7276, CLASS 1
- N: NITRILE (BUNA N) PER SAE-AMS3215
- V: FLUOROCARBON PER SAE-AS7276, CLASS 1



A

A

If this document is printed it becomes uncontrolled. Check for the latest revision

Raychem Adapters  
CUSTOMER DRAWING

SIZE	CODE IDENT. NO.	DWG. NO.	REV
A	06090	CH00-0250-004	P1
DO NOT SCALE THIS DRAWING		CAD NAME: R060314B.dwg	SHEET 2 OF 8

2



1

2

1

SHIELDED:

**203M0 08 - 19 B 04**

PRODUCT DESIGNATOR \_\_\_\_\_

ORDER NUMBER \_\_\_\_\_

FOR CODE 18 DASH MAY BE REPLACED BY  
A LETTER (SEE TABLE III OF SCD 218M9XX) \_\_\_\_\_

MATERIAL (SEE TABLE I) \_\_\_\_\_

FINISH (SEE S-CH00-0157-002) \_\_\_\_\_

ENTRY SIZE \_\_\_\_\_

MODIFICATIONS (OMIT IF NOT REQUIRED)

**203M008-19B04 G 12 DS L KNS N**

NAVSEA DESIGNATOR \_\_\_\_\_  
(PARTS TO BE MARKED WITH NAVSEA NUMBER)  
(SHELL SIZEOVER 24 ONLY, CSR REQUIRED)

NON-STANDARD SHIELD LENGTH DESIGNATOR \_\_\_\_\_  
OMIT FOR STANDARD LENGTH, 6 INCHES MINIMUM  
EXAMPLE: 12 INDICATES 12 INCH MINIMUM LENGTH

SHIELD MODIFICATION DESIGNATOR  
OMIT FOR STANDARD SINGLE LAYERED TIN-PLATED COPPER SHIELD

DS - DOUBLE LAYERED TIN-PLATED COPPER \_\_\_\_\_

NB - NO SHIELD, GROUND RING SUPPLIED LOOSE

SI - SINGLE LAYER SILVER-PLATED COPPER

EX - BENTLY HARRIS EXPANDO HR (HALAR)

NS - NO SHIELD, RING MAGNEFORMED TO ADAPTER

NI - SINGLE LAYER NICKEL-PLATED COPPER SHIELD

L - LOCK WIRE HOLES (SEE FIGURE 4) MANUFACTURER'S OPTION \_\_\_\_\_

KNS - MAGNEFORM PROFILE REPLACED BY KNURLED BOOT GROOVE  
FOR UK USE ONLY (SEE FIGURE 8) \_\_\_\_\_

OPTIONAL O-RING MATERIAL \_\_\_\_\_  
(OMIT FOR STANDARD SILICONE, A-A-59588, GRADE 70: S59)

C: NEOPRENE PER SAE-AMS3209

U: FLOUROSILICONE PER SAE-AS7276, CLASS 1

N: NITRILE (BUNA N) PER SAE-AMS3215

V: FLUOROCARBON PER SAE-AS7276, CLASS 1

Y: NO O-RING SUPPLIED

TABLE I: MATERIAL NUMBER CROSS REFERENCE	
NUMBER	DESCRIPTION
01	NICKEL ALUMINUM BRONZE PER ASTM B150
19	ALUMINUM ALLOY PER SAE AMS-QQ-A-225
62	STAINLESS STEEL PER SAE AMS-QQ-S-763

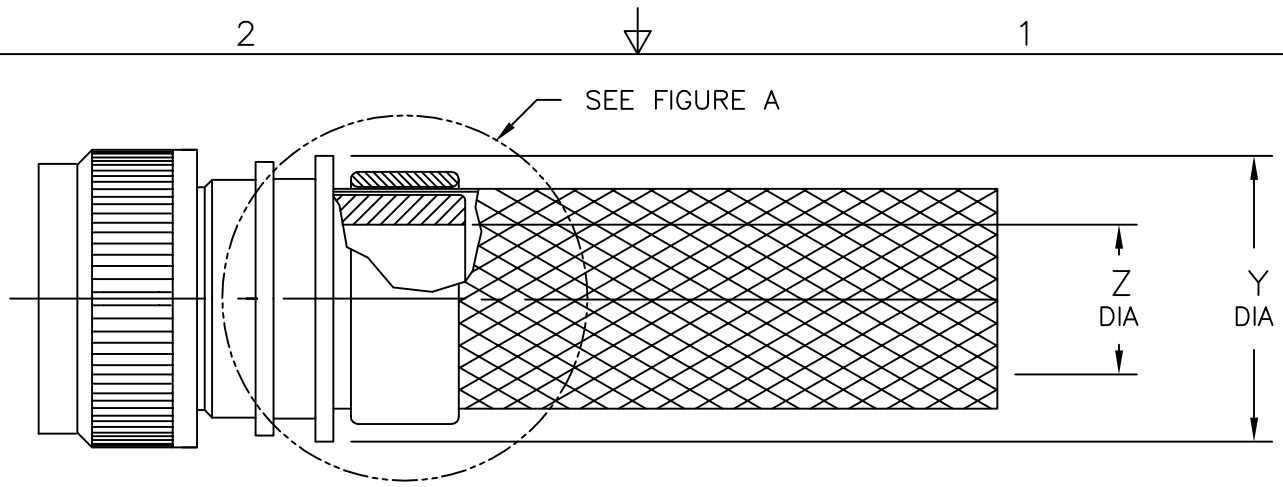
Raychem Adapters  
**CUSTOMER DRAWING**

If this document is printed it becomes uncontrolled. Check for the latest revision

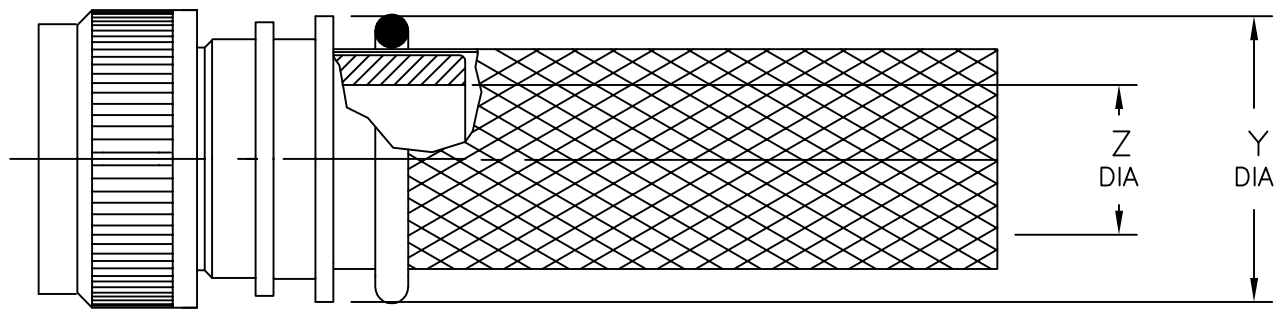
SIZE <b>A</b>	CODE IDENT. NO. <b>06090</b>	DWG. NO. <b>CH00-0250-004</b>	REV <b>P1</b>
DO NOT SCALE THIS DRAWING		CAD NAME: R060314C.dwg	SHEET 3 OF 8

2

1



SHIELDED ADAPTER BACK END



TINEL-LOCK TERMINATION

FIGURE A 1

NOTES:

- 1 BRAID TERMINATION RING MAY BE SUPPLIED AS TINEL-LOCK SHAPE MEMORY RING AT MANUFACTURER'S OPTION, REFER TO CH00-0250-008 SHEET 4 OF 8 FOR DETAILS.

ENTRY SIZE	Z ±.020 [±0.51]		Y MIN	
03	.187	[4.75]	.393	[9.98]
04	.250	[6.35]	.456	[11.58]
05	.312	[7.92]	.515	[13.08]
06	.375	[9.53]	.581	[14.76]
07	.438	[11.13]	.643	[16.33]
08	.500	[12.70]	.705	[17.91]
09	.562	[14.27]	.705	[17.91]
10	.625	[15.88]	.831	[21.11]
11	.688	[17.48]	.893	[22.68]
12	.750	[19.05]	.953	[24.21]
13	.812	[20.62]	.953	[24.21]
14	.875	[22.23]	1.081	[27.46]
15	.938	[23.83]	1.143	[29.03]
16	1.000	[25.40]	1.205	[30.61]
18	1.125	[28.58]	1.381	[35.08]
20	1.250	[31.75]	1.506	[38.25]
22	1.375	[34.93]	1.631	[41.43]
24	1.500	[38.10]	1.756	[44.60]

If this document is printed it becomes uncontrolled. Check for the latest revision

Raychem Adapters  
**CUSTOMER DRAWING**

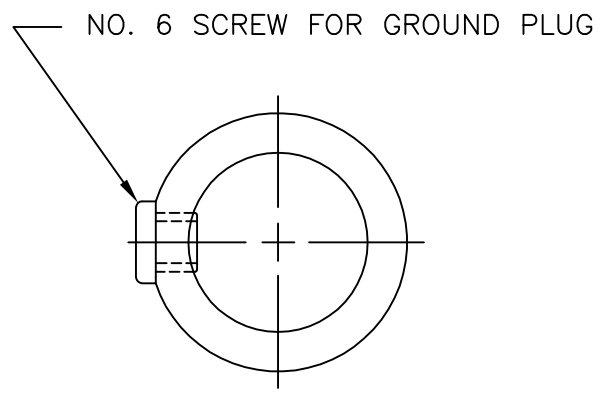
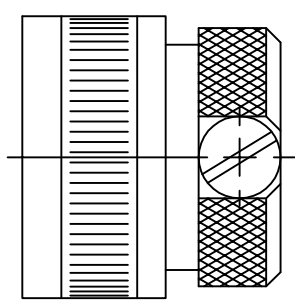
SIZE <b>A</b>	CODE IDENT. NO. <b>06090</b>	DWG. NO. <b>CH00-0250-004</b>	REV <b>P1</b>
DO NOT SCALE THIS DRAWING		CAD NAME: R060314D.dwg	SHEET 4 OF 8

2



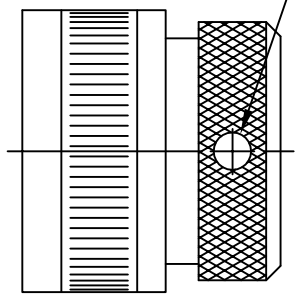
1

FIGURE 1  
GROUNDING SCREW  
(SOLID AND SPIN  
COUPLING ADAPTERS  
ONLY)

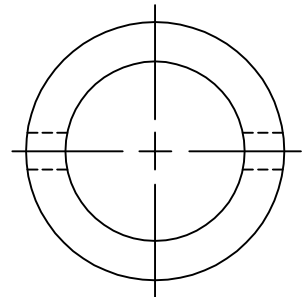


B

FIGURE 2  
STRAIN RELIEF HOLES  
(SOLID AND SPIN COUPLING  
ADAPTERS ONLY)



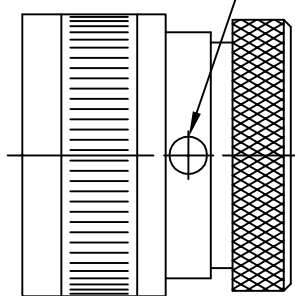
.125 DIA STRAIN RELIEF HOLE  
2 PLACES, 180° APART



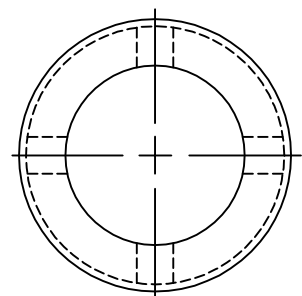
B



FIGURE 3  
DRAIN HOLES  
(SPIN COUPLING  
ADAPTERS ONLY)



.125 DIA DRAIN HOLES  
4 PLACES, 90° APART



A

If this document is printed it becomes uncontrolled. Check for the latest revision

Raychem Adapters  
CUSTOMER DRAWING

SIZE	CODE IDENT. NO.	DWG. NO.	REV
A	06090	CH00-0250-004	P1
DO NOT SCALE THIS DRAWING		CAD NAME: R060314E.dwg	SHEET 5 OF 8

2



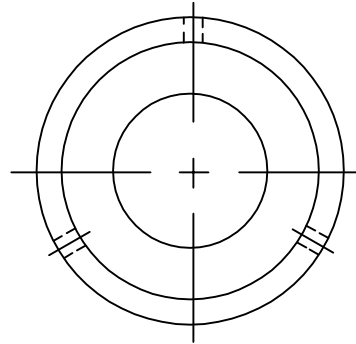
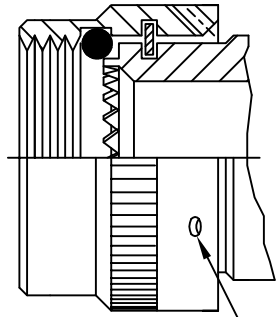
1

2



1

**FIGURE 4**  
LOCK WIRE HOLES  
(SPIN COUPLING AND  
MAGNEFORM ADAPTERS  
ONLY)

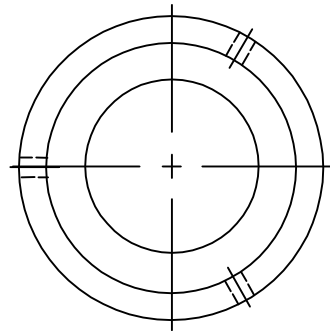
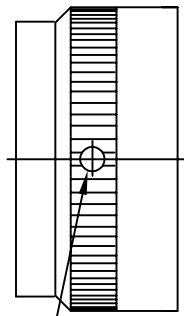


.046±.010 DIA  
LOCK WIRE HOLES  
3 AT 120°±5° APART

B

B

**FIGURE 5**  
SET SCREW  
(SPIN COUPLING AND  
SHIELDED ADAPTERS  
ONLY)



ANTI-ROTATIONAL SET SCREW, 3 THREADED HOLES  
120°±5° APART, SINGLE MATING SET SCREW SUPPLIED

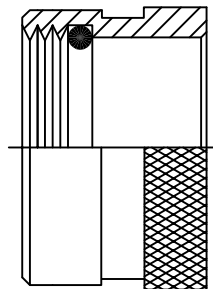
**NOTES:**

- 1. REQUIRED FOR CONNECTOR CODES 15, 18, 19, 32, 21, 51, 52.
- 2. THREE TAPPED HOLES IN COUPLING RING, ONE SET SCREW SUPPLIED.

A

A

**FIGURE 6**  
SOLID ADAPTER  
(WITHOUT INTERFACE  
COMPRESSION RING)



If this document is printed it becomes uncontrolled. Check for the latest revision

Raychem Adapters  
**CUSTOMER DRAWING**

SIZE	CODE IDENT. NO.	DWG. NO.	REV
A	06090	<b>CH00-0250-004</b>	P1
DO NOT SCALE THIS DRAWING		CAD NAME: R060314F.dwg	SHEET 6 OF 8

2



1

2

1

ROSS COURTNEY TAG  
NO. 164 (.075±.005 [1,9±0,13])

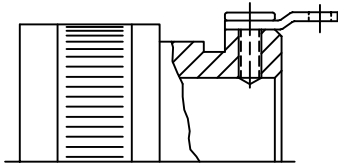
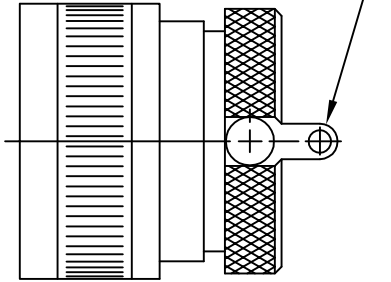


FIGURE 7  
"ET" MODIFICATION

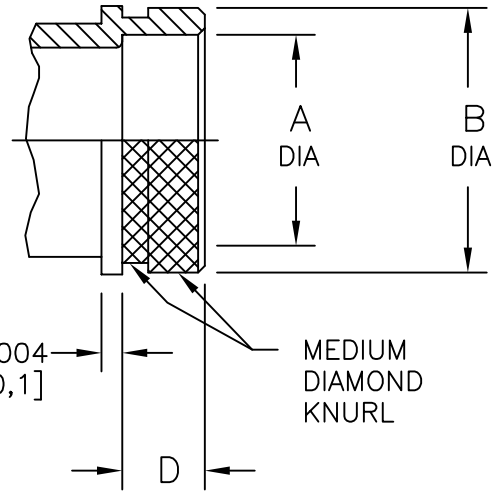


FIGURE 8  
"KNS" MODIFICATION

ENTRY SIZE	∅A ±.004 [±0,1]	∅B MAX	D ±.004 [±0,1]
03, 04	.252 [6,4]	.472 [12,0]	.472 [12,00]
05, 06	.374 [9,5]	.610 [15,5]	.472 [12,00]
07, 08, 09	.563 [14,3]	.787 [20,0]	.413 [10,50]
10, 11, 12	.748 [19,0]	.965 [24,5]	.512 [13,00]
13, 14, 15	.937 [23,8]	1.220 [31,0]	.591 [15,00]
16, 18, 20	1.252 [31,8]	1.516 [38,5]	.669 [17,00]
22, 24	1.614 [41,0]	1.909 [48,5]	.807 [20,5]

Raychem Adapters  
CUSTOMER DRAWING

If this document is printed it becomes uncontrolled. Check for the latest revision

SIZE A	CODE IDENT. NO. 06090	DWG. NO. CH00-0250-004	REV P1
DO NOT SCALE THIS DRAWING		CAD NAME: R060314G.dwg	SHEET 7 OF 8

2

1

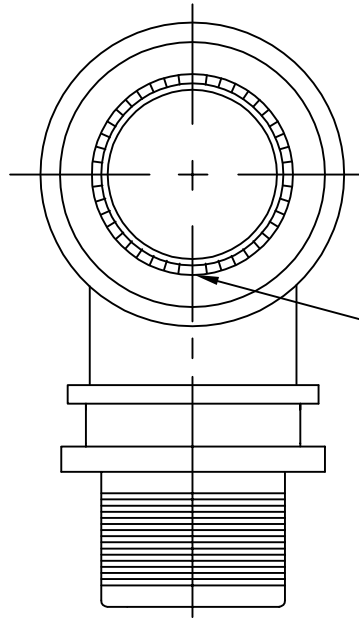
2

1

### ALIGNMENT REQUIREMENT

FIGURE 9

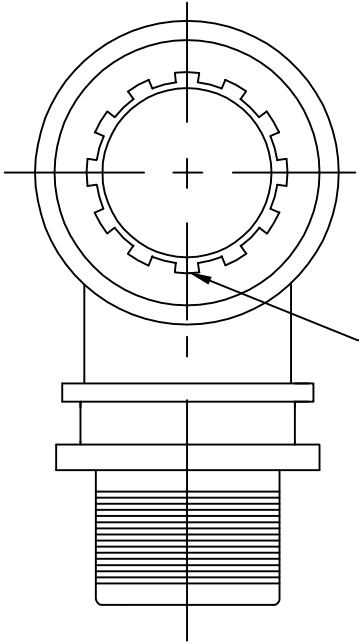
APPLIES TO CODES  
54, 40 AND 41



⌀ OF ENTRY ALIGNED  
WITH BOTTOM OF TEETH ON  
VERTICAL C [WITHIN ±2°

FIGURE 10

APPLIES TO CODES  
61 AND 30



⌀ OF ENTRY ALIGNED WITH  
⌀ OF BOTTOM OF SPLINE GROOVES  
ON VERTICAL C [WITHIN ±2°

**NOTES:**

- 1. 90° CONFIGURATION DEPICTED. THIS REQUIREMENT WILL APPLY TO ANY ANGULAR CONFIGURATION.

*If this document is printed it becomes uncontrolled. Check for the latest revision*

Raychem Adapters  
**CUSTOMER DRAWING**

SIZE	CODE IDENT. NO.	DWG. NO.	REV
A	06090	<b>CH00-0250-004</b>	P1
DO NOT SCALE THIS DRAWING		CAD NAME: R060314H.dwg	SHEET 8 OF 8

2

1