

REV	MCO	DWN	DATE
W	40016881MCO	EAAE	17-SEP-14
Y	40018263MCO	LLBV	01-DEC-14

INSTALLATION INSTRUCTIONS:
(SEE SHEET 2 OF 2 FOR ASSEMBLY DETAILS)

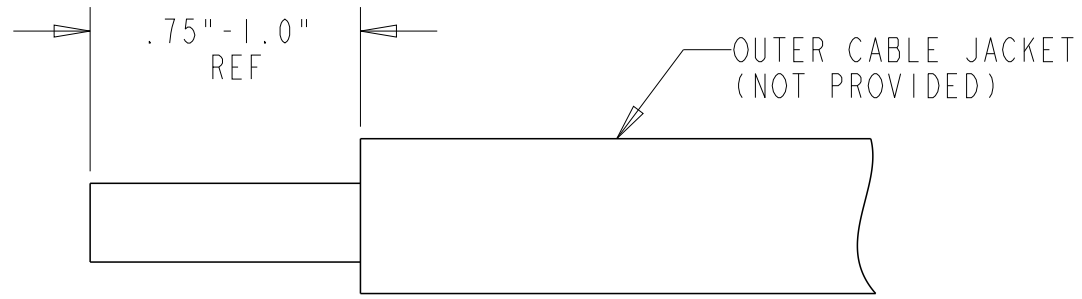
1. STRIP OUTER CABLE JACKET TO EXPOSE INNER CENTRAL TUBE .75" - 1.0" SEE DETAIL "A".
2. *IMPORTANT* CLEAN RESIDUE FROM OUTSIDE OF CENTRAL TUBE, THIS WILL PREVENT SLIPPAGE WHEN BASE IS ATTACHED (DO NOT USE ALCOHOL PACKETS PROVIDED). PLACE BLACK STRIP TAPE PROVIDED AROUND ENTIRE CENTRAL TUBE AS SHOWN IN DETAIL "B". LOCATE SO THAT CABLE TIES WILL COVER TAPE SURFACE WHEN ATTACHED TO BASE.
3. CUT OVAL PROTECTIVE TUBES TO THE APPROPRIATE LENGTH.
4. THOROUGHLY CLEAN EACH RIBBON FIBER (DO NOT USE ALCOHOL PACKETS PROVIDED) INSERT UP TO (6) 12-FIBER RIBBONS INTO EACH PROTECTIVE TUBE. SEE DETAIL "B". USE ALCOHOL WIPE (1) PER PROTECTIVE TUBE TO LUBRICATE THE TOP AND BOTTOM RIBBON FIBERS WHEN INSERTING INTO PROTECTIVE TUBE. NOTE TOP AND BOTTOM RIBBON FIBERS SHOULD BE MOIST WITH ALCOHOL WHEN INSERTING INTO PROTECTIVE TUBES.
5. AFTER INSERTING ALL RIBBON FIBERS INTO PROTECTIVE TUBES PLACE FACE PLATE IN BASE POCKET AS SHOWN IN DETAIL "C". ALSO CAREFULLY PLACE CENTRAL TUBE INTO BASE AS SHOWN IN DETAIL "D" DO NOT TWIST FIBERS.
6. ATTACH CENTRAL TUBE TO BASE USING CABLE TIE (2) PROVIDED. INSERT CABLE TIE FROM BOTTOM INTO EACH HOLE AROUND CENTRAL TUBE AND INTO ADJACENT HOLE. CABLE TIE HEAD TO SEAT IN BASE POCKET (BOTTOM) SEE DETAIL "D".
7. OPTIONAL STEP: NUMBER TUBES WITH LABELS PROVIDED.
8. ATTACH COVER WITH (2) 4-24 SCREWS PROVIDED SEE DETAIL "E".

BLK-RIFC-A04E0	1 EACH	1 EACH	1 EACH	2 EACH	2 EACH	4 PACKETS	N/A
BLK-RIFC-A06C0	1 EACH	1 EACH	1 EACH	2 EACH	2 EACH	6 PACKETS	N/A
BLK-RIFC-A01D0	1 EACH	1 EACH	1 EACH	2 EACH	2 EACH	1 PACKET	N/A
BLK-RIFC-A02D0	1 EACH	1 EACH	1 EACH	2 EACH	2 EACH	2 PACKETS	N/A
BLK-RIFC-A04D0	1 EACH	1 EACH	1 EACH	2 EACH	2 EACH	4 PACKETS	N/A
BLK-RIFC-A03E0	1 EACH	1 EACH	1 EACH	2 EACH	2 EACH	3 PACKETS	N/A
BLK-RIFC-A03CC	1 EACH	1 EACH	1 EACH	2 EACH	2 EACH	3 PACKETS	1 EACH
BLK-RIFC-A01B0-NG3	1 EACH	1 EACH	1 EACH	2 EACH	2 EACH	1 PACKETS	N/A
BLK-RIFC-A03B0	1 EACH	1 EACH	1 EACH	2 EACH	2 EACH	3 PACKETS	N/A
BLK-RIFC-A01C0	1 EACH	1 EACH	1 EACH	2 EACH	2 EACH	1 PACKETS	N/A
BLK-RIFC-A06B0	1 EACH	1 EACH	1 EACH	2 EACH	2 EACH	6 PACKETS	N/A
BLK-RIFC-A06BC	1 EACH	1 EACH	1 EACH	2 EACH	2 EACH	6 PACKETS	1 EACH
BLK-RIFC-A04B0	1 EACH	1 EACH	1 EACH	2 EACH	2 EACH	4 PACKETS	N/A
BLK-RIFC-A04C0	1 EACH	1 EACH	1 EACH	2 EACH	2 EACH	4 PACKETS	N/A
BLK-RIFC-A03C0	1 EACH	1 EACH	1 EACH	2 EACH	2 EACH	3 PACKETS	N/A
BLK-RIFC-A03BC	1 EACH	1 EACH	1 EACH	2 EACH	2 EACH	3 PACKETS	1 EACH
BLK-RIFC-A02CC	1 EACH	1 EACH	1 EACH	2 EACH	2 EACH	2 PACKETS	1 EACH
BLK-RIFC-A02C0	1 EACH	1 EACH	1 EACH	2 EACH	2 EACH	2 PACKETS	N/A
BLK-RIFC-A02BC	1 EACH	1 EACH	1 EACH	2 EACH	2 EACH	2 PACKETS	1 EACH
BLK-RIFC-A02B0	1 EACH	1 EACH	1 EACH	2 EACH	2 EACH	2 PACKETS	N/A
BLK-RIFC-A01B0	1 EACH	1 EACH	1 EACH	2 EACH	2 EACH	1 PACKETS	N/A
CATALOG NUMBER	BASE	COVER	FACE PLATE WITH TUBES	#4 SCREW	CABLE TIES	ALCOHOL WIPES	SCORING TOOL

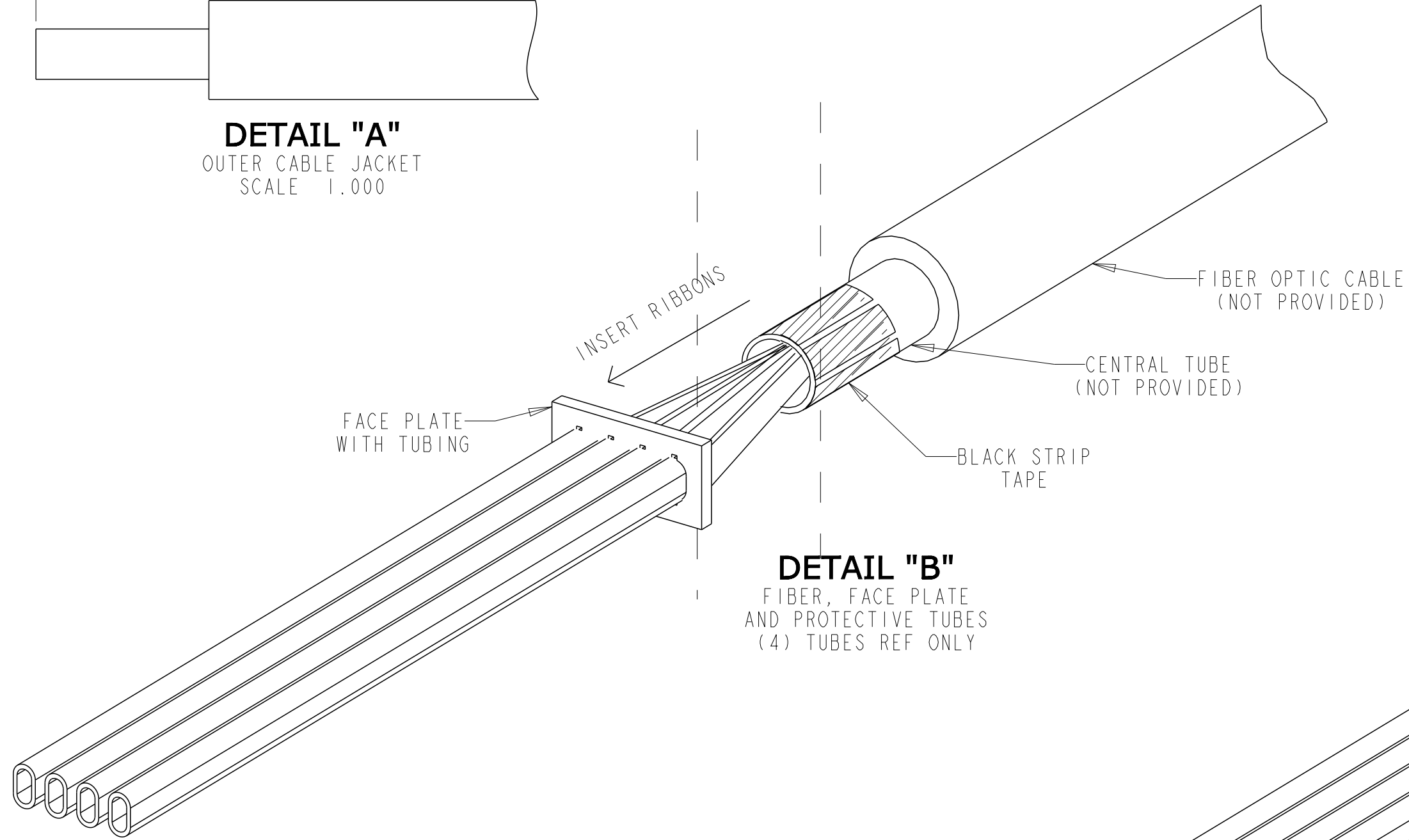


INFORMATION ON THIS DOCUMENT IS PROPRIETARY TO TE CONNECTIVITY AND SHALL NOT BE USED, COPIED, REPRODUCED OR DISCLOSED IN WHOLE OR IN PART WITHOUT WRITTEN CONSENT OF TE CONNECTIVITY.		TITLE IFC RIBBON BLOCKING KIT, INSTALLATION DRAWING	
ALL DIMS AND TOLERANCES ARE INCHES UNLESS OTHERWISE SPECIFIED	.XX:±REF .XXX:±REF ANGULAR:±N/A	C SIZE	DRAWING NUMBER 1135605_ADC
DO NOT SCALE DRAWING		ENGR: S KOWALCZYK DWN: JON SWANSON	Y REV SHT. 1 OF 2

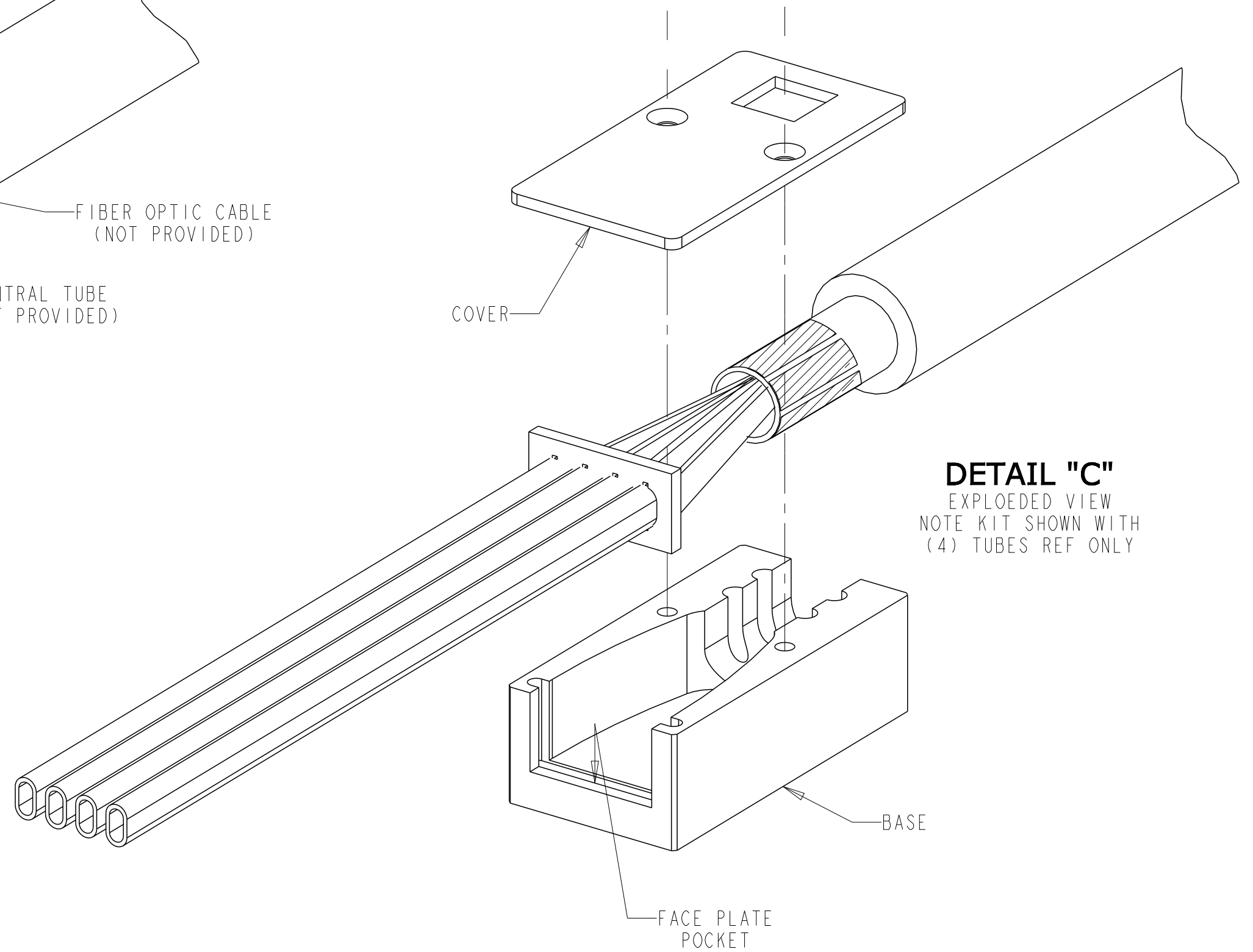
DIMENSIONS IN INCHES
THIRD ANGLE PROJECTION



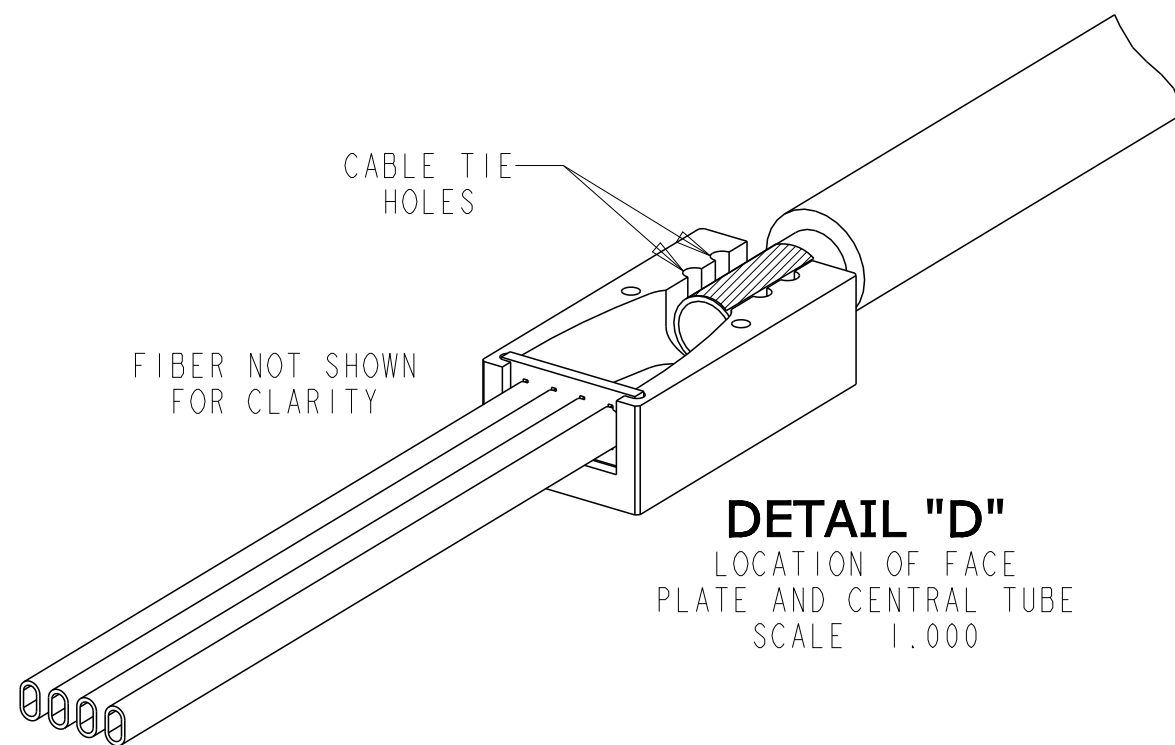
DETAIL "A"
OUTER CABLE JACKET
SCALE 1.000



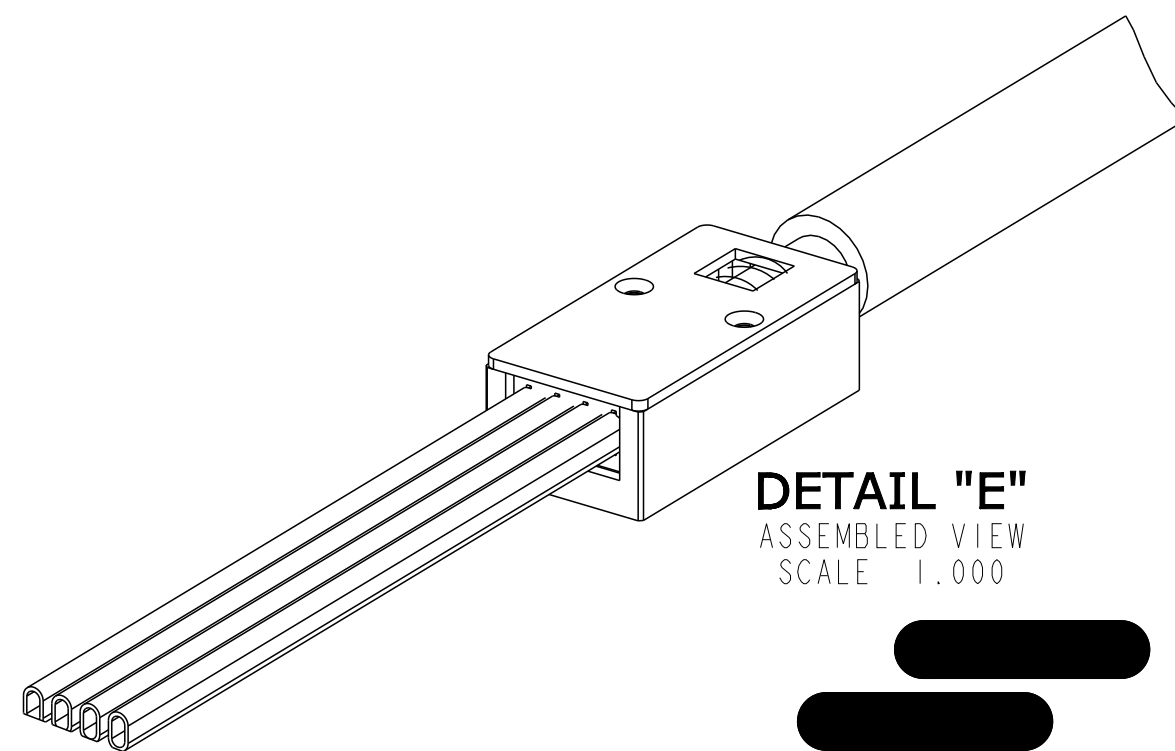
DETAIL "B"
FIBER, FACE PLATE
AND PROTECTIVE TUBES
(4) TUBES REF ONLY



DETAIL "C"
EXPLODED VIEW
NOTE KIT SHOWN WITH
(4) TUBES REF ONLY



DETAIL "D"
LOCATION OF FACE
PLATE AND CENTRAL TUBE
SCALE 1.000



DETAIL "E"
ASSEMBLED VIEW
SCALE 1.000



INFORMATION ON THIS DOCUMENT IS PROPRIETARY TO TE CONNECTIVITY AND SHALL NOT BE USED, COPIED, REPRODUCED OR DISCLOSED IN WHOLE OR IN PART WITHOUT WRITTEN CONSENT OF TE CONNECTIVITY.

ALL DIMS AND TOLERANCES ARE INCHES UNLESS OTHERWISE SPECIFIED

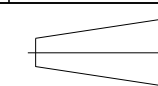
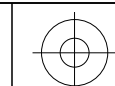
DO NOT SCALE DRAWING

TITLE IFC RIBBON BLOCKING INSTALLATION DRAWING

DRAWING NUMBER 1135605_ADC

ENGR: S KOWALCZYK
DWN: JON SWANSON

SHT. 2 OF 2



**DIMENSIONS IN INCHES
THIRD ANGLE PROJECTION**