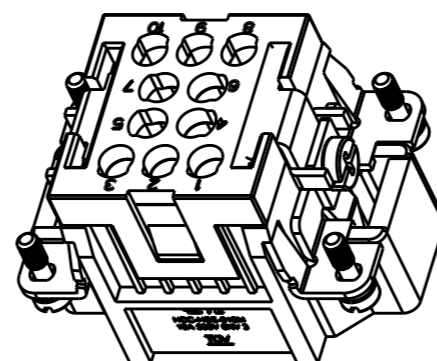
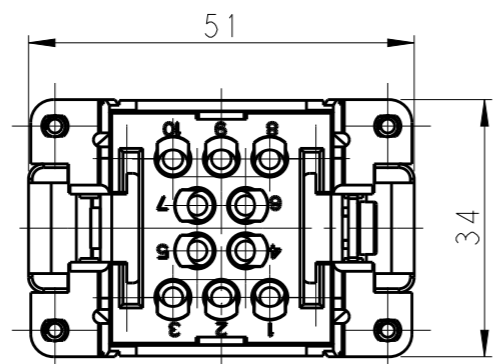


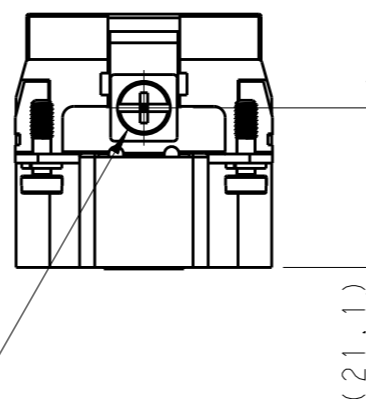
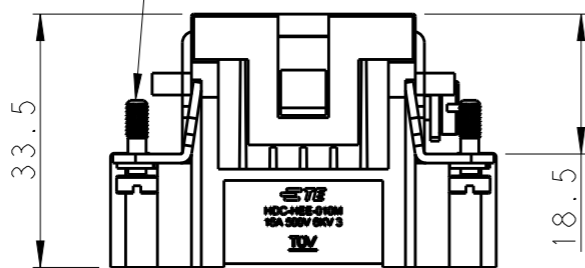
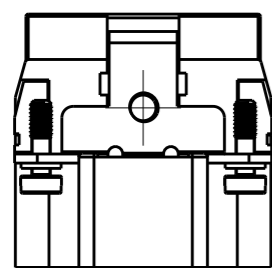
THIS DRAWING IS UNPUBLISHED. RELEASED FOR PUBLICATION 20  
© COPYRIGHT 20 BY - ALL RIGHTS RESERVED.

REVISIONS

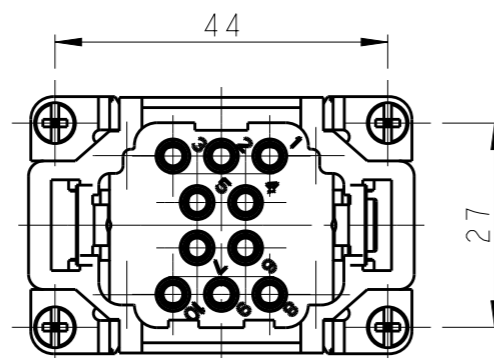
P	LTR	DESCRIPTION	DATE	DWN	APVD
	A	INITIAL RELEASE	09MAR2015	DL	CW



4 X M3 THREAD  
RECOMMENDED TIGHTENING TORQUE 0.5Nm



M4 THREAD  
RECOMMENDED TIGHTENING TORQUE 1.2Nm

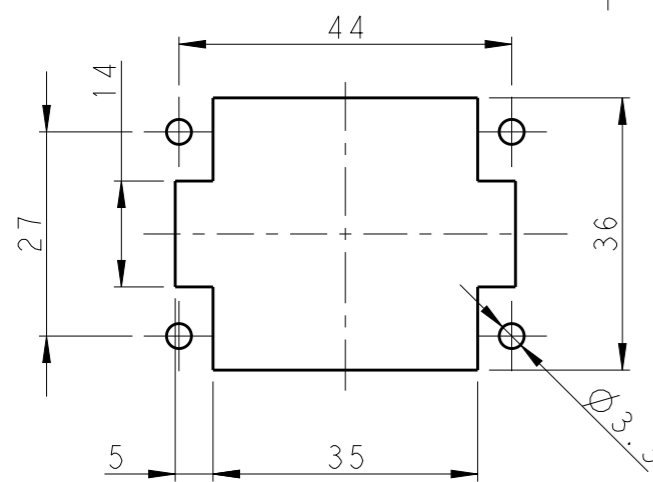


NOTES:

- TECHNICAL CHARACTERISTICS:  
 INSULATION MATERIAL: PC  
 RATED VOLTAGE: 500 V  
 RATED CURRENT: 16 A  
 INSULATION RESISTANCE:  $\geq 400M\Omega$   
 RATED IMPULSE VOLTAGE: 6 KV  
 POLLUTION DEGREE: 3  
 FLAMMABILITY: UL94V-0  
 MATING CYCLES: 200 FOR SILVER PLATED  
 500 FOR GOLD PLATED  
 OPERATION TEMPERATURE:  $-40+125^{\circ}C$   
 WIRE RANGE: 0.14-4 mm<sup>2</sup> (26-12 AWG)  
 CONTACT TYPE: CRIMP CONTACT
- CONTACT NEED TO BE ORDERED SEPARATELY.  
 (ORDER No. T20300X10XX-000)

注释:

- 技术参数:  
 绝缘材料: PC  
 额定电压: 500V  
 额定电流: 16A  
 绝缘电阻:  $\geq 400M\Omega$   
 额定脉冲电压: 6 KV  
 污染等级: 3  
 阻燃等级: UL94V-0  
 插拔次数: 镀银端子: 200次  
 镀金端子: 500次  
 工作温度:  $-40+125^{\circ}C$   
 接线范围: 0.14-4 mm<sup>2</sup> (26-12 AWG)  
 接线类型: 冷压接
- 端子需要单独订购。  
 (订货号 T20300X10XX-000)



PANEL CUT OUT FOR INSERTS FOR USING WITHOUT HOODS/HOUSINGS

THIS DRAWING IS A CONTROLLED DOCUMENT.

DIMENSIONS:	TOLERANCES UNLESS OTHERWISE SPECIFIED:
mm	
	0 PLC ±-
	1 PLC ±-
	2 PLC ±-
	3 PLC ±-
	4 PLC ±-
	ANGLES ±-
MATERIAL	FINISH
-	-
-	-

DWN	DAVID LI	09MAR2015
CHK	CHRIS WANG	09MAR2015
APVD	XU XIANG	09MAR2015
PRODUCT SPEC	108-106137	
APPLICATION SPEC	114-106137	
WEIGHT	-	
Customer Drawing		

HEE-010-M		T2050102101-000	
DESCRIPTION		PART NUMBER	
<b>STE</b> TE Connectivity			
NAME HEE-010-M			
SIZE	CAGE CODE	DRAWING NO	RESTRICTED TO
A3	-	©-T2050102101000	-
SCALE		SHEET	REV
1:1		1 OF 1	A