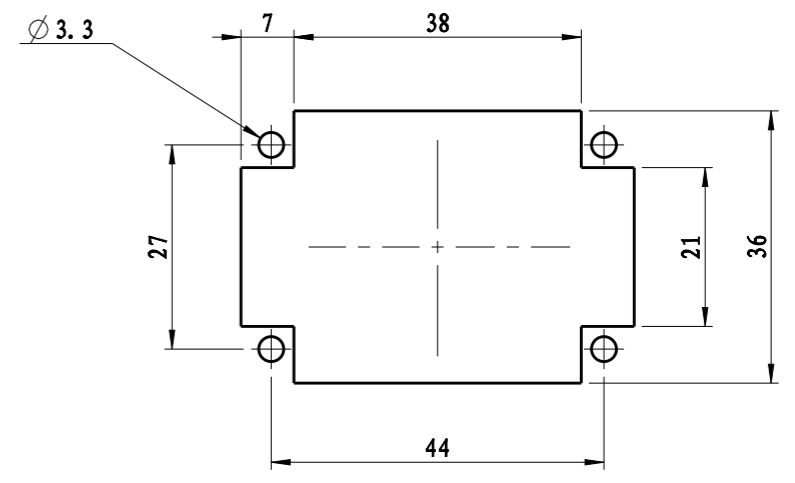
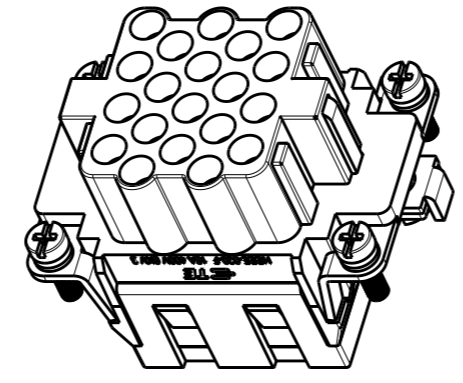
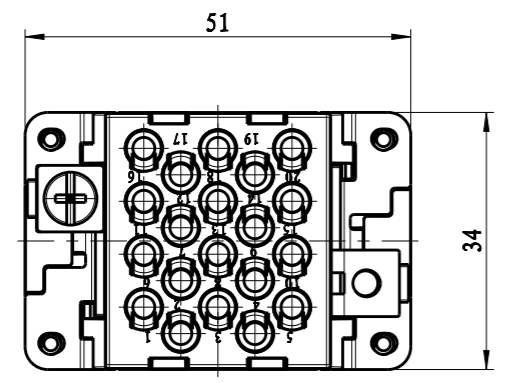
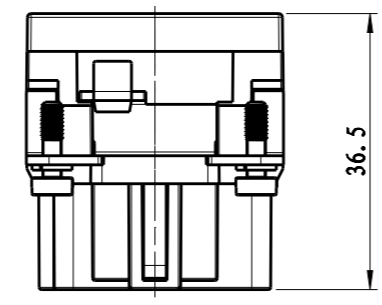
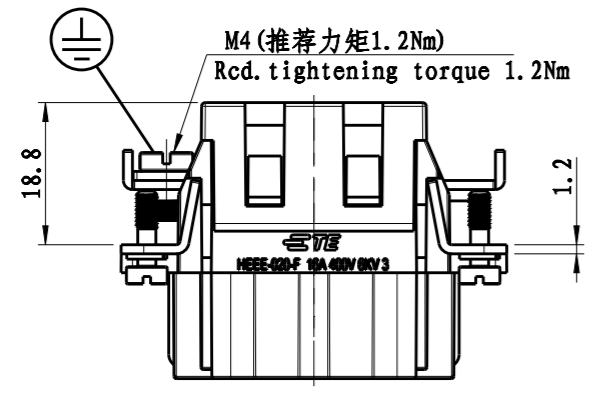


THIS DRAWING IS UNPUBLISHED. RELEASED FOR PUBLICATION 20
 © COPYRIGHT 20 BY - ALL RIGHTS RESERVED.

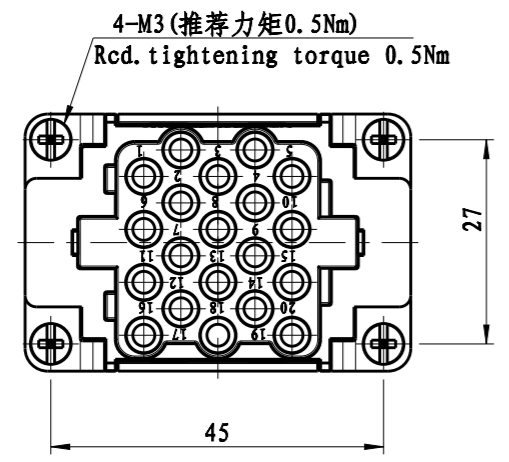
LOC	DIST	REVISIONS					
		P	LTR	DESCRIPTION	DATE	DWN	APVD
-	-		A	INITIAL RELEASE	18DEC2014	HMR	CW



不使用防护外壳时芯件的安装开孔图
 Panel cut out for inserts for use without hoods/housings



- Technical Characteristics/技术参数:**
- Rated Voltage / 额定电压: 400V
 - Rated Current / 额定电流: 16A
 - Insulation R. / 绝缘电阻: >400MΩ
 - Impulse Volt. / 最高耐压: 6kV
 - Pollution deg. / 污染等级: 3(C)
 - Flammability / 阻燃等级: V0 (UL94)
 - Limiting Temp. / 工作温度: -40~125°C
 - Mating Cycles / 插拔次数: 200次 for silver plated contact
500次 for gold plated contact
 - Wire Range / 接线范围: 0.14-4.0mm², 26-12AWG
 - Terminal type / 接线类型: Crimp contact 冷压接
 - Contact need to be ordered separately
(order No. refer to drawing T20300X20XX000)
端子需要单独订购(订货号参照图面: T20300X20XX000)



HEEE-020-F	T2050202201-000
DESCRIPTION	PART NUMBER

THIS DRAWING IS A CONTROLLED DOCUMENT.		DWN	18DEC2014	 TE Connectivity	NAME	HEEE-020-F			
		CHK	18DEC2014						
		APVD	18DEC2014						
		PRODUCT SPEC	108-137068						
DIMENSIONS:		TOLERANCES UNLESS OTHERWISE SPECIFIED:		APPLICATION SPEC					
mm				-					
		0 PLC	±	SIZE					
		1 PLC	±	A3					
		2 PLC	±	CAGE CODE					
		3 PLC	±	00779					
		4 PLC	±	DRAWING NO					
		ANGLES	±	G-T2050202201000					
MATERIAL		FINISH	-	RESTRICTED TO					
-				-					
Customer Drawing				SCALE	1:1	SHEET	1 OF 1	REV	A