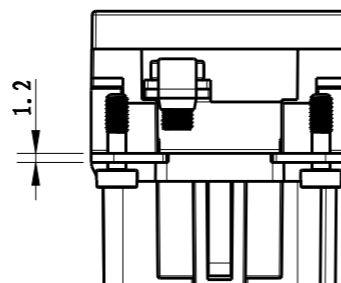
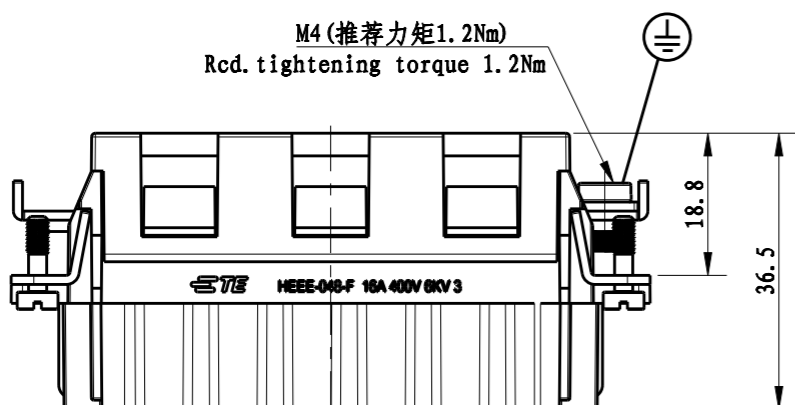
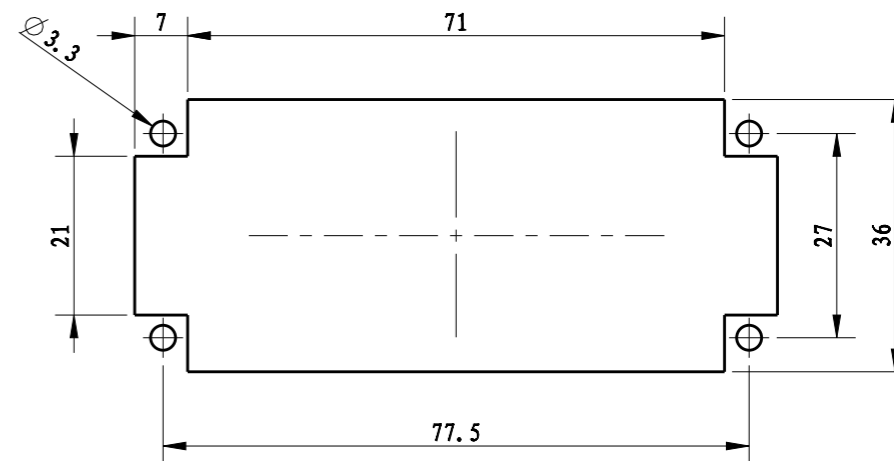
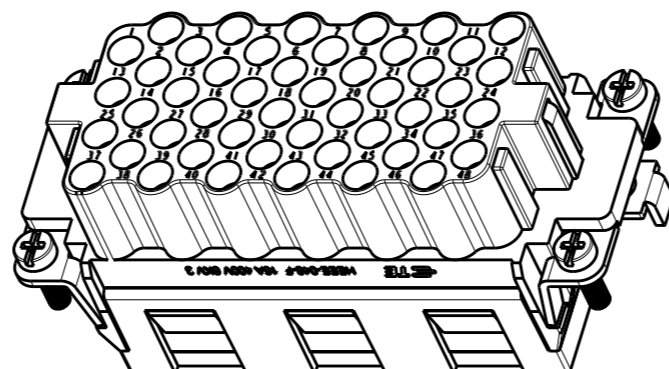
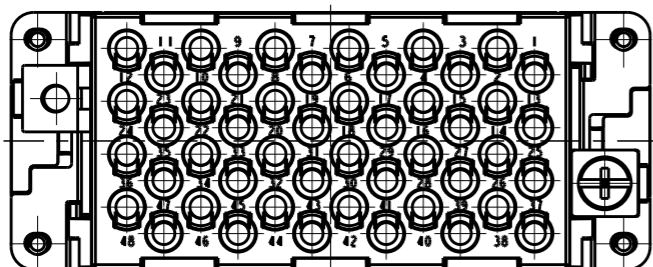


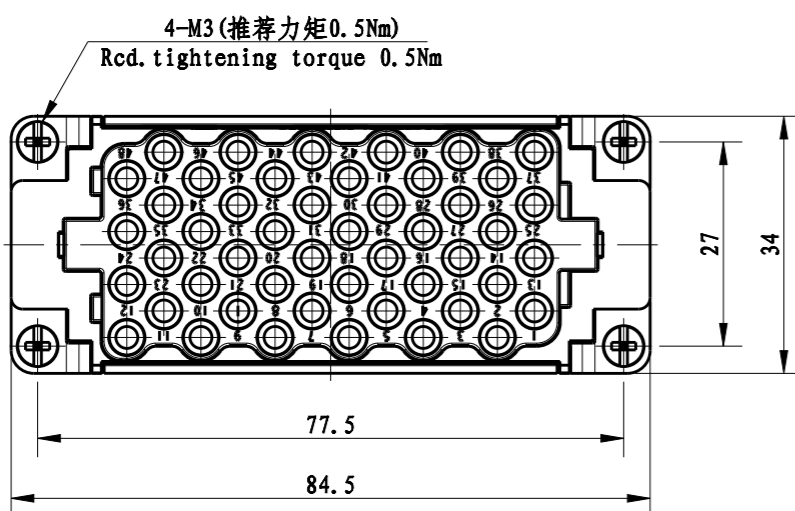
LOC	DIST	REVISIONS				
P	LTR	DESCRIPTION	DATE	DWN	APVD	
-	-	A	INITIAL RELEASE	18DEC2014	HMR	CW



不使用防护外壳时芯体的安装开孔图
Panel cut out for inserts for use without hoods/housings

Technical Characteristics/技术参数:

- Rated Voltage / 额定电压: 400V
- Rated Current / 额定电流: 16A
- Insulation R. / 绝缘电阻: > 400MΩ
- Impulse Volt. / 最高耐压: 6kV
- Pollution deg. / 污染等级: 3(C)
- Flammability / 阻燃等级: V0(UL94)
- Limiting Temp. / 工作温度: -40~125°C
- Mating Cycles / 插拔次数: 200次 for silver plated contact
500次 for gold plated contact
- Wire Range / 接线范围: 0.14-4.0mm², 26-12AWG
- Terminal type / 接线类型: Crimp contact 冷压接
- Contact need to be ordered separately (order No. refer to drawing T20300X20XX000)
端子需要单独订购 (订货号参照图面: T20300X20XX000)



HEEE-048-F	T2050482201-000
DESCRIPTION	PART NUMBER

THIS DRAWING IS A CONTROLLED DOCUMENT.		DWN 18DEC2014 RAGHAVENDRA H M			
CHK CHRIS WANG 18DEC2014		APVD 18DEC2014 XU XIANG			
DIMENSIONS: mm		TOLERANCES UNLESS OTHERWISE SPECIFIED:		NAME HEEE-048-F	
		0 PLC ± 1 PLC ± 2 PLC ± 3 PLC ± 4 PLC ± ANGLES ±		PRODUCT SPEC 108-137068	
MATERIAL -		FINISH -		APPLICATION SPEC -	
		WEIGHT -		SIZE A3	
				CAGE CODE 00779	
				DRAWING NO. T2050482201000	
				RESTRICTED TO -	
Customer Drawing		SCALE 1:1		SHEET 1 OF 1	
				REV A	