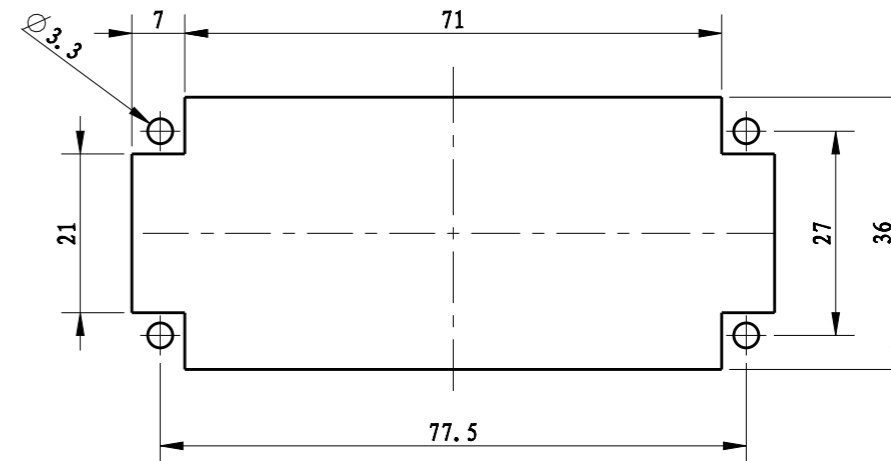
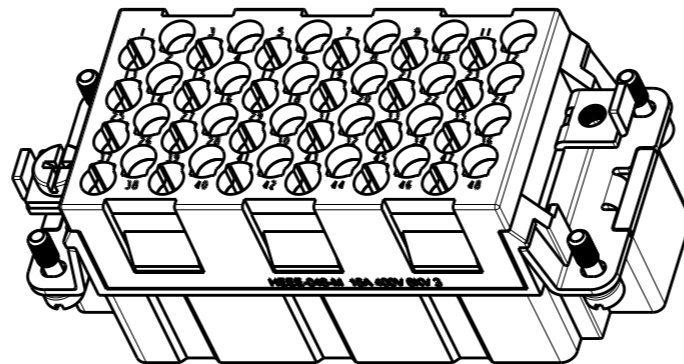
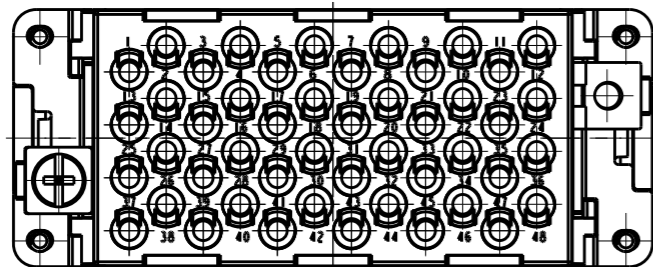
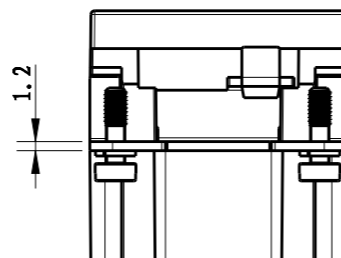
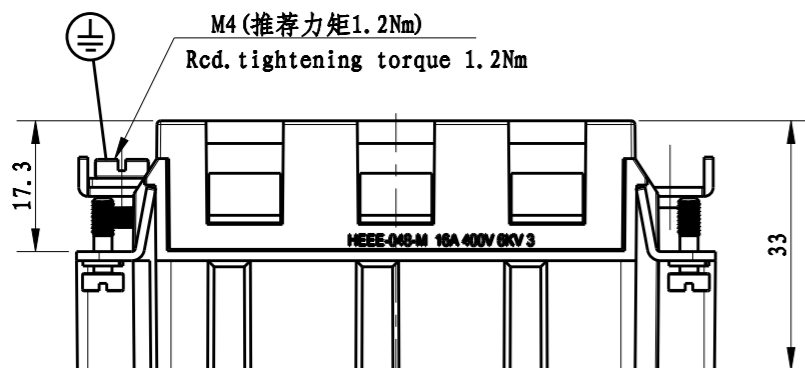


THIS DRAWING IS UNPUBLISHED. RELEASED FOR PUBLICATION 20
 © COPYRIGHT 20 BY - ALL RIGHTS RESERVED.

LOC	DIST	REVISIONS					
		P	LTR	DESCRIPTION	DATE	DWN	APVD
-	-		A	INITIAL RELEASE	18DEC2014	HMR	CW

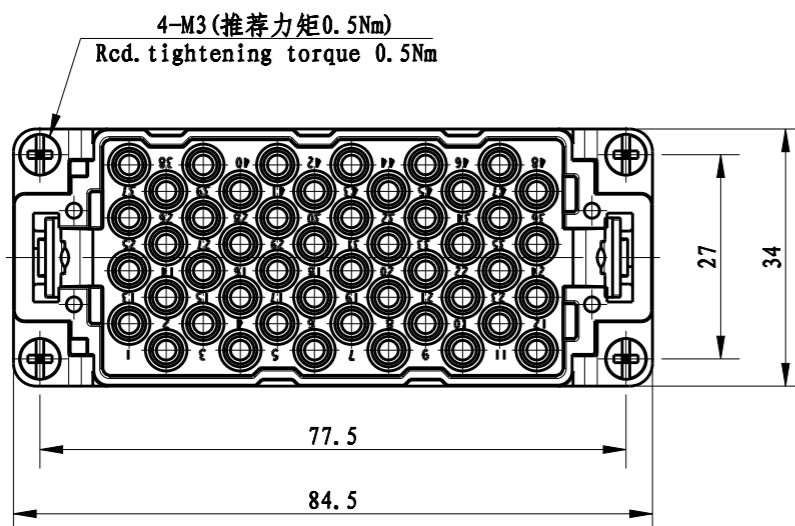


不使用防护外壳时芯体的安装开孔图
 Panel cut out for inserts for use without hoods/housings




Technical Characteristics/技术参数:

- Rated Voltage / 额定电压: 400V
- Rated Current / 额定电流: 16A
- Insulation R. / 绝缘电阻: >400MΩ
- Impulse Volt. / 最高耐压: 6kV
- Pollution deg. / 污染等级: 3(C)
- Flammability / 阻燃等级: V0(UL94)
- Limiting Temp. / 工作温度: -40~125℃
- Mating Cycles / 插拔次数: 200次 for silver plated contact
500次 for gold plated contact
- Wire Range / 接线范围: 0.14-4.0mm², 26-12AWG
- Terminal type / 接线类型: Crimp contact 冷压接
- Contact need to be ordered separately (order No. refer to drawing T20300X10XX000)
端子需要单独订购 (订货号参照图面: T20300X10XX000)



HEEE-048-M WITHOUT LOGO	T2059482101-000
DESCRIPTION	PART NUMBER

THIS DRAWING IS A CONTROLLED DOCUMENT.		DWN 18DEC2014 RAGHAVENDRA H M	 TE Connectivity	
DIMENSIONS: mm		CHK 18DEC2014 CHRIS WANG		
TOLERANCES UNLESS OTHERWISE SPECIFIED:		APVD 18DEC2014 XU XIANG	NAME HEEE-048-M WITHOUT LOGO	
0 PLC ±		PRODUCT SPEC 108-137068	SIZE A3	
1 PLC ±		APPLICATION SPEC -	CAGE CODE 00779	DRAWING NO. T2059482101000
2 PLC ±		MATERIAL -	RESTRICTED TO -	
3 PLC ±		FINISH -	SCALE 1:1	
4 PLC ±		WEIGHT -	SHEET 1 OF 1	
ANGLES ±		Customer Drawing	REV A	