

THIS DRAWING IS UNPUBLISHED.

RELEASED FOR PUBLICATION

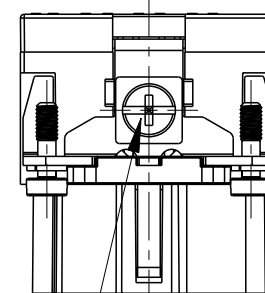
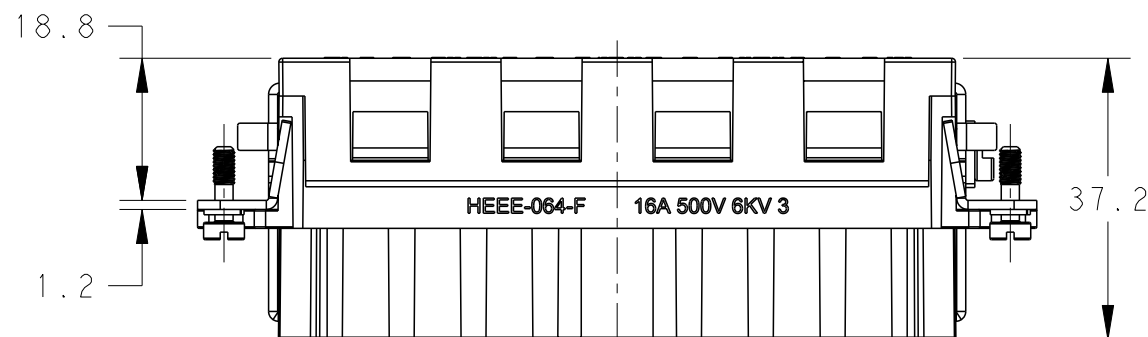
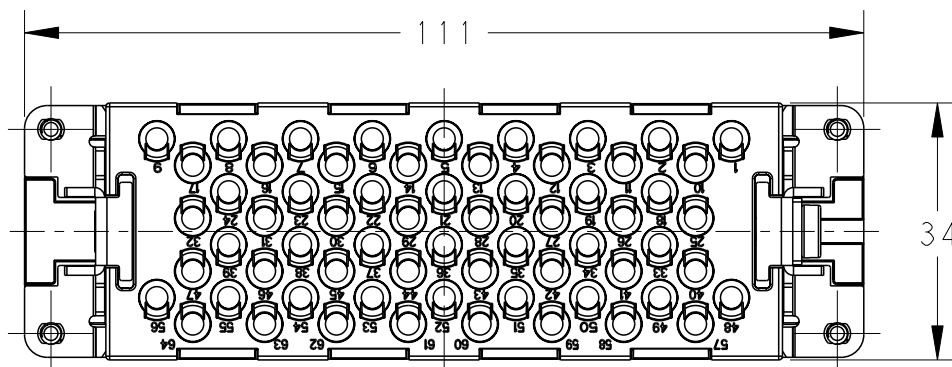
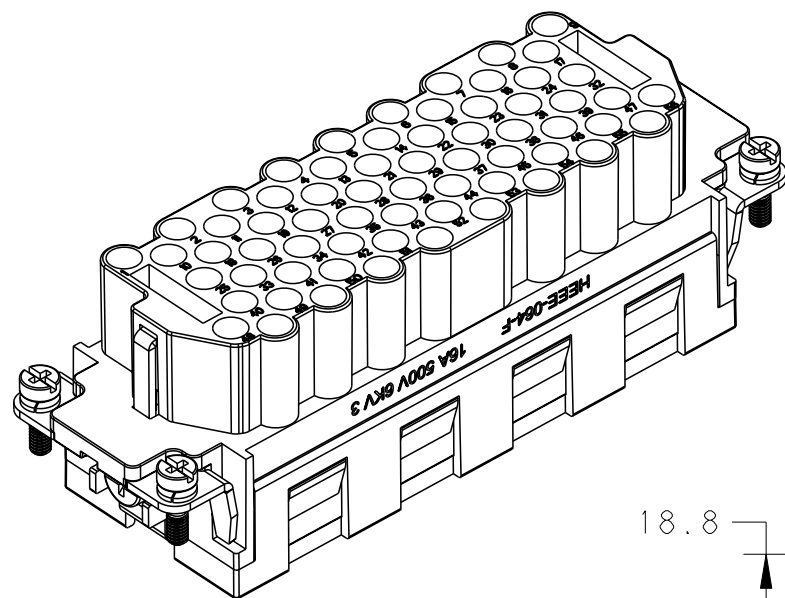
20

© COPYRIGHT 20 BY -

ALL RIGHTS RESERVED.

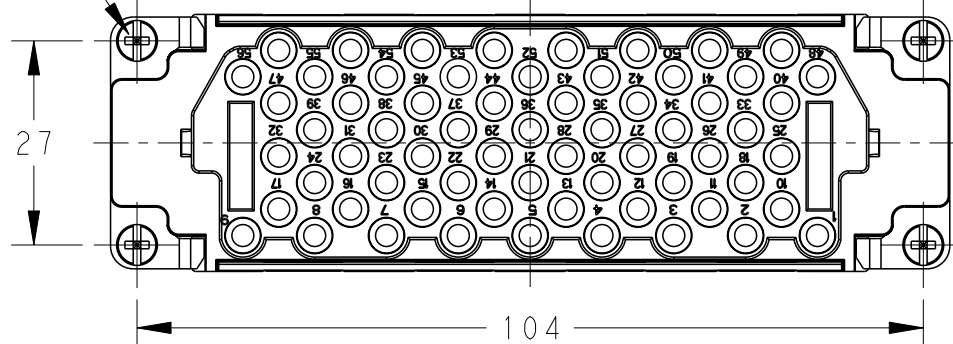
REVISIONS

P	LTR	DESCRIPTION	DATE	DWN	APVD
	A	INITIAL	05MAR2015	DW	CW



M4 THREAD  
RECOMMENDED  
TIGHTENING TORQUE  
1.2Nm

4X M3 THREAD, RECOMMENDED  
TIGHTENING TORQUE 0.5Nm



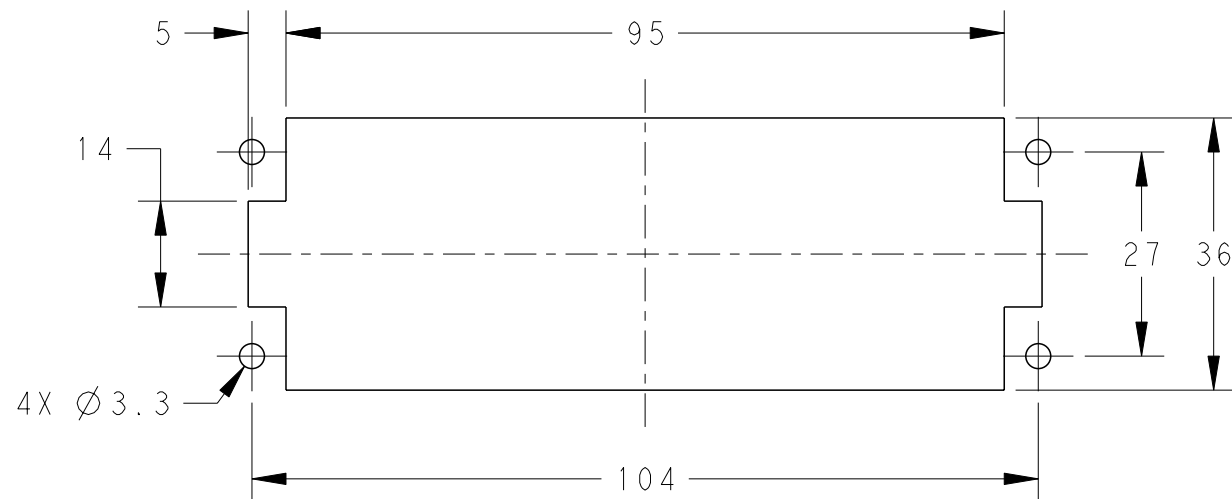
NOTES:

- TECHNICAL CHARACTERISTICS:  
INSULATION MATERIAL: PC  
RATED VOLTAGE: 500 V  
RATED CURRENT: 16 A  
INSULATION RESISTANCE:  $\geq 400M\Omega$   
RATED IMPULSE VOLTAGE: 6 KV  
POLLUTION DEGREE: 3  
CONTACT RESISTANCE:  $\leq 5 m\Omega$   
FLAMMABILITY: UL94V-0  
MATING CYCLES: 200 FOR SILVER PLATED  
500 FOR GOLD PLATED  
OPERATION TEMPERATURE:  $-40-+125^{\circ}C$   
WIRE RANGE: 0.14-4 mm<sup>2</sup> (26-12 AWG)  
CONTACT TYPE: CRIMP CONTACT
- CONTACT NEED TO BE ORDERED SEPARATELY.

注释:

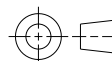
- 技术参数:  
绝缘材料: PC  
额定电压: 500V  
额定电流: 16A  
绝缘电阻:  $\geq 400M\Omega$   
额定脉冲电压: 6 KV  
污染等级: 3  
接触电阻:  $\leq 5 m\Omega$   
阻燃等级: UL94V-0  
插拔次数: 镀银端子: 200次  
镀金端子: 500次  
工作温度:  $-40-+125^{\circ}C$   
接线范围: 0.14-4 mm<sup>2</sup> (26-12 AWG)  
接线类型: 冷压接
- 端子需要单独订购.

PANEL CUT FOR INSERTS FOR USE  
WITHOUT HOODS/ HOUSINGS



THIS DRAWING IS A CONTROLLED DOCUMENT.

DIMENSIONS:  
mm



TOLERANCES UNLESS OTHERWISE SPECIFIED:

0 PLC	±-
1 PLC	±-
2 PLC	±-
3 PLC	±-
4 PLC	±-
ANGLES	±-
FINISH	-

MATERIAL

DWN	05MAR2015
David Wang	
CHK	05MAR2015
Chris Wang	
APVD	05MAR2015
Xiang Xu	
PRODUCT SPEC	108-137068
APPLICATION SPEC	114-137068
WEIGHT	-
Customer Drawing	

HEEE-064-F WITHOUT LOGO	T2059643201-000
DESCRIPTION	PART NUMBER



NAME HEEE-064-F WITHOUT LOGO			
SIZE	CAGE CODE	DRAWING NO	RESTRICTED TO
A3	00779	T2059643201000	-
SCALE		SHEET	REV
1:1		1 OF 1	A