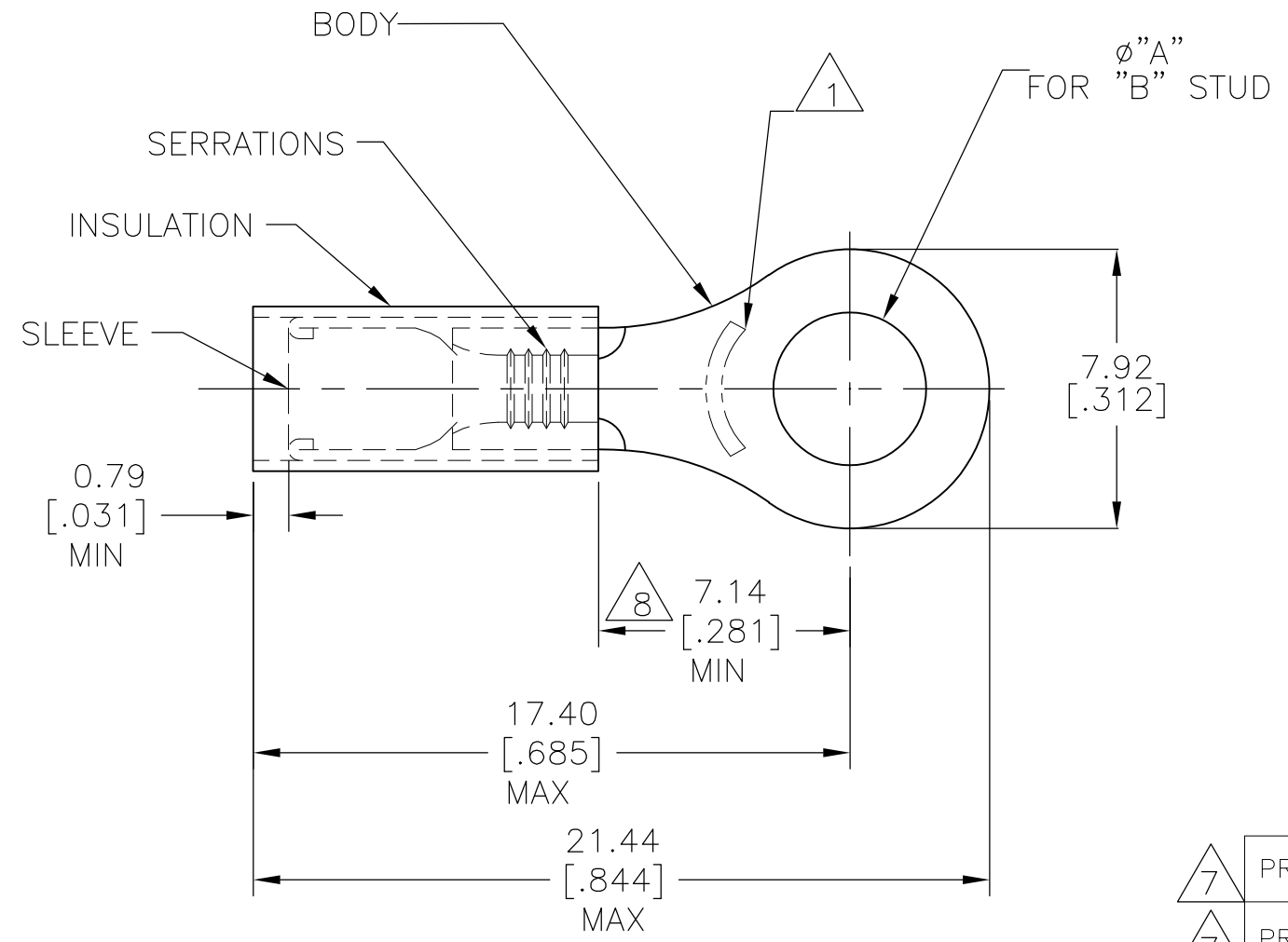


THIS DRAWING IS UNPUBLISHED. RELEASED FOR PUBLICATION  
 © COPYRIGHT - By - ALL RIGHTS RESERVED.

REVISIONS					
P	LTR	DESCRIPTION	DATE	DWN	APVD
	H6	REVISED PER ECO-15-016493	27NOV2015	NK	DR

- 1 STAMP "AMP 18-16\*" APPROX AS SHOWN
- 2 FOR 1.40[.055] TO 3.43[.135] WIRE INSULATION DIA.
- 3 TONGUE MATERIAL THK: 0.79±0.05 [.031±.002]
- 4 BODY: MATERIAL: COPPER ASTM B152  
FINISH: GOLD PL. PER ASTM B488, TYPE 1 CODE C, 0.00254 [.000100] MIN EXT THK OVER NICKEL PER SAE AMS QQ-N-290 0.00076 [.000030] EXT. THK.
- 5 SLEEVE: MATERIAL: COPPER ASTM B152  
FINISH: NICKEL PL. SAE AMS QQ-N-290 0.00076 [.000030] AVG EXT THK.
- 6 INSULATION: MATERIAL: PTFE (ASTM D3295)  
COLOR: ORANGE
- 7 INSULATION: PVDF  
COLOR: ORANGE
- 8 DIMENSION APPLIES FROM EDGE OF METAL WIRE BARREL TO CENTER OF STUD HOLE



7	PRELIMINARY	1000	LOOSE PIECE	#10	5.00±0.08 [.197±.003]	332454-2
7	PRELIMINARY	1000	LOOSE PIECE	M4[#8]	4.34±0.08 [.171±.003]	332454-1
6		1000	LOOSE PIECE	#10	5.00±0.08 [.197±.003]	1-332454-0
6		1000	LOOSE PIECE	M4[#8]	4.34±0.08 [.171±.003]	332454
		PACKAGE QTY	PACKAGE TYPE	"B"	"A"	PART NO.

AMP INCORPORATED CUSTOMER SERVICE SYSTEMS		MAX RECOMMENDED OPERATING TEMPERATURE: 260°C [500°F]	THIS DRAWING IS A CONTROLLED DOCUMENT.		DWN JR RUTH 11JUL05	<b>STE</b> TE Connectivity	
FOR ADDITIONAL PRODUCT INFORMATION OR COPIES OF DRAWINGS AND TECHNICAL DOCUMENTS	PRODUCT INFORMATION CENTER 1-800-522-6752	VOLTAGE RATING: 300V MAX	DIMENSIONS: mm [INCHES]	TOLERANCES UNLESS OTHERWISE SPECIFIED:	CHK T MICHELUTTI 11JUL05		
FOR APPLICATION TOOLING INFORMATION	TOOLING ASSISTANCE CENTER 1-800-722-1111	CIRCULAR MIL AREA: 0.81-1.42mm² [1,600-2,800] STRANDED WIRE ONLY		0 PLC ± - 1 PLC ± - 2 PLC ± 0.20[.008] 3 PLC ± - 4 PLC ± - ANGLES ± -	APVD T MICHELUTTI 11JUL05	PRODUCT SPEC	SIZE
FOR ORDER ENTRY	1-800-526-5142		MATERIAL	FINISH		APPLICATION SPEC	CAGE CODE
						WEIGHT	DRAWING NO
			4 5 6 7	4 5 6 7			RESTRICTED TO
							A300779
							C-332454
							SCALE 5:1
							SHEET 1 OF 1
							REV H6