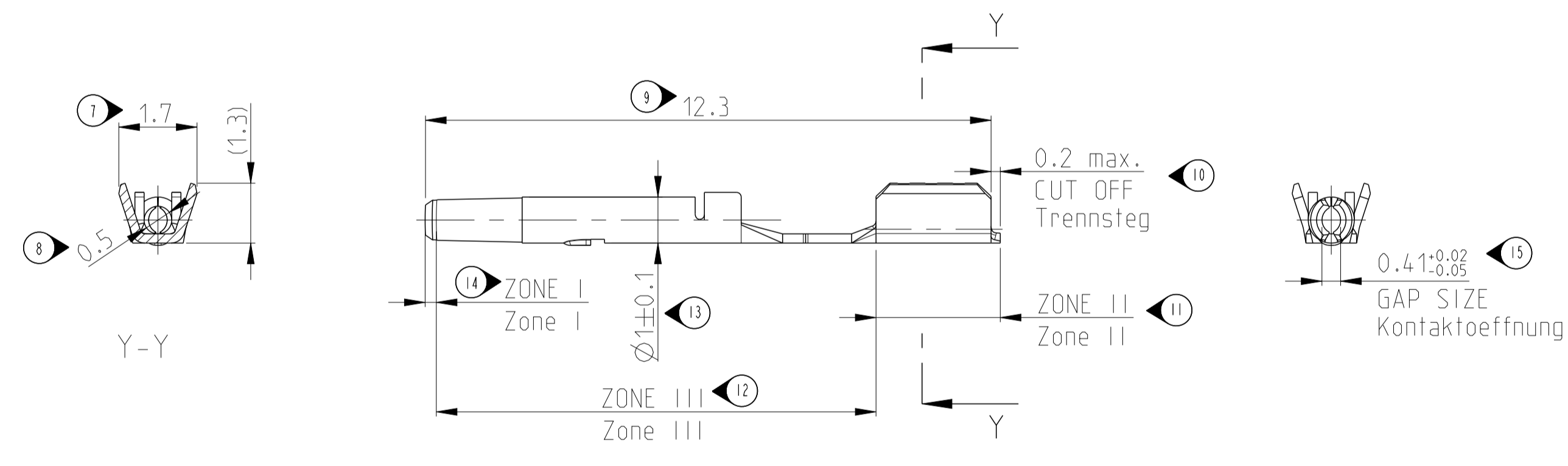
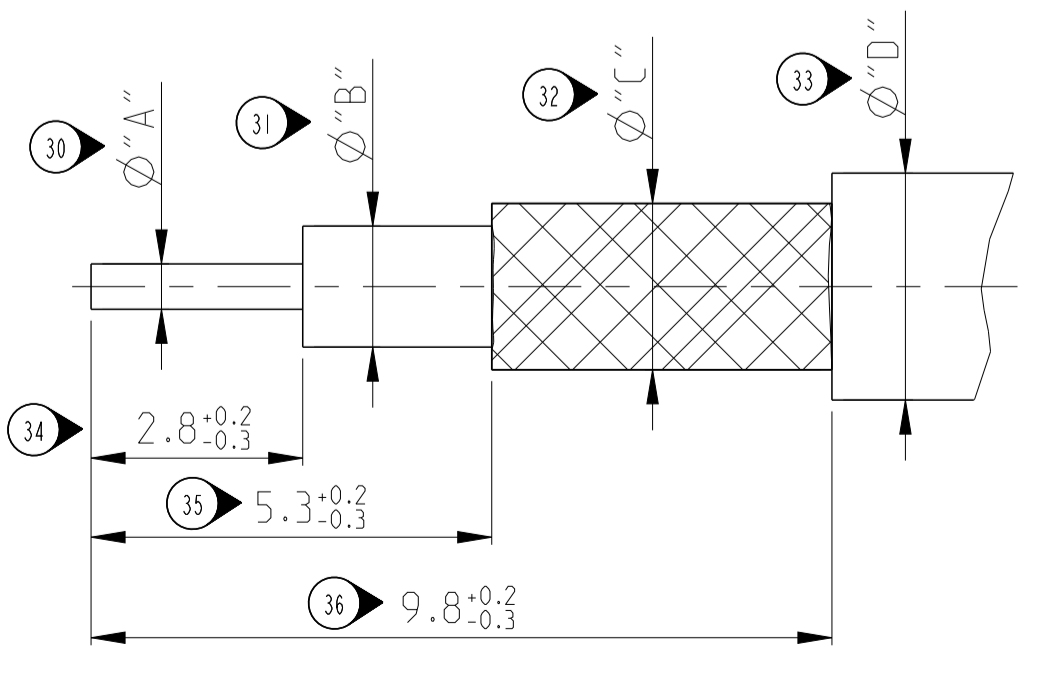


ASSEMBLED VIEWS / Assembled Views

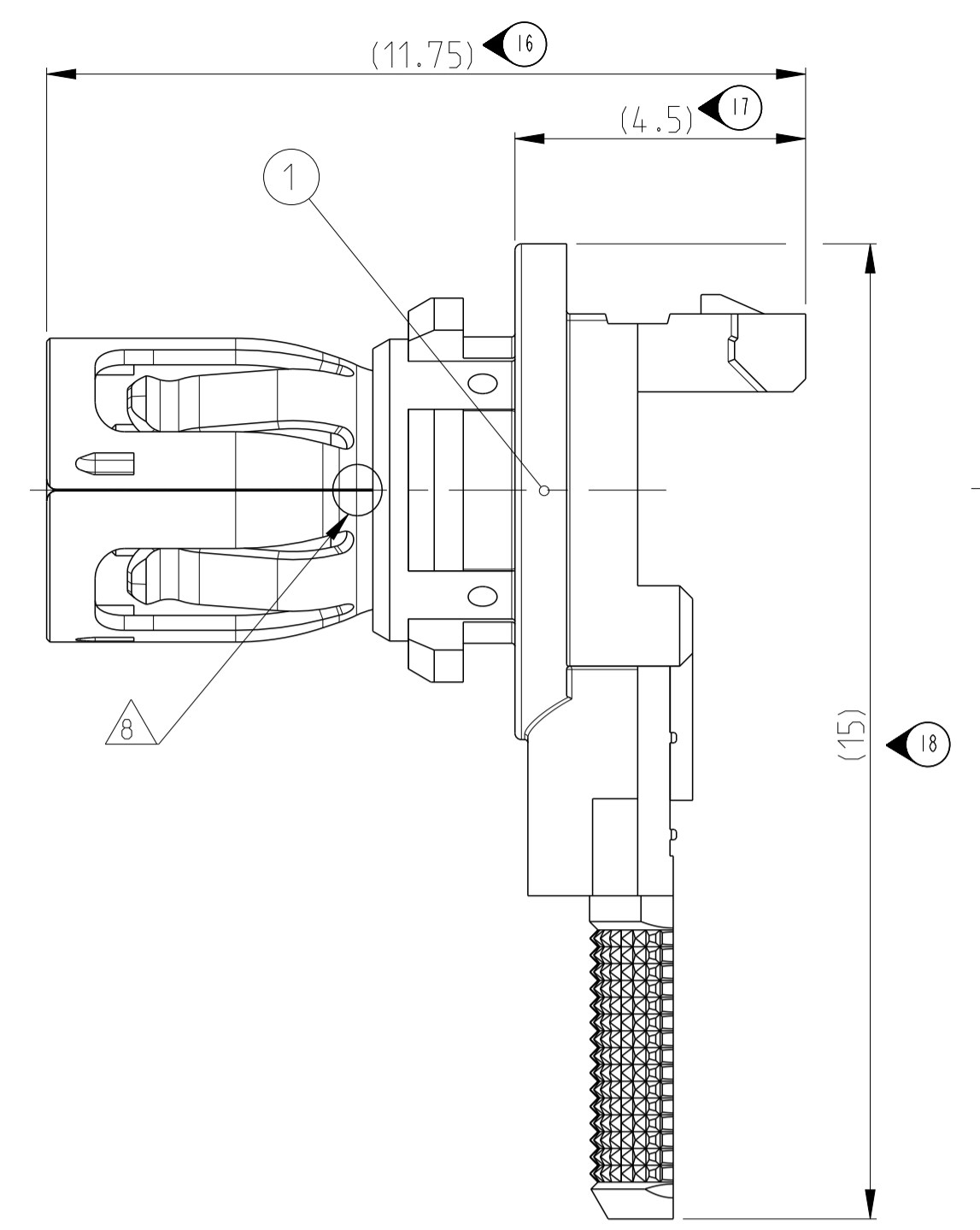


CENTER CONTACT (ITEM 2) / Innenleiter (Item 2)

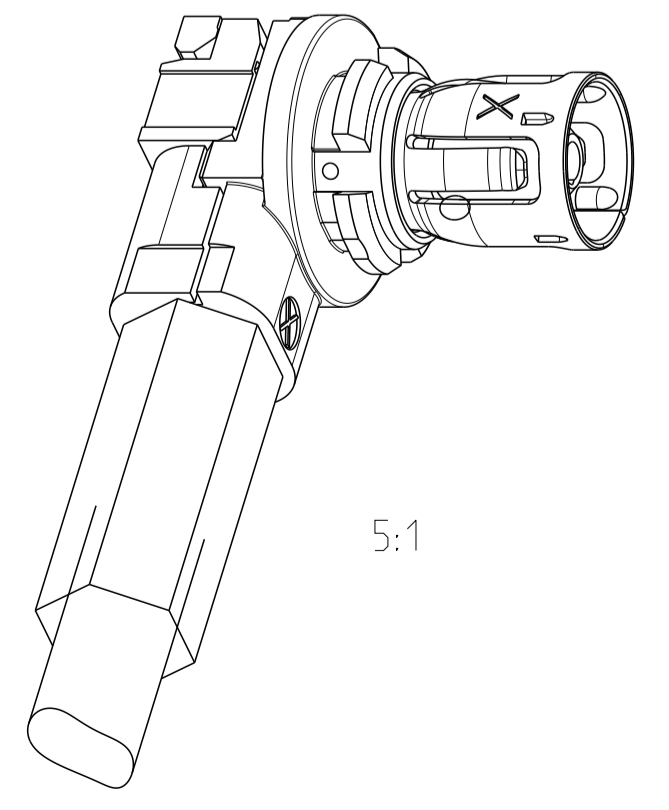
CABLE TYPE Kabeltype	Ø "A"	Ø "B"	Ø "C"	Ø "D"
1.5DS (TE-P/N 1832844-1)	Ø0.6 nom.	Ø1.6 nom.	Ø2.2 nom.	Ø3.0 nom.
1.5DS (TE-P/N 2300568-1)	Ø0.6 nom.	Ø1.6 nom.	Ø2.2 nom.	Ø3.0 nom.



RECOMMENDED STRIP DIMENSIONS / Empfohlene Abisolierdimensionen



- 50 1 2-4 µm Ni
- 51 2 2-4 µm Sn OVER 1.27 µm MIN. Ni OVER 5.08 µm MIN. Cu
2-4 µm Sn ueber min. 1.27 µm Ni ueber min. 5.08 µm Cu
- 52 3 ZONE I: 0.8 µm MIN. Au OVER 1.27 µm MIN. Ni
ZONE II: 2-4 µm Sn OVER 0.1 µm MIN. Ni
ZONE III: 0.1µm MIN. Ni
Zone I: min. 0.8 µm Au ueber min. 1.27 µm Ni
Zone II: 2-4 µm Sn ueber min. 0.1 µm Ni
Zone III: min. 0.1 µm Ni
- 53 4 PRETINNED (1-3 µm Sn)
Vorverzinnt (1-3 µm Sn)
- 54 5. THE CONNECTOR MUST FULFILL THE DIMENSIONAL REQUIREMENTS OF DIN 72594-1, RELEASED MARCH 2006, AND THE MECHANICAL AND ELECTRICAL REQUIREMENTS OF USCAR 17 REV. 2. Der Kuppler muss die dimensionellen Anforderungen nach DIN 72594-1, Ausgabe Maerz 2006, und die elektrischen und mechanischen Anforderungen nach SAE/USCAR 17 rev. 2 erfuellen.
- 55 6 COMPONENTS MUST BE PURCHASED SEPARATELY.
Komponenten sind separat zu bestellen.
- 56 7 CRIMP TO BE MEASURED AT THIS POINT SEE APPLICATION SPECIFICATION.
Crimp an diesem Punkt zu Messen Ausfuehrung siehe Verarbeitungsspezifikation.
- 57 8 WELDING POINT
Schweisspunkt
- 58 9. CHARACTERS ON THE PARTS STAND FOR THE REVISION OF THAT COMPONENT, NOT OF THE SUBASSEMBLY OR ASSEMBLY.
Die Buchstaben auf den Teilen stehen fuer die Revision der entsprechende Komponente, nicht des Subassembly oder Assembly.



CONTACT KIT PART NUMBER	PART NO. TO BE ORDERED	ITEM NO	DESCRIPTION	MATERIAL	PLATING
2112466-1	1-0413889-4	4	FERRULE Crimphuelse	SfCu	1
	1719658-1	3	REAR SHELL SUBASSY Hinterschale (Deckel)	3a. PBT 3b. Zn-Leg. Zn-ALLOY	2
	2112465-1	2	CENTER CONTACT Innenleiterkontakt	CuNiSi	3
	1719656-1	1	FRONT SHELL SUBASSY Subassembly	1a. CuNiSi 1b. PEHD 1c. Zn-Leg. Zn-ALLOY	4

THIS DRAWING IS A CONTROLLED DOCUMENT. DIMENSIONS: mm. TOLERANCES UNLESS OTHERWISE SPECIFIED: 0 PLC ±0.5, 1 PLC ±0.2, 2 PLC ±0.1, 3 PLC ±, 4 PLC ±. ANGLES: ±°. MATERIAL: SEE TABLE siehe Tabelle. FINISH: SEE TABLE siehe Tabelle.

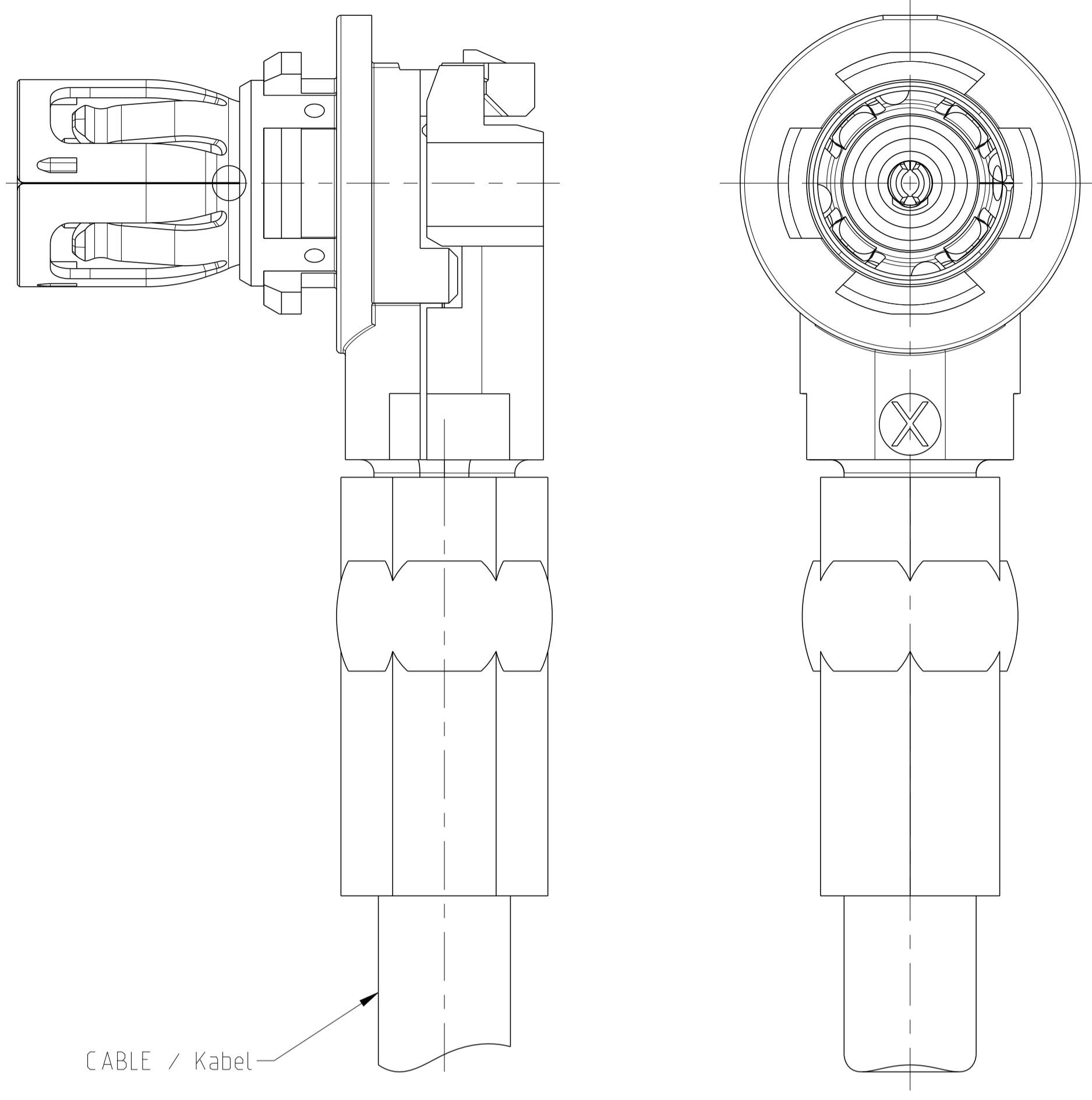
OWN: V. Cech 10NOV2009. CHK: T. Konecny 12NOV2009. APVD: T. Konecny 12NOV2009. PRODUCT SPEC: 108-94.089. APPLICATION SPEC: 114-18623. WEIGHT: -. CUSTOMER DRAWING: A1 00779 ©=2112466. SCALE: 10:1. SHEET: 1 OF 2. REV: A5.

STE TE Connectivity. NAME: HF FAKRA 90 DEG. TURNABLE VERSION Contact Kit, Plug, Unassembled 1.5DS CABLE. SIZE: CAGE CODE DRAWING NO. RESTRICTED TO: A1 00779 ©=2112466.

LOC	DIST	REV	DATE	BY	CHK
GT	-	A3	12DEC2011	SR	VC
		A4	03MAR2016	VH	NR
		A5	12JUL2016	JB,JH	NR

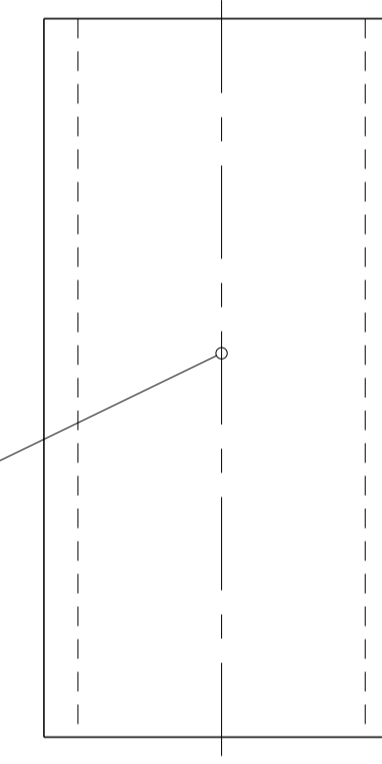
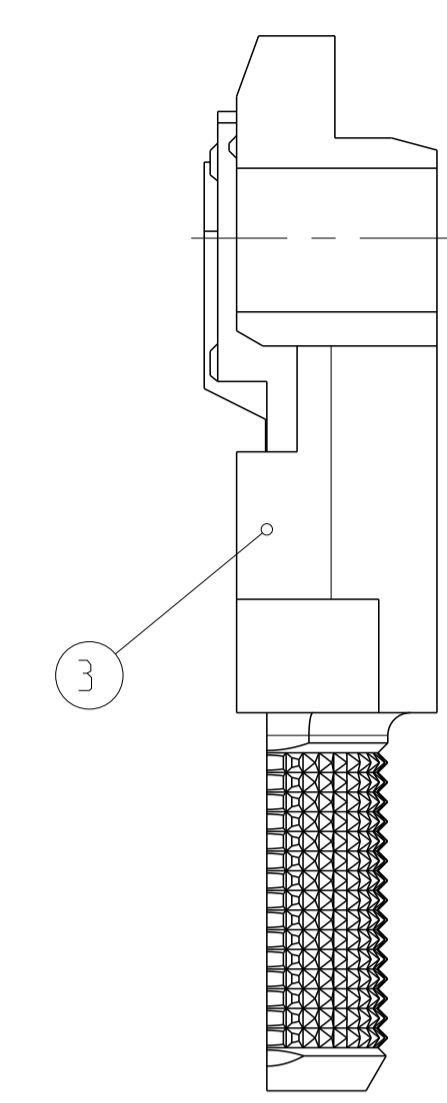
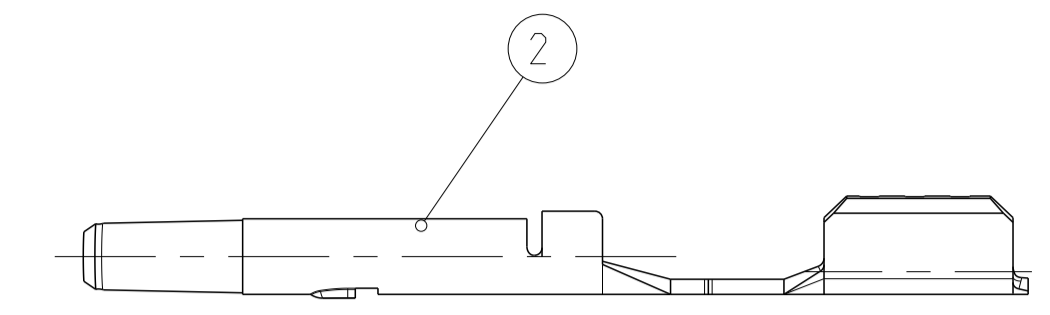
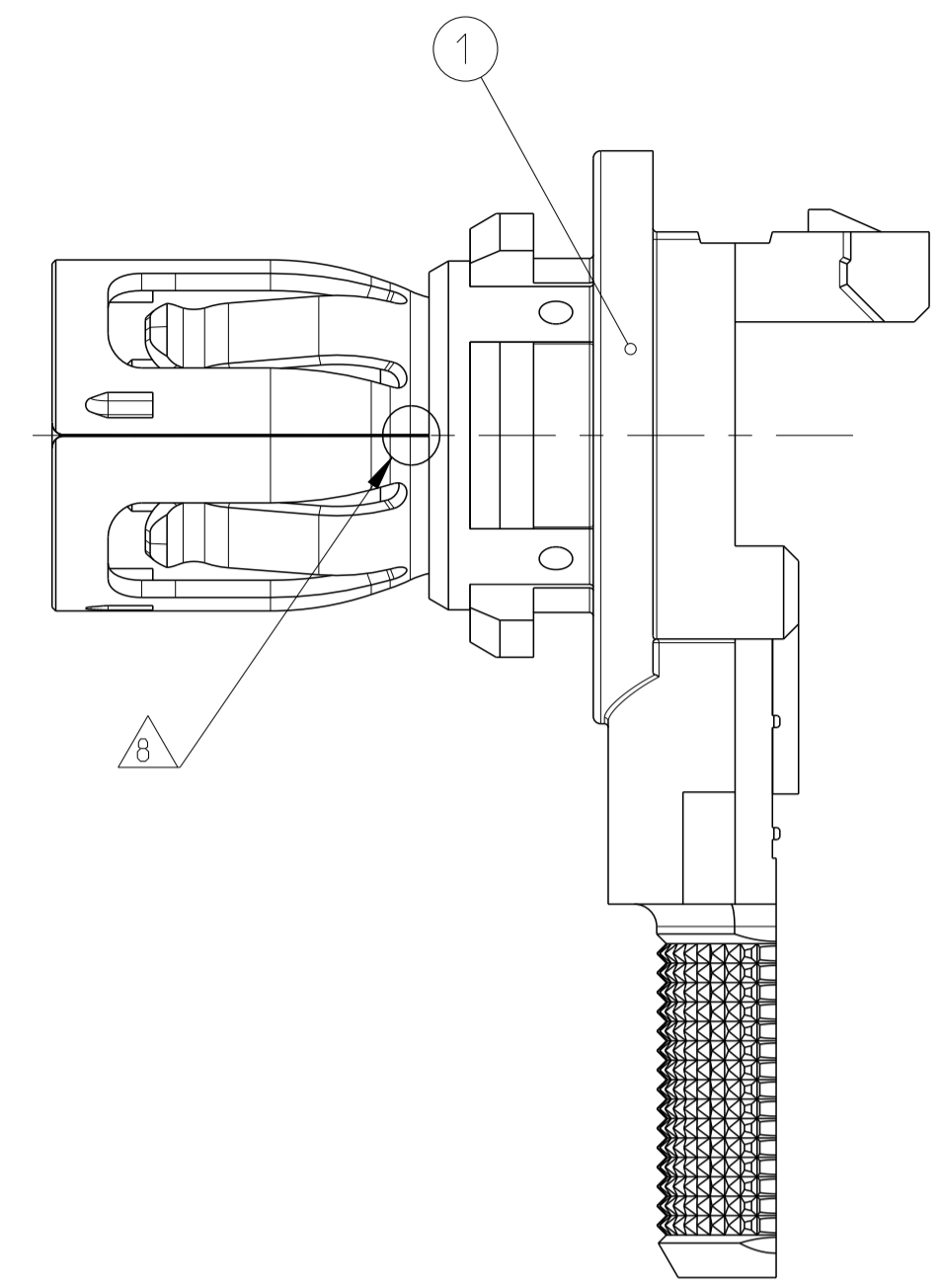
LOC	DIST	REVISIONS			
P	LTN	DESCRIPTION	DATE	DMN	APVD
-	-	SEE SHEET 1	-	-	-

-2 AS SHOWN

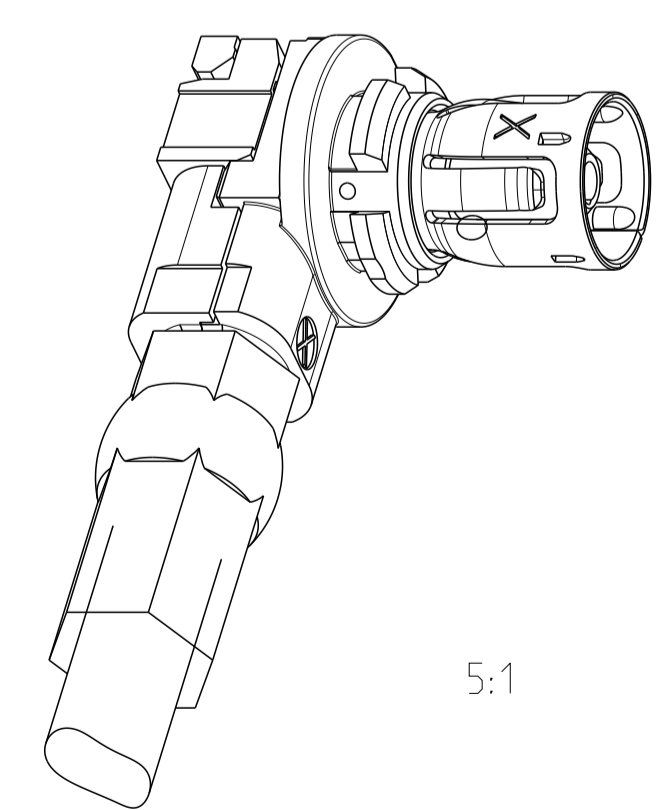


ASSEMBLED VIEWS / Assemblede Ansichten

A5 (PLEASE REFER -1 VARIANT FOR NOTES AND DIMENSIONS)



A5 (PLEASE REFER 2112466-1 FOR NOTES AND DIMENSIONS)



5:1

CONTACT KIT PART NUMBER	PART NO. TO BE ORDERED	ITEM NO	DESCRIPTION	MATERIAL	PLATING
A5 2112466-2	A5 1488167-1	4	FERRULE Crimphülse	SfCu	1
	A5 1719658-2	3	REAR SHELL SUBASSY Hinterschale (Deckel)	3a. PBT 3b. Zn-Leg. Zn-ALLOY	2
	2112465-1	2	CENTER CONTACT Innenleiterkontakt	CuNiSi	3
	A5 1719656-2	1	FRONT SHELL SUBASSY Subassembly	1a. CuNiSi 1b. PEHD 1c. Zn-Leg. Zn-ALLOY	4 2

THIS DRAWING IS A CONTROLLED DOCUMENT.		DMN V. Cech 10NOV2009	TE Connectivity NAME HF FAKRA 90 DEG. TURNABLE VERSION Contact Kit, Plug, Unassembled 1.5DS CABLE
DIMENSIONS: mm		CHK T. Konecny 12NOV2009	
TOLERANCES UNLESS OTHERWISE SPECIFIED:		APVD T. Konecny 12NOV2009	RESTRICTED TO
0 PLC ±0.5	1 PLC ±0.2	PRODUCT SPEC	SIZE
2 PLC ±0.1	3 PLC ±	APPLICATION SPEC	CAGE CODE
4 PLC ±	ANGLES ±°	FINISH	DRAWING NO
MATERIAL SEE TABLE	SEE TABLE	WEIGHT	SCALE
siehe Tabelle	siehe Tabelle	CUSTOMER DRAWING	10:1