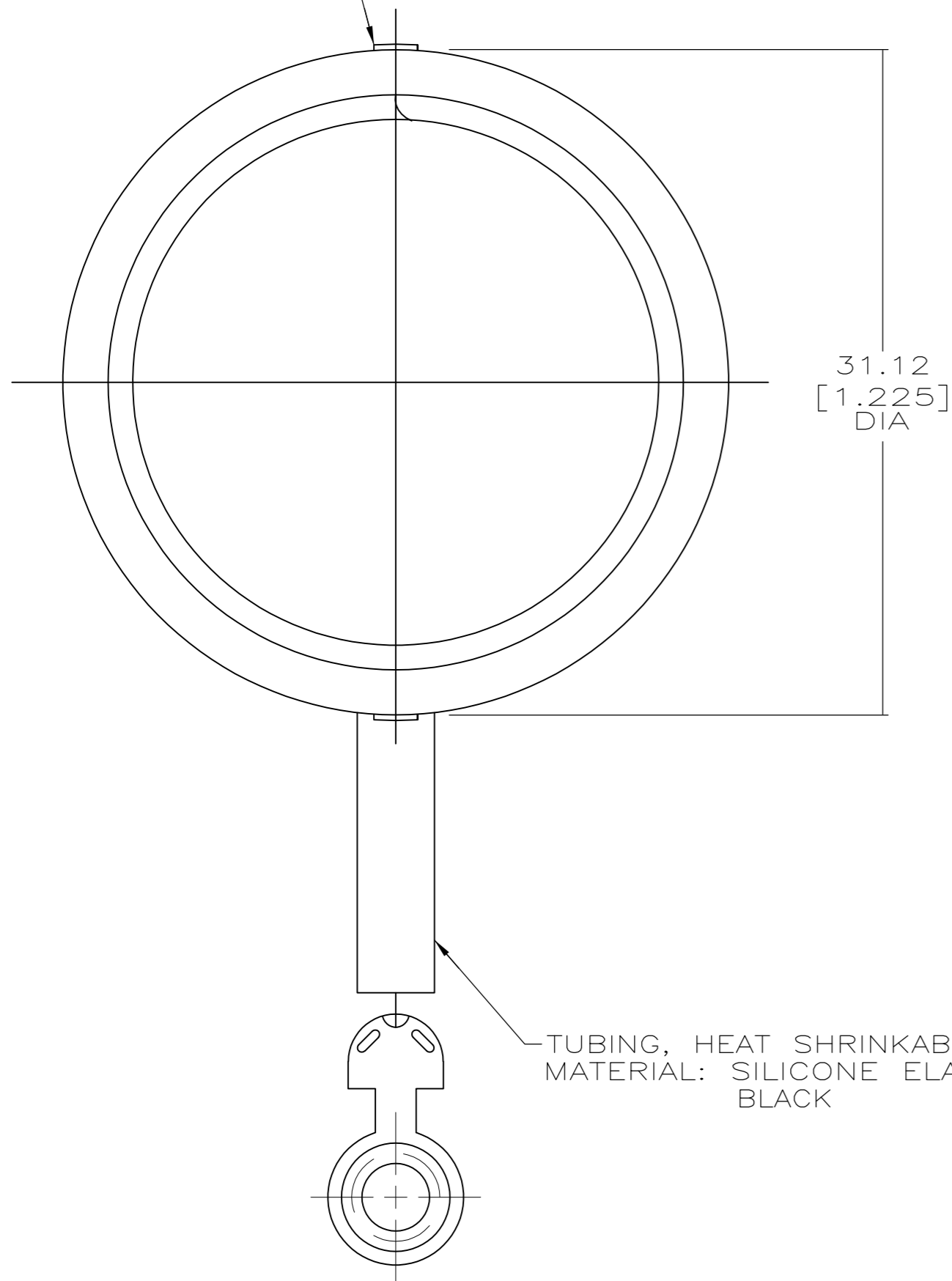


THIS DRAWING IS UNPUBLISHED. RELEASED FOR PUBLICATION  
 © COPYRIGHT - By - ALL RIGHTS RESERVED.

REVISIONS					
P	LTR	DESCRIPTION	DATE	DWN	APVD
B1		REVISED PER ECO-16-004800	12SEP2016	NK	MZ

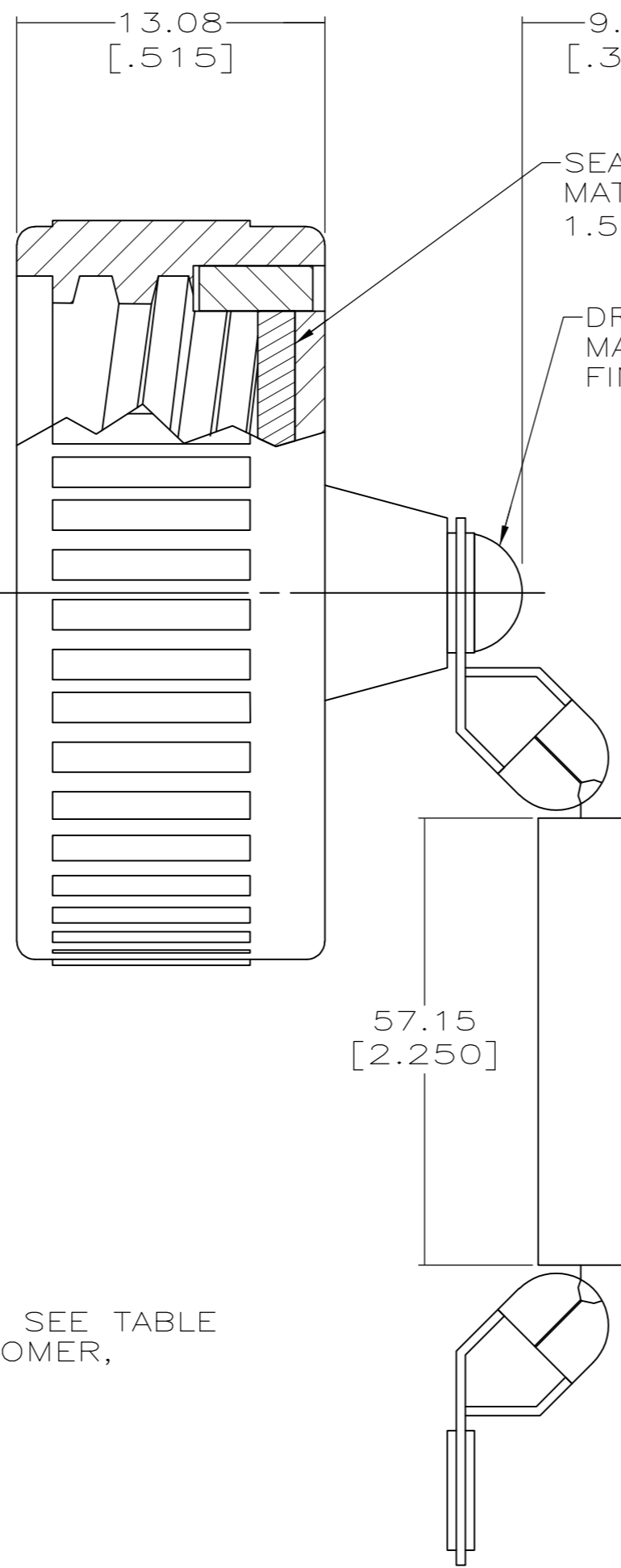
RAISED INDICATOR  
ARROW



31.12  
[1.225]  
DIA

TUBING, HEAT SHRINKABLE: SEE TABLE  
MATERIAL: SILICONE ELASTOMER,  
BLACK

⚠ BEADED PORTION OF CHAIN MUST ROTATE FREELY. THE EYELET OF THE CHAIN IS NOT REQUIRED TO SPIN FREELY AROUND THE STUD.



13.08  
[.515]

57.15  
[2.250]

9.14 MAX  
[.360]

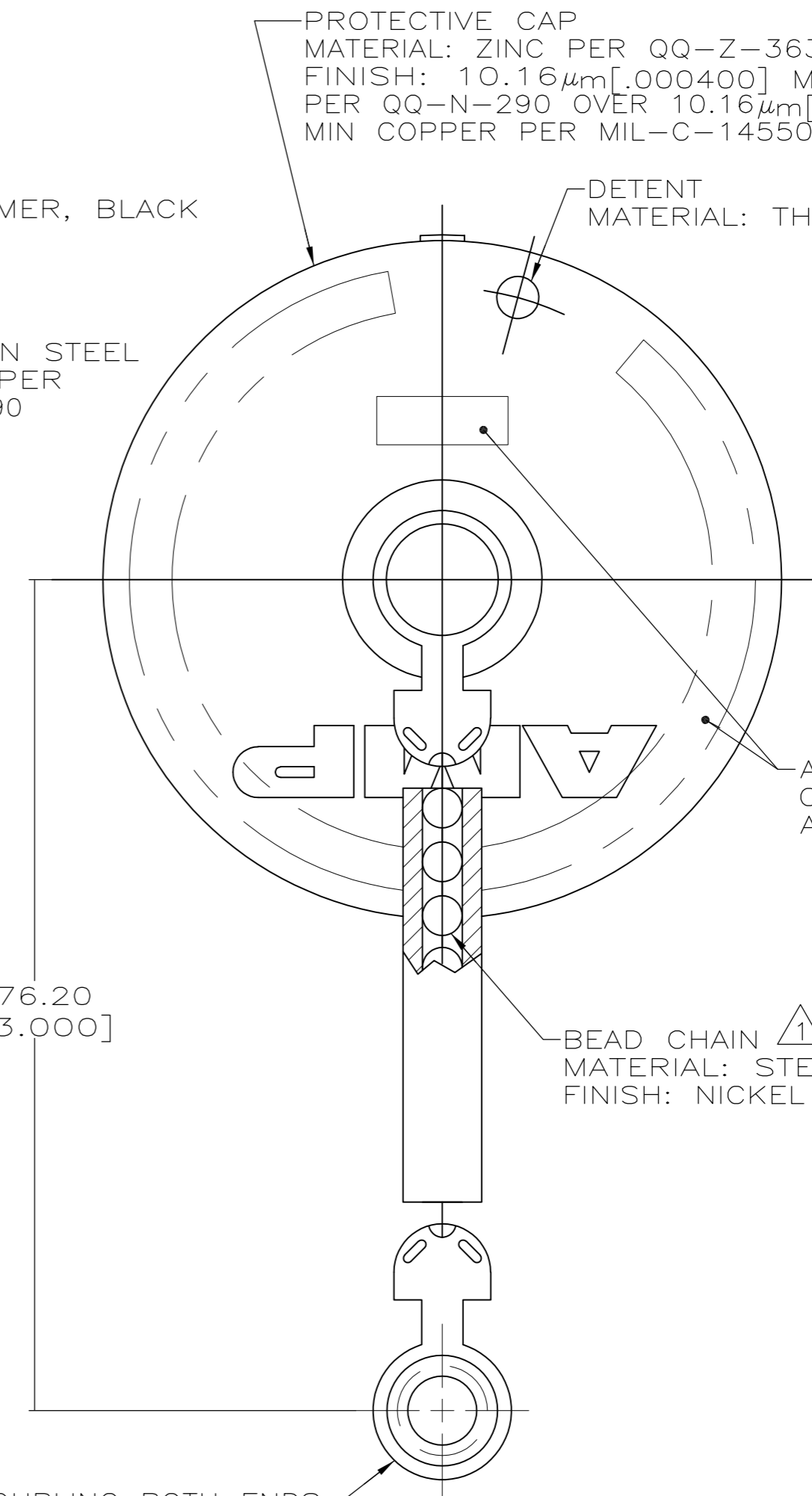
SEALING GASKET  
MATERIAL: ELASTOMER, BLACK  
1.57 [.062] THK

DRIVE STUD  
MATERIAL: CARBON STEEL  
FINISH: NICKEL PER  
QQ-N-290

COUPLING BOTH ENDS  
MATERIAL: BRASS  
FINISH: NICKEL PER  
QQ-N-290

PROTECTIVE CAP  
MATERIAL: ZINC PER QQ-Z-363  
FINISH: 10.16 μm [.000400] MIN NICKEL  
PER QQ-N-290 OVER 10.16 μm [.000400]  
MIN COPPER PER MIL-C-14550

DETENT  
MATERIAL: THERMOPLASTIC, BLACK



76.20  
[3.000]

BEAD CHAIN ⚠  
MATERIAL: STEEL  
FINISH: NICKEL PER QQ-N-290

AMP, PART NO & DATE  
CODE STAMPED IN  
ANY OF THESE AREAS.

	NO	213823-2
OBSOLETE	YES	<del>213823-1</del>
	TUBING	PART NUMBER

THIS DRAWING IS A CONTROLLED DOCUMENT.		DWN K.FOLTZ 01/20/95																						
DIMENSIONS: mm [INCHES]		CHK R.STONE 01/20/95																						
TOLERANCES UNLESS OTHERWISE SPECIFIED:		APVD A.FRANTUM 01/23/95	NAME PROTECTIVE CAP ASSEMBLY, SIZE 14, CMC																					
<table border="0"> <tr><td>0 PLC</td><td>±</td><td>-</td></tr> <tr><td>1 PLC</td><td>±</td><td>-</td></tr> <tr><td>2 PLC</td><td>±</td><td>0.25 [.010]</td></tr> <tr><td>3 PLC</td><td>±</td><td>-</td></tr> <tr><td>4 PLC</td><td>±</td><td>-</td></tr> <tr><td>ANGLES</td><td>±</td><td>-</td></tr> </table>		0 PLC	±	-	1 PLC	±	-	2 PLC	±	0.25 [.010]	3 PLC	±	-	4 PLC	±	-	ANGLES	±	-	APPLICATION SPEC	SIZE	CAGE CODE	DRAWING NO	RESTRICTED TO
0 PLC	±	-																						
1 PLC	±	-																						
2 PLC	±	0.25 [.010]																						
3 PLC	±	-																						
4 PLC	±	-																						
ANGLES	±	-																						
MATERIAL SEE CALLOUTS		FINISH SEE CALLOUTS	WEIGHT	A2	00779	C=213823	-																	
		CUSTOMER DRAWING	SCALE	4:1	SHEET	1 of 1	REV B1																	