

REVISION C

DO NOT SCALE FROM THIS PRINT

DESIGNED & DIMENSIONED IN MILLIMETERS[INCHES]

NOTES:

1. ⊕ REPRESENTS A CRITICAL DIMENSION.
2. MINIMUM PUSHOUT FORCE: SIGNAL: 0.65N[0.15 LB], WELD TAB: 2.22N[0.5 LB].
3. FOR QUANTITIES UP TO 49 PIECES, NO LEADER, TRAILER, OR REEL WILL BE SUPPLIED. FOR QUANTITIES OF 50-124 PIECES, NO LEADER OR TRAILER WILL BE SUPPLIED.

FT5-XX-01-X-RA-K-TR

No OF POSITIONS
-15, -30, *-35, *-50
(PER ROW)

PACKAGING
-TR: TAPE & REEL
(STANDARD)(SEE NOTE 3)

LEAD STYLE
-01: .062"
PCB

OPTIONS
-K: POLYIMIDE FILM PAD
(SEE FIG. 2, SHT 2)

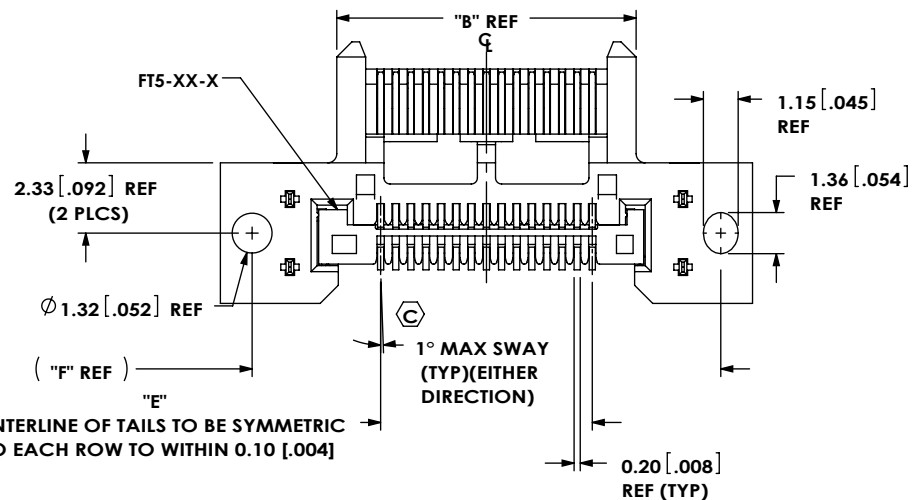
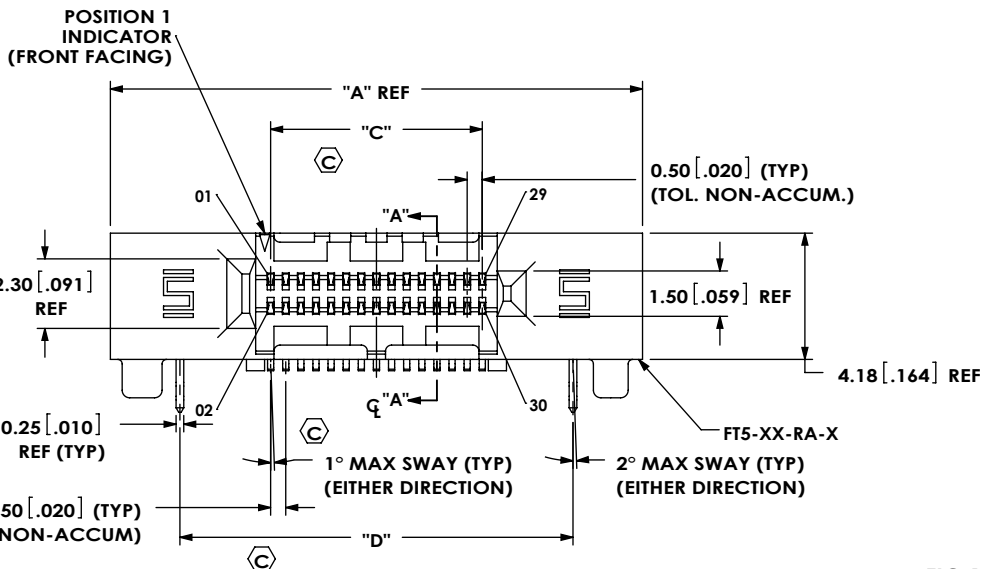
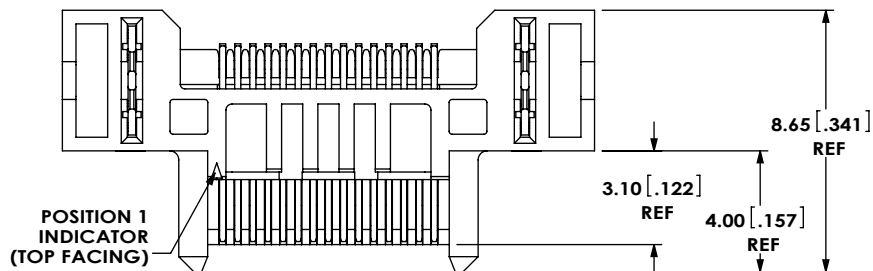
PLATING SPECIFICATION

-L: 10 μ " LIGHT GOLD IN CONTACT AREA, MATTE TIN ON TAIL

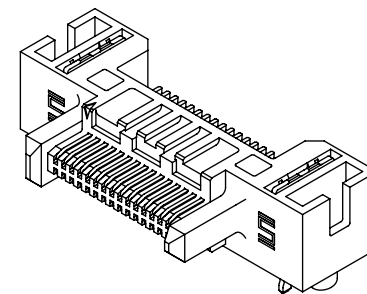
ROW SPECIFICATION

-RA: RIGHT ANGLE

(* = NOT TOOLED)



CENTERLINE OF TAILS TO BE SYMMETRIC TO EACH ROW TO WITHIN 0.10 [.004]



Q OF A-PINS & WELD TABS

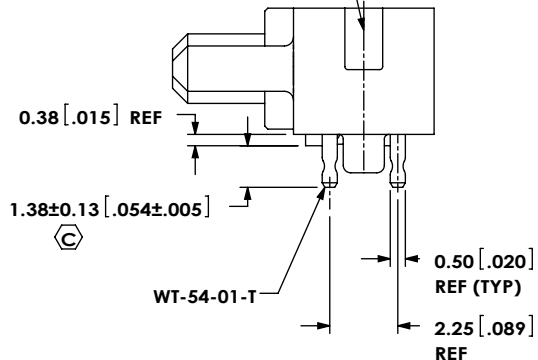


FIG 1
FT5-15-01-X-RA SHOWN

TABLE 1

No. OF POS	"A"	"B"	"C"	"D"	"E"	"F"
-15	17.60 [0.693]	9.900 [0.3898]	7.000 [0.2756]	13.00 [0.512]	7.00 [0.276]	15.50 [0.610]
-30	25.10 [0.988]	17.400 [0.6850]	14.500 [0.5709]	20.50 [0.807]	14.50 [0.571]	23.00 [0.906]
*-35	27.60 [1.087]	19.900 [0.7835]	17.000 [0.6693]	23.00 [0.906]	17.00 [0.669]	25.50 [1.004]
*-50	35.10 [1.382]	27.400 [1.0787]	24.500 [0.9646]	30.50 [1.201]	24.50 [0.965]	33.00 [1.299]

(* = NOT TOOLED)

UNLESS OTHERWISE SPECIFIED, DIMENSIONS ARE IN MILLIMETERS. TOLERANCES ARE:
DECIMALS ANGLES
X.X: ±0.3 [.01] 2°
X.XX: ±0.13 [.005]
X.XXX: ±0.051 [.0020]

PROPRIETARY NOTE
THIS DOCUMENT CONTAINS CONFIDENTIAL AND PROPRIETARY INFORMATION AND ALL DESIGN, MANUFACTURING, REPRODUCTION, USE, PATENT RIGHTS AND SALES RIGHTS ARE EXPRESSLY RESERVED BY SAMTEC, INC. THIS DOCUMENT SHALL NOT BE DISCLOSED, IN WHOLE OR PART, TO ANY UNAUTHORIZED PERSON OR ENTITY NOR REPRODUCED, TRANSFERRED OR INCORPORATED IN ANY OTHER PROJECT IN ANY MANNER WITHOUT THE EXPRESS WRITTEN CONSENT OF SAMTEC, INC.



520 PARK EAST BLVD, NEW ALBANY, IN 47150
PHONE: 812-944-6733 FAX: 812-948-5047
e-Mail info@SAMTEC.com code 55322

MATERIAL: DO NOT SCALE DRAWING SHEET SCALE: 4:1
INSULATOR: LCP, COLOR: BLACK
TERMINAL & WELD TAB: PHOS BRONZE

DESCRIPTION:
0.5mm PITCH, RA TERMINAL STRIP ASSEMBLY
DWG. NO. **FT5-XX-01-X-RA-X-TR**

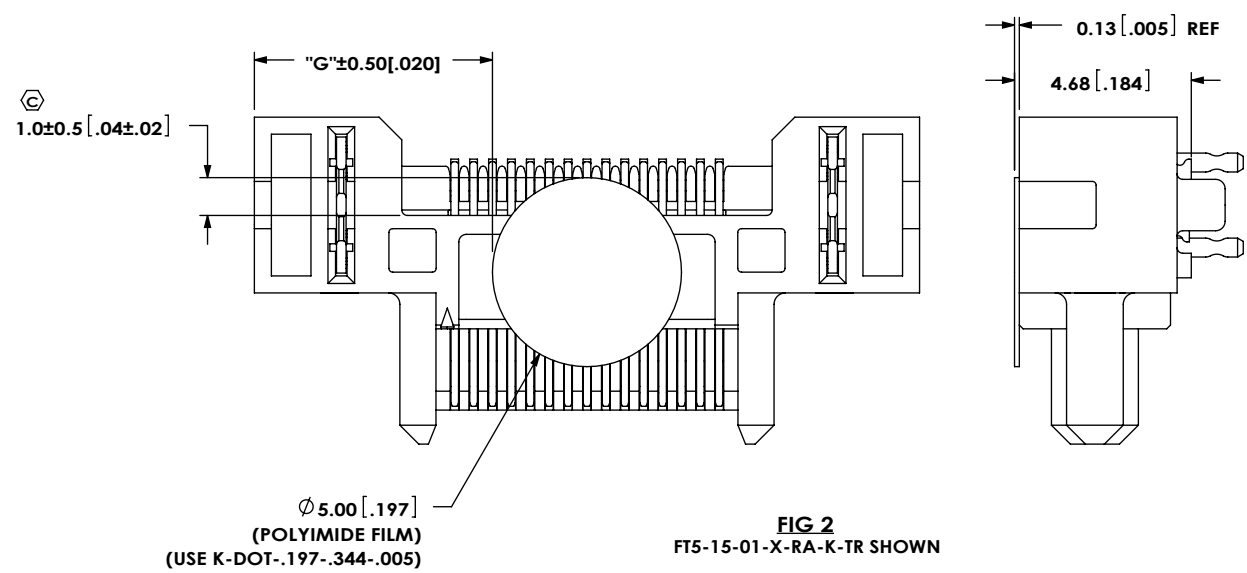
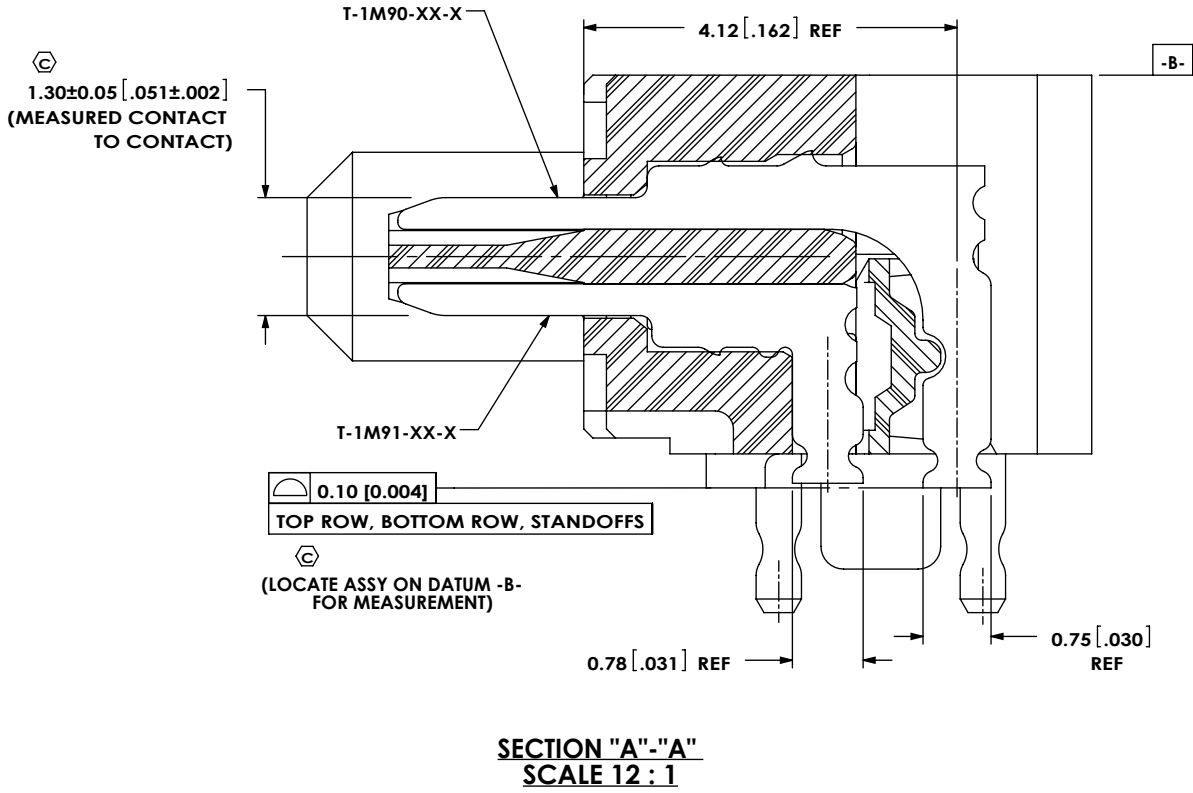


TABLE 2

No. OF POS	"G"	
-15	6.30	[0.248]
-30	10.05	[0.396]
*-35	11.30	[0.445]
*-50	15.05	[0.593]

(* = NOT TOOLED)

PROPRIETARY NOTE
THIS DOCUMENT CONTAINS CONFIDENTIAL AND PROPRIETARY INFORMATION AND ALL DESIGN, MANUFACTURING, REPRODUCTION, USE, PATENT RIGHTS AND SALES RIGHTS ARE EXPRESSLY RESERVED BY SAMTEC, INC. THIS DOCUMENT SHALL NOT BE DISCLOSED, IN WHOLE OR PART, TO ANY UNAUTHORIZED PERSON OR ENTITY NOR REPRODUCED, TRANSFERRED OR INCORPORATED IN ANY OTHER PROJECT IN ANY MANNER WITHOUT THE EXPRESS WRITTEN CONSENT OF SAMTEC, INC.

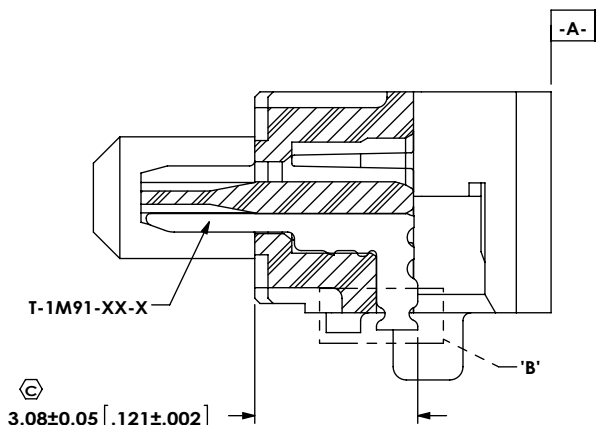
DO NOT SCALE DRAWING
SHEET SCALE: 7:1

samtec
520 PARK EAST BLVD, NEW ALBANY, IN 47150
PHONE: 812-944-6733 FAX: 812-948-5047
e-Mail info@SAMTEC.com code 55322

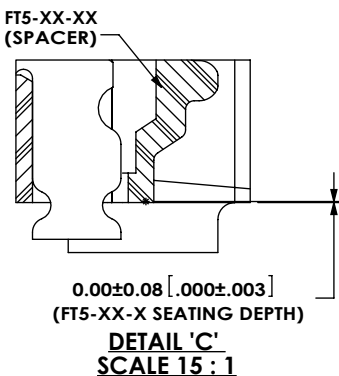
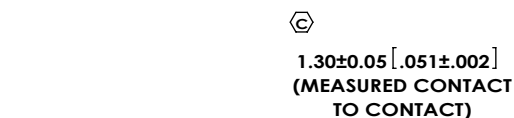
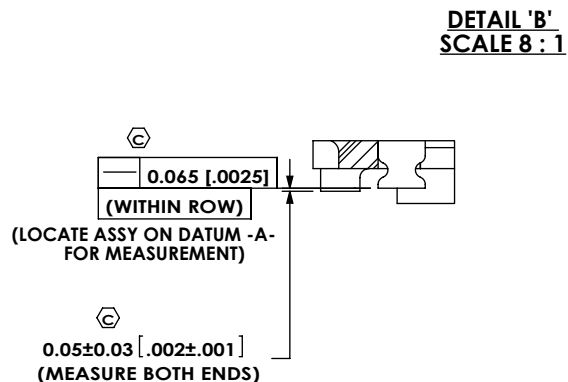
DESCRIPTION:
0.5mm PITCH, RA TERMINAL STRIP ASSEMBLY

DWG. NO.
FT5-XX-01-X-RA-X-TR

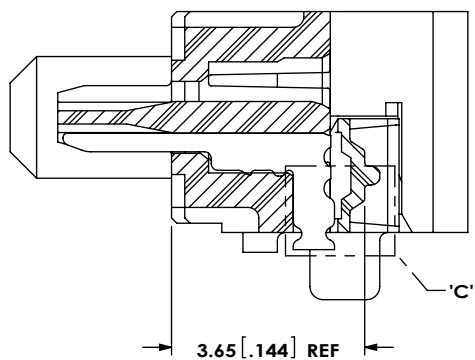
BY: KNOWLDEN 05/18/2010 SHEET 2 OF 3



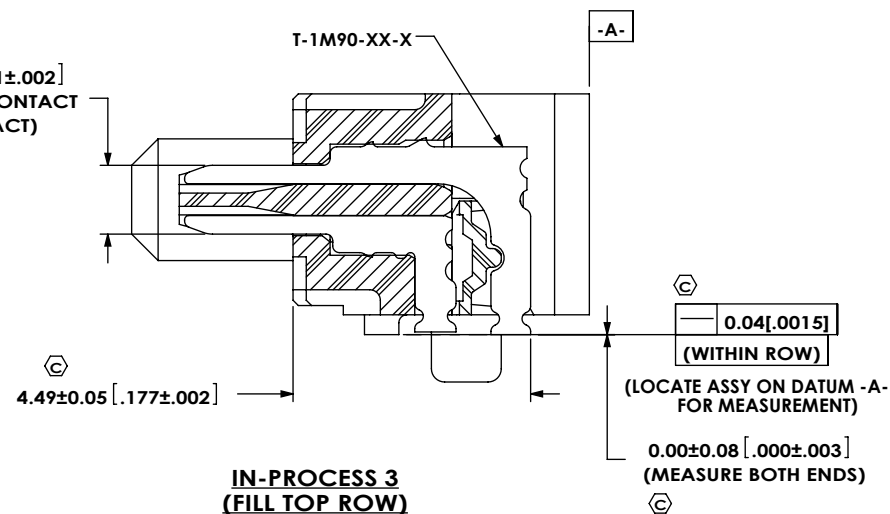
**IN-PROCESS 1
(FILL BOTTOM ROW)**



**DETAIL 'C'
SCALE 15:1**



**IN-PROCESS 2
(FILL FT5-XX-X)**



**IN-PROCESS 3
(FILL TOP ROW)**

PROPRIETARY NOTE
THIS DOCUMENT CONTAINS CONFIDENTIAL AND PROPRIETARY INFORMATION AND ALL DESIGN, MANUFACTURING, REPRODUCTION, USE, PATENT RIGHTS AND SALES RIGHTS ARE EXPRESSLY RESERVED BY SAMTEC, INC. THIS DOCUMENT SHALL NOT BE DISCLOSED, IN WHOLE OR PART, TO ANY UNAUTHORIZED PERSON OR ENTITY NOR REPRODUCED, TRANSFERRED OR INCORPORATED IN ANY OTHER PROJECT IN ANY MANNER WITHOUT THE EXPRESS WRITTEN CONSENT OF SAMTEC, INC.

DO NOT SCALE DRAWING

SHEET SCALE: 7:1



520 PARK EAST BLVD, NEW ALBANY, IN 47150
PHONE: 812-944-6733 FAX: 812-948-5047
e-Mail info@SAMTEC.com code 55322

DESCRIPTION:
0.5mm PITCH, RA TERMINAL STRIP ASSEMBLY

DWG. NO.
FT5-XX-01-X-RA-X-TR

BY: KNOWLDEN 05/18/2010 SHEET 3 OF 3