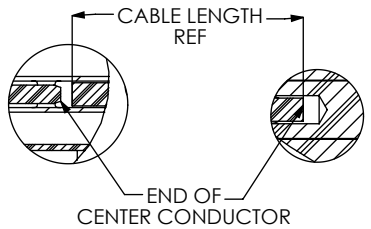


THIS PRODUCT MANUFACTURED WITH LEAD-FREE PROCESSING

DO NOT SCALE FROM THIS PRINT

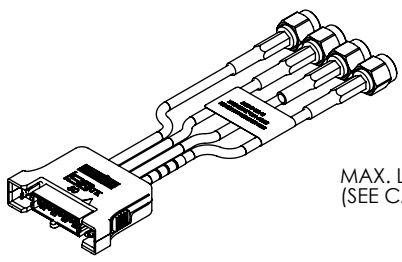
DESIGNED & DIMENSIONED IN MILLIMETERS [INCHES]

IJ5H-XX-XXXX-X-X-XXXXX



DETAIL 'A' SCALE 6:1

DETAIL 'B' SCALE 6:1



No OF POSITIONS
 -01: 1 POSITION
 -02: 2 POSITIONS
 -04: 4 POSITIONS
 -06: 6 POSITIONS
 -08: 8 POSITIONS
 (SEE TABLE 1)

ASSEMBLY LENGTH
 -0300 TO -1000 (MILLIMETERS)
 MAX. LENGTH: 1000 [39.40] (SEE NOTE 6)
 (SEE CABLE LENGTH FORMULA FOR PREP LENGTH)

END 2 PLATING OPTION
 1: GOLD ALL COMPONENTS
 2: GOLD/NICKEL COMBINATION

END 2 OPTION
 -01SP: SMA-P-C-X-ST-CA1 (SEE SHEET 2)
 -02SP: MCX-P-C-XX-ST-CA1 (SEE SHEET 2)
 -03SP: MMCX-P-X-XX-ST-CA1 (SEE SHEET 2)
 -07SP: SMB5-P-C-XX-ST-CA1 (SEE SHEET 2)
 (SEE TABLE 2)

END 1 PLATING OPTION
 -S: 30μ" GOLD

CABLE TYPE
 -2: CCA-3T6

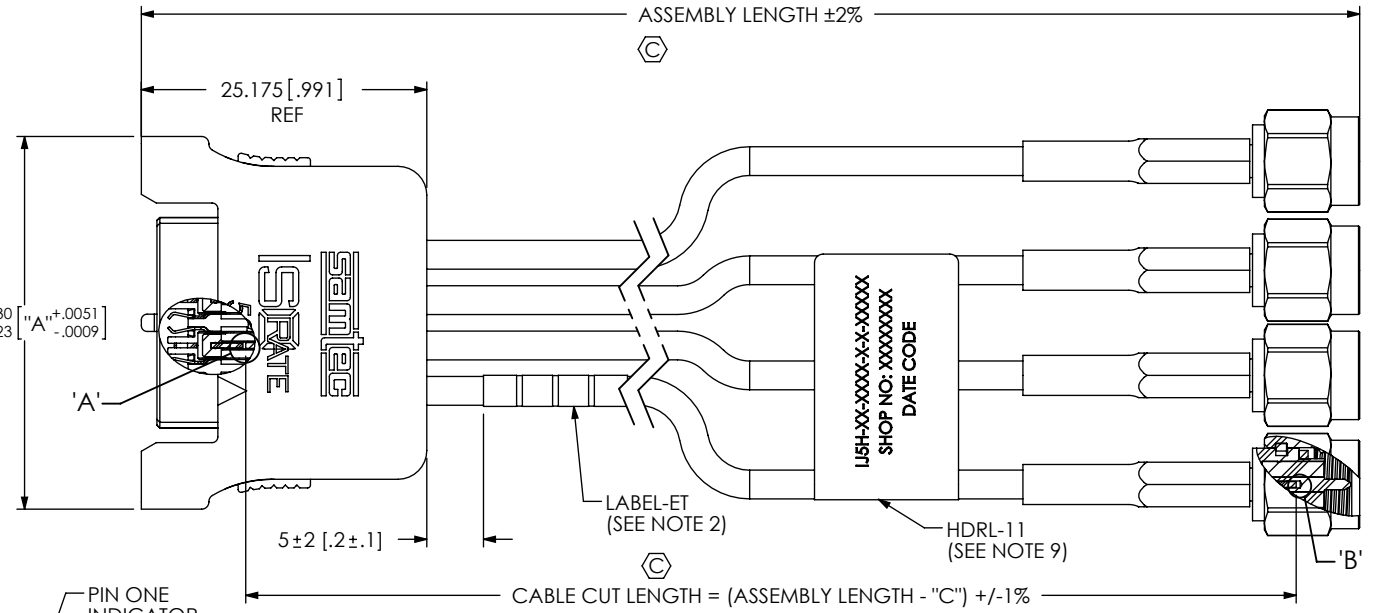
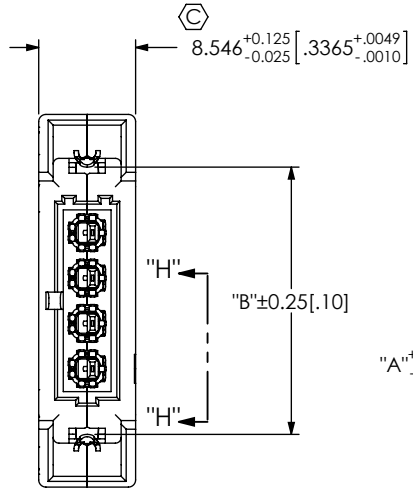
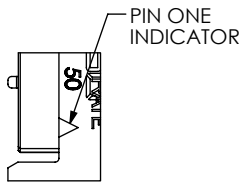


TABLE 1

No. OF POS	"A"	"B"
-01	20.87 [0.82]	11.57 [0.46]
-02	24.87 [0.98]	15.57 [0.61]
-04	32.87 [1.29]	23.57 [0.93]
-06	40.87 [1.61]	31.57 [1.24]
-08	48.87 [1.92]	39.57 [1.56]



SECTION "H"-"H" SCALE 1:1

FIG 1 IJ5H-04-XXXX-S-2-01SPX SHOWN

TABLE 2

END 2 OPTION	"C"
-01SP	15.5 [0.61]
-02SP	17.2 [0.68]
-03SP	14.0 [0.55]
-07SP	17.5 [0.69]

NOTES:

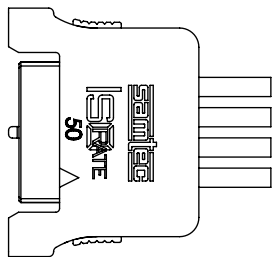
- ⊕ REPRESENTS A CRITICAL DIMENSION.
- ALL ASSEMBLIES TO BE 100% ELECTRICALLY TESTED FOR SHORTS AND OPENS.
- ALL ASSEMBLIES TO BE 100% HI-POT TESTED AT 600V.
- PACKAGE ASSEMBLIES IN ANTI-STATIC OR STATIC DISSIPATIVE BAGS.
- NOTE DELETED.
- CABLE LENGTH GREATER THAN 1000mm [39.4"] IS A VALID PART NUMBER BUT IS NOT SUPPORTED BY S.I. TEST DATA.
- NOTE DELETED.
- MEASURE OVER THERMO WELD FEATURES.
- HDRL LABEL TO BE FLAGGED AROUND SINGLE WIRE AND TO BE CENTERED ON CABLE ASM AS SHOWN.

UNLESS OTHERWISE SPECIFIED, DIMENSIONS ARE IN MILLIMETERS [INCHES]. TOLERANCES ARE: DECIMALS ANGLES X.X: ±0.3 [.01] X.XX: ±0.13 [.005] X.XXX: ±0.051 [.0020]	PROPRIETARY NOTE THIS DOCUMENT CONTAINS CONFIDENTIAL AND PROPRIETARY INFORMATION AND ALL DESIGN, MANUFACTURING, REPRODUCTION, USE, PATENT RIGHTS AND SALES RIGHTS ARE EXPRESSLY RESERVED BY SAMTEC, INC. THIS DOCUMENT SHALL NOT BE DISCLOSED, IN WHOLE OR PART, TO ANY UNAUTHORIZED PERSON OR ENTITY NOR REPRODUCED, TRANSFERRED OR INCORPORATED IN ANY OTHER PROJECT IN ANY MANNER WITHOUT THE EXPRESS WRITTEN CONSENT OF SAMTEC, INC.	samtec 520 PARK EAST BLVD, NEW ALBANY, IN 47150 PHONE: 812-944-6733 FAX: 812-948-5047 e-Mail info@SAMTEC.com code 53322
MATERIAL: DO NOT SCALE DRAWING COVERS: THERMOPLASTIC, COLOR: BLACK SHIELD: COPPER ALLOY CONTACT: COPPER ALLOY DIELECTRIC: LCP, COLOR: BLACK	SHEET SCALE: 3:2	DESCRIPTION: CABLE ASSEMBLY, IJ5 HYBRID
DWG. NO. IJ5H-XX-XXXX-X-X-XXXXX		BY: L WOOLLEY 7/22/2010 SHEET 1 OF 2

END 1

(IJ5C CONNECTOR)

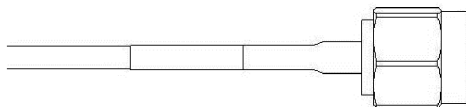
(USE DRAWING No. IJ5C-XX-XXXX-X-X-XXX-X-XX FOR ASSEMBLY INSTRUCTIONS)



NOTE: ALL CRITICAL DIMENSIONS ON IJ5C-XX-XXXX-X-X-XXX-X-XX THAT APPLY MUST BE VERIFIED.

-01SP
(STRAIGHT PLUG)

(USE DRAWING No. SMA-P-C-X-ST-CA1 FOR ASSEMBLY INSTRUCTIONS)



PLATING
1: 30µ" MIN. GOLD CENTER CONTACT
3µ" MIN. GOLD OUTER CONTACT
3µ" MIN. GOLD REMAINING METAL PARTS
(END CONNECTOR P/N: SMA-P-C-H-ST-CA1)

NOTE: ALL CRITICAL DIMENSIONS ON SMA-P-C-X-ST-CA1 THAT APPLY MUST BE VERIFIED.

-02SP
(STRAIGHT PLUG)

(USE DRAWING No. MCX-P-C-XX-ST-CA1 FOR ASSEMBLY INSTRUCTIONS)



PLATING OPTIONS
1: 30µ" MIN. GOLD CENTER CONTACT
3µ" MIN. GOLD OUTER CONTACT
3µ" MIN. GOLD REMAINING METAL PARTS
(END CONNECTOR P/N: MCX-P-C-H-ST-CA1)
2: 30µ" MIN. GOLD CENTER CONTACT
3µ" MIN. GOLD OUTER CONTACT
100µ" MIN. NICKEL REMAINING METAL PARTS
(END CONNECTOR P/N: MCX-P-C-HN-ST-CA1)

NOTE: ALL CRITICAL DIMENSIONS ON MCX-P-C-XX-ST-CA1 THAT APPLY MUST BE VERIFIED.

-03SP
(STRAIGHT PLUG)

(USE DRAWING No. MMCX-P-C-XX-ST-CA1 FOR ASSEMBLY INSTRUCTIONS)

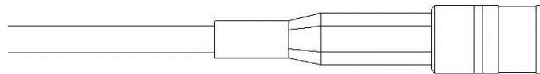


PLATING OPTIONS
1: 30µ" MIN. GOLD CENTER CONTACT
3µ" MIN. GOLD OUTER CONTACT
3µ" MIN. GOLD REMAINING METAL PARTS
(END CONNECTOR P/N: MMCX-P-C-H-ST-CA1)
2: 30µ" MIN. GOLD CENTER CONTACT
3µ" MIN. GOLD OUTER CONTACT
100µ" MIN. NICKEL REMAINING METAL PARTS
(END CONNECTOR P/N: MMCX-P-C-HN-ST-CA1)

NOTE: ALL CRITICAL DIMENSIONS ON MMCX-P-C-XX-ST-CA1 THAT APPLY MUST BE VERIFIED.

-07SP
(STRAIGHT PLUG)

(USE DRAWING No. SMB5-P-C-XX-ST-CA1 FOR ASSEMBLY INSTRUCTIONS)



PLATING OPTIONS
1: 30µ" MIN. GOLD CENTER CONTACT
3µ" MIN. GOLD OUTER CONTACT
3µ" MIN. GOLD REMAINING METAL PARTS
(END CONNECTOR P/N: SMB5-P-C-H-ST-CA1)
2: 30µ" MIN. GOLD CENTER CONTACT
3µ" MIN. GOLD OUTER CONTACT
100µ" MIN. NICKEL REMAINING METAL PARTS
(END CONNECTOR P/N: SMB5-P-C-HN-ST-CA1)

NOTE: ALL CRITICAL DIMENSIONS ON SMB5-P-C-XX-ST-CA1 THAT APPLY MUST BE VERIFIED.

PROPRIETARY NOTE

THIS DOCUMENT CONTAINS CONFIDENTIAL AND PROPRIETARY INFORMATION AND ALL DESIGN, MANUFACTURING, REPRODUCTION, USE, PATENT RIGHTS AND SALES RIGHTS ARE EXPRESSLY RESERVED BY SAMTEC, INC. THIS DOCUMENT SHALL NOT BE DISCLOSED, IN WHOLE OR PART, TO ANY UNAUTHORIZED PERSON OR ENTITY NOR REPRODUCED, TRANSFERRED OR INCORPORATED IN ANY OTHER PROJECT IN ANY MANNER WITHOUT THE EXPRESS WRITTEN CONSENT OF SAMTEC, INC.

DO NOT SCALE DRAWING

SHEET SCALE: 1:1



520 PARK EAST BLVD, NEW ALBANY, IN 47150
PHONE: 812-944-6733 FAX: 812-948-5047
e-Mail info@SAMTEC.com code 55322

DESCRIPTION: CABLE ASSEMBLY, IJ5 HYBRID

DWG. NO. IJ5H-XX-XXXX-X-X-XXXXX

BY: L WOOLLEY 7/22/2010 SHEET 2 OF 2