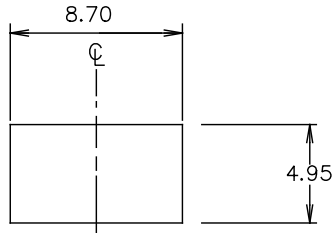
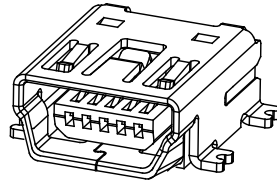


REVISION S

DO NOT SCALE FROM THIS PRINT



SUGGESTED PANEL CUTOUT DIMENSIONS



MUSB-05-X-A-SM-A-X-XX

NO. OF CONTACTS
-05

PLATING

-F: 1 μ" FLASH GOLD ON CONTACT AREA, BRIGHT ACID TIN ON TAIL
-S: 30 μ" SELECTIVE GOLD ON CONTACT AREA, BRIGHT ACID TIN ON TAIL

OPTION

-TR: TAPE & REEL PACKAGING (LEAVE BLANK FOR TRAY PACKAGING)
-K: KAPTON PAD

E & I OPTION

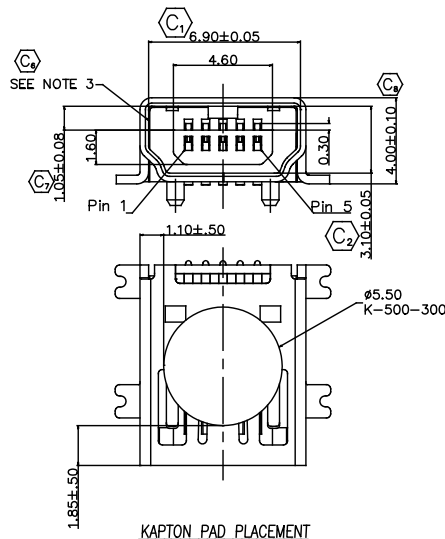
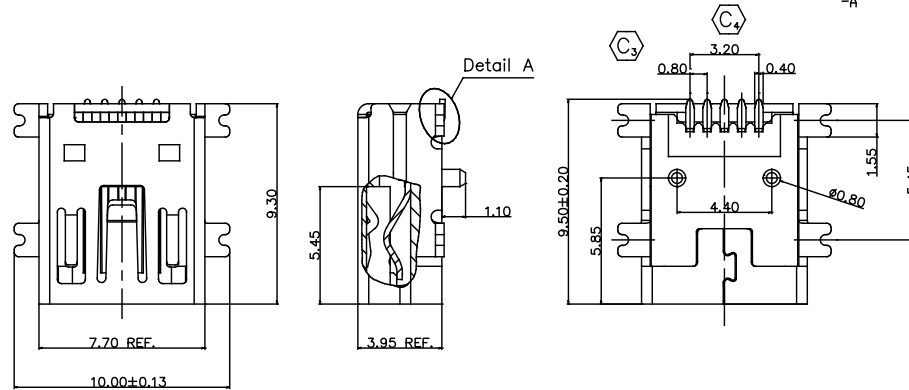
-R: RoHS COMPLIANT

ALIGNMENT PINS

RA TERMINATION

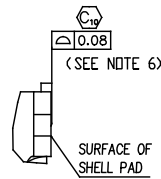
-SM SURFACE MOUNT

TYPE
-A

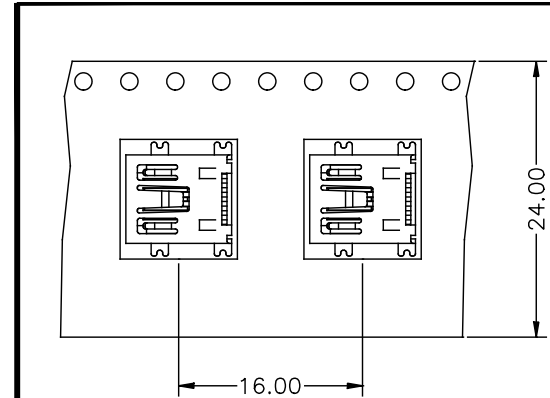
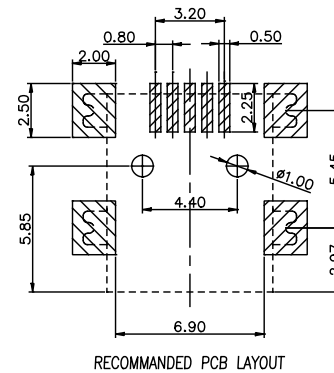


NOTES:

1. (C) REPRESENTS CRITICAL DIMENSION.
2. NOTE DELETED.
3. CONFIRM THAT PARTS FACE MATCH THIS PRINT.
4. ALL PARTS ARE RoHS COMPLIANT AS OF REVISION G.
5. PARTS TO BE PACKAGED LEADS DOWN IN TRAYS.
6. COPLANARITY MEASUREMENT SHOULD INCLUDE ALL USB TAILS AND SHELL TABS.



DETAIL A
SCALE: 2:1



USER DIRECTION OF UN-REELING
POCKET NOT DETAILED

-TR: TAPE & REEL OPTION

UNLESS OTHERWISE SPECIFIED, DIMENSIONS ARE IN MM. TOLERANCES ARE:

DECIMALS ANGLES
X: ±.25 2°
XX: ±.13
XXX: ±.05

PROPRIETARY NOTE

THIS DOCUMENT CONTAINS CONFIDENTIAL AND PROPRIETARY INFORMATION AND ALL DESIGN, MANUFACTURING, REPRODUCTION, USE, PATENT RIGHTS AND SALES RIGHTS ARE EXPRESSLY RESERVED BY SAMTEC, INC. THIS DOCUMENT SHALL NOT BE DISCLOSED, IN WHOLE OR PART, TO ANY UNAUTHORIZED PERSON OR ENTITY NOR REPRODUCED, TRANSMITTED OR INCORPORATED IN ANY OTHER PROJECT IN ANY MANNER WITHOUT THE EXPRESS WRITTEN CONSENT OF SAMTEC, INC.

DO NOT SCALE DRAWING
INSULATOR: PA6T, RATED UL 94V-0, BLACK
CONTACT: PHOS BRONZE
SHELL: CU/NI PLATED BRASS

SHEET SCALE: 1:2

MAX FLASH ALLOWED: .051
MAX GATE VESTIGE: .051
F:\DWG\EXISP\ASSEMBLY\N\USB

samtec

520 PARK EAST BLVD. NEW ALBANY, IN 47150
(812) 944-6733 P.O. BOX 1147 TWX: 810-540-4085

DESCRIPTION:
Mini USB, RA, 5 Pin, Type A, Single, SMT

DWG. NO.
MUSB-05-X-A-SM-A-X-XX

BY: J. RILEY 03/24/04 SHEET 1 OF 1

CODE: 55322