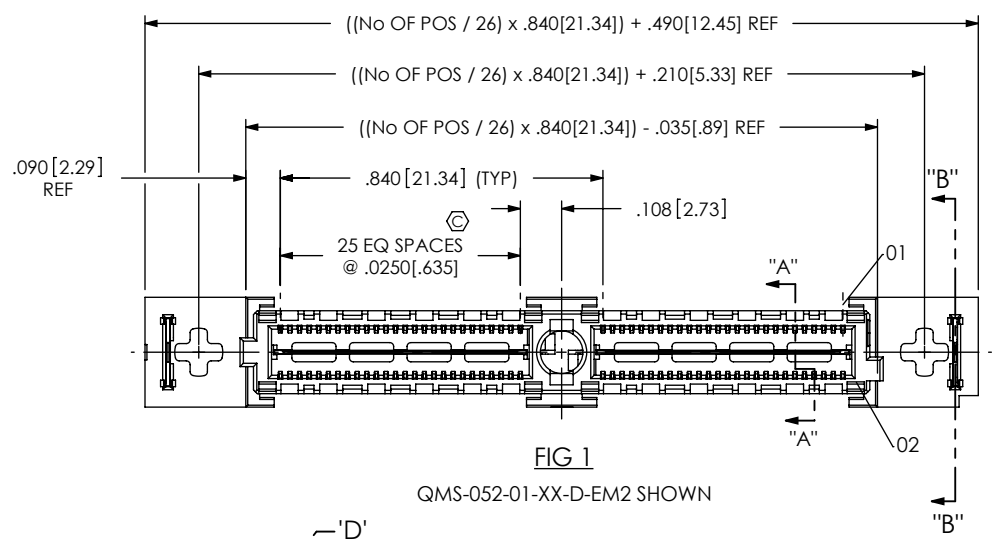


DO NOT SCALE FROM THIS PRINT



QMS-XXX-XX-XX-D-EM2-XXX-XX

No OF POSITIONS
 -026, -052, -078,
 -104, * -130
 (PER ROW)

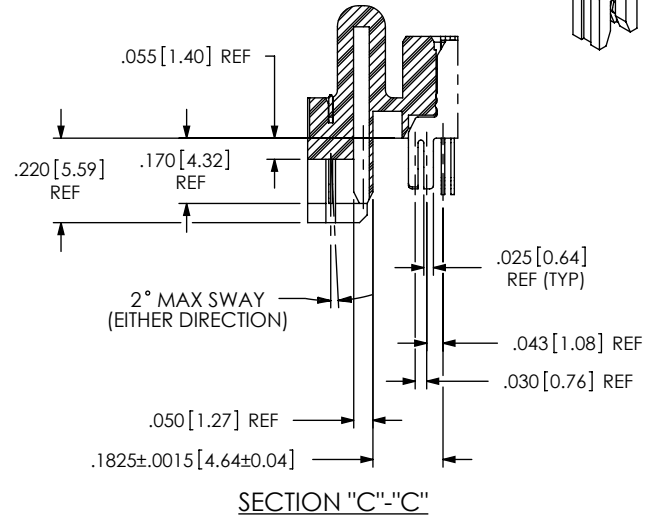
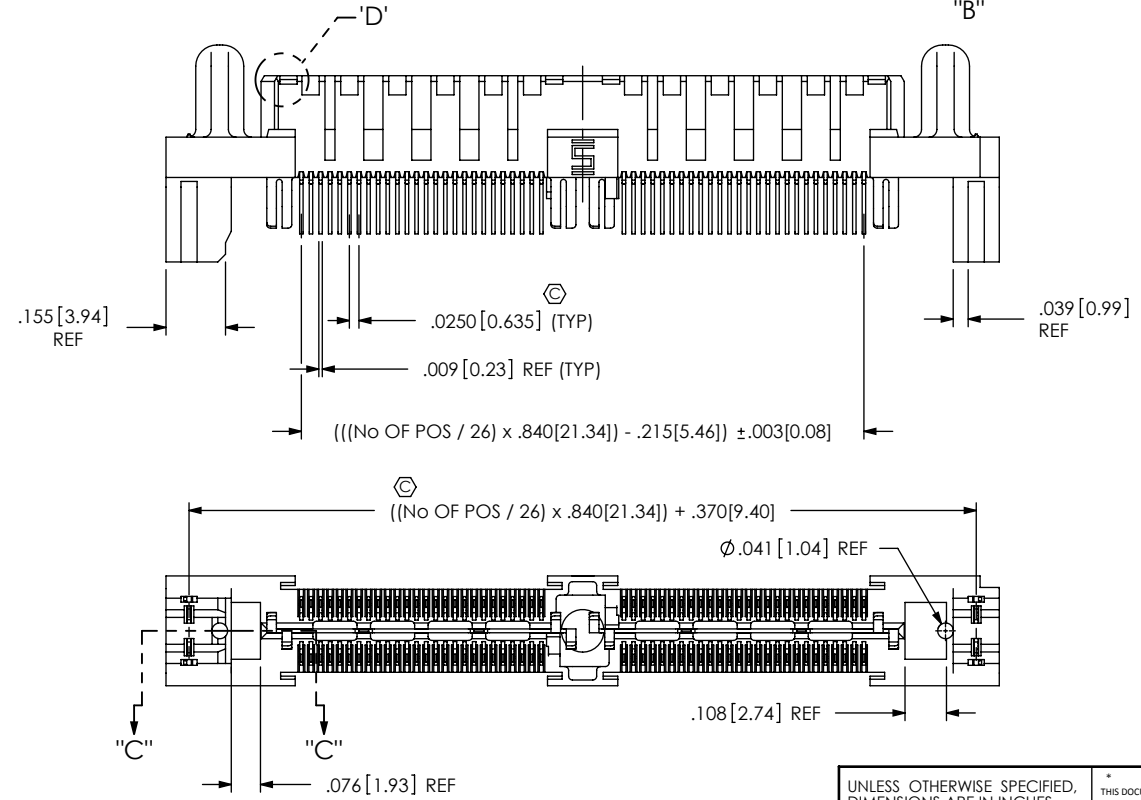
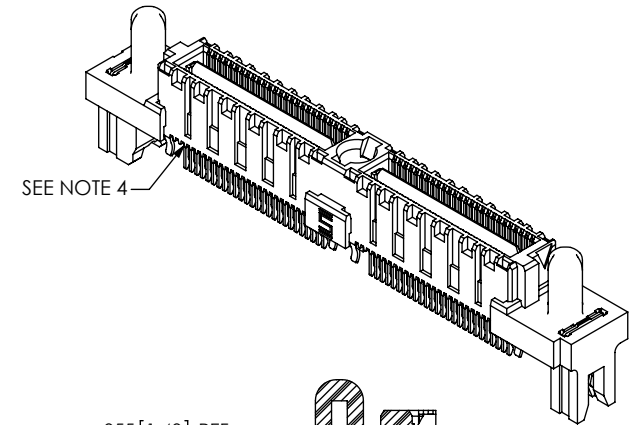
LEAD STYLE
 -01

PACKAGING OPTION
 -TR: TAPE AND REEL PACKAGING
 (-026 & -052 WITH NO OPTIONS
 (-026 & -052 WITH -PC4)
 (-026 WITH -PC8)


POWER COMBO OPTION
 -PC4: 4 POWER POS PER END
 -PC8: 8 POWER POS PER END
 (SEE FIG. 2, SHEET 3)
 [-PCX AVAILABLE ON POSITIONS
 -026, -052 & -078 ONLY]

-EM2: EDGE MOUNT

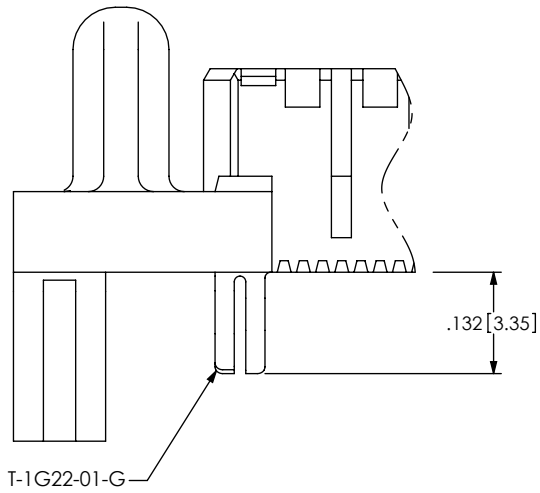
ROW SPECIFICATION
 -D: DOUBLE



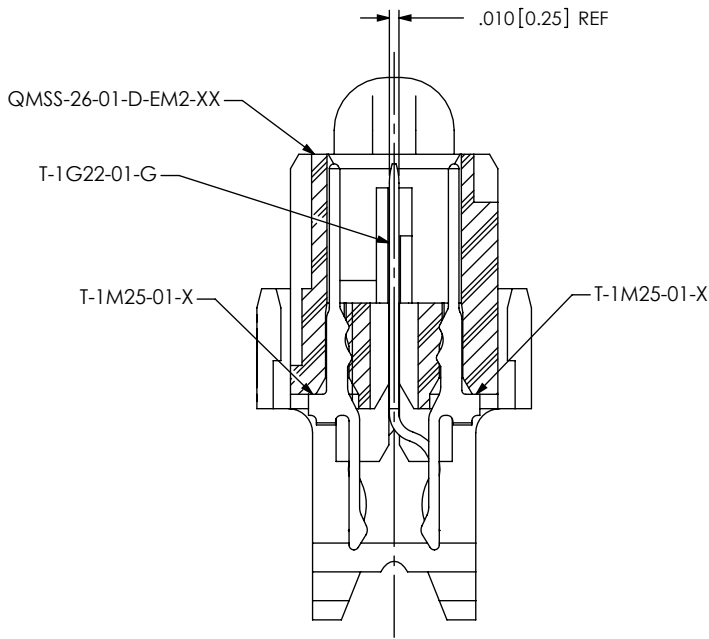
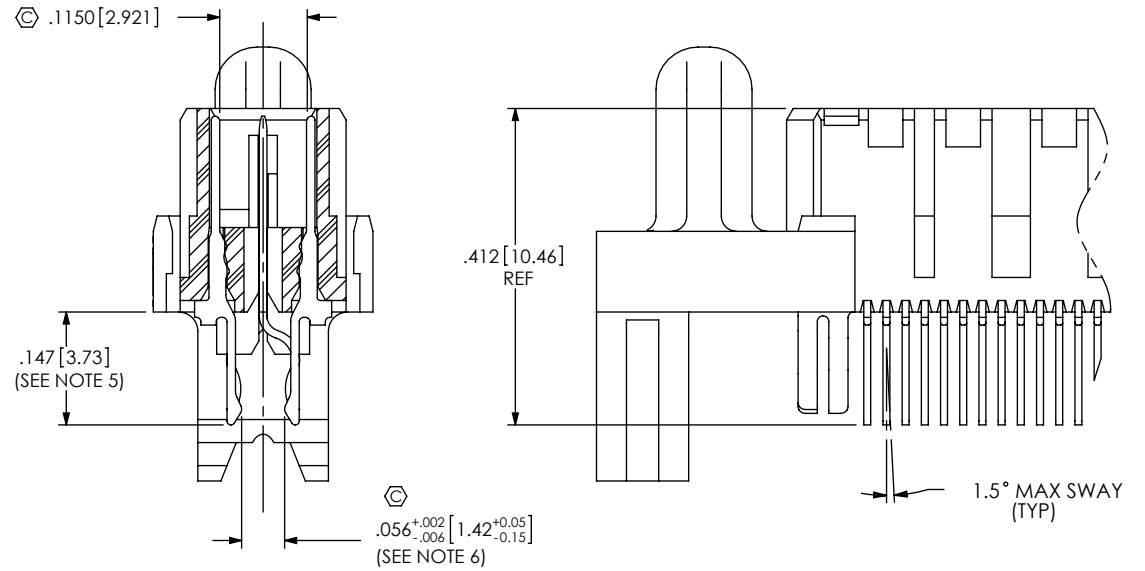
- NOTES:
- ⊕ REPRESENTS A CRITICAL DIMENSION.
 - MAXIMUM BURR ALLOWANCE: $.0015[0.038]$.
 - MINIMUM PUSHOUT FORCE: SIGNAL: .5 LB, GROUND: 1 LB.
 - TERMINALS IN ALL POSITIONS TO BE SHEARED.
 - MAXIMUM VARIANCE OF $.002[0.05]$.
 - DIMENSION APPLIES TO GROUND PLANE & SIGNAL PINS.
 - PARTS TO BE PACKAGED IN TRAYS AS STANDARD

UNLESS OTHERWISE SPECIFIED, DIMENSIONS ARE IN INCHES. TOLERANCES ARE: DECIMALS ANGLES .XX: $\pm .01$ [.3] 2° .XXX: $\pm .005$ [.13] .XXXX: $\pm .0020$ [.051]	* PROPRIETARY NOTE * THIS DOCUMENT CONTAINS CONFIDENTIAL AND PROPRIETARY INFORMATION AND ALL DESIGN, MANUFACTURING, REPRODUCTION, USE, PATENT RIGHTS AND SALES RIGHTS ARE EXPRESSLY RESERVED BY SAMTEC, INC. THIS DOCUMENT SHALL NOT BE DISCLOSED, IN WHOLE OR PART, TO ANY UNAUTHORIZED PERSON OR ENTITY NOR REPRODUCED, TRANSFERRED OR INCORPORATED IN ANY OTHER PROJECT IN ANY MANNER WITHOUT THE EXPRESS WRITTEN CONSENT OF SAMTEC, INC.	 520 PARK EAST BLVD, NEW ALBANY, IN 47150 PHONE: 812-944-6733 FAX: 812-948-5047 e-Mail: info@SAMTEC.com code 55322

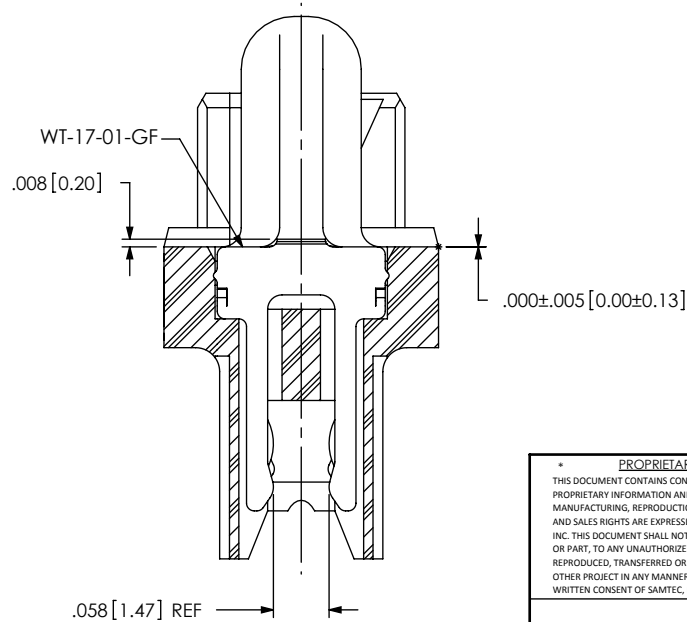
IN-PROCESS 1



IN-PROCESS 2

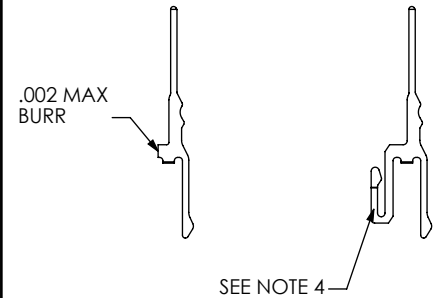


SECTION "A"-"A"
SCALE 5 : 1



SECTION "B"-"B"
SCALE 5 : 1

TERMINAL DETAILS



PROPRIETARY NOTE
THIS DOCUMENT CONTAINS CONFIDENTIAL AND PROPRIETARY INFORMATION AND ALL DESIGN, MANUFACTURING, REPRODUCTION, USE, PATENT RIGHTS AND SALES RIGHTS ARE EXPRESSLY RESERVED BY SAMTEC, INC. THIS DOCUMENT SHALL NOT BE DISCLOSED, IN WHOLE OR PART, TO ANY UNAUTHORIZED PERSON OR ENTITY NOR REPRODUCED, TRANSFERRED OR INCORPORATED IN ANY OTHER PROJECT IN ANY MANNER WITHOUT THE EXPRESS WRITTEN CONSENT OF SAMTEC, INC.



520 PARK EAST BLVD, NEW ALBANY, IN 47150
PHONE: 812-944-6733 FAX: 812-948-5047
e-Mail info@SAMTEC.com code 55322

DO NOT SCALE DRAWING

SHEET SCALE: 2.5:1

DESCRIPTION:
.635mm DOUBLE ROW EDGE MOUNT TERMINAL STRIP

DWG. NO.
QMS-XXX-XX-XX-D-EM2-XXX-XX

BY: E.L.S. 6/18/2003 SHEET 2 OF 3

