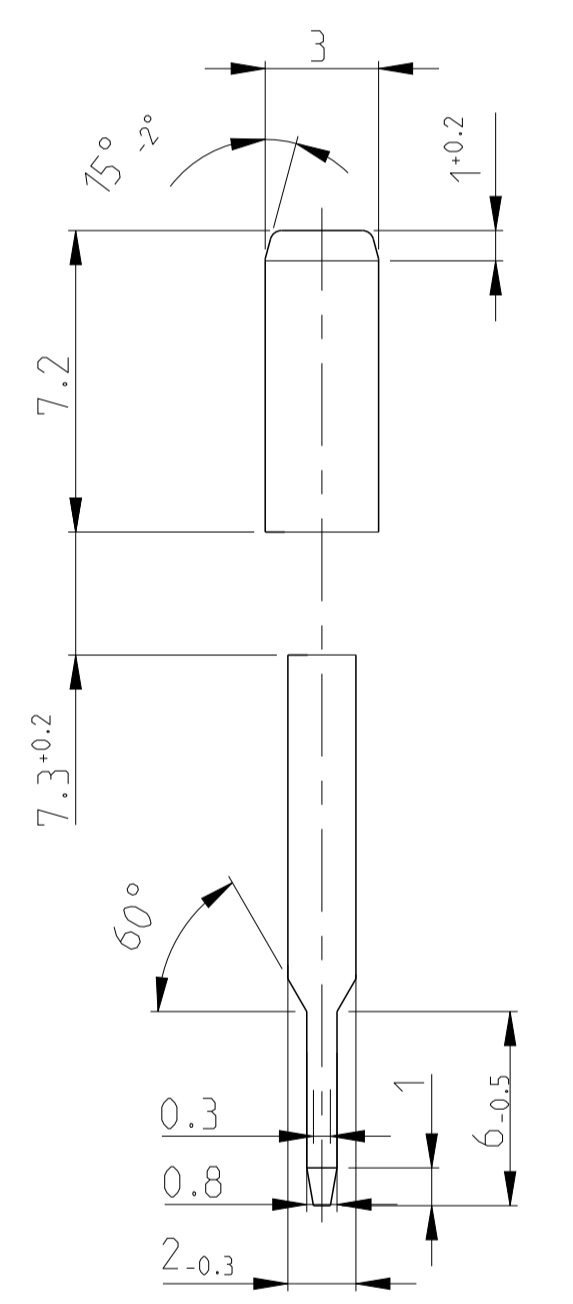
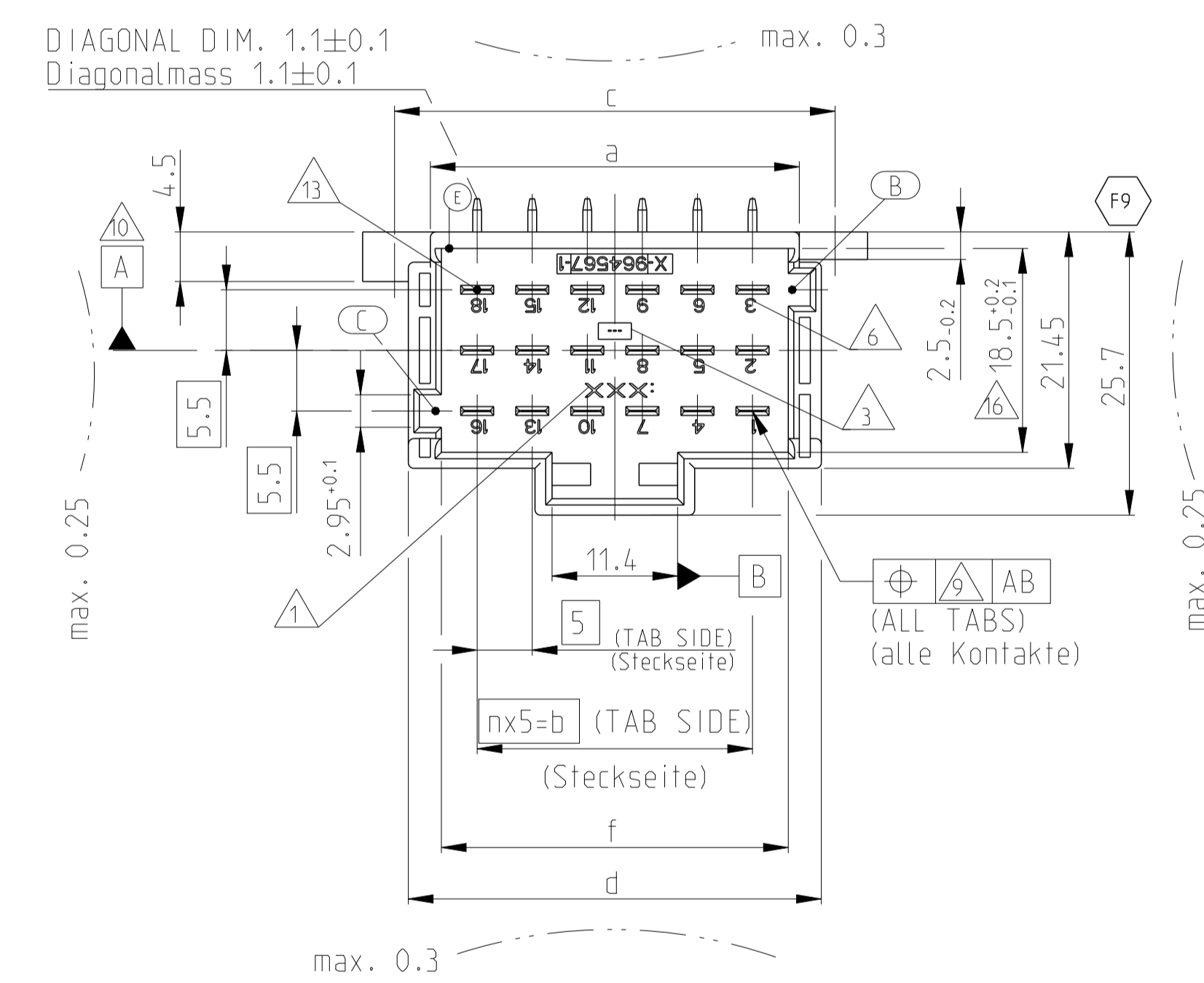
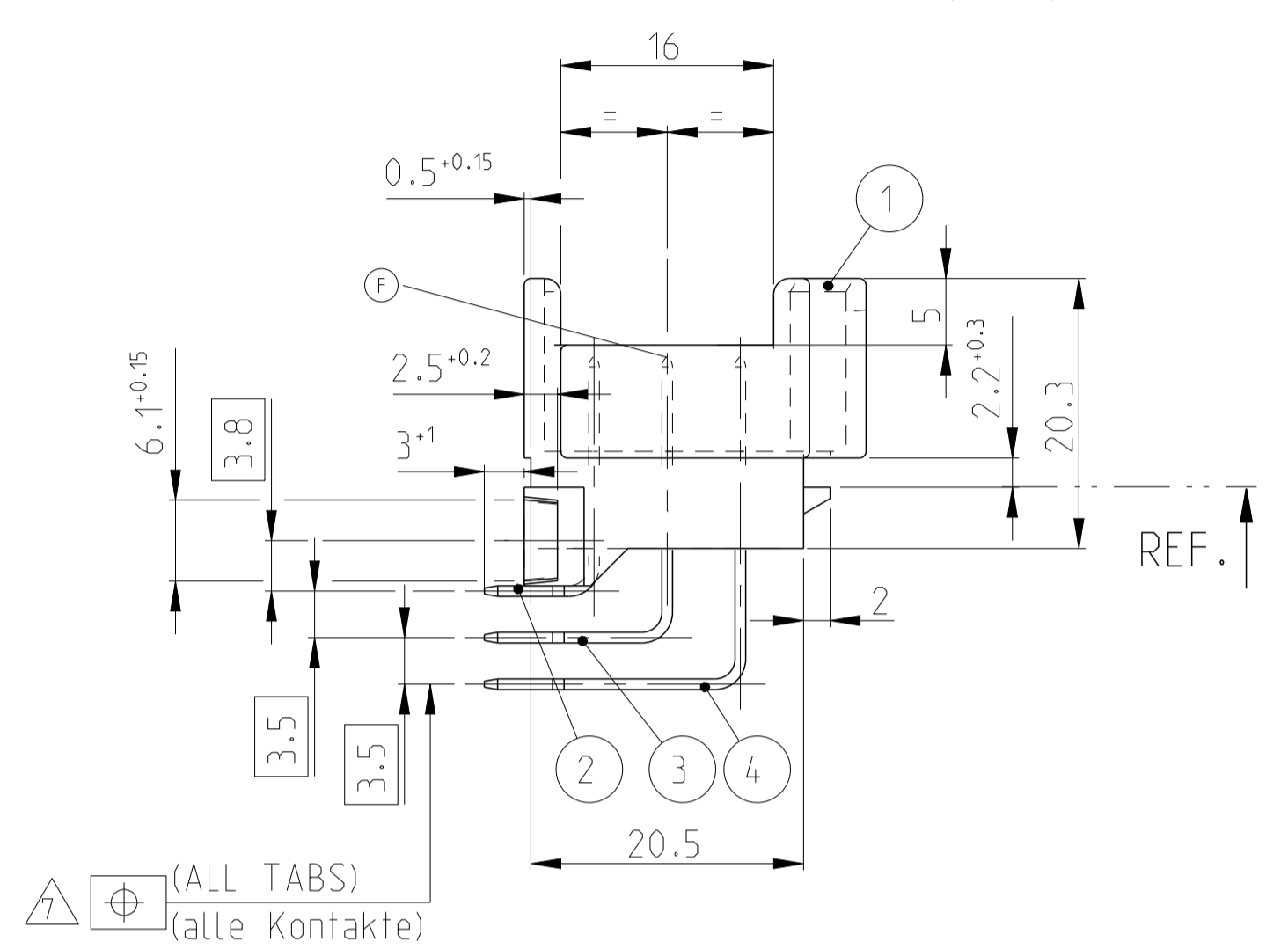
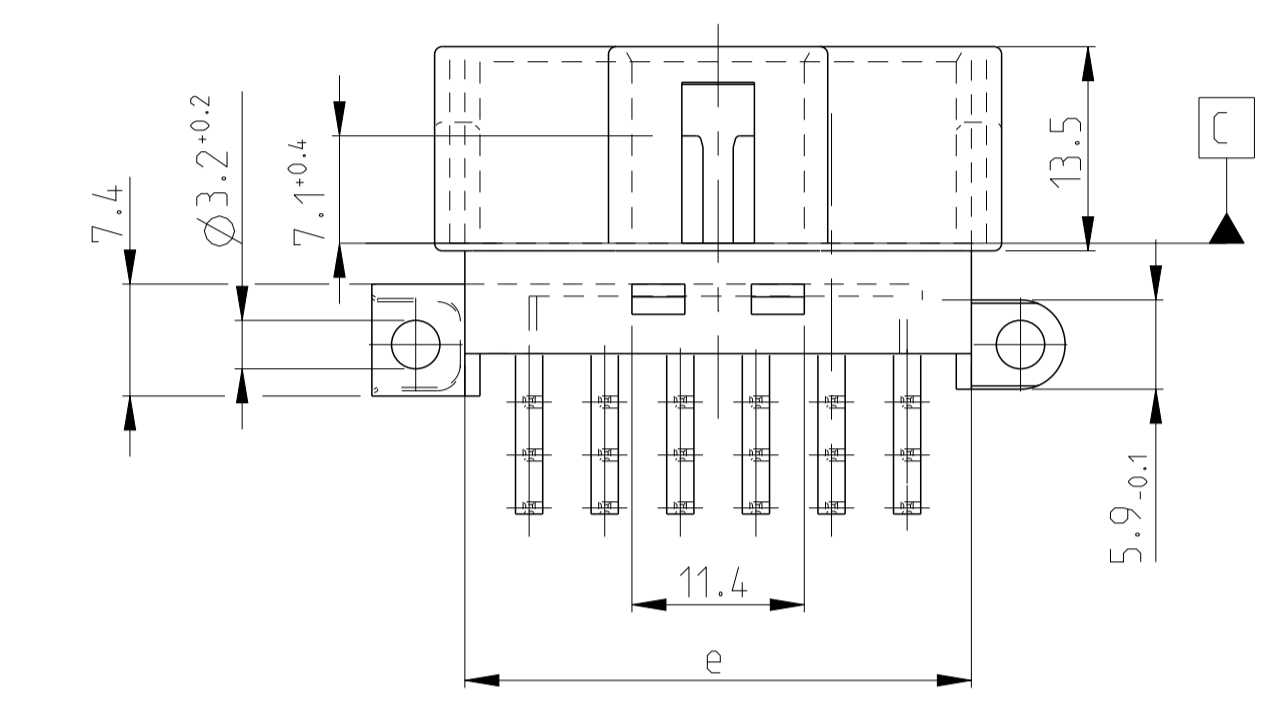
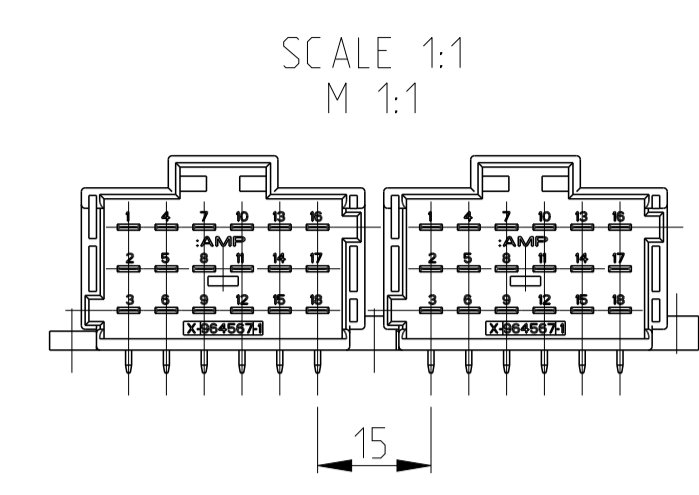
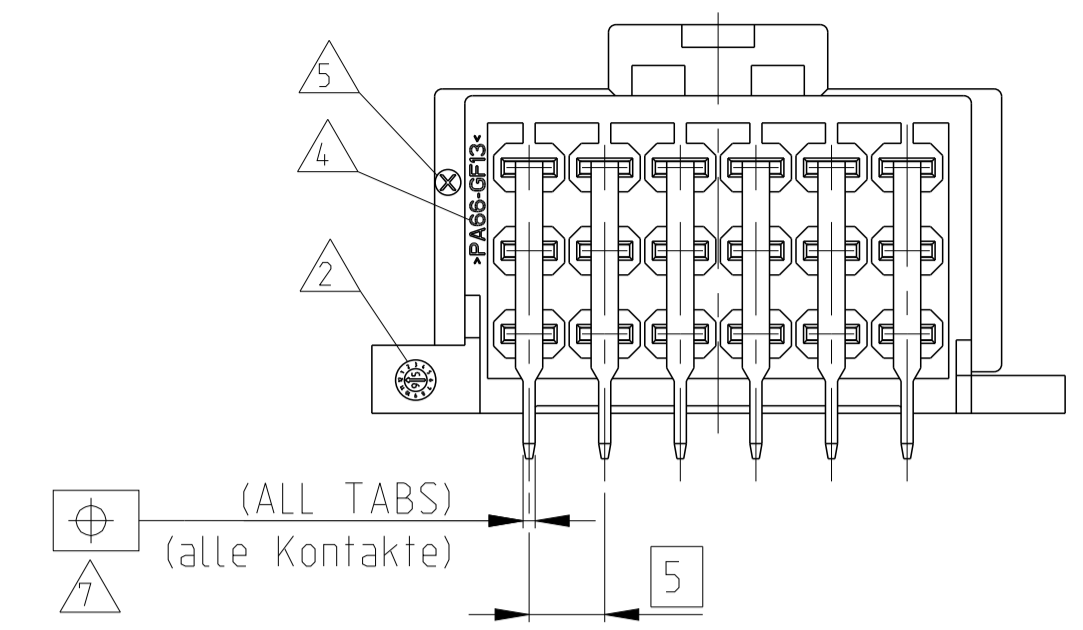


LOC	DIST	REV	DATE	BY	CHKD	APVD
A1	-	F6	30OCT2014	Ho.	Krauss	
		F7	05SEP2016	MAH.	BECK	
		F8	28AUG2017	FRAN	BECK	
		F9	05SEP2017	FRAN	BECK	

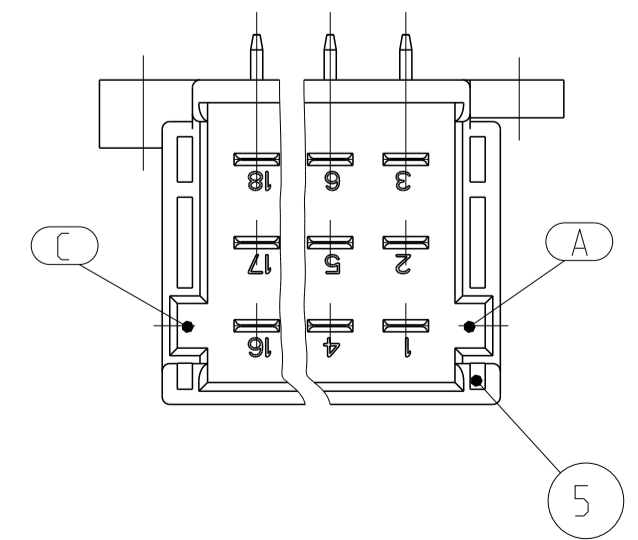
NOTES

- Bemerkungen
- ACTIVE COMPANY-LOGO. PART NUMBER HOUSING
Aktuelles Firmenlogo und Gehäuse-Teilernr.
 - PRODUCTION DATE HOUSING
Produktionsdatum Gehäuse
 - MOULD REVISION STATUS
Aenderungsstand Spritzwerkzeuge
 - MATERIAL MARKING IN ACC. TO VDA 260
Werkstoffkennzeichnung nach
 - MOULD CAVITY MARKING
Nestmarkierung
 - CAVITY MARKING
Kammerbezeichnung
 - CHECK WITH GAUGE NO. 90-244742 (SOLDER TABS SIDE, DIM'S NOT IN GENERAL TOLERANCES)
Pruefung mit Stecklehre 90-244742 (Loetseite, Masse unterliegen nicht der Allgemeintoleranz)
 - REFERENCE PLANE A RESULTS FROM AVERAGE OF TAB POSITIONS OF MIDDLE ROW AT THE LEVEL OF REFERENCE PLANE C
Bezugsebene A gemittelt aus Positionen der Tabs der mittleren Reihe auf Niveau der Bezugsebene C
 - LINEAR INCREASING FROM Ø0.2 AT THE LEVEL OF REFERENCE PLANE C UP TO Ø0.4 AT THE TOP OF TABS
Linear zunehmend von Ø0.2 auf Niveau Bezugsebene C bis auf Ø0.4 an Tabspitzen
 - ALL SYMMETRIC DIMENSIONS \equiv 0.15
Alle Symmetriemasse
 - SUITABLE MATING CONNECTOR SEE DRAWINGS:
Passende Gegenstecker siehe Zeichnungen:
TE-Nr.: 1355071, 1355073
 - DOMESTIC PACKAGING (GERMANY): PLASTIC TRAY (ANTISTATIC) IN CORRUGATED SHIPPING BOX
Inlands-Verpackung (BRD) : Produkttraeger (antistatisch) in Versandkarton
 - TAB-INTERFACE ON INQUIRY: TE CONNECTIVITY-No.: 114-18230-002
Flachstecker-Ausfuehrung auf Anfrage; TE CONNECTIVITY-Nr.:
 - EXPORT PACKAGING: PLASTIC TRAY (NOT ANTISTATIC) IN CORRUGATED SHIPPING BOX
Export-Verpackung: Produkttraeger (nicht antistatisch) in Versandkarton
 - AVAILABILITY ONLY AFTER RECONSULTING TE CONNECTIVITY
Verfuegbarkeit nur nach Ruecksprache mit TE CONNECTIVITY
 - MEASURED IN THE CORNERS OF THE HOUSING ON THE HOUSING BOTTOM
In den Gehauseecken am Boden gemessen
 - GENERAL PLASTIC SURFACE REQUIREMENTS:
MAXIMUM OFFSET AT PARTING LINE: 0.13 MM
MAXIMUM FLASH: 0.38 MM
Allgemeine Oberflaechenanforderungen an den Kunststoff:
Maximaler Versatz bei Werkzeugtrennlinien: 0.13mm
Maximaler Spritzgrat: 0.38 mm



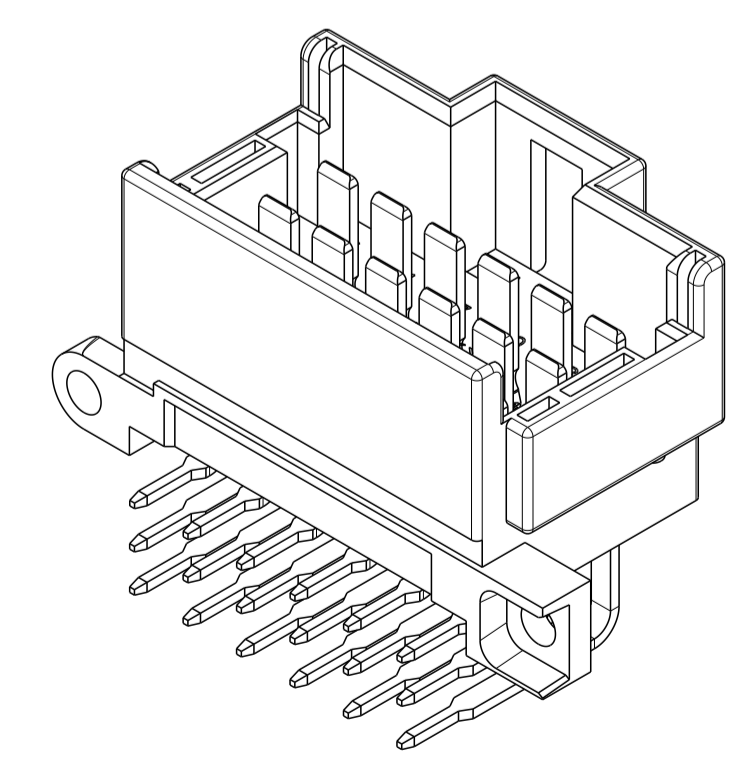
WARPAGE 0.3 MM IS ACCEPTABLE IN THE MIDDLE OF THE HOUSING FOR EACH SIDE WALL. WARPAGE MUST BE SUBSTRACTED FROM NOMINAL DIMENSION VALUE
 Ein Einfall von 0.3 mm ist fuer die Mitte jeder Seitenwand zulaessig. Der Einfall muss vom Nominalmass substrahiert werden.

CODING B
 (GROOVES A-C) AS SHOWN
 (Nuten A-C) wie gezeichnet



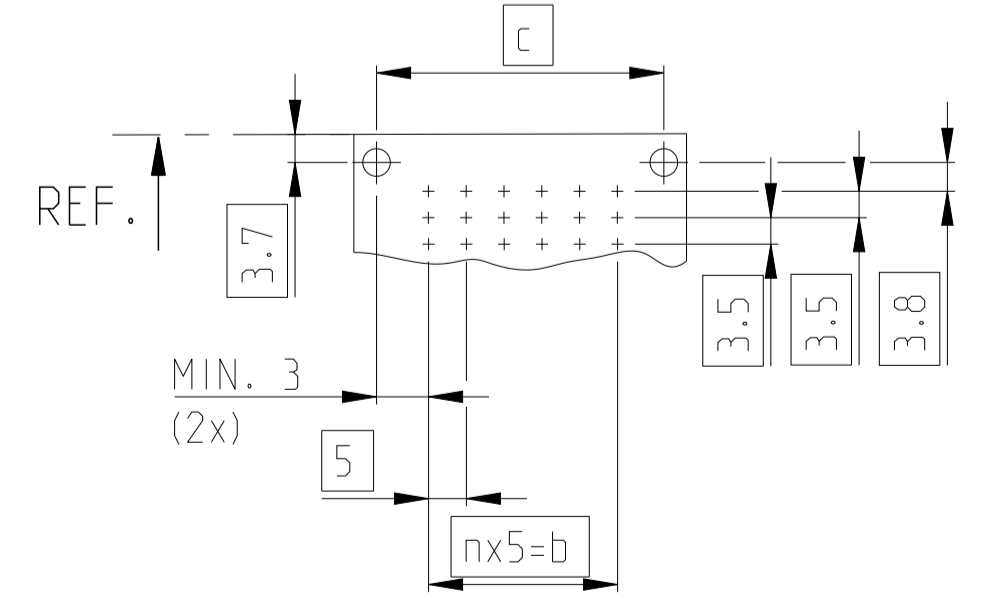
-1 WITH CODING A
 mit Kodierung

(GROOVES B-C) AS SHOWN
 (Nuten B-C) wie gezeichnet



3D-MODEL

PINHOLE IMAGE FOR PRINTED CIRCUIT BOARD
 Leiterplatten-Lochbild



THIS DRAWING IS A CONTROLLED DOCUMENT. <small>DESSE ZEICHNUNG WIRD ALS KONTROLLIERTES DOKUMENT FUEHRUNG. ANFORDERUNG AN DEN STUENDRUCKER: DIESE ZEICHNUNG DARF NICHT WEAENDERT WERDEN. DIE ANWENDENDEN SIND FUEHRUNG AN DER ANWENDENDEN ZU VERWECHSELN.</small>		OWN: 260L194 CHK: 260L194 NAME: Haess	TE Connectivity
DIMENSIONS: MASSENMAEßEN: mm TOLERANCES: UNLESS OTHERWISE SPECIFIED: ALLE DIMENSIONEN 0 PL ±0.2 1 PL ±0.2 2 PL ±0.2 3 PL ±0.2 4 PL ±0.2 5 PL ±0.2 6 PL ±0.2 7 PL ±0.2 8 PL ±0.2 9 PL ±0.2 10 PL ±0.2 11 PL ±0.2 12 PL ±0.2 13 PL ±0.2 14 PL ±0.2 15 PL ±0.2 16 PL ±0.2 17 PL ±0.2 18 PL ±0.2 19 PL ±0.2 20 PL ±0.2 21 PL ±0.2 22 PL ±0.2 23 PL ±0.2 24 PL ±0.2 25 PL ±0.2 26 PL ±0.2 27 PL ±0.2 28 PL ±0.2 29 PL ±0.2 30 PL ±0.2 31 PL ±0.2 32 PL ±0.2 33 PL ±0.2 34 PL ±0.2 35 PL ±0.2 36 PL ±0.2 37 PL ±0.2 38 PL ±0.2 39 PL ±0.2 40 PL ±0.2 41 PL ±0.2 42 PL ±0.2 43 PL ±0.2 44 PL ±0.2 45 PL ±0.2 46 PL ±0.2 47 PL ±0.2 48 PL ±0.2 49 PL ±0.2 50 PL ±0.2 51 PL ±0.2 52 PL ±0.2 53 PL ±0.2 54 PL ±0.2 55 PL ±0.2 56 PL ±0.2 57 PL ±0.2 58 PL ±0.2 59 PL ±0.2 60 PL ±0.2 61 PL ±0.2 62 PL ±0.2 63 PL ±0.2 64 PL ±0.2 65 PL ±0.2 66 PL ±0.2 67 PL ±0.2 68 PL ±0.2 69 PL ±0.2 70 PL ±0.2 71 PL ±0.2 72 PL ±0.2 73 PL ±0.2 74 PL ±0.2 75 PL ±0.2 76 PL ±0.2 77 PL ±0.2 78 PL ±0.2 79 PL ±0.2 80 PL ±0.2 81 PL ±0.2 82 PL ±0.2 83 PL ±0.2 84 PL ±0.2 85 PL ±0.2 86 PL ±0.2 87 PL ±0.2 88 PL ±0.2 89 PL ±0.2 90 PL ±0.2 91 PL ±0.2 92 PL ±0.2 93 PL ±0.2 94 PL ±0.2 95 PL ±0.2 96 PL ±0.2 97 PL ±0.2 98 PL ±0.2 99 PL ±0.2 100 PL ±0.2	PRODUCT SPEC: 108-94624 APPLICATION SPEC: VERARBEITUNGSSPEZ. MATERIAL: SEE PARTS LIST WEIGHT: - SEE PARTS LIST	PRODUCT SPEC: 108-94624 APPLICATION SPEC: VERARBEITUNGSSPEZ. MATERIAL: SEE PARTS LIST WEIGHT: - SEE PARTS LIST	
Customer Drawing		SIZE: A1 CAGE CODE: 00779 DRAWING NO.: 966140 SCALE: MASSSTAB 2:1	RESTRICTED TO: NUR FUEHRUNG SHEET: 1 OF 2 REV: F9

LOC		DIST		REVISIONS			
A	1	P	LTH	DESCRIPTION	DATE	OWN	APVD
				SEE SHEET 1 OF 2			

POSITIONS Polzahl	n	a±0.2	b	c	d _{-0.2}	e _{-0.25}	f	CODING Kodierung	CAVITY NUMBERING Kammerbezeichnung	ORDER NO. REV. Bestell-Nr.	ORDER NO. REV. Bestell-Nr.	WEIGHT Gewicht	POS.	QTY Stueck	DESCRIPTION Benennung Einzelteil	MATERIAL Werkstoff	SURFACE/Oberflaeche COLOUR/ Farbe
21	6	38.5	30	45	42.5	38.5	36.5	B (GROOVES) Nuten A-C		5-966140-6 A	4-966140-6 A	18.3g	4	7	TAB (43.4mm)	CuSn0.15/0.20	SEL. SILVER PLATED
										3	7		TAB (34.4mm)	CuSn0.15/0.20	SEL. SILVER PLATED		
18	5	33.5	25	40	37.5	33.5	31.5	A (GROOVES B-C) (Nuten B_C)		6-966140-6 C	3-966140-6 C	18.3g	2	7	TAB (25.4mm)	CuSn0.15/0.20	SEL. SILVER PLATED
										5	1		21 POS. HOUSING	PA66-GF13	NATURAL/natur		
15	4	28.5	20	35	32.5	28.5	26.5	A (GROOVES B-C) (Nuten B_C)		6-966140-1 C	3-966140-1 C	16.0g	4	7	TAB (43.4mm)	CuSn4	SEL. SILVER PLATED
										3	7		TAB (34.4mm)	CuSn4	SEL. SILVER PLATED		
12	3	23.5	15	30	27.5	23.5	21.5	A (GROOVES B-C) (Nuten B_C)		6-966140-2 C	3-966140-2 C	13.6g	2	7	TAB (25.4mm)	CuSn4	SEL. SILVER PLATED
										1	1		21 POS. HOUSING	PA66-GF13	BLACK/schwarz		
9	2	18.5	10	25	22.5	18.5	16.5	A (GROOVES B-C) (Nuten B_C)		6-966140-3 C	3-966140-3 C	11.2g	4	6	TAB (43.4mm)	CuSn4	SEL. SILVER PLATED
										3	6		TAB (34.4mm)	CuSn4	SEL. SILVER PLATED		
6	1	13.5	5	20	17.5	13.5	11.5	A (GROOVES B-C) (Nuten B_C)		6-966140-4 C	3-966140-4 C	8.9g	2	4	TAB (25.4mm)	CuSn4	SEL. SILVER PLATED
										5	1		12 POS. HOUSING	PA66-GF13	NATURAL/natur		
								A (GROOVES B-C) (Nuten B_C)		6-966140-5 C	3-966140-5 C	6.6g	4	4	TAB (43.4mm)	CuSn4	SEL. SILVER PLATED
										3	2		TAB (34.4mm)	CuSn4	SEL. SILVER PLATED		
													1	1	6 POS. HOUSING	PA66-GF13	BLACK/schwarz

POSITIONS Polzahl	n	a±0.2	b	c	d _{-0.2}	e _{-0.25}	f	CODING Kodierung	CAVITY NUMBERING Kammerbezeichnung	ORDER NO. REV. Bestell-Nr.	ORDER NO. REV. Bestell-Nr.	WEIGHT Gewicht	POS.	QTY Stueck	DESCRIPTION Benennung Einzelteil	MATERIAL Werkstoff	SURFACE/Oberflaeche COLOUR/ Farbe
21	6	38.5	30	45	42.5	38.5	36.5	B (GROOVES) Nuten A-C		8-966140-6 A	1-966140-6 A	18.3g	4	7	TAB (43.4mm)	CuSn4	TINNED/verzinkt
										3	7		TAB (34.4mm)	CuSn4	TINNED/verzinkt		
18	5	33.5	25	40	37.5	33.5	31.5	A (GROOVES B-C) (Nuten B_C)		9-966140-6 F	966140-6 F	18.3g	2	7	TAB (25.4mm)	CuSn4	TINNED/verzinkt
										1	1		21 POS. HOUSING	PA66-GF13	BLACK/schwarz		
15	4	28.5	20	35	32.5	28.5	26.5	A (GROOVES B-C) (Nuten B_C)		9-966140-1 F	966140-1 F	16.0g	4	6	TAB (43.4mm)	CuSn4	TINNED/verzinkt
										3	6		TAB (34.4mm)	CuSn4	TINNED/verzinkt		
12	3	23.5	15	30	27.5	23.5	21.5	B (GROOVES) Nuten A-C		9-966140-2 F	966140-2 F	13.6g	2	6	TAB (25.4mm)	CuSn4	TINNED/verzinkt
										1	1		15 POS. HOUSING	PA66-GF13	BLACK/schwarz		
9	2	18.5	10	25	22.5	18.5	16.5	A (GROOVES B-C) (Nuten B_C)		8-966140-3 A	1-966140-3 A	11.2g	4	4	TAB (43.4mm)	CuSn4	TINNED/verzinkt
										3	4		TAB (34.4mm)	CuSn4	TINNED/verzinkt		
6	1	13.5	5	20	17.5	13.5	11.5	A (GROOVES B-C) (Nuten B_C)		9-966140-3 F	966140-3 F	11.2g	2	4	TAB (25.4mm)	CuSn4	TINNED/verzinkt
										3	4		TAB (34.4mm)	CuSn4	TINNED/verzinkt		
								A (GROOVES B-C) (Nuten B_C)		9-966140-4 F	966140-4 F	8.9g	1	1	12 POS. HOUSING	PA66-GF13	BLACK/schwarz
										4	3		TAB (43.4mm)	CuSn4	TINNED/verzinkt		
								A (GROOVES B-C) (Nuten B_C)		9-966140-5 F	966140-5 F	6.6g	3	3	TAB (34.4mm)	CuSn4	TINNED/verzinkt
										2	3		TAB (25.4mm)	CuSn4	TINNED/verzinkt		
													1	1	9 POS. HOUSING	PA66-GF13	BLACK/schwarz
													4	2	TAB (43.4mm)	CuSn4	TINNED/verzinkt
													3	2	TAB (34.4mm)	CuSn4	TINNED/verzinkt
													2	2	TAB (25.4mm)	CuSn4	TINNED/verzinkt
													1	1	6 POS. HOUSING	PA66-GF13	BLACK/schwarz

THIS DRAWING IS A CONTROLLED DOCUMENT. DIMENSIONS: mm. TOLERANCES UNLESS OTHERWISE SPECIFIED: 0 PLC ±, 1 PLC ±, 2 PLC ±, 3 PLC ±, 4 PLC ±, ANGLES ±0°.

OWN: Mahlike, B. 160CT2014
 CHK: Krauss, S. 170CT2014
 APVD: Goepfel, C. 200CT2014

NAME: TAB HEADER, 2.8x0.8, 6-21 POS. Messerleiste, 2.8x0.8, 6-21 pol.

SIZE: A1 CAGE CODE: 00779 DRAWING NO: C=966140

RESTRICTED TO: Customer Drawing SCALE: 2:1 SHEET: 2 OF 2 REV: F9