

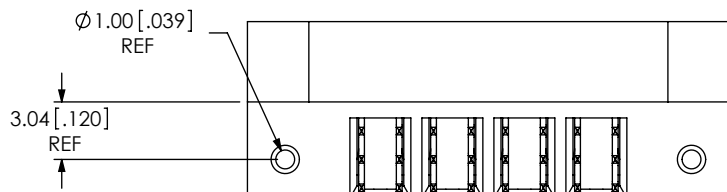
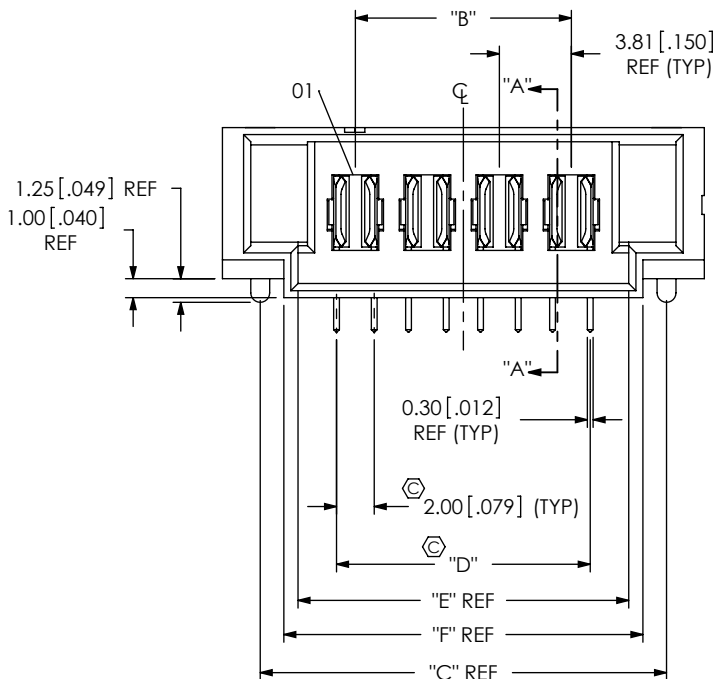
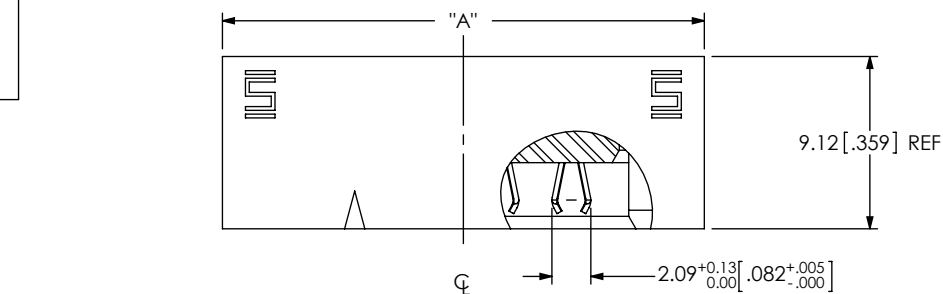
FIG 1  
(UPT-04-01-X-RA-X SHOWN)DO NOT  
SCALE FROM  
THIS PRINT

TABLE 2

TAIL LENGTH	"G"	SUB-T-1M70-XX-X
-01	2.82 [0.111]	SUB-T-1M70-01-X
-02	3.58 [0.141]	SUB-T-1M70-02-X

UPT-XX-01-XX-X-RA-XX-XX

NO. OF POSITIONS

- 02: 2 POSITIONS
- 04: 4 POSITIONS
- 06: 6 POSITIONS
- 08: 8 POSITIONS

PACKAGING OPTION

-TR: TAPE AND REEL

LEAD STYLE

-01

OPTION

-LC: LOCKING CLIP

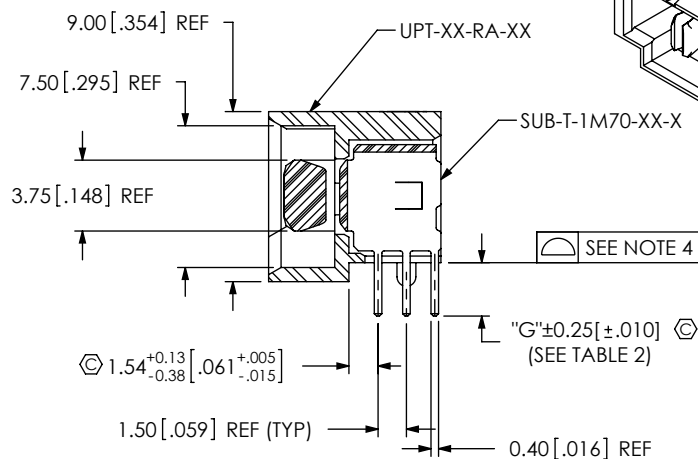
RIGHT ANGLE

TAIL LENGTH

- 01: FOR 1.57 [.062] THICK PCB  
(USE SUB-T-1M70-01-X)
- 02: FOR 2.36 [.093] THICK PCB  
(USE SUB-T-1M70-02-X)

PLATING

- L: LIGHT SELECTIVE, 10 AU/50 NI  
MIN ON CONTACT, TIN ON TAIL
- T: TIN, TIN ALL OVER



SECTION "A"- "A"

TABLE 1

PART NUMBER	"A"	"B"	"C"	"D"	"E"	"F"
UPT-02-XX-X-RA-XX	17.88 [ .704]	3.81 [ .150]	13.88 [ .546]	5.81 [ .228]	9.88 [ .389]	11.38 [ .448]
UPT-04-XX-X-RA-XX	25.50 [ 1.004]	11.43 [ .450]	21.50 [ .846]	13.43 [ .529]	17.50 [ .689]	19.00 [ .748]
UPT-06-XX-X-RA-XX	33.12 [ 1.304]	19.05 [ .750]	29.12 [ 1.146]	21.05 [ .829]	25.12 [ .989]	26.62 [ 1.048]
UPT-08-XX-X-RA-XX	40.74 [ 1.604]	26.67 [ 1.050]	36.74 [ 1.446]	28.67 [ 1.029]	32.74 [ 1.289]	34.24 [ 1.348]

UNLESS OTHERWISE SPECIFIED,  
DIMENSIONS ARE IN MILLIMETERS  
TOLERANCES ARE:

DECIMALS

ANGLES

X.X: ±0.3 [.01]

2°

X.XX: ±0.13 [.005]

X.XXX: ±0.051 [.0020]

## PROPRIETARY NOTE

THIS DOCUMENT CONTAINS INFORMATION  
CONFIDENTIAL AND PROPRIETARY TO  
SAMTEC, INC. AND SHALL NOT BE REPRODUCED  
OR TRANSFERRED TO OTHER DOCUMENTS OR  
DISCLOSED TO OTHERS OR USED FOR ANY  
PURPOSE OTHER THAN THAT WHICH IT WAS  
OBTAINED WITHOUT THE EXPRESSED WRITTEN  
CONSENT OF SAMTEC, INC.

## MATERIAL:

DO NOT SCALE DRAWING  
INSULATOR: LCP, COLOR: BLACK UL 94 VO  
TERMINAL: BeCu  
LOCKING CLIP: PHOS BRONZE

SHEET SCALE: 1:0.4

520 PARK EAST BLVD, NEW ALBANY, IN 47150  
PHONE: 812-944-6733 FAX: 812-948-5047  
e-Mail: info@SAMTEC.com code: 55322

DESCRIPTION:

UPT-RA, ASSEMBLY

DWG. NO.

UPT-XX-01-XX-X-RA-XX-XX

BY: B RAY

10/01/2008

SHEET 1 OF 2

## NOTES:

1. Ⓢ REPRESENTS A CRITICAL DIMENSION.
2. BURR ALLOWANCE: 0.038 [.0015] MAX.
3. MINIMUM PUSHOUT FORCE: 4.5N [1.0 LB].
4. MAXIMUM ALLOWABLE BOW: .15 [.006].
5. MINIMUM -LC PULL OUT FORCE: 2.23 N [0.5LB]

FIG 2  
(UPT-04-01-X-RA-X-LC SHOWN)  
(SAME AS FIG 1, DIFFERENT AS SHOWN)

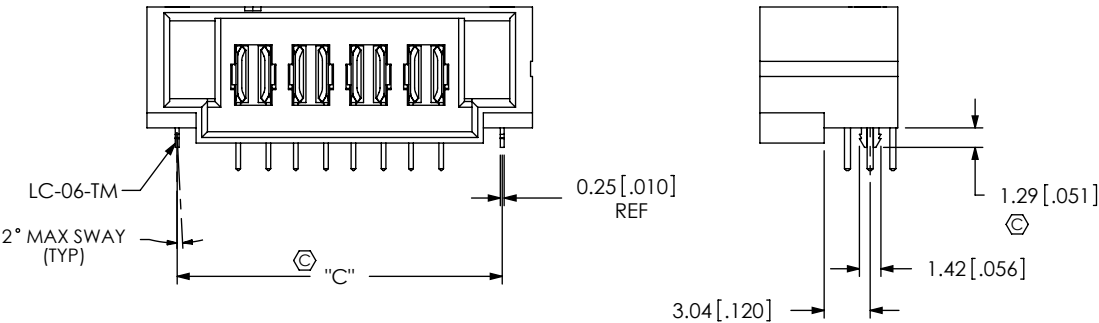


TABLE 3

PLATING	POWER PIN CONTACT AREA	POWER PIN TAIL
-L	LIGHT GOLD	MATTE TIN
-T	MATTE TIN	MATTE TIN

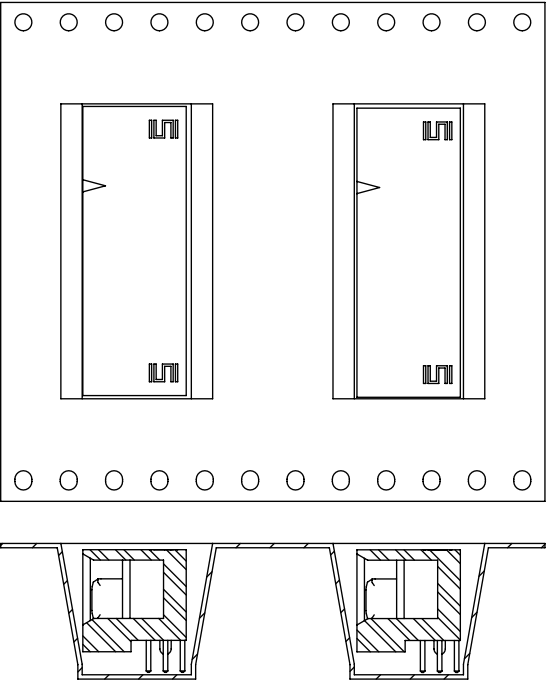
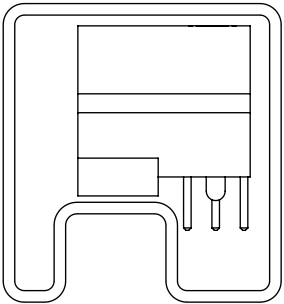


FIG 3  
-TR: PACKAGING VIEW  
TAPE AND REEL



PACKAGING TUBE VIEW

TUBE TABLE

TAIL LENGTH	TUBE	PLUG
ALL	PT-1-24-01-40	TP-13

PROPRIETARY NOTE

THIS DOCUMENT CONTAINS INFORMATION  
CONFIDENTIAL AND PROPRIETARY TO  
SAMTEC, INC. AND SHALL NOT BE REPRODUCED  
OR TRANSFERRED TO OTHER DOCUMENTS OR  
DISCLOSED TO OTHERS OR USED FOR ANY  
PURPOSE OTHER THAN THAT WHICH IT WAS  
OBTAINED WITHOUT THE EXPRESSED WRITTEN  
CONSENT OF SAMTEC, INC.

DO NOT SCALE DRAWING

SHEET SCALE: 1:0.333333



520 PARK EAST BLVD, NEW ALBANY, IN 47150  
PHONE: 812-944-6733 FAX: 812-948-5047  
e-Mail: info@SAMTEC.com code: 55322

DESCRIPTION: UPT-RA, ASSEMBLY

DWG. NO. UPT-XX-01-XX-X-RA-XX-XX

BY: B RAY 10/01/2008 SHEET 2 OF 2